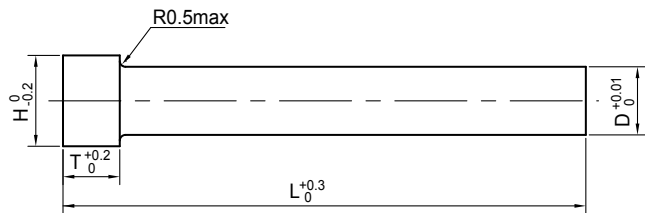


# Standard Punch - BP Type (SKH51)

# 標準沖頭BP型



材質 Material: SKH51  
 硬度 Hardness: HRC62°~64°



Price: (RMB)

D	H	T	L							
			50	60	70	80	90	100	130	
2.0~3.0	5	5	13	16	19	22				
3.1~4.0	6		13	16	19	22				
4.1~5.0	7		14	18	22	27	33	38	48	
5.1~6.0	8		15	19	23	31	36	43	52	
6.1~7.0	9		16	20	24	32	41	46	57	
7.1~8.0	11		30	35	38	45	55	64	81	
8.1~9.0	12		32	39	41	50	65	74	89	
9.1~10.0	13		34	41	44	55	74	84	99	
10.1~11.0	14		43	49	55	65	88	107	124	
11.1~12.0	15		52	58	66	75	102	130	148	
12.1~13.0	16		58	63	74	83	118	146	166	
13.1~14.0	17		68	76	90	100	128	155	183	
14.1~15.0	18		76	84	97	109	146	182	205	
15.1~16.0	19		90	97	114	126	164	191	216	
16.1~17.0	20		104	119	139	154	182	205	234	
17.1~18.0	21		119	142	165	182	200	219	257	
18.1~19.0	22		139	168	191	219	246	273	307	
19.1~20.0	23		153	185	210	240	270	300	337	
20.1~21.0	24		168	202	234	268	300	332	372	
21.1~22.0	25		183	219	258	296	330	364	410	
22.1~23.0	26	198	236	282	324	360	396	444		
23.1~24.0	27	213	255	308	355	390	428	479		
24.1~25.0	28	230	270	330	380	420	460	514		

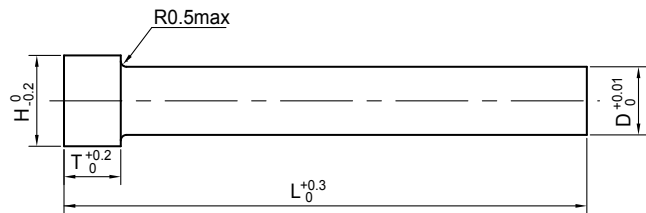
# Standard Punch - BP Type (SKD11)

# 標準沖頭BP型



材質 Material: SKD11

硬度 Hardness: HRC60°~62°



Price: (RMB)

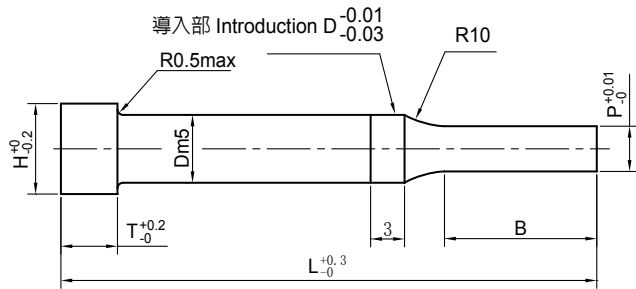
D	H	T	L							
			50	60	70	80	90	100	130	
2.0~3.0	5	5	7	8	10	14				
3.1~4.0	6		8	9	11	15				
4.1~5.0	7		8	9	12	16	21	32	38	
5.1~6.0	8		9	10	13	18	22	33	42	
6.1~7.0	9		10	11	14	19	23	34	46	
7.1~8.0	11		11	12	15	21	25	36	48	
8.1~9.0	12		12	14	16	22	28	40	52	
9.1~10.0	13		13	15	17	23	29	41	54	
10.1~11.0	14		14	17	19	26	34	46	58	
11.1~12.0	15		15	18	21	28	38	50	62	
12.1~13.0	16		20	23	28	31	42	52	66	
13.1~14.0	17		24	28	31	35	45	56	73	
14.1~15.0	18		26	31	34	40	50	61	79	
15.1~16.0	19		28	32	38	45	56	67	88	
16.1~17.0	20		31	35	41	48	59	70	92	
17.1~18.0	21		34	37	44	50	61	72	97	
18.1~19.0	22		37	45	51	58	66	84	110	
19.1~20.0	23		43	53	59	67	76	96	124	
20.1~21.0	24		45	55	61	69	78	98	129	
21.1~22.0	25		47	57	63	71	80	100	133	
22.1~23.0	26	50	60	66	74	83	106	142		
23.1~24.0	27	52	61	67	75	88	112	150		
24.1~25.0	28	53	62	70	77	95	119	158		

# Standard Punch - AP Type (SKH51)

# 標準沖頭AP型



材質 Material: SKH51  
 硬度 Hardness: HRC62°~64°



Price: (RMB)

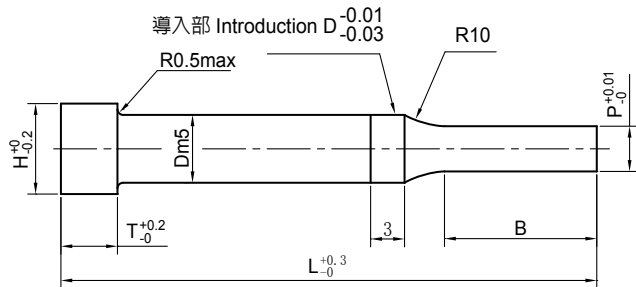
D	H	P	T	B		L					
				S	L	50	60	70	80	90	100
3	5	1.00~2.99	5	8	13	15	17	20	23		
4	6	1.00~3.99				16	18	22	25		
5	7	2.00~4.99				17	19	24	30	38	45
6	8	2.00~5.99				18	20	26	34	42	52
8	11	3.00~7.99				28	33	39	47	59	70
10	13	3.00~9.99		13	19	38	46	52	60	76	88
13	16	6.00~12.99				74	80	89	98	130	155
16	19	10.00~15.99				105	115	130	145	190	220
20	23	13.00~19.99		19	25	145	165	190	220	240	260
25	28	18.00~24.99				540	280	340	400	450	500

# Standard Punch - AP Type (SKD11)

# 標準沖頭AP型



材質 Material: SKD11  
 硬度 Hardness: HRC60°~62°



Price: (RMB)

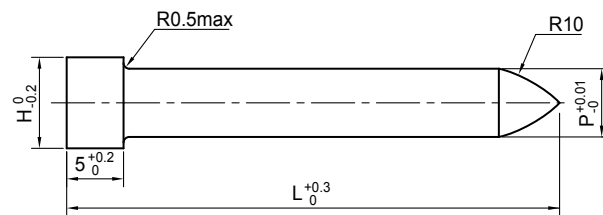
D	H	P	T	B		L					
				S	L	50	60	70	80	90	100
3	5	1.00~2.99	5	8	13	8	10	13	17		
4	6	1.00~3.99				9	10	14	18		
5	7	2.00~4.99				10	11	14	20	23	34
6	8	2.00~5.99				11	12	14	21	25	36
8	11	3.00~7.99		13	19	13	15	18	24	30	42
10	13	3.00~9.99				17	19	22	27	36	48
13	16	6.00~12.99				24	27	31	36	48	60
16	19	10.00~15.99		19	25	35	39	47	56	70	85
20	23	13.00~19.99				47	53	61	73	80	93
25	28	18.00~24.99				67	73	87	100	107	130

# 引導沖頭BPP型



材質 Material: SKD11

硬度 Hardness: HRC60°~62°



Price: (RMB)

D	H	D	T	L					
		每0.01進位		42	52	62	72	82	92
3	5	2.00~3.00	5	9	11	12	15		
4	6	3.00~4.00		11	12	14	17		
5	7	4.00~5.00		11	12	14	18	22	26
6	8	5.0~6.00		12	14	15	20	24	28
8	11	6.00~8.00		15	17	18	22	26	32
10	13	8.00~10.00		18	20	23	26	30	34
13	16	10.00~13.00		25	25	28	32	38	49
16	19	13.00~16.00		30	37	42	49	59	73

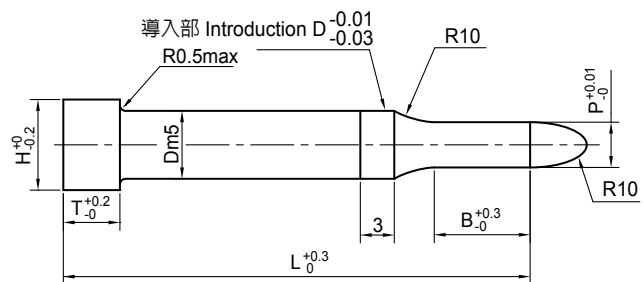
Pilot Punch - APP Type

# 引導沖頭APP型



材質 Material: SKD11

硬度 Hardness: HRC60°~62°



Price: (RMB)

D	H	D	T	B	L							
					42	52	62	72	82	92	102	
3	5	1.00~2.99	5	10	12	12	15	20	26			
4	6	1.00~3.99			14	14	15	21	27			
5	7	2.00~4.99			15	15	17	21	30	34	43	
6	8	2.50~5.99			17	17	18	21	32	38	46	
8	11	3.00~7.99		15	20	20	21	23	34	39	48	
10	13	3.00~9.99			22	22	25	29	35	47	62	
13	16	6.00~12.99			31	31	35	40	47	62	78	
16	19	10.00~15.99			21	39	48	55	63	76	95	111

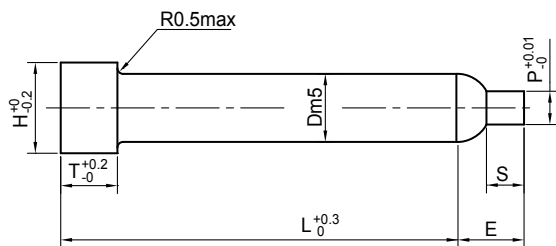
# Burring Punch - NP Type

# 抽牙沖頭NP型



材質 Material: SKD11

硬度 Hardness: HRC60°~62°



Price: (RMB)

D	H	P	T	E	S	L			
						41	51	61	71
4	6	2.00~3.20	5	2.7	2	13	15	16	18
5	7	2.00~3.80		3.7	3	14	16	17	19
6	8	2.00~4.30		4.1	3	15	17	19	21
8	11	5.00~5.44		5.6	4	19	21	23	25

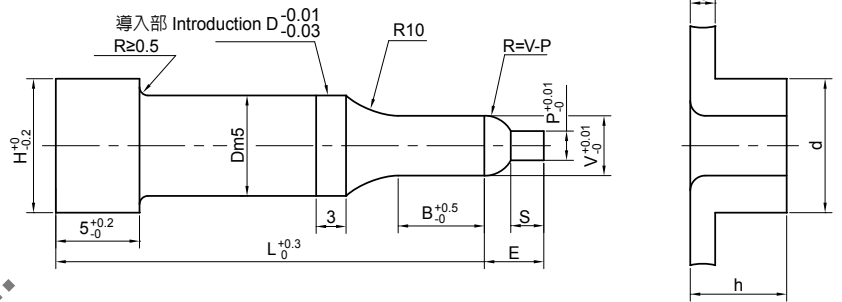
# Burring Punch - MP Type

# 抽牙沖頭MP型



材質 Material: SKD11

硬度 Hardness: HRC60°~62°



Price: (RMB)

D	H	B	指定0.01mm單位		L			
			min V max	min P	41	51	61	71
4	6	8 13 19	2.00~3.99	1.00	15	17	18	20
5	7		2.00~4.99	1.20	16	18	19	21
6	8		2.00~5.99	1.20	17	19	21	23
8	11		5.00~7.99	1.50	21	23	25	27

M	V	P	B	S	E	MXP	h • d (spcc)							
							代號	t	0.6	0.8	1.0	1.2	1.6	2.0
2.6	2.22	1.5	6	2	2.7	M2.6 × 0.45	A	d	3.12	3.34	3.72			
	h							1.3	1.47	1.77				
	2.25						B	d	3.15	3.37	3.75			
	2.32							h	1.3	1.5	1.8			
2.35	C	d	3.22	3.44	3.82									
		h	1.35	1.6	1.82									
3	2.59	1.9	8	3	3.6	M3 × 0.5	A	d	3.49	3.79	3.99	4.39		
	2.63							h	1.3	1.55	1.75	2.05		
	2.72						B	d	3.53	3.83	4.03	4.43		
	2.76							h	1.35	1.6	1.75	2.07		
4	3.39	2.4	8	3	3.9	M4 × 0.7	A	d	4.29	4.59	4.79	5.07	5.79	
	3.44							h	1.5	1.77	2.0	2.17	2.6	
	3.64						B	d	4.34	4.64	4.84	5.12	5.84	
	3.69							h	1.5	1.77	2.0	2.2	2.65	
5	4.33	2.8	8	4	5.4	M5 × 0.8	C	d	4.45	4.48	5.04	5.32	6.04	
	4.38							h	1.6	1.85	2.07	2.27	2.7	
	4.62						D	d	4.59	4.89	5.09	5.37	6.09	
	4.67							h	1.63	1.9	2.1	2.3	2.73	
	A	d			5.83	6.01	6.57	7.33						
		h			2.27	2.47	2.85	3.5						
	B	d			5.88	6.06	6.62	7.38						
		h			2.3	2.25	2.9	3.52						
	C	d			6.12	6.30	6.86	7.62						
		h			2.42	2.65	3.0	3.62						
	D	d			6.17	6.35	6.91	7.67						
		h			2.45	2.7	3.05	3.65						

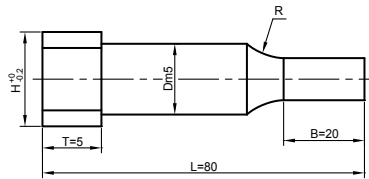


# Variable Punch Forming (SKH51)

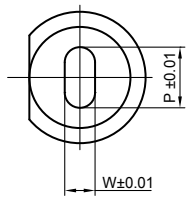
## 異型沖頭SA型

材質 Material: SKH51

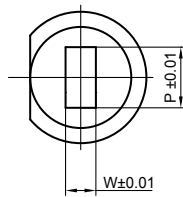
硬度 Hardness: HRC62°~64°



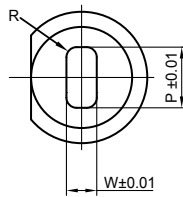
**SAE**



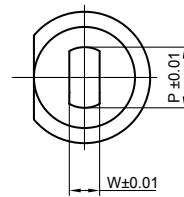
**SAD**



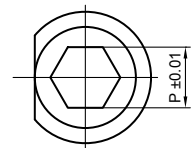
**SAR**



**SAG**



**SAS**



Price: (RMB)

D	H	L	T	B	橢圓形 SAE	方形 SAD	方形R加工 SAR	削雙邊 SAG	六角形 SAS
5	7	80	5	20	90	80	165	70	90
6	8				90	80	165	70	90
8	11				90	80	165	70	90
10	13				110	90	190	90	110
13	16				125	110	205	100	125
16	19				170	155	255	145	170
20	23				195	175	275	165	195
25	28				235	210	310	200	235
32	35				380	340	445	330	380

# Variable Punch Forming (SKH51)

## 異型沖頭SA型

材質 Material: SKH51

硬度 Hardness: HRC62°~64°



**SAE**



**SAD**



**SAR**



**SAG**



**SAS**

Price: (RMB)

D	H	L	T	B	橢圓形 SAE	方形 SAD	方形R加工 SAR	削雙邊 SAG	六角形 SAS
5	7	80	5	20	70	63	125	55	70
6	8				70	63	125	55	70
8	11				70	63	125	55	70
10	13				78	70	135	63	78
13	16				87	78	144	70	87
16	19				113	102	168	94	113
20	23				130	117	183	109	130
25	28				156	140	207	132	156
32	35				251	226	295	218	251

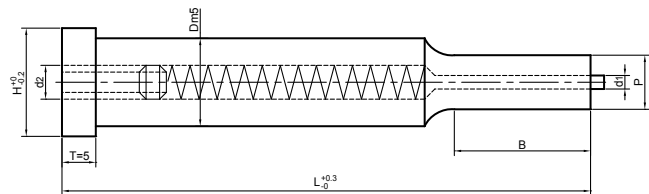
# Ejector Punch - JP Type (SKH51)

## 標準子母沖頭JP型



材質 Material: SKH51

硬度 Hardness: HRC62°~64°



Price: (RMB)

D	H	P	B	d1	d2	L					
						50	60	70	80	90	100
5	7	2.00~4.99	8	0.7	2.5	93	101	111	145	176	234
6	8	2.00~5.99				93	101	111	145	176	234
8	11	3.00~7.99	13	1	3.3	102	111	126	145	176	234
10	13	3.00~9.99				104	117	134	157	205	260
13	16	6.00~12.99		130	140	160	217	288	353		
16	19	10.00~15.99	19	2	5.2	170	186	213	257	330	390
20	23	13.00~19.99				238	271	312	366	400	446
25	28	18.00~24.99		2.5		340	389	471	550	610	695

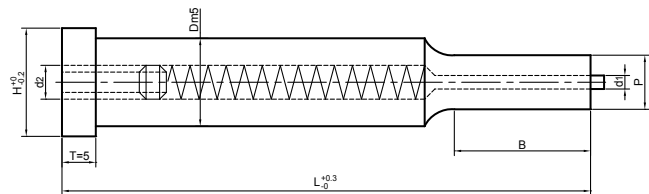
# Ejector Punch - JP Type (SKD11)

## 標準子母沖頭JP型



材質 Material: SKD11

硬度 Hardness: HRC60°~62°



Price: (RMB)

D	H	P	B	d1	d2	L					
						50	60	70	80	90	100
5	7	2.00~4.99	8	0.7	2.5	65	70	75	100	120	168
6	8	2.00~5.99				65	70	75	100	120	168
8	11	3.00~7.99	13	1	3.3	70	75	85	100	120	168
10	13	3.00~9.99				72	78	90	108	144	192
13	16	6.00~12.99		1.5	4.2	75	82	95	144	192	240
16	19	10.00~15.99	19	2	5.2	100	110	130	168	210	255
20	23	13.00~19.99				140	159	183	219	240	279
25	28	18.00~24.99		2.5	167	182	218	250	267	325	