



鈦賜精密有限公司

TAIS T-P CO., LTD.



精密夾具、磨床及 銑床配件目錄

Accessories for precision fixtures,
grinding machines and milling machines





鈦賜精密

TAIS T-P CO., LTD.



Products Briefs 產品簡介 ▶▶



PNH精密夾具、磨床及銑床配件，為台灣所生產之精密產品。長期以來，**PNH**產品依照日本嚴格的生產標準OEM代工給歐美、日本客戶，並獲得良好的口碑。每台**PNH**產品於出廠前，皆通過100%的品質檢驗，並隨機附上品檢表，品質經得起考驗。我們深信優良的品質與合理的價格，必將符合您的需求。



PNH precision fixtures, grinding machine accessories and milling machine accessories are the finest products manufactured in Taiwan. All of our **PNH** products have been manufactured by following the highly strict Japanese manufacturing standard. OEM is always provided to our customers. **PNH** products have received many positive reviews from the customers in Europe, the U.S., and Japan. Every PNH product is required to pass strict QC; QC report is provided with the product. We are confident that you will be satisfied with our high quality PNH products with affordable prices.





TAIS T-P CO., LTD.

索引-----	INDEX-----	01
導位輔助器-TBSF-----	TAPER BLOCK SET-TBSF-----	02
導位輔助器-TBS-----	TAPER BLOCK SET-TBS-----	03
小型導位輔助器-KYZ-----	TAPER BLOCK SET-KYZ-----	04
方型輔助器-LK-----	TAPER BLOCK SET-LK-----	05
導位定位塊-LBJX-----	TAPER BLOCK SET-LBJX-----	06
導位定位塊-KYTJ-----	TAPER BLOCK SET-KYTJ-----	07
導位輔助器-TSSB-----	TAPER BLOCK SET-TSSB-----	08
導位輔助器-KYT-----	TAPER BLOCK SET-KYT-----	09
大型導柱輔助器-KYA/KYB-----	TAPER BLOCK SET-KYA/KYB-----	10
M型精密V型台-----	PRECISION V-BLOCKS-----	11
精密V型台-----	PRECISION V-BLOCKS-----	11
V型三角台-----	PRECISION V-BLOCKS WITH CLAMP-----	12
圓形輔助器-TPN-----	TABLE PIN SET-TPN-----	12
小型沖子研磨機PNH-PGS-----	PNH-PGS PUNCH GRINDER-----	13
沖子研磨機PNH-PG-----	PNH-PG PUNCH GRINDER-----	14
萬向精密萬力-----	PRECISION UNIVERSAL VISE-----	15
精密三次元工具萬力-----	PRECISION UNIVERSAL 3-WAY ANGLE VISE-----	16
筒夾單向沖子成型器PNH-PCA-----	COLLECT SINGLE-WAY PUNCH FORMER-----	17
筒夾雙向沖子成型器PNH-PCB-----	COLLECT TWO-WAY PUNCH FORMER-----	18
大型單向沖子成型器PNH-PSL-----	LARGE-SIZED, SINGLE-WAY PUNCH FORMER-----	19
大型雙向沖子成型器PNH-PBL-----	LARGE-SIZED, TWO-WAY PUNCH FORMER-----	20
單向沖子成型器PNH-PS-----	SINGLE-WAY PUNCH FORMER-----	21
雙向沖子成型器PNH-PB-----	TWO-WAY PUNCH FORMER-----	22
砂輪角度修整器PNH-JA-----	MATCO SINE DRESSER-----	23
角度墊規 PNH-AP-----	PNH-AP ANGLE PLATE-----	24
放電工具萬力-----	ELECTRODE VISE-----	25
線切割萬力-----	PRECISION VISE OF STAINLESS STEEL EDM-----	26
轉牙型不銹鋼精密萬力-----	TOOL MAKERS VISE OF STAINLESS STEEL-----	27
超精密工具萬力-----	SUPER PRECISION TOOL MAKERS VISE-----	27
吊拉型工具萬力-----	TOOL MAKERS VISE-----	28
吊拉型拋光工具萬力-----	POLISHING TOOL MAKERS VISE-----	29
轉牙型拋光工具萬力-----	POLISHING TOOL MAKERS VISE-----	29
轉牙型工具萬力-----	TOOL MAKERS VISE-----	30
轉牙型精密萬力-----	PRECISION MAKERS VISE-----	30
正弦萬力-----	SINE VISE-----	31
不鏽鋼精密側片萬力-----	PRECISION VISE OF STAINLESS STEEL-----	32
吊拉型精密萬力-----	PRECISION MAKERS VISE-----	33
光面角固式萬力-----	SIDE WELL-ANGLE LOCK MACHINE VISE-----	34
精密鳩尾座滑台-----	PRECISION JIU THE TAILSTOCK SLIPPERY STAGE-----	35
磁性正弦規-----	MAGNET SINE BAR-----	36



TAIS T-P CO., LTD.



導位輔助器-TBSF TAPER BLOCK SET-TBSF

Material: SKD11

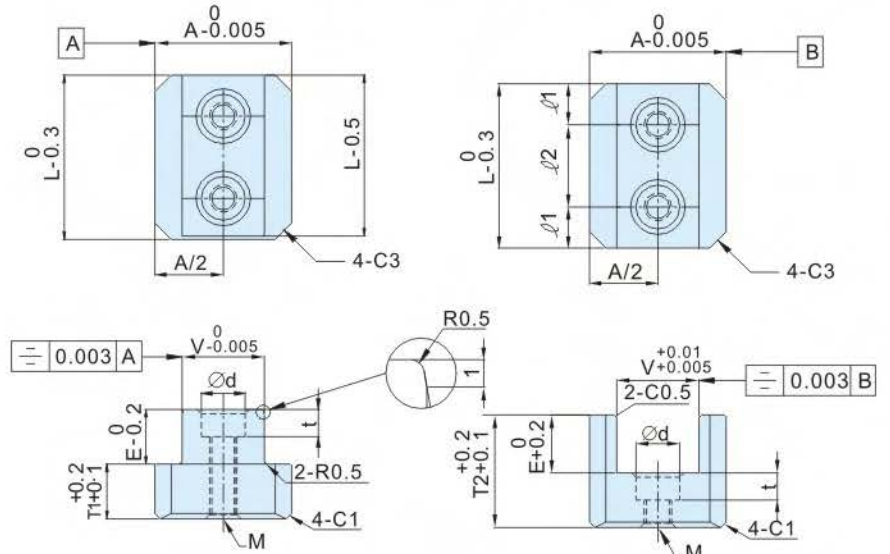
Hardness: HRC58°~62°

Parallelism: $\pm 0.005\text{mm}$

Squareness: $\pm 0.005\text{mm}$

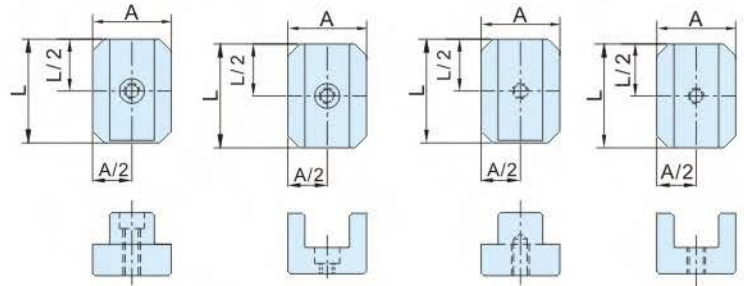
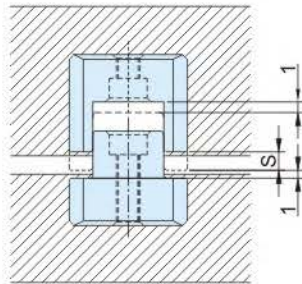


TBSF20-30 30-30 35-40
25-30 30-40 35-50



TBSF20-25
25-25

TBSF16-16
16-20



MODEL NO	S
Code	A 有效保持長(mm)
TBSF	16 5.5
	20 5.5
	25 7.5
	30 9.5
	35 12.5

unit:mm

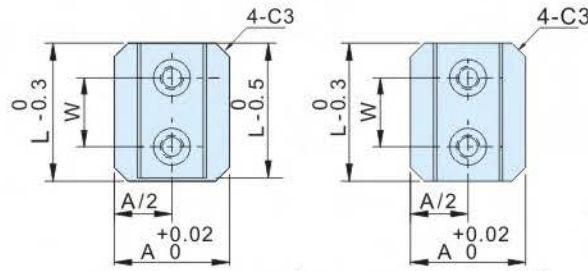
MODEL NO	A	L	E	T1	T2	V	d1	d2	t	d	M		N.W
											SHCS	TAPSIZE	
TBSF16-16	16	16	8	8	17	9	8	-	-	-	M4	M4	0.042kg
TBSF16-20		20											0.054kg
TBSF20-25	20	25	8	8	17	12	12.5	-	3.5	6.5	M3	M4	0.086kg
TBSF20-30		30											0.104kg
TBSF25-25	25	25	10	10	21	15	12.5	-	5	8	M4	M5	0.136kg
TBSF25-30		30											0.163kg
TBSF30-30	30	30	12	12	23	17	7.5	15	6	9.5	M5	M6	0.214kg
TBSF30-40		40											0.3kg
TBSF35-40	35	40	15	12	28	20	10	20	7	11	M6	M8	0.39kg
TBSF35-50		50											0.49kg

Material: SKD11

Hardness: HRC58° ~ 62°

Parallelism: ± 0.005mm

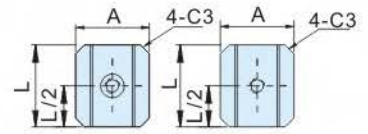
Squareness: ± 0.005mm



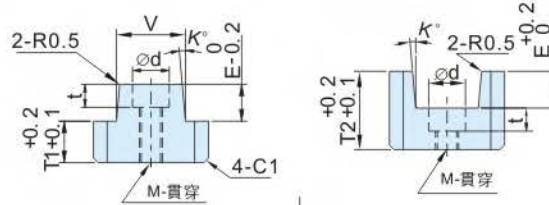
*A12~A45-50L=L⁰_{-0.3} . A45-L75~ A65=L^{0.2}_{-0.5}

1個安裝螺絲孔
TBS20-25
TBS25-25

1個安裝螺絲孔
TBS12-15
TBS12-20
TBS16-20
TBS16-25



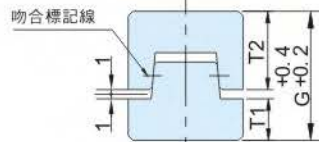
*A12(4-C2)



沒有螺釘沉頭孔，
安裝時請注意。



MODEL NO	M × l
TBS12-15	M3 × 6
TBS12-20	M3 × 6
TBS16-20	M4 × 6
TBS16-25	M4 × 6



unit:mm

型號 MODEL NO	A	L	W	K°	T1	T2	E	V	t	Ød	G	M		N.W	
												SHCS	TAP SIZE		
TBS12-15	12	15	-	1°	7	14	5	7	-	-	23	M3	M3	0.03kg	
TBS12-20		20												0.04kg	
TBS16-20	16	20	-		7	14	7	9	-	-	23	M4	M4	0.05kg	
TBS16-25		25												0.06kg	
TBS20-25	20	25	15		7	14	7	12	3.5	6.5	23	M3	M4	0.08kg	
TBS20-30		30												0.09kg	
TBS20-40		40												0.12kg	
TBS25-25	25	25	20		3°	9	17	8	15	5	8	28	M4	M5	0.12kg
TBS25-30		30													0.14kg
TBS25-40		40													0.19kg
TBS30-30	30	30	15		5°	10	20	8	17	6	9	32	M5	M6	0.19kg
TBS30-40		40													0.26kg
TBS35-40	35	40	20	5°	11	22	10	20	7	11	35	M6	M8	0.32kg	
TBS35-50		50												0.41kg	
TBS45-50	45	50	30	3°	14	29	15	25	7	11	45	M6	M8	0.69kg	
TBS45-75		75												1.06kg	
TBS45-100		100												1.44kg	
TBS65-60	65	60	30	5°	19	39	20	35	7	11	45	M8	M10	1.65kg	
TBS65-90		90												2.56kg	
TBS65-120		120												3.44kg	



TAIS T-P CO., LTD.



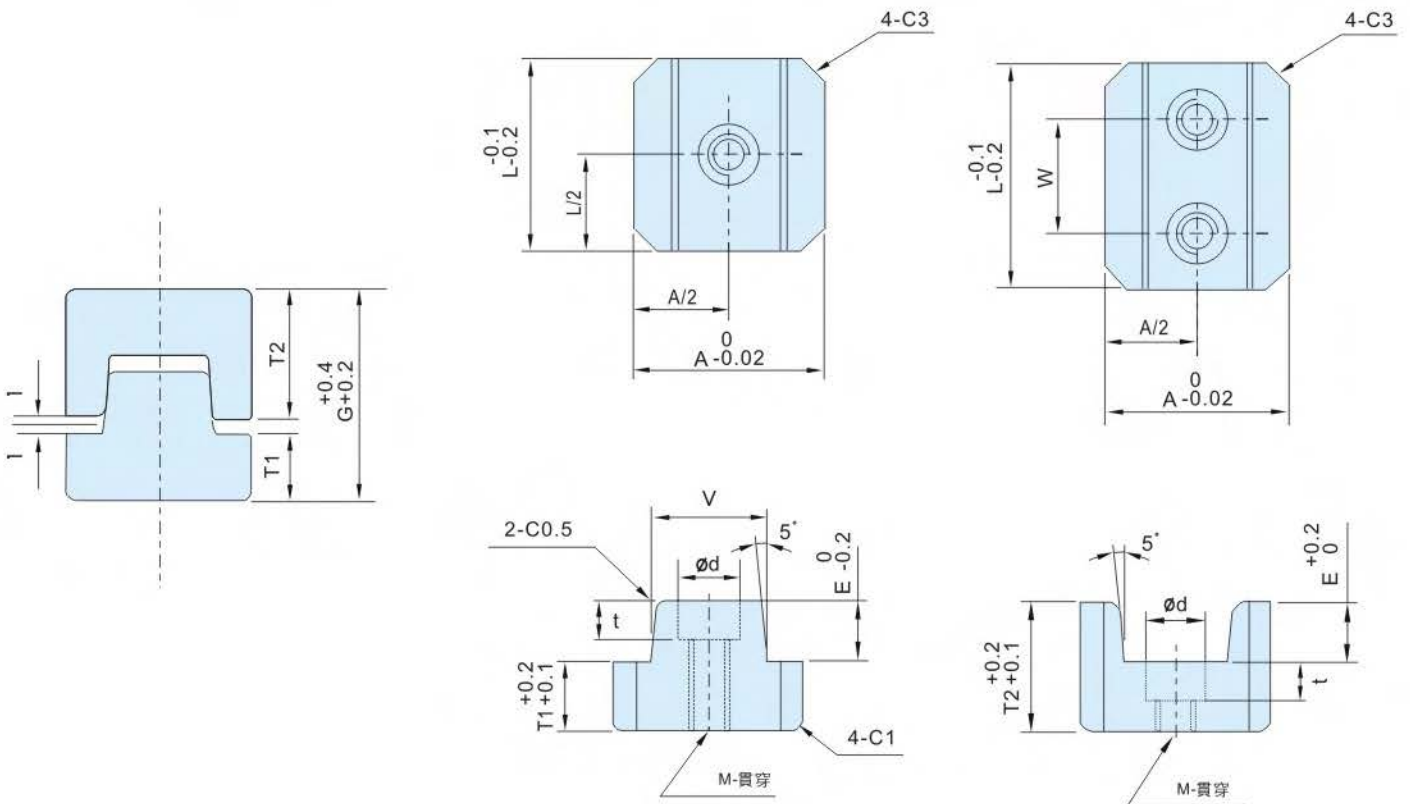
小型導位輔助器-KYZ TAPER BLOCK SET-KYZ

Material: SK2

Hardness: HRC54°~58°

Parallelism: $\pm 0.005\text{mm}$

Squareness: $\pm 0.005\text{mm}$



unit:mm

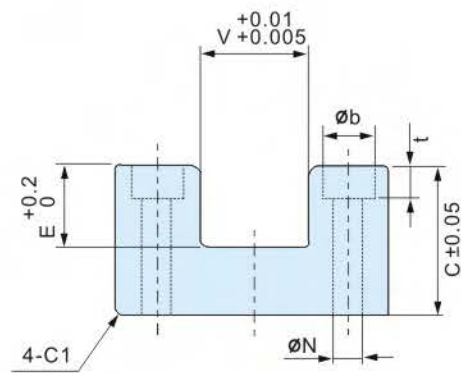
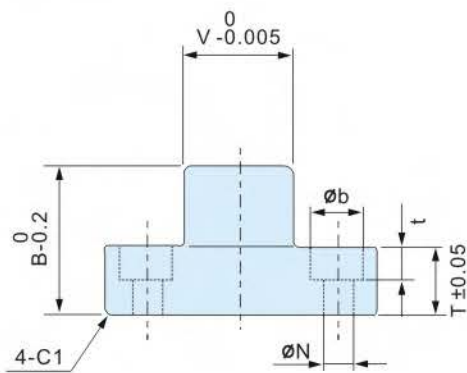
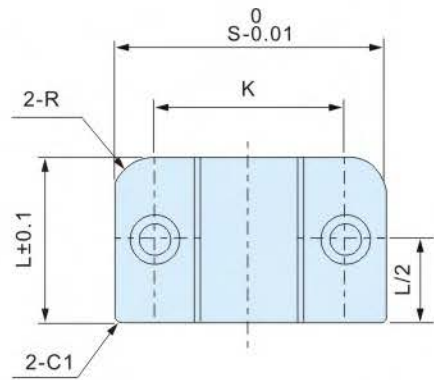
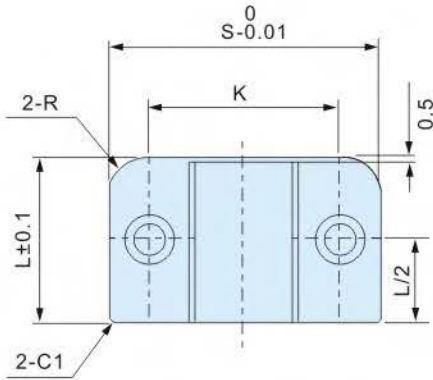
MODEL NO	A	L	W	T1	T2	E	V	t	Ød	G	M		N.W
											SHCS	TAPSIZE	
KYZ 25-25	25	25	-	9	17	8	15	5	8	28	M4	M5	0.12kg
KYZ 25-30		30	15										0.14kg
KYZ 25-40		40	20										0.19kg
KYZ 35-40	35	40	20	11	22	10	20	7	11	35	M6	M8	0.32kg
KYZ 35-50		50	30										0.41kg
KYZ 45-50	45	50	30	14	29	15	25	7	11	45	M6	M8	0.69kg

Material: SKD11/SK2

Hardness: HRC 58°~62°/HRC 54°~58°

Parallelism: ±0.005mm

Squareness: ±0.005mm



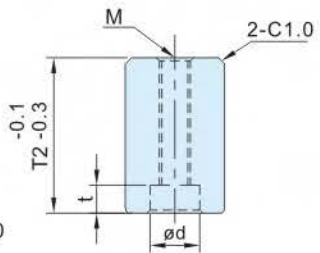
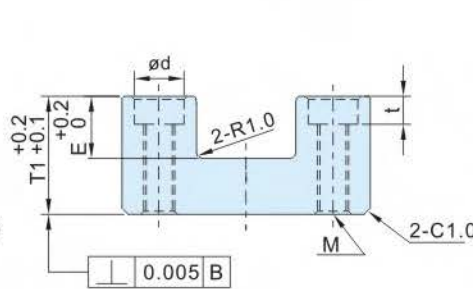
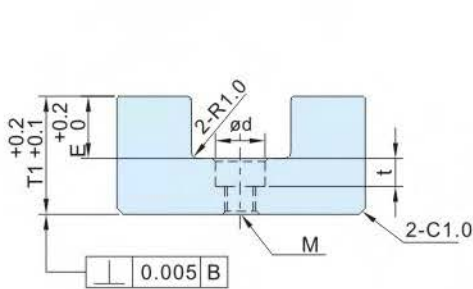
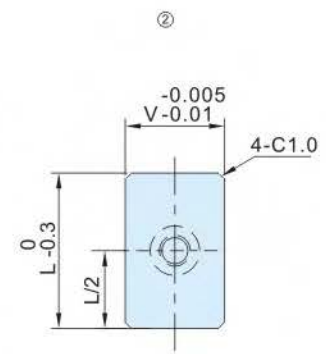
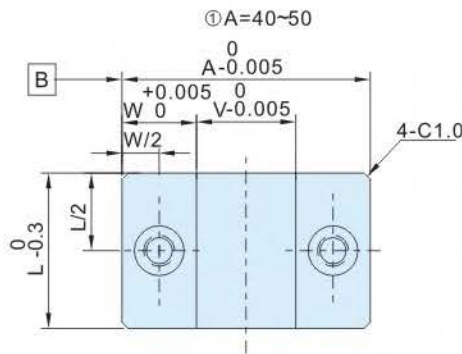
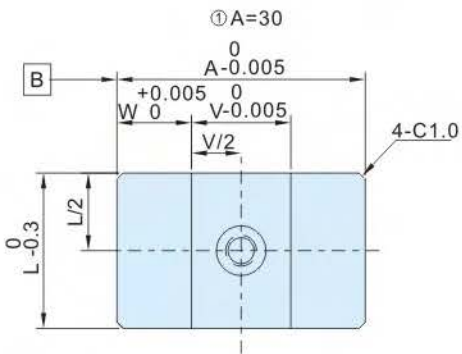
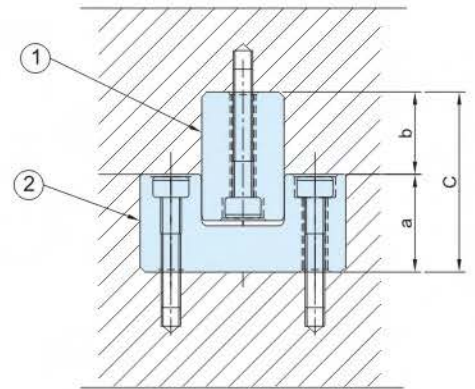
unit:mm

MODEL NO		S	L	C	T	B	V	R	t	ød	øN	E	K	SHCS	N.W
SKD11	SK2														
LK-15	LKC-15	38.1	25.4	22.17	9.47	22.1	12.7	7	6	10	6	12.7	25.4	10-32	0.2kg
LK-25	LKC-25	63.5	38.1	34.87	15.82	34.8	25.4	8.5	7.5	12	7.2	19.1	44.45	1/4-20	0.86kg
LK-35	LKC-35	88.9	50.8	44.4	19	44.2	36.58	9.5	11	16	10.5	25.3	63.5	3/8-16	2.08kg
LK-45	LKC-45	114.3	63.5	53.92	22.17	53.85	50.8	12	14	20	14	31.7	82.55	1/2-12	4kg



Material: SKD11
 Hardness: HRC58°~62°
 Parallelism: ± 0.005mm
 Squareness: ± 0.005mm

MODEL NO	a	b	c
30-14	14	13	27
30-19	19	13	32
40-19	19	16	35
40-24	24	16	40
50-29	29	21	50
50-34	34	21	55



unit:mm

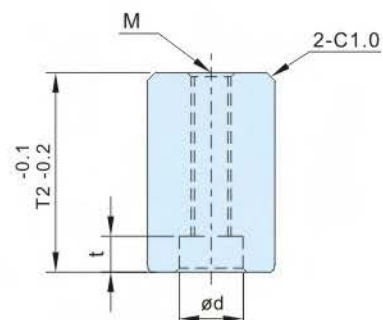
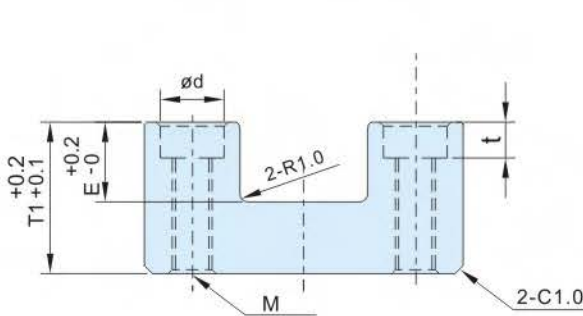
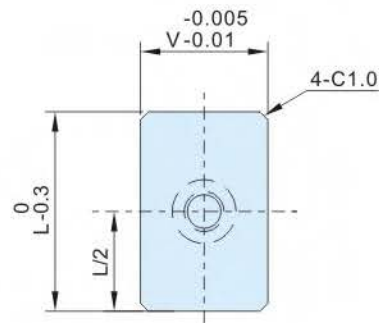
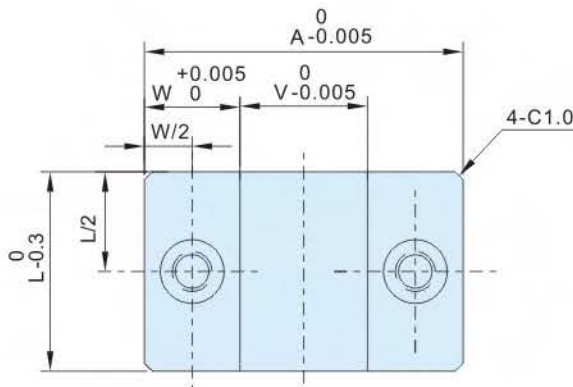
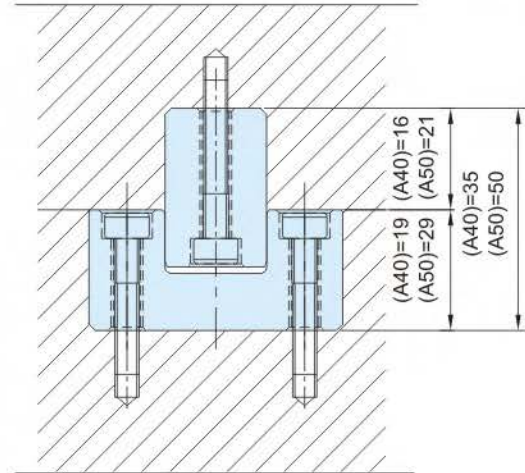
MODEL NO	A	T1	W	V	E	T2	M		Ød	t	L	N.W
							SHCS	TAPSIZE				
LBJX 30-14	30	14	9	12	6	18	M4	M5	8	4.5	20	0.08kg
LBJX 30-19		19										0.11kg
LBJX 40-19	40	19	12	16	10	25	M4	M5	8	4.5	25	0.18kg
LBJX 40-24		24										0.22kg
LBJX 50-29	50	29	15	20	15	35	M6	M8	11	6.5	30	0.39kg
LBJX 50-34		34										0.45kg

Material: SKD11

Hardness: HRC58°~62°

Parallelism: ± 0.005mm

Squareness: ± 0.005mm



unit:mm

MODEL NO	A	L	W	V	E	T1	T2	M		ød	t	N.W
								SHCS	TAPSIZE			
KYTJ-40	40	25	12	16	10	19	25	M4	M5	8	4.5	0.19kg
KYTJ-50	50	30	15	20	15	29	35	M6	M8	11	6.5	0.39kg



TAIS T-P CO., LTD.



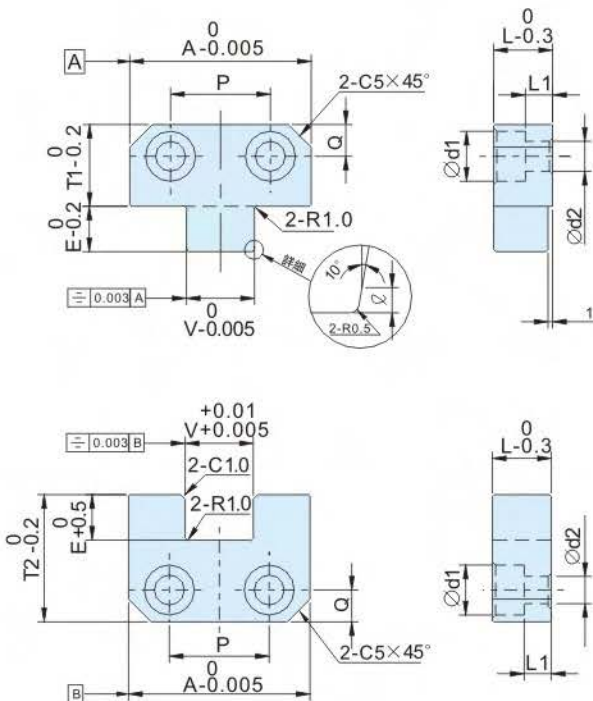
導位輔助器-TSSB TAPER BLOCK SET-TSSB

Material: SKD11

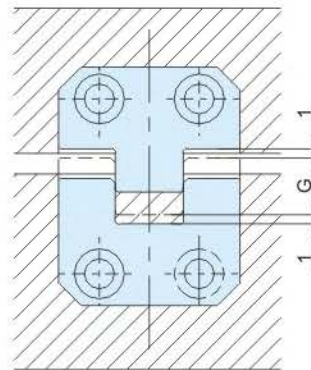
Hardness: HRC58°~62°

Parallelism: ± 0.005mm

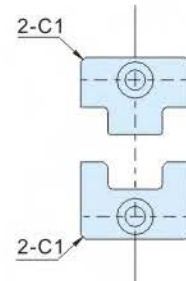
Squareness: ± 0.005mm



使用装置图



E	G 有效保持長 (mdx)
6	3.5
8	5.5
10	7.5
20	16.0
25	21.0
35	26.0
35	31.0
45	41.0



*TSSB20-6

unit:mm

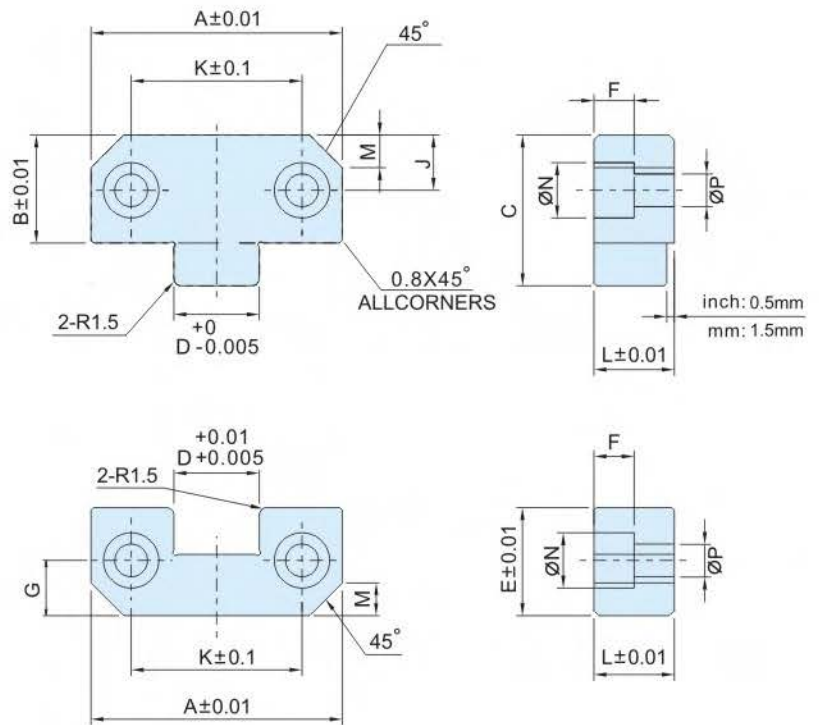
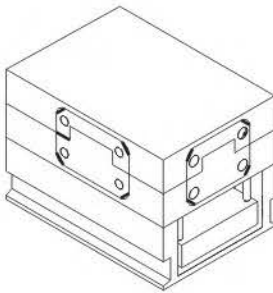
MODEL NO	A	E	P	Q	T1	T2	V	L	L1	Ød1	Ød2	ℓ	N.W
TSSB20-6	20	6	-	5	11	17	8	8	3	8	4.5	1	0.03kg
TSSB30-8	30	8	16	6	14	22	12	10	4	9.5	5.5	1	0.06kg
TSSB30-20		20				34						2	0.09kg
TSSB40-10	40	10	22	7	18	28	15	13	6	11	6.6	1	0.15kg
TSSB40-25		25				43						2	0.21kg
TSSB60-20	60	20	36	12	30	50	25	20	11	14	8.6	2	0.67kg
TSSB60-35		35				65							0.8kg
TSSB80-30	80	30	52	14	40	70	30	25	14	18	11	2	1.54kg
TSSB80-45		45				85							1.7kg

Material: SKD11 / SK2

Hardness: HRC58°~62° / HRC 54°~58°

Parallelism: ±0.005mm

Squareness: ±0.005mm



unit:mm

MODEL NO		A	B	C	D	E	F	G	J	K	M	L	ØN	ØP	N.W
SKD11	SK2														
KYT-38	KYTC-38	38	22	30	12	17	8	7	11	24	4	16	11	6.5	0.14kg
KYT-50	KYTC-50	50	21.5	30	17	21.5	8	11	11	34	6.5	16	11	6.5	0.23kg
KYT-75	KYTC-75	75	36	50	25	36	12	18	18	50	7	19	17	10.5	0.68kg
KYT-100	KYTC-100	100	45	65	35	45	12	22	22	70	7	19	17	10.5	1.21kg
KYT-125	KYTC-125	125	45	65	45	45	12	22	22	84	7	25	17	10.5	2.05kg

unit:mm(model no:inch)

MODEL NO		A	B	C	D	E	F	G	J	K	M	L	ØN	ØP	N.W
SKD11	SK2														
KYT-1.5"	KYTC-1.5"	38.1	22.1	29.97	12.7	22.1	8	7.39	11.1	23.32	4.83	15.75	11	7	0.17kg
KYT-2"	KYTC-2"	50.8	22.1	29.97	17.27	22.1	8	9.53	11.1	31.74	4.83	15.75	11	7	0.24kg
KYT-3"	KYTC-3"	76.2	34.54	48.51	25.4	34.8	11	17.48	17.48	57.14	9.65	18.93	16	10.5	0.67kg
KYT-4"	KYTC-4"	101.6	47.5	67.06	34.93	47.5	11	22.23	22.23	69.84	12.7	18.93	16	10.5	1.29kg
KYT-5"	KYTC-5"	127	47.5	67.06	44.45	47.5	14	22.23	22.23	88.9	12.7	28.44	20	14	2.41kg



TAIS T-P CO., LTD.



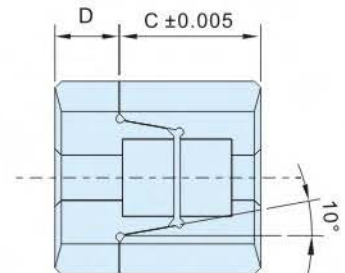
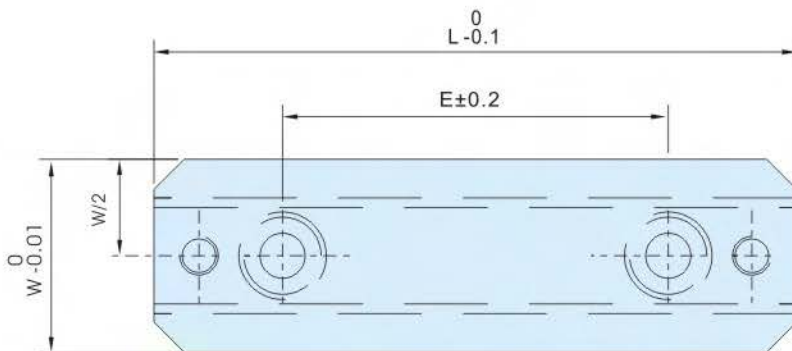
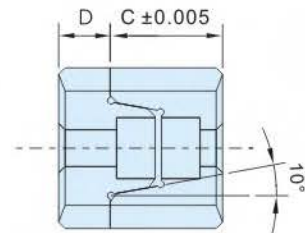
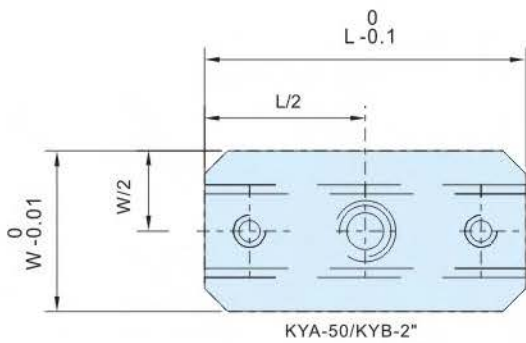
大型導柱輔助器-KYA/KYB TAPER BLOCK SET-KYA/KYB

Material: SK2

Hardness: HRC54°~58°

Parallelism: $\pm 0.005\text{mm}$

Squareness: $\pm 0.005\text{mm}$



unit:mm

MODEL NO	E	L	W	C	D	Mx45°	SHCS	N.W
KYA-50	-	50	25	17.5	7.5	3.5	M5-08	0.22kg
KYA-100	60	100	30	22	10	4.7	M6-1.0	0.68kg
KYA-150	100	150	40	25	13	4.3	M8-1.25	1.65kg

unit:mm(model no:inch)

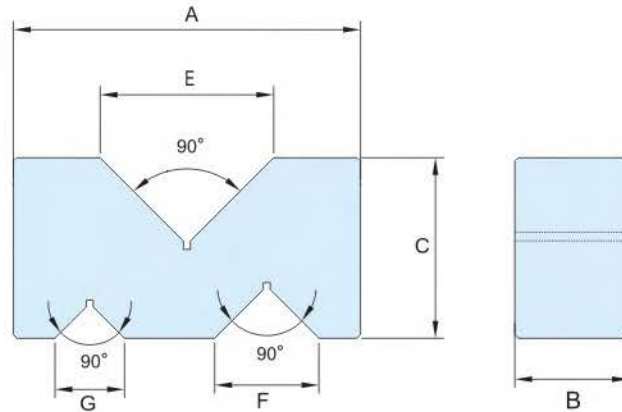
MODEL NO	E	L	W	C	D	Mx45°	SHCS	N.W
KYB-2"	-	50.29	25.36	17.53	7.92	3.5	3/16-24	0.22kg
KYB-4"	63.5	101.09	31.71	22.1	9.53	4.7	1/4-20	0.72kg
KYB-6"	101.6	151.89	38.06	25.4	12.7	4.3	5/16-18	1.6kg

Material: SK2

Hardness: HRC54°~58°

Parallelism: ±0.003mm

Squareness: ±0.005mm



unit:mm

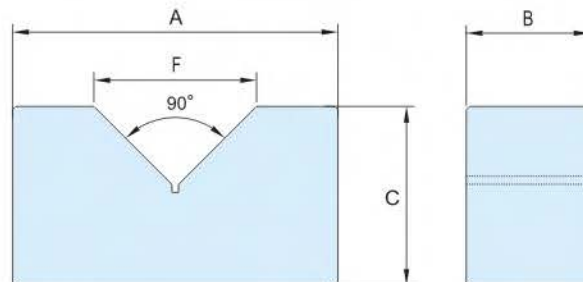
MODEL NO	A	B	C	E	F	G	N.W	SET
PNH-PM50	50	19	24	24	17	13	0.3kg	2/SET
PNH-PM75	75	24	35	37	24	16	0.8kg	2/SET
PNH-PM100	100	33	52	50	30	20	2.1g	2/SET
PNH-PM125	125	44	69	63	37	26	4.7kg	2/SET
PNH-PM150	150	50	80	75	45	30	7.3kg	2/SET

Material: SK2

Hardness: HRC54°~58°

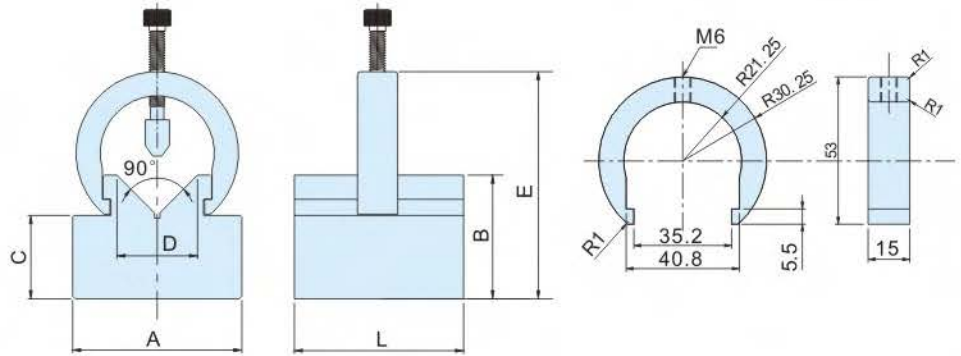
Parallelism: ±0.003mm

Squareness: ±0.005mm



unit:mm

MODEL NO	A	B	C	F	N.W.	SET
PNH-PV50	50	22	28	30	0.4kg	2/SET
PNH-PV75	75	35	50	40	1.7kg	2/SET
PNH-PV100	100	38	60	50	2.9kg	2/SET
PNH-PV125	125	45	70	60	4.7kg	2/SET
PNH-PV150	150	60	90	70	9.2kg	2/SET



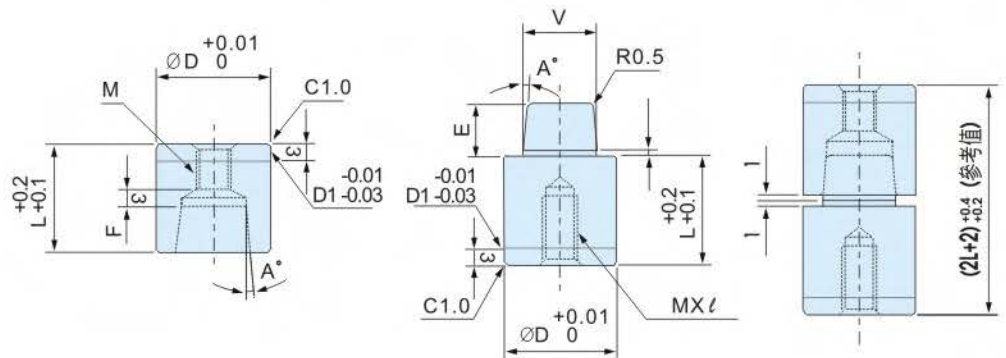
Material: SK2
Hardness: HRC54°~58°
Parallelism: ± 0.005mm
Squareness: ± 0.005mm

unit:mm

MODEL NO	L	A	B	C	D	E	N.W
PNH-VC63	63	63	46	31	30	85.5	1.26kg
PNH-VC70	70	63	46	31	30	85.5	1.35kg

TABLE PIN SET-TPN

Material: SKD11/SUJ2
Hardness: HR58°~62°/HRC56°~60°
Parallelism: ± 0.005mm
Squareness: ± 0.005mm
Pin/Bush external diameter/bottom axis ± 0.005mm



unit:mm

MODEL NO	D	A	L	V	E	F	M x ℓ	N.W
TPN-10	10	1°	14	7	6	5	M4x10	0.01kg
TPN-13	13		14	7	6	5	M4x10	0.025kg
TPN-16	16		14	10	6	5	M5x10	0.04kg
TPN-20	20	3°	19	13	9	8	M6x12	0.09kg
TPN-25	25		24	16	12	11	M8x16	0.18kg
TPN-30	30		29	20	15	14	M10x20	0.32kg
TPN-32	32	5°	29	20	15	14	M10x20	0.36kg
TPN-35	35		34	24	18	17	M12x24	0.48kg



● **工件加工範圍**

研磨外徑..... $\varnothing 1\sim 10\text{mm}$

伸出長度..... $0.5\sim 10\text{mm}$

工件長度..... $10\sim 60\text{mm}$

重量..... 2.32kg

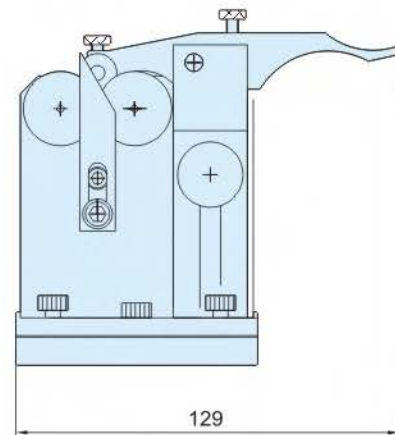
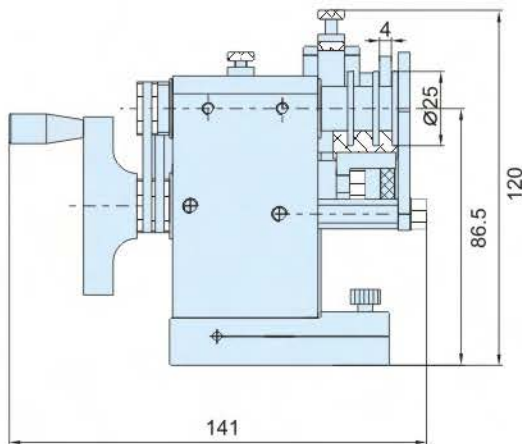
● **Working-piece processing scope**

Grinding external diameter..... $\varnothing 1\sim 10\text{mm}$

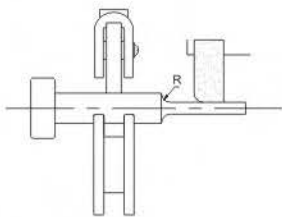
Extension length..... $0.5\sim 10\text{mm}$

Working-piece length..... $10\sim 60\text{mm}$

Weight..... 2.32kg



- 小型沖子研磨機可從事小到 $0.5\times 10\text{L}$ 極小沖頭的研磨。
- 操作簡便，可得到極高的精密度，最極小沖頭的研磨利器。
- 此款小型沖子研磨機可當檢驗器用，檢測 20mm 以下真圓度。
- This grinder can be grinded to min $0.5\text{mm}\times 10\text{L}$ punch.
- Easy operation, high accuracy best choice for small punches.
- This small-sized punch grinder can also be used for examination purpose, testing the roundness of circles with 20mm or less for diameter.

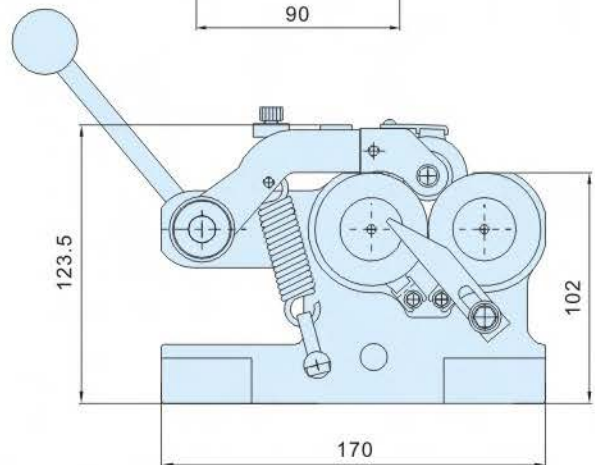
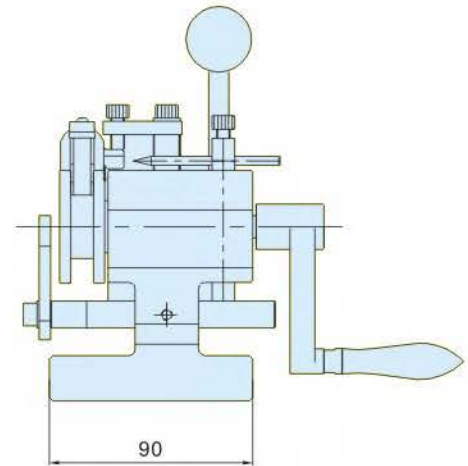


● 工件加工範圍

研磨外徑..... $\varnothing 3 \sim 25\text{mm}$
 伸出長度..... $0.5 \sim 25\text{mm}$
 工件長度..... $20 \sim 120\text{mm}$
 重量..... 5.8kg

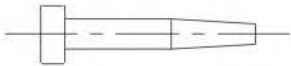
● Working-piece processing scope

Grinding external diameter..... $\varnothing 3 \sim 25\text{mm}$
 Extension length..... $0.5 \sim 25\text{mm}$
 Working-piece length..... $20 \sim 120\text{mm}$
 Weight..... 5.8kg

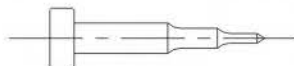


FOR EXAMPLE

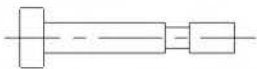
1. Conical grinding



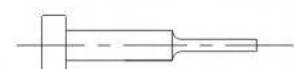
2. Mult-division grinding



3. Cylindrical grinding

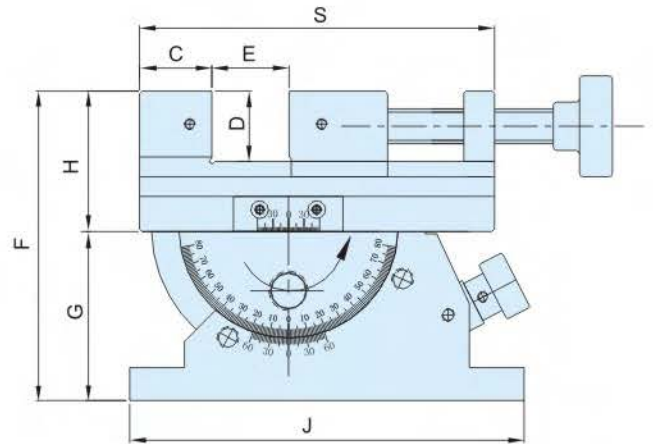
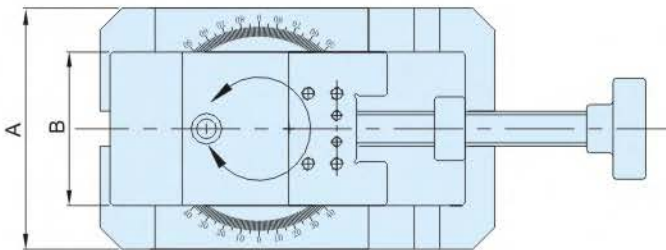


4. Radius grinding



- 沖子研磨機安裝在平面磨床上，做為研磨圓形沖頭的工具。
- 使用壓臂上的按壓滾輪，可穩定操作，研削精密度可達 $\pm 0.005\text{mm}$ 內。
- 研磨加工範圍 $\varnothing 3 - \varnothing 6\text{mm}$ ，運轉中可自動變得同心圓，無需任何調整。
- Installed in the surface grinding machine, this punch grinder is used as a tool to grind round shaped punch heads.
- Using the punch roller for stable operations. High precision grinding of working pieces reaches 0.005mm and below.
- Grinding scope: $\varnothing 3 - \varnothing 6\text{mm}$, Concentric circles are available during operations and no adjustments are needed.

Material: SK2
 Hardness: HRC54°~58°
 Parallelism: ± 0.01mm
 Squareness: ± 0.01mm

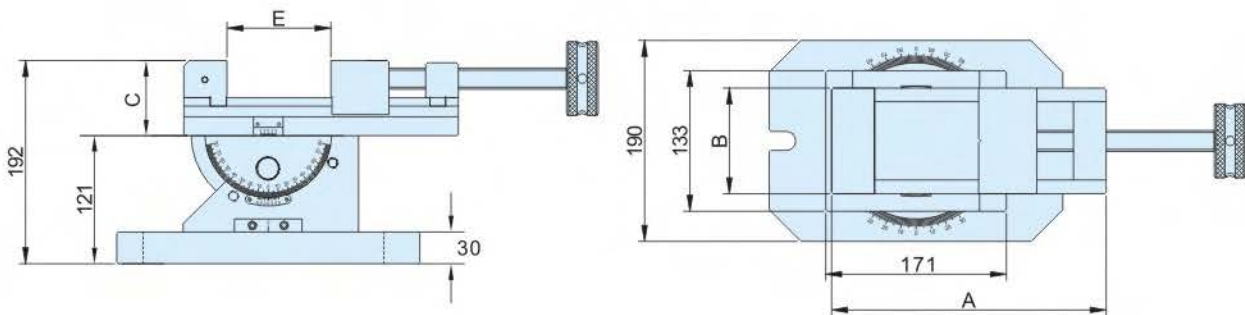


- 刻度精確，適合精密加工。
 - 水平回轉360°
 - 水平傾斜45°
 - 最適合精密平磨、搪銑床、放電加工機等之平面或傾斜面及角度斜孔加工。
- Precision graduation for accurate reading.
 - Horizontal swivel through 360° .
 - The unit tilts45° vertically.
 - Lts swivelling and tilting features make this unit well suited for straight or inclined surface, angular drilling machining on various machine tools as precision grinding machine, boring and milling machine, electrical discharge machine etc.

unit:mm

MODEL NO	A	B	C	D	E	F	G	H	S	J	N.W
PNH-HD80	110	70	33	32	80	141	77	64	162	180	12.9kg

Material: SKS93
Hardness: HRC56°~60°
Parallelism: ± 0.01mm
Squareness: ± 0.01mm



- 主體部分以高碳鋼經熱處理硬化後精密研磨而成，精密度在 0.01mm 以內。萬力主體可做 360 度回轉，傾斜角度為 0~45 度，並且可以自由調整，萬力回轉到一定範圍內，傾斜角度可達到 80 度。
- 適用於銑床、磨床、放電加工等機械進行各種角度的加工。為擴大工作物的加工範圍，在高度方面採用了低式設計；寬度方面採用了小化設計。同時也設定在銑床上面替代銑床萬力當多功能虎鉗使用。
- The high carbon steel body is precisely grinded after the heat treatment and hardening, with the precision below 0.01mm. The universal 3-way angle vise features a 360 rotation and a slant angle of 0~45, which can reach up to 80° under appropriate adjustments.
- This angle vise is suitable for any angle of processing in milling, grinding, and electric discharge machines. Its altitude adopts the low type designing and minimizes the width in order to offer more processing scopes of working pieces. Meanwhile, the device replaces as a multi-function vice in the milling machine

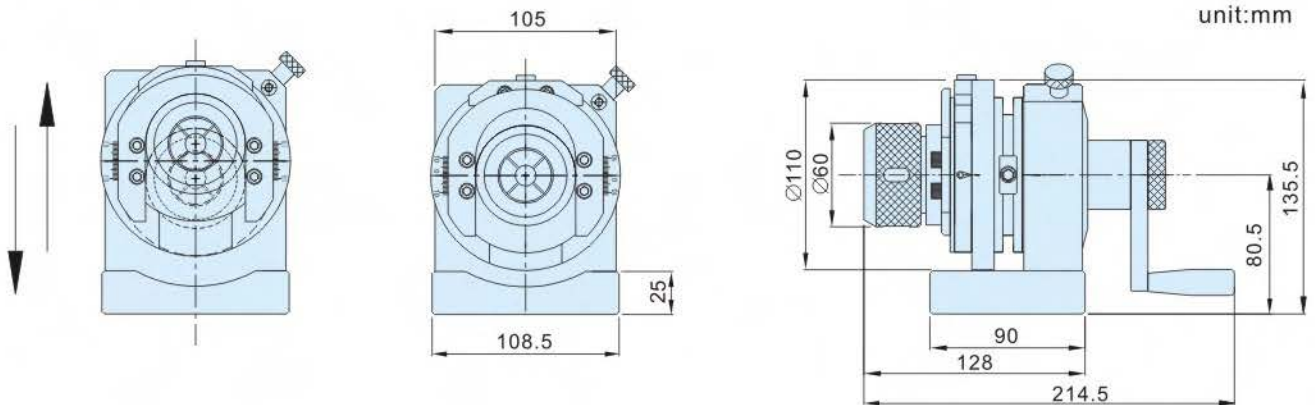
unit:mm

MODEL NO	A	B	C	E	N.W
PNH-HDV150	260	100	71	155	21.7kg
PNH-HDV150D(含正弦台)	260	100	71	155	32.5kg



- 主要參數
 - 基準精度.....0.01mm
 - 筒夾直徑..... $\varnothing 3\sim 25\text{mm}$
 - 中心高度.....80~81mm
 - 筒夾偏心上下調整量..... $\pm 10\text{mm}$
 - 分度盤齒數、精度.....24、 $15^\circ \pm 5''$
 - 重量.....7.75kg
- Major parameters
 - Datum precision.....0.01mm
 - Punch diameter..... $\varnothing 3\sim 25\text{mm}$
 - Center height.....80~81mm
 - Punch center adjustment..... $\pm 10\text{mm}$
 - Rotary Table Gear No./precision....24、 $15^\circ \pm 5''$
 - Weight.....7.75kg

上下調(偏心 $\pm 10\text{mm}$)



- 筒夾沖子成型器適用於平面磨床，放電機及萬能工具磨床，對於各種形狀的沖頭可進行精密、快速研磨加工，對於圓徑不同規格的工件可不必調整中心高度即可使用。
- 該產品設計了能上下偏心調動功能，可快捷做上下偏心加工。有中心穿孔，便於超長工件加工，在一定範圍內可以進行定位加工。
- Collet punching former is used in surface grinding machine, discharging machine and universal tool and cutter grinder, it grinds and machines all shapes of punches accurately and rapidly, it is no need to adjust height to process different diameter work pieces.
- This product is designed to be adjusted easily up and down and eccentrically, it also can drill central hole and work on super long piece, and in some situations it can carry out positioning machining.



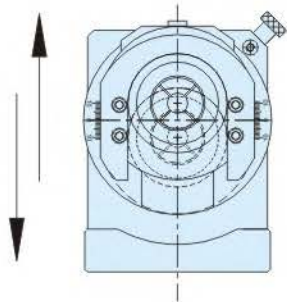
● 主要參數

- 基準精度..... 0.01mm
- 筒夾直徑..... $\varnothing 3 \sim 25\text{mm}$
- 中心高..... 88 ~ 89mm
- 筒夾偏心上下調整量..... $\pm 10\text{mm}$
- 筒夾橫向移動量..... $\pm 12.5\text{mm}$
- 分度盤齒數、精度..... 24、 $15^\circ \pm 5''$
- 淨重..... 8.9kg

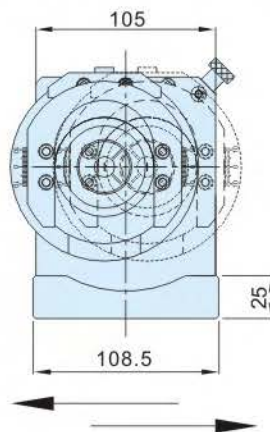
● Major parameters

- Datum precision..... 0.01mm
- Punch diameter..... $\varnothing 3 \sim 25\text{mm}$
- Center height..... 88~89mm
- Punch center adjustment..... $\pm 10\text{mm}$
- Transversal travel of slider..... $\pm 12.5\text{mm}$
- Rotary Table Gear No./precision..... 24、 $15^\circ \pm 5''$
- Weight..... 8.9kg

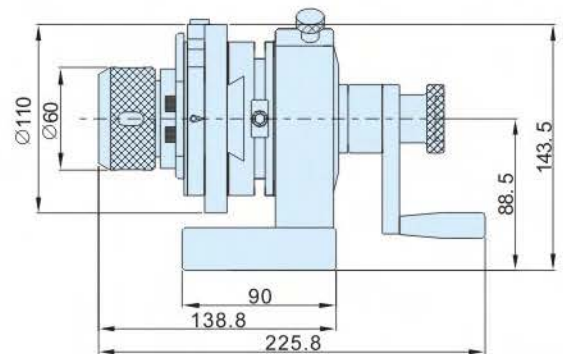
上下調(偏心 $\pm 10\text{mm}$)



橫向移動
(左右 $\pm 12.5\text{mm}$)



unit:mm



- 筒夾雙向沖子成型器適用於平面磨床、放電機及萬能工具磨床，對於各種形狀的沖頭可進行精密、快速研磨加工，對於圓徑不同規格的工件可不必調整中心高度即可使用。特別適合於數量較多且規格不一的工件。
- 該產品設計了能上下偏心調整和橫向移動雙向功能。可快捷做上下偏心加工和橫向左右移動加工，從而能提高加工效率。
- Collet double-direction punching former is used in surface grinding machine, discharging machine and universal tool and cutter grinder, it grinds and machines all shapes of punches accurately and rapidly, it is no need to adjust height to process different diameter work pieces.
- It is suitable for different specification pieces and for mass productions. This product is designed to be adjusted up and down and eccentrically, and be adjusted horizontally in double directions. It can be adjusted rapidly and works efficiently.

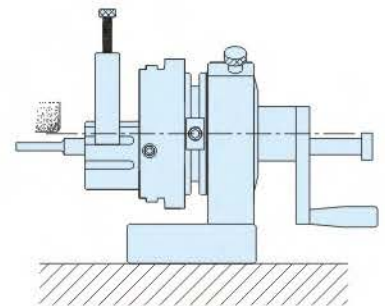
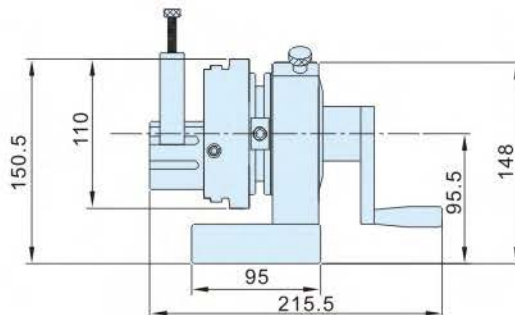
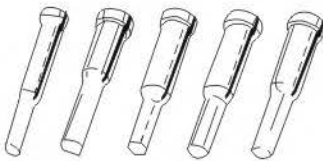
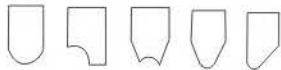


● 主要參數

V形槽夾持直徑.....	Ø4~50mm
修整砂輪最大直徑.....	Ø200mm
V形槽夾持長度.....	22mm
中心高.....	95~96mm
修整砂輪圓弧最大直徑	
凸弧.....	R55mm
凹弧.....	R110mm
V形塊調整量.....	33mm
分度盤齒數、精度.....	24、15°±5"
淨重.....	9.3kg

● Major Parameters

V-Groove Holding Diameter.....	Ø4~50mm
Dressing Wheel Maximum Diameter....	Ø200mm
V-Groove Holding Length.....	22mm
Center Height.....	95~96mm
Dressing Wheel Arc Maximum Diameter	
Flange Arc.....	R55mm
Indent Arc.....	R110mm
V-Shape Block Adjustment.....	33mm
Rotary Table Gear No./ Precision.....	24、15°±5"
Weight.....	9.3kg



- 大型單向沖子成型器適合於平面磨床放電加工機及萬能工具磨床。對於各種形狀的沖頭可進行精密研磨，本產品具備中心貫穿孔，可供工件延伸加工。
- 附有弓柄臂，用於修整內外圓弧。
- Large-scale standard single punching former is suitable for flat-surfaced grinders and universal grinder and cutters. Depending on the types of shapes required, punching head can be created with great precision by the punch formers. This product has the function of perforation through the mid-point and different functions and abilities may be added to extent it performances.
- It comes with an arc-bow handle that assist the adjustment and maintenance of the internal and external circular grinder.

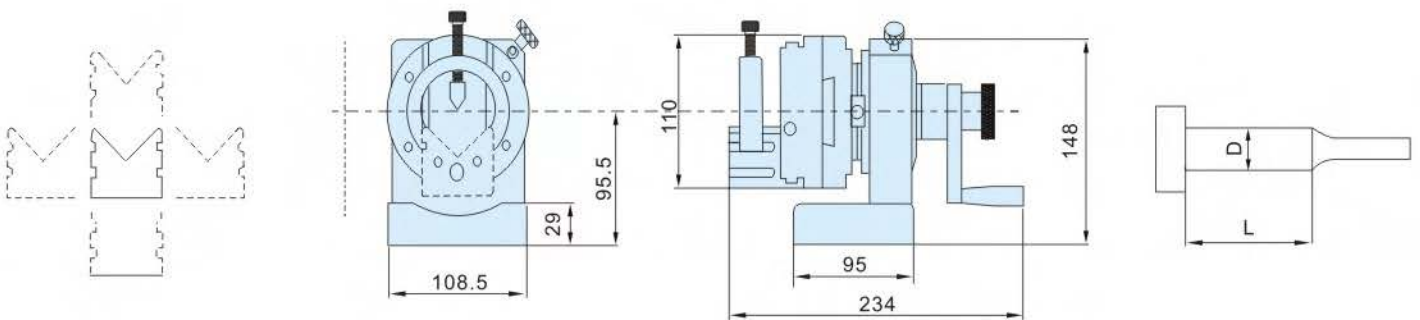
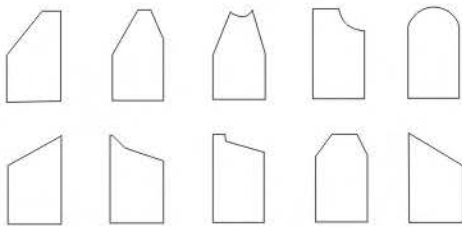


主要參數

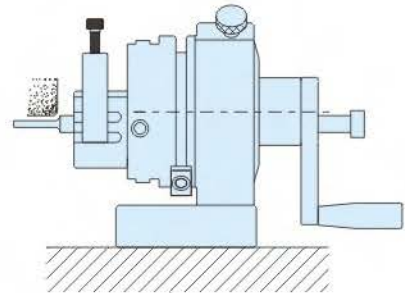
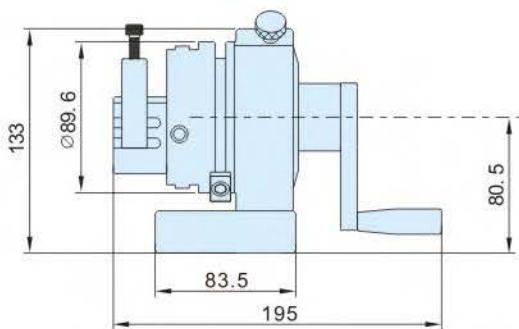
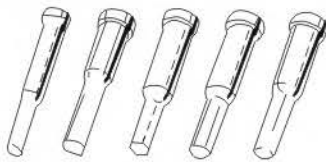
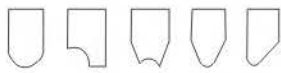
V型槽夾持直徑.....	Ø4~50mm
修整砂輪最大直徑.....	Ø200mm
V型夾持長度.....	22mm
中心高.....	95~96mm
修整砂輪圓弧最大直徑	
凸弧.....	R55mm
凹弧.....	R110mm
滑動處橫向移動量.....	±17mm
V型塊調整量.....	33mm
分度盤齒數、精度.....	24、15°±5"
重量.....	11.4kg

Major Parameters

V-groove Holding Diameter	Ø4~50mm
Dressing Wheel Maximum Diameter	Ø200mm
V-groove Holding Length.....	22mm
Center Height	95~96mm
Dressing Wheel Arc Maximum Diameter	
Flange Arc.....	R55mm
Indent Arc.....	R110mm
Sliding Horizontal Movement	±17mm
V-shape Block Adjustment	33mm
Rotary Table Gear No./ Precision	24、15°±5"
Weight	11.4kg



- 大型雙向沖子成型器適用於平面磨床及萬能工具磨床。對於各種形狀的沖頭進行精密研磨，並可用於 EDM 放電加工
- 可用於修整直線和外圓弧 (內 R 和外 R) 的各截形砂輪。
- This large-sized, two-way punch former is suitable for the use in both surface grinders and universal tool grinders. It is ideal for the precision grinding for various punch heads and electric discharge machine (EDM) processing.
- Dressing straight lines and internal/external R sanding wheels are available



● 主要參數

V型槽夾持直徑.....	Ø4~30mm
修整砂輪最大直徑.....	Ø200mm
V型夾持長度.....	22mm
中心高.....	80~81mm
修整砂輪圓弧最大直徑	
凸弧.....	R45mm
凹弧.....	R100mm
V型塊調整量.....	25mm
分度盤齒數、精度.....	24、15°±5"
重量.....	7kg

● Major Parameters

V-groove Holding Diameter	Ø4~30mm
Dressing Wheel Maximum Diameter	Ø200mm
V-groove Holding Length.....	22mm
Center Height	80~81mm
Dressing Wheel Arc Maximum Diameter	
Flange Arc.....	R45mm
Indent Arc.....	R100mm
V-shape Block Adjustment	25mm
Rotary Table Gear No./ Precision	24、15°±5"
Weight	7kg

- 單向沖子成型器適合於平面磨床放電加工機及萬能工具磨床。對於各種形狀的沖頭可進行精密研磨，本產品具備中心貫穿孔，可供工件延伸加工。
- 附有弓柄臂，用於修整內外圓弧。
- Single punching former is suitable for flat-surfaced grinders and universal grinder and cutters. Depending on the types of shapes required, punching head can be created with great precision by the punch formers. This product has the function of perforation through the mid-point and different functions and abilities may be added to extent it performances.
- It comes with an arc-bow handle that assist the adjustment and maintenance of the internal and external circular grinder.

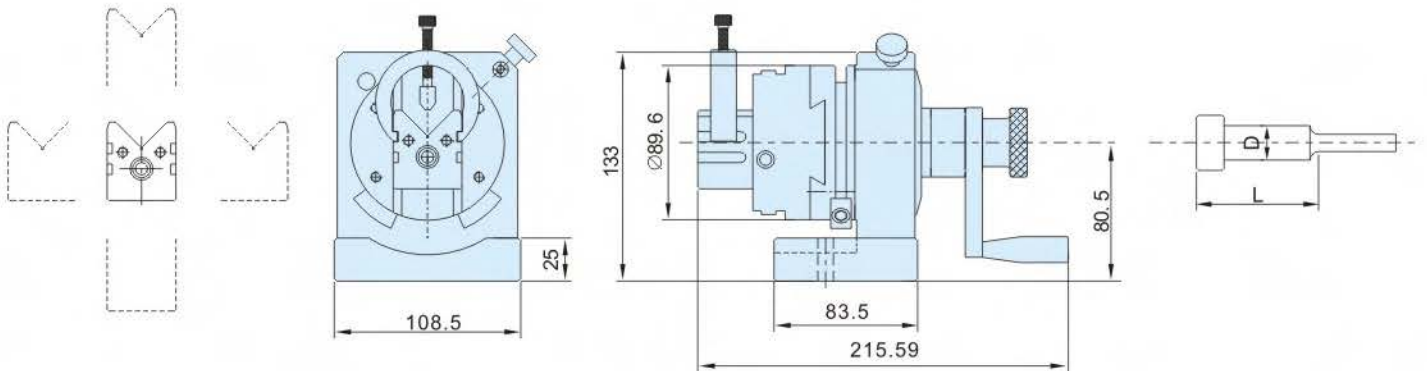
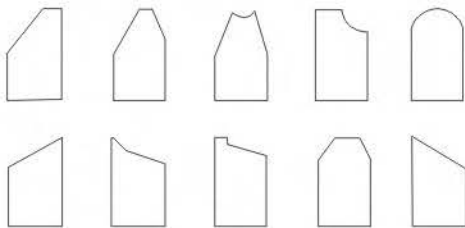


● 主要參數

V型槽夾持直徑.....	Ø4~30mm
修整砂輪最大直徑.....	Ø200mm
V型夾持長度.....	22mm
中心高.....	80~81mm
修整砂輪圓弧最大直徑	
凸弧.....	R45mm
凹弧.....	R100mm
滑動處橫向移動量.....	±12.5mm
V型塊調整量.....	25mm
分度盤齒數、精度.....	24、15°±5"
重量.....	8.5kg

● Major Parameters

V-groove Holding Diameter	Ø4~30mm
Dressing Wheel Maximum Diameter	Ø200mm
V-groove Holding Length.....	22mm
Center Height	80~81mm
Dressing Wheel Arc Maximum Diameter	
Flange Arc.....	R45mm
Indent Arc.....	R100mm
Sliding Horizontal Movement	±12.5mm
V-shape Block Adjustment	25mm
Rotary Table Gear No./ Precision	24、15°±5"
Weight	8.5kg



- 雙向沖子成型器適用於平面磨床及萬能工具磨床，可對於各種形狀的沖頭進行精密研磨，並可用於E.D.M. 放電加工機電極的精密加工。本產品具備橫向移動雙向功能。
- 附有弓柄臂，具有修整砂輪的功能，可用於修整直線的圓弧組成的各截形砂輪。
- This two-way punch former is suitable for the use in both surface grinders and universal tool grinders. It is ideal for the precision grinding of various punch heads and electric discharge machine (EDM) processing. This product has the function of lateral and bidirectional movements.
- The attached stick-arm features the dressing wheel function. Dressing straight lines and various sanding wheels are available.

Material: SK2

Hardness: HRC54°~58°

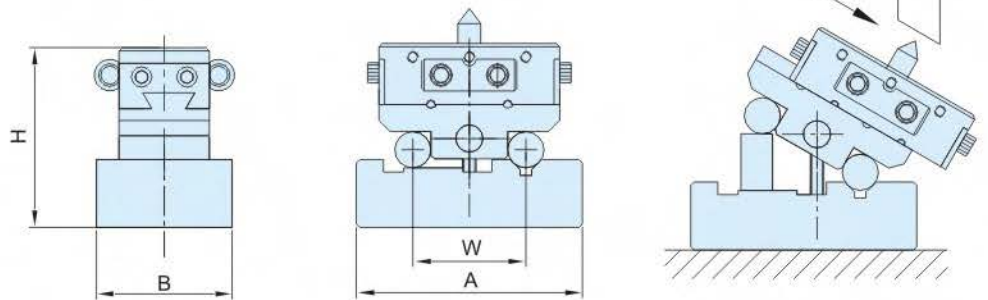


PNH-JA50A

● PNH-JA50A

砂輪角度由 0~60° 隨意修整，最大行程 50mm，並可做為角度檢查，兩整輪的中心距離 ±0.002mm 內。

- Dressing angles range from 0~60°, with the maximum travel reaching 50mm. Angle inspection is available. Center distance between wheels: ±0.002mm



PNH-JA50B

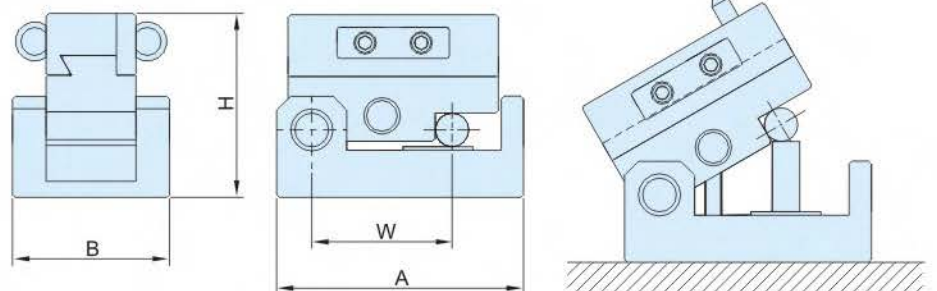
● PNH-JA50B/C

採用一體成型的設計理念，從 0~45° 可任意的修整，最大行程 50mm，並可做為正弦的角度檢查，適合臥立使用。

- Adopting the one-body formed design, the dressing angle between 0~45° is adjustable. The maximum travel reaches 50mm and the sine angle inspection is available. Suitable for vertical and horizontal uses



PNH-JA50C



unit:mm

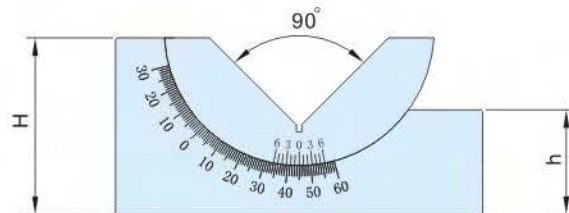
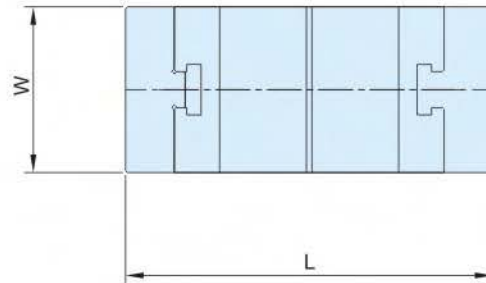
MODEL NO	A	B	H	W	ANGLE	N.W.
PNH-JA50A	100	60	79.5	50	0~60°	2.1kg
PNH-JA50B	88	56	67		0~45°	1.51kg
PNH-JA50C	88	56	65.5			1.46kg

Material: SK2

Hardness: HRC54° ~ 58°

Parallelism: ± 0.005mm

Squareness: ± 0.005mm



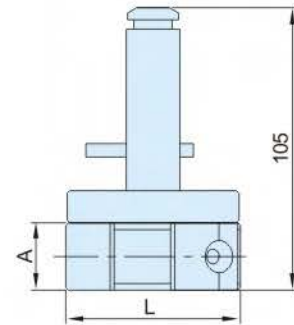
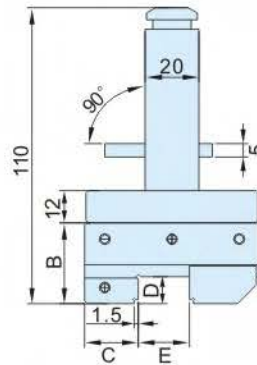
- AP 角度整規系列，是採用 SK2 高碳鋼經精密研磨而成 ±0.005mm，角度精度為 ±10”
- AP angle plate series adopt the SK2 high carbon steel, with the grinding precision reaching ±0.005mm and the angle precision ±10”.

unit:mm

MODEL NO	L	W	H	h	N.W.
PNH-AP1	102	46	49	29	1.4kg
PNH-AP2	102	30	49	29	0.9kg
PNH-AP3	75	25	35	21.5	0.4kg

Type: 刻字、銘板

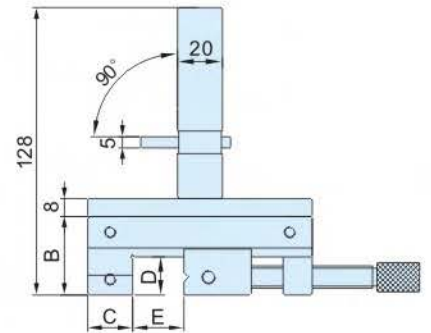
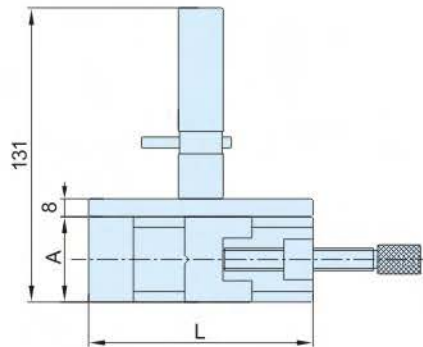
Material: SUS440
Hardness: HRC50° ~ 56°
Parallelism: ± 0.003mm
Squareness: ± 0.005mm



unit:mm

MODEL NO	L	A	B	C	D	E	N.W
PNH-EH20	65	25	30	20	10	20	0.8kg

Material: SUS440
Hardness: HRC50° ~ 56°
Parallelism: ± 0.003mm
Squareness: ± 0.005mm

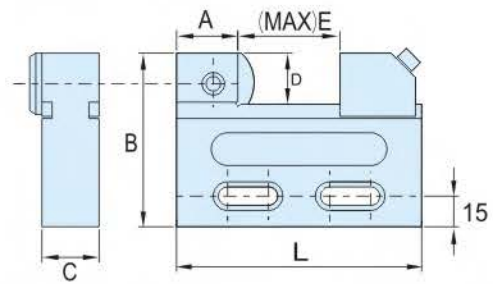


- EH 系列之迷你型萬力，適合用來作為放電電極夾具。
- 萬力滑座十字 V 型槽設計提供各種形狀的電板作垂直或水平方向進行放電加工處理。
- EH series mini-type vise is suitable for use as electrode fixture.
- The sliding seat cross V-groove offers various electrode plates for either vertical or horizontal electric discharge processing.

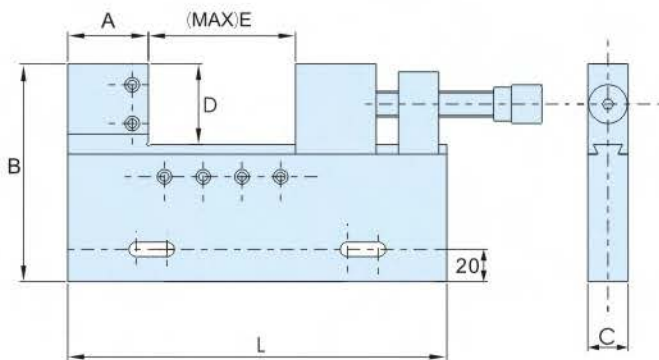
unit:mm

MODEL NO	L	A	B	C	D	E	N.W
PNH-EH35	100	38	35	20	17	48	1.12kg

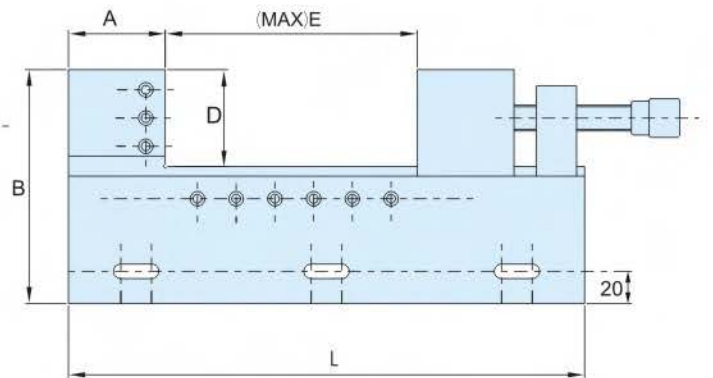
Material: SUS440
Hardness: HRC50° ~ 56°
Parallelism: ± 0.003mm
Squareness: ± 0.005mm



PNH-ST50



PNH-ST100



PNH-ST150

unit : mm

MODEL NO	L	A	B	C	D	E	N.W
PNH-ST50	120	25	85	28	25	0-50	1.03kg
PNH-ST100	235	50	135	25	50	0-100	4.81kg
PNH-ST150	320	60	145	25	60	0-150	6.41kg

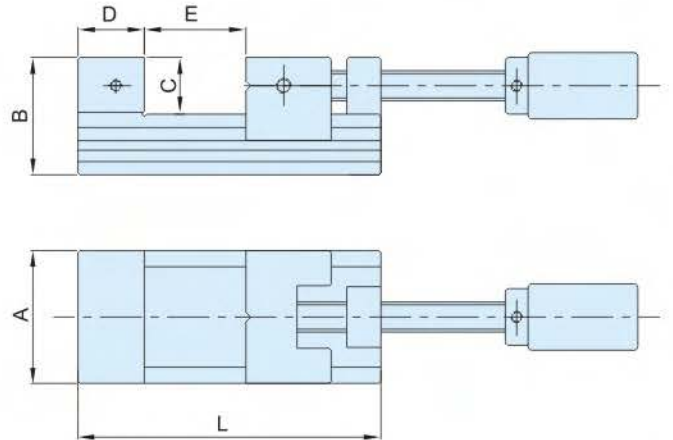


TAIS T-P CO., LTD.



轉牙型不鏽鋼精密萬力
TOOL MAKERS VISE OF STAINLESS STEEL

Material: SUS440
 Hardness: HRC50°~56°
 Parallelism: ±0.003mm
 Squareness: ±0.005mm



unit : mm

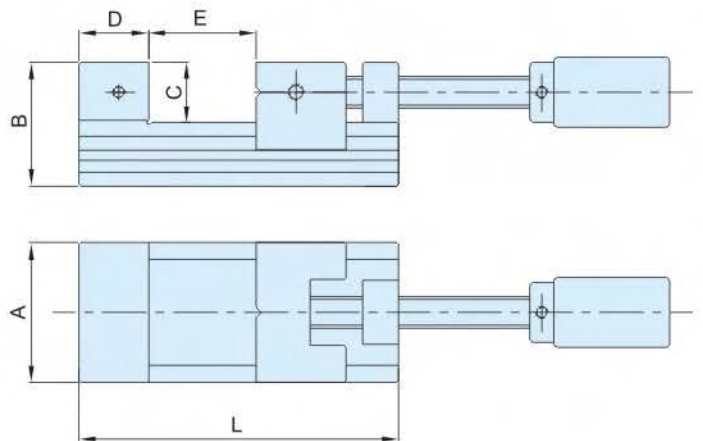
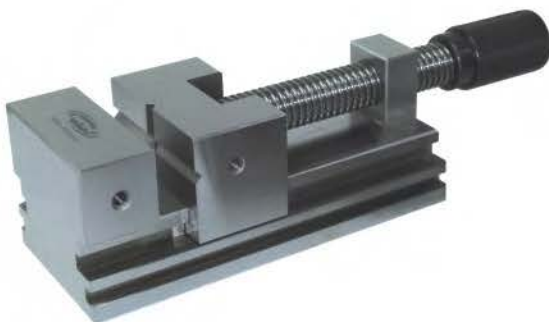
MODEL NO	L	A	B	C	D	E	N.W
PNH-SVE30	180	70	69	30	35	0-100	5.0kg



超精密工具萬力

SUPER PRECISION TOOL MAKERS VISE

Material: SK2
 Hardness: HRC54°~58°
 Parallelism: ±0.003mm
 Squareness: ±0.003mm



unit:mm

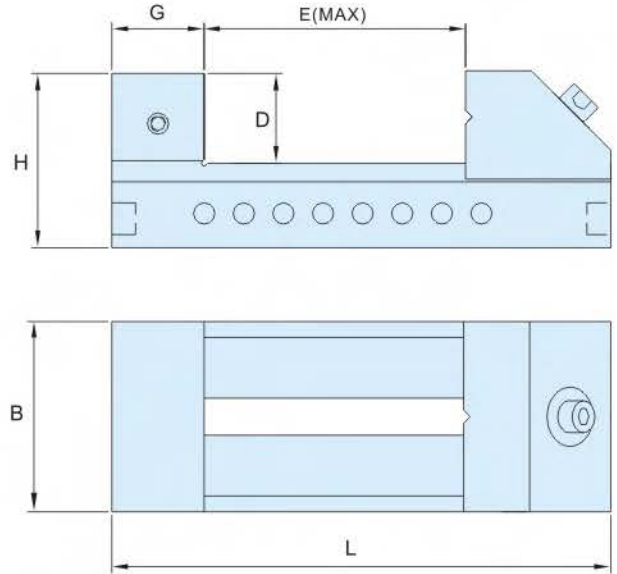
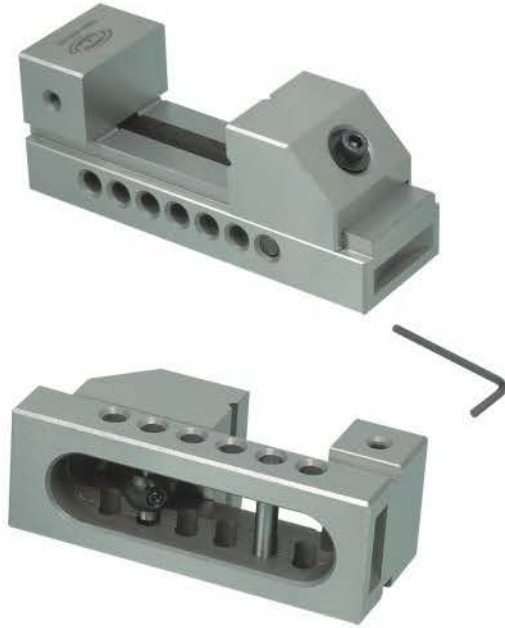
MODEL NO	L	A	B	C	D	E	N.W
PNH-PVE70	160	70	62	30	35	0-80	4.4kg
PNH-PVE90	210	90	80	40	38	0-120	8.7kg

Material: SK2

Hardness: HRC54° ~ 58°

Parallelism: ± 0.003mm / 100mm

Squareness: ± 0.005mm / 100mm



VA 型吊拉萬力

- 保持高度穩定的精密度
- 代替角尺來校正或測定工作物

VB 型吊拉萬力

- 不但具有VA型特點外，還可用吊拉器來調整滑座之前進與後退。

VA Type Hoist Vise

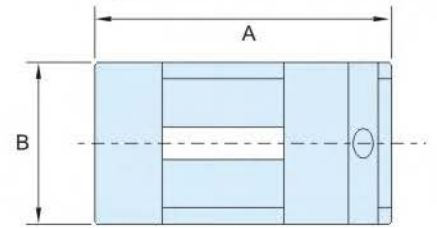
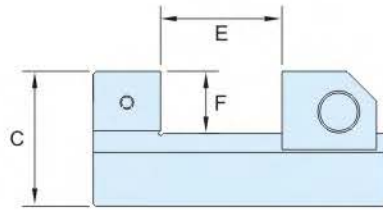
- Keeping stable precision
- Replacing square master to revise and measure working pieces

VB Type Hoist Vise

- With the feature of VA type, this tool maker vise can use the hoist to adjust the forward/backward movements of sliding seat.

unit:mm

MODEL NO	L	B	H	G	E	D	N.W.
PNH-VA20	149	47	57	30	74	29	1.8kg
PNH-VA25	169	62	62	30	89	34	2.8kg
PNH-VA30	189	72	66	35	99	34	4.1kg
PNH-VB10	65	25	30	20	20	10	0.27kg
PNH-VB15	100	36	40	20	40	20	0.65kg
PNH-VB20	149	47	57	30	74	29	1.7kg
PNH-VB25	169	62	62	30	89	34	2.8kg
PNH-VB30	189	72	66	35	99	34	4.0kg
PNH-VB35	225	88	85	40	120	45	7.2kg
PNH-VB40	230	98	85	40	125	45	8.8kg
PNH-VB50	287	125	100	50	157	50	14.5kg
PNH-VB60	330	150	100	50	200	50	19.4kg



Material: SKD11

Hardness: HRC58° ~ 62°

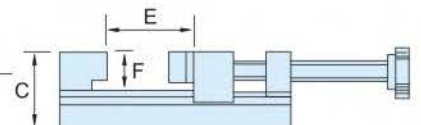
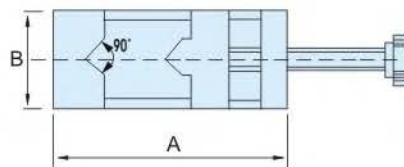
 Parallelism: $\pm 0.003\text{mm}$

 Squareness: $\pm 0.003\text{mm}$

- 採用特殊鋼材經生冷處理及精密研磨而成。
- 表面採用“拋光”研磨，光亮如鏡，不易刮傷、生鏽及變形，用於加工錳鋼刀，製造高精密成型夾具及放電加工。
- Adopting the special steel materials, this tool maker vise is built under the subzero treatment and fine grinding.
- Polishing surface is like mirror and is resistant for scrape, rust, and transformation. Suitable for the processing of tungsten steel cutting tools, the manufacture of high precision formed fixtures, and electric electrode processing.

unit:mm

MODEL NO	A	B	C	B	E	F	N.W.
PNH-HS15N	85	38	40	38	35	20	0.7kg
PNH-HS25N	110	60	50	60	50	23	1.6kg
PNH-HS30N	190	72	67	72	100	35	3.96kg



Material: SKD11

Hardness: HRC58° ~ 62°

 Parallelism: $\pm 0.003\text{mm}$

 Squareness: $\pm 0.003\text{mm}$

- 採用特殊鋼材經熱處理後及精密研磨而成。
- 表面採用“拋光”研磨，光亮如鏡，不易刮傷、生鏽及變形，用於加工錳鋼刀，製造高精密成型夾具及放電加工。
- 研磨圓柱形工件時更為方便精準。
- Adopting the special steel materials, this tool maker vise is built under the subzero treatment and fine grinding.
- Polishing surface is like mirror and is resistant for scrape, rust, and transformation. Suitable for the processing of tungsten steel cutting tools, the manufacture of high precision formed fixtures, and electric electrode processing. It is ideal for processing of column type working pieces.

unit:mm

MODEL NO	A	B	C	E	F	N.W.
PNH-HS25D	170	60	65	62	35	4.5kg

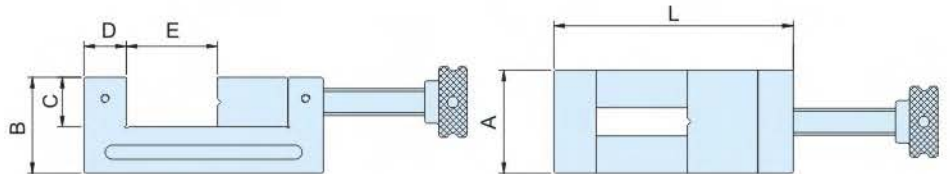


Material: SK2

Hardness: HRC54° ~ 58°

Parallelism: ± 0.003mm

Squareness: ± 0.005mm



- 適用於小工件的研磨及放電加工
- 代替角尺來校正或測定工作物

- Suitable for small working-piece grinding and electric electrode processing
- Replacing square master to revise and measure working pieces.

unit:mm

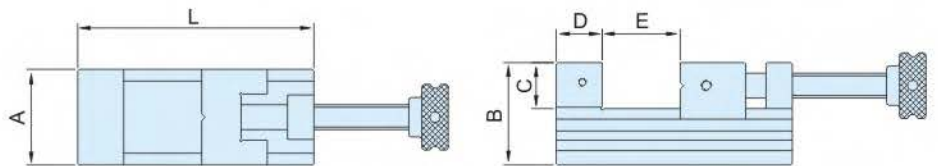
MODEL NO	L	A	B	C	D	E	螺 杆	N.W
PNH-VD20	154	47	53	24	25	0-55	8/5" -8 T/in	2.1kg
PNH-VD25	175	62	59	29	25	0-75	8/5" -8 T/in	3.3kg
PNH-VD30	180	72	69	29	30	0-70	4/3" -8 T/in	5kg
PNH-VD35	250	88	73	38	35	0-120	1" -6 T/in	8.3kg
PNH-VD40	250	98	73	38	35	0-120	1" -6 T/in	9.5kg

Material: SK2

Hardness: HRC54° ~ 58°

Parallelism: ± 0.003mm

Squareness: ± 0.005mm



- 滑座的“倒勾”型設計，有效消除滑座在強力作用下產生“上浮”弊端，使加工工件的精度得到更有效的保障。
- The specially-designed reverse hook eliminates effectively the floating of sliding seat under the strength influence, thus ensuring the precision of working pieces.

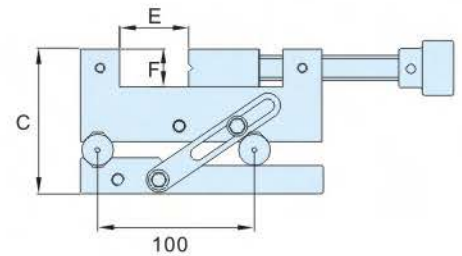
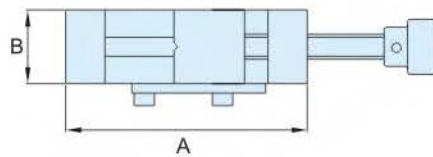
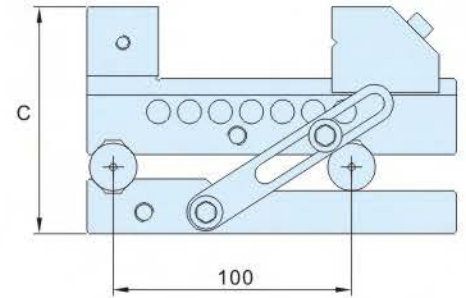
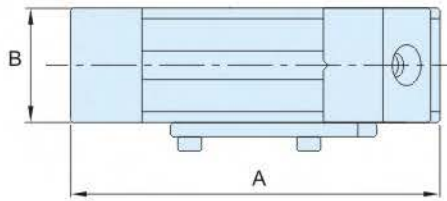
unit:mm

MODEL NO	L	A	B	C	D	E	螺 杆	N.W
PNH-VE20	140	48	55	25	25	0~75	8/5" -8 T/in	2.2kg
PNH-VE25	160	63	69	30	30	0~85	8/5" -8 T/in	4.2kg
PNH-VE30	180	73	78	35	35	0~95	4/3" -8 T/in	6.1kg
PNH-VE40	230	98	92	45	40	0~120	1" -6 T/in	11.5kg

Material: SK2

Hardness: HRC54°~58°

 Parallelism: $\pm 0.003\text{mm}$

 Squareness: $\pm 0.005\text{mm}$


- 角度可使用至 0~45 度。
- 正弦萬力本身除了具備工具萬力的優點外，並將正弦原理利用於萬力的應用範圍，可作為角度檢查與角度研削。
- With angle between 0° ~45°.
- In addition to features of tool maker vise, this sine vise employs the sine theory for the angle inspection and grinding.

unit:mm

MODEL NO		A	B	E	F	C	ANGLE	N.W.
PNH-SA20	吊拉型	155	48	80	30	95	0~45°	3.5kg
PNH-SA25		175	63	95	35	102		5.3kg
PNH-SA30		181	73	91	35	102		6.9kg
PNH-SB20	轉牙型	154	47	59	24	92		3.8kg
PNH-SB25		175	62	80	29	92		5.5kg
PNH-SB30		180	72	75	29	102		7.5kg

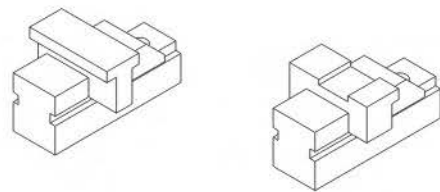
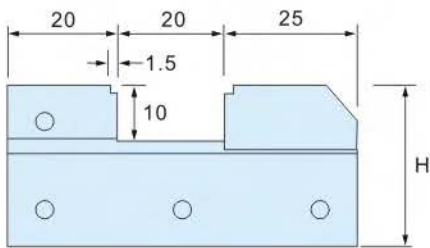
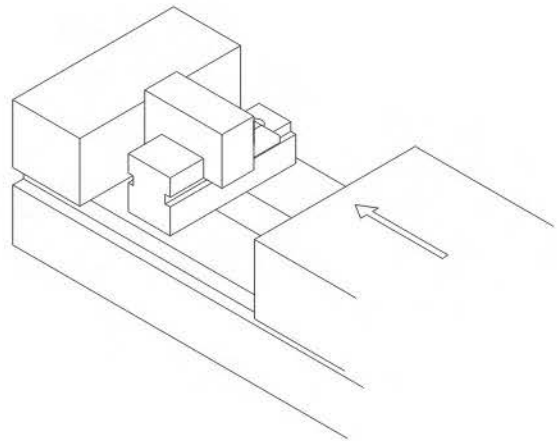
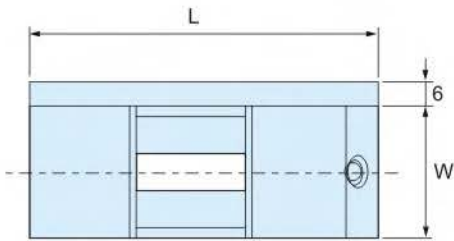


TAIS T-P CO., LTD.



不鏽鋼精密側片萬力
PRECISION VISE OF STAINLESS STEEL

Material: SUS440
Hardness: HRC50° ~ 56°
Parallelism: ± 0.003mm
Squareness: ± 0.003mm



- 產品採用不鏽鋼、耐腐蝕
- 適合當作電板夾具做垂直或水平方式放電加工使用
- This tool maker vise is stainless steel made, erosion-resistant
- Suitable for the use as electric plate fixture in vertical or horizontal electric discharge processing

unit:mm

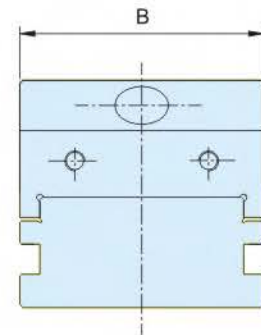
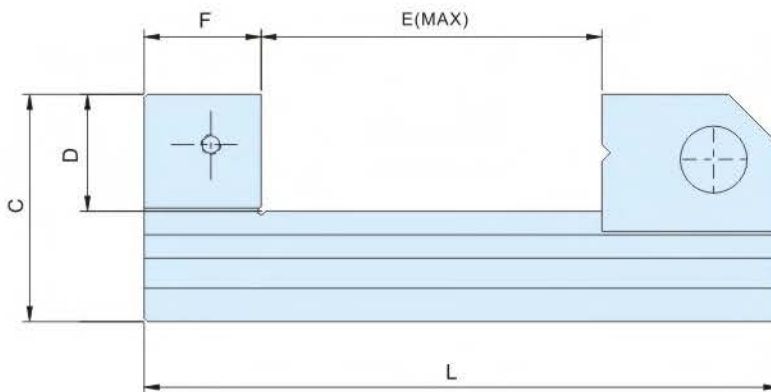
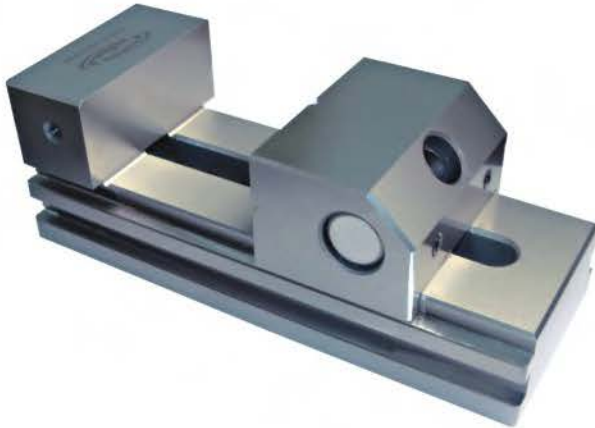
MODEL NO	L	W	H	側片	N.W.
PNH-S20	65	25	30	6	0.38kg

Material: SK2

Hardness: HRC54°~58°

Parallelism: $\pm 0.003\text{mm}$

Squareness: $\pm 0.005\text{mm}$



- VH系列精密萬力在製作中，其配件吊拉運用安裝彈簧設計，因此在使用時只要輕便壓下吊拉，就可使滑座直接前後滑動。
- In the manufacturing process of VH-series vise, spring is included in the fittings of the hauling which ease the utilization of this product as the sliding / spring saddle moves effortlessly with light pressure applied.

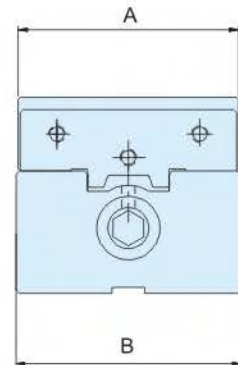
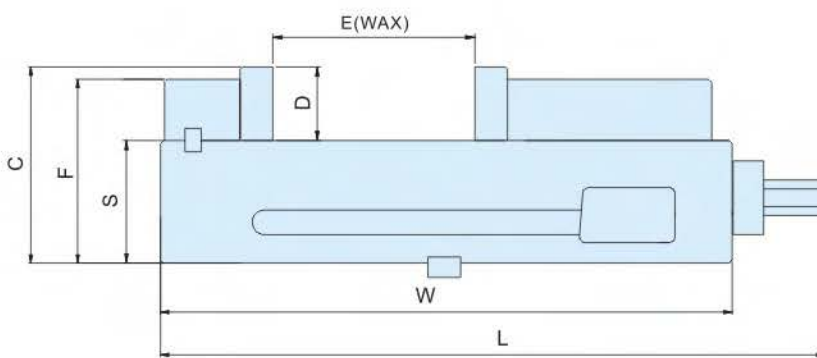
unit:mm

MODEL NO	L	B	C	F	D	E	N.W
PNH-VH15	105	36	48	20	20	45	0.76kg
PNH-VH20	150	48	53	25	25	75	1.59kg
PNH-VH25	176	63	59	30	30	95	2.79kg
PNH-VH30	190	73	68	35	35	100	4.21kg
PNH-VH40	245	98	90	45	45	135	9.02kg

Material: FCD / SKS93

Parallelism: 0.01mm / 100mm

Squareness: 0.015mm / 100mm

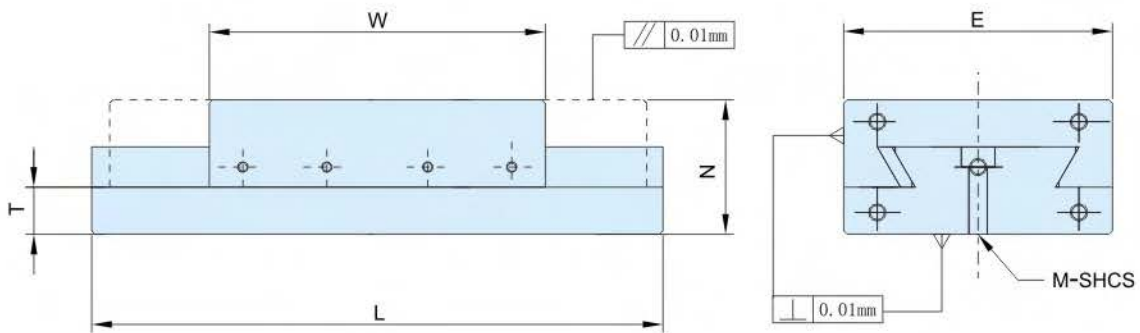


- 使用適合綜合加工機(M/C)、銑床加工中數台並列使用，並確保其各工件精度一致，還可以很快夾持各並列工件，並不需要每個工件一一校正，故在多種加工程序中，依然可確保其精度。
- Properties: suitable for comprehensive processor (M/C) milling machine tied for use in several machines, and ensure that each workpiece precision is consistent, can quickly clamping workpiece, need not all tied for each workpiece one correction, therefore, in many kinds of processing program, still can ensure its accuracy.

unit:mm

MODEL NO	A	B	W	C	D	S	F	E	L	N.W
PNH-AMV4	108	110	280	90	36	60	30	100	325	13.3kg
PNH-AMV6	152	155	370	114	46	74	40	140	428	27.7kg

Material: SUJ2
 Hardness: HRC56^o ~ 60^o
 Parallelism: ± 0.005mm
 Squareness: ± 0.005mm



unit:mm

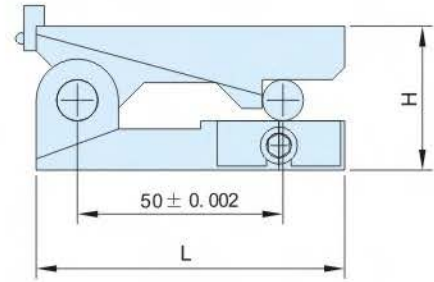
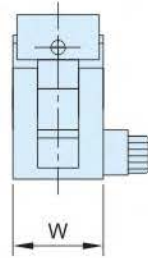
MODEL NO	L	E	W	N	T	SHCS	N.W.
JWHD50-120	120	50	80	40	14	M5-0.8	1.6kg
JWHD50-150	150	50	80	40	14	M5-0.8	1.8kg
JWHD50-200	200	50	80	40	14	M5-0.8	2.2kg
JWHD80-150	150	80	100	44	14	M6-1.0	3.2kg
JWHD80-200	200	80	100	44	16	M6-1.0	4.0kg
JWHD80-250	250	80	100	44	16	M6-1.0	4.5kg
JWHD80-300	300	80	100	44	16	M6-1.0	5.0kg
JWHD100-180	180	100	120	49	19	M6-1.0	5.2kg
JWHD100-200	200	100	120	49	19	M6-1.0	5.5kg
JWHD100-250	250	100	120	49	19	M6-1.0	6.3kg
JWHD100-300	300	100	120	49	19	M6-1.0	7.1kg

※ 以上特制品，需加工订制。

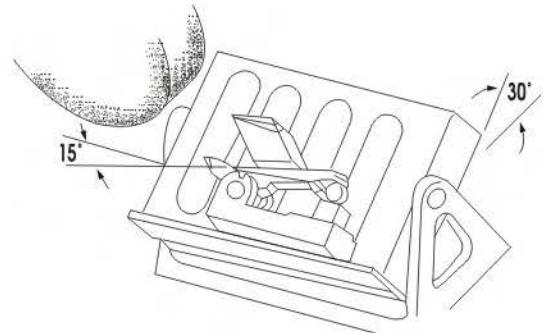
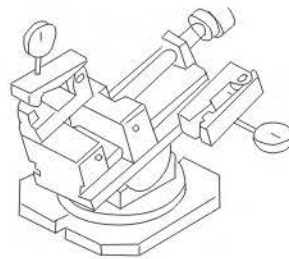
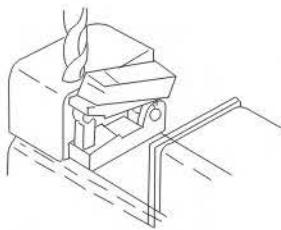
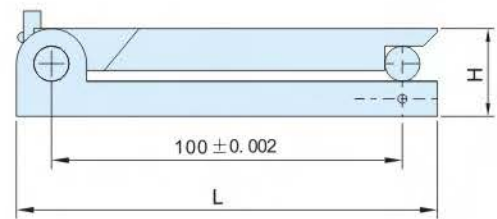
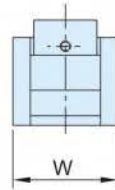
Material: SK2
 Hardness: HRC54°~58°
 Parallelism: $\pm 0.003\text{mm}$
 Squareness: $\pm 0.003\text{mm}$



PNH-MS50DX



PNH-MS100DX



- 磁性正弦規與萬力配合使用，適合磨床上做角度成型加工，尤其適合特小型工件的角度成型加工。
- 也可以用作角度的精確檢查和測量。兩整輪間的中心距離精度在 $\pm 0.002\text{mm}$ 內。
- In compliance with the use of tool maker vise, this magnet sine bar is suitable for angle forming processing in grinding machine, especially for extra-small type working pieces.
- Also ideal for angle inspection and measurement. The center distance precision between wheels is within $\pm 0.002\text{mm}$.

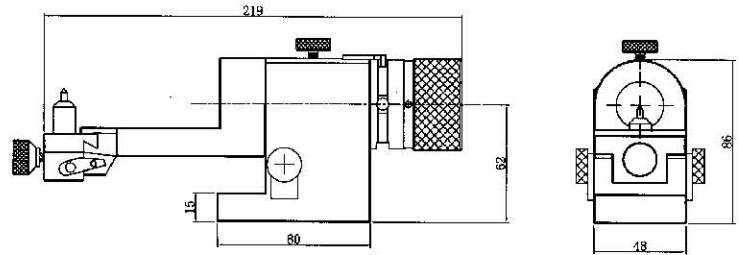
unit:mm

MODEL NO	L	W	H	ANGLE	N.W.
PNH-MS50DX	75	22	35	0°~45°	0.36kg
PNH-MS100DX	120	30	25	0°~45°	0.58kg



透視砂輪修整器 PNH-PKT50

VISUAL RADIUS ANGLE DRESSER



中心高.....62 毫米
 最大修整砂輪直徑.....200 毫米
 最大凸弧半徑.....10 毫米
 最大凹弧半徑.....25.4 毫米
 修整角度.....90°-0°-95°
 滑塊行程.....22 毫米

Center height.....62mm
 Max wheel diameter.....200mm
 Max convex radius.....10mm
 Max concave radius.....25.4mm
 Dressing angle.....90°-0°-95°
 Tangential travel.....22mm

PNH-PKT50 透視砂輪修整器主要用於平面磨床和萬能工具磨床，修整由直線和圓弧組成的各種截形砂輪。通過透視鏡可觀察到金剛筆尖和砂輪待修表面的接觸情況，可以容易地修整圓弧、直線，並達到理想的精準。

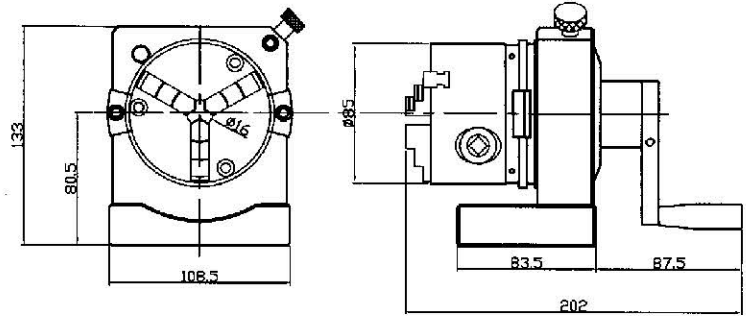
Model PNH-PKT50 Visual Universal Wheel Dresser Adaptable on Surface grinder and universal tool grinder for dressing grinding wheel into various cross sections of flat or curved shapes.

By "SIGHTING" the diamond point through the lens, radius and angles can easily be made perfectly tangent-Visually-Even with diamond Likewise radius can be blended together with most unbelievable accuracy.



三爪沖子成型器 PNH-PCJ

3-JAWS PUNCH FORMER PNH-PCJ



PNH-PCJ 沖子成型器為方便使用，特別加上三爪夾頭，可快速的將工件夾持使用。因三爪夾頭的累積公差夾持不同大小工件時會有差異，所以設計有水平及真圓的調整功能供使用者自行調整，所以本產品適合用於大批量的生產使用。

附有反爪配件可供較大外徑工件的夾持。

PNH-PCJ punch forming machine for the convenience of use, particularly with three jaw chuck, can be used to fast the workpiece clamping. Due to the accumulation of three jaw chuck tolerance workpiece clamping different size will have differences, so the design level and true round adjustment function for the user to adjust, so this product is suitable for mass production.

Attached the claw parts available for large diameter workpiece clamping.

三爪孔徑：16 毫米

最小夾持直徑：外徑 $\phi 2\text{mm}$ 、內徑 $\phi 24\text{mm}$

最大夾持直徑：外徑 $\phi 70\text{mm}$ ，內徑 $\phi 64\text{mm}$

Three jaw size: 16mm

Minimum clamping diameter: Outside diameter $\phi 2\text{mm}$ 、Inside diameter $\phi 24\text{mm}$

Maximum clamping diameter: Outside diameter $\phi 70\text{mm}$ 、Inside diameter $\phi 64\text{mm}$