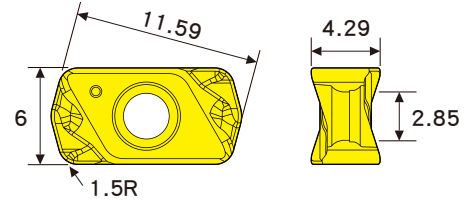
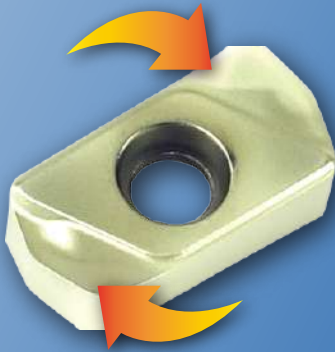




LNMX 鎢鋼高進給型銑刀片

LNMX- High Feed Carbide Milling Insert

刀片可雙面使用！ 總共可使用4個切削刃！



刀片 Insert	材質碼 Grade	刀片顏色 Color	應用材質 Cutting Material
LNMX0303-MG-	CM2332	紫紅色 Maroon	碳素鋼、合金鋼、不銹鋼。 Carbon Steel, Alloy Steel, Stainless Steel.
	CM6033	白金色 Platinum	專劑 3 字頭不銹鋼。 Stainless Steel (300 Series).

刀片雙面使用，降低客戶加工成本！

應用材質：碳素鋼，合金鋼，3字頭不銹鋼
For carbon steel, alloy steel, stainless steel.

切 削 實 例

CUT EXAMPLES



中碳鋼S45C加工

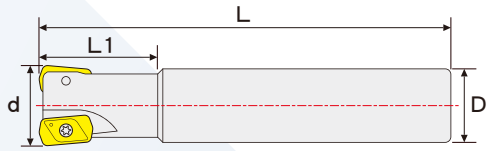
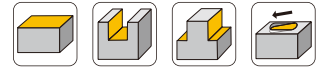
更高的進給速度！ *More Feed!*
更高的切削性能！ *More Performance!*



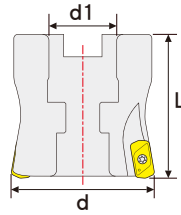
刀具特性 / Features:

- ◆ 切深最高可達到1mm。
Productivity- High feed rates with axial depth of cut up to 1mm.
- ◆ 高進給銑削增加切屑排出量，提高生產力！
High Feed Milling- Increase chip removal capability and productivity!
- ◆ 高剛性的正角刀片，適合較低的切削力和高效率銑削。
Strong positive insert for lower cutting force and efficient milling.
- ◆ 提供多種切削工具：銑刀桿、銑刀頭、面銑刀盤。
Available in multiple mounting configurations: end mill, thread shank mill and face mill type.
- ◆ 可雙面使用，共有4個切削刃，用於經濟型高效銑削，降低客戶加工成本。
Cost savings- double-sided deigned with total 4 cutting edges for cost-effective milling.
- ◆ 刀片內接圓R角1.5mm，提供客戶編程設定。
Diameter of Inscribed Circle is 1.5mm, provide customer programming.

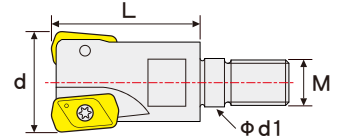
刀桿尺寸規格表/ SIZE- CUTTING TOOLS:



ELN 銑刀桿/ Type 1



FLN 銑刀盤/ Type 2



HLN 銑刀頭/ Type 3

ELN 銑刀桿 / Type 1								
型號 Model Number	Dimensions (mm)				刃數 Teeth	刀片 Insert	Screw 	Wrench
	d	D	L	L1				
ELN03-02016-100L	16	16	100	30	2	LNMX0303..	TS2535	ETF07
ELN03-03020-150L	20	20	150	50	3			
ELN03-04020-130L	20	20	130	50	4			
ELN03-04025-150L	25	25	150	60	4			
ELN03-06032-150L	32	32	150	70	6			

FLN 銑刀盤 / Type 2								
型號 Model Number	Dimensions (mm)				刃數 Teeth	刀片 Insert	Screw 	Wrench
	d	d1	L	—				
FLN03-05050-2200	50	22.00	50	—	5	LNMX0303..	TS2535	ETF07
FLN03-08050-2200	50	22.00	50	—	8			

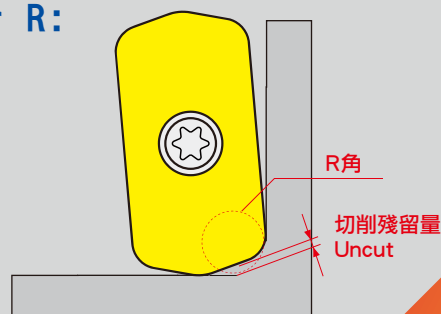
HLN 銑刀頭 / Type 3								
型號 Model Number	Dimensions (mm)				刃數 Teeth	刀片 Insert	Screw 	Wrench
	d	d1	L	M				
HLN03-02017	17	8.5	26	8	2	LNMX0303..	TS2535	ETF07
HLN03-03021	21	10.5	32	10	3			
HLN03-04026	26	12.5	38	12	4			
HLN03-04032	32	17.0	41	16	4			

切削條件表/ Cutting Condition:

加工材質 Material	碳素鋼 Carbon Steels	合金鋼 Alloy Steels	不銹鋼 Stainless Steels	鑄鐵 Cast Iron	鈦合金 Titanium Alloys
工件料號 Material Code	S35C,S45C,S50C	SCM,SKT,SKD	SUS304	FC,FCD	TiAl6V4
硬度 Hardness	HRC<20	HRC20~45	—	HRC<30	HRC<30
切削速度 Vc (m/min)	100~220	100~150	70~150	100~220	40~80
每刃進給量 fz (mm)	0.4~1.6	0.3~1.0	0.3~0.8	0.4~1.6	0.3~0.8
加工深度 Ap (mm)	0.4~0.9	0.4~0.6	0.4~0.7	0.4~0.9	0.4~0.6

R角編程設定/ Programming- Corner R:

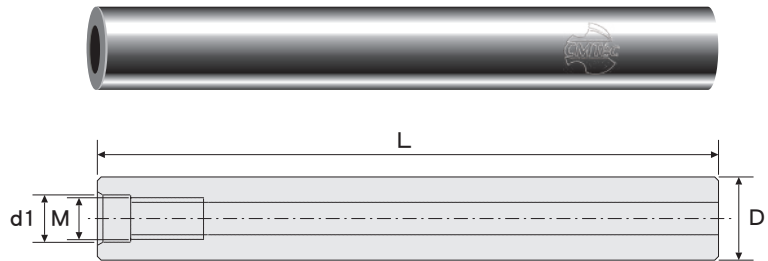
LNMX0303 銑刀片 - R角 (mm)	
內接圓 R角 Input R	切削殘留量 Uncut
1.5mm	0.5mm



鎢鋼抗震刀桿

CARBIDE ANTI-VIBRATION HOLDER

· **LCL000-000L**



螺紋M Thread	柄徑 D	全長 L	d1	訂購編號 Order No.
M4 × 0.7	8	60	4.5	LCL008-060L
M4 × 0.7	8	100	4.5	LCL008-100L
M4 × 0.7	8	120	4.5	LCL008-120L
M5 × 0.8	10	75	5.5	LCL010-075L
M5 × 0.8	10	100	5.5	LCL010-100L
M5 × 0.8	10	150	5.5	LCL010-150L
M6 × 1.0	12	75	6.5	LCL012-075L
M6 × 1.0	12	100	6.5	LCL012-100L
M6 × 1.0	12	150	6.5	LCL012-150L
M6 × 1.0	12	200	6.5	LCL012-200L
M8 × 1.25	16	100	8.5	LCL016-100L
M8 × 1.25	16	150	8.5	LCL016-150L
M8 × 1.25	16	200	8.5	LCL016-200L
M8 × 1.25	16	250	8.5	LCL016-250L
M10 × 1.5	20	100	10.5	LCL020-100L
M10 × 1.5	20	150	10.5	LCL020-150L
M10 × 1.5	20	200	10.5	LCL020-200L
M10 × 1.5	20	250	10.5	LCL020-250L
M10 × 1.5	20	300	10.5	LCL020-300L
M12 × 1.75	25	100	12.5	LCL025-100L
M12 × 1.75	25	150	12.5	LCL025-150L
M12 × 1.75	25	200	12.5	LCL025-200L
M12 × 1.75	25	250	12.5	LCL025-250L
M12 × 1.75	25	300	12.5	LCL025-300L
M16 × 2.0	32	100	17.0	LCL032-100L
M16 × 2.0	32	150	17.0	LCL032-150L
M16 × 2.0	32	200	17.0	LCL032-200L
M16 × 2.0	32	250	17.0	LCL032-250L
M16 × 2.0	32	300	17.0	LCL032-300L

S2220

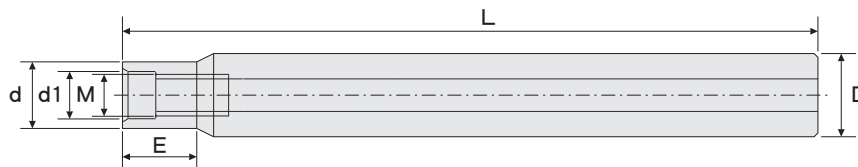
S220 Carbide End Mills

S220 鎢鋼銑刀系列

鎢鋼抗震刀桿- 頸型

CARBIDE ANTI-VIBRATION HOLDER- NECK

· LCN000-000L-000E



MG

螺紋M Thread	刃徑 d	d1	有效長 E	全長 L	柄徑 D	訂購編號 Order No.
M6 × 1.0	11.7	6.5	30	75	12	LCN011-075L-030E
M6 × 1.0	11.7	6.5	40	100	12	LCN011-100L-040E
M6 × 1.0	11.7	6.5	50	150	12	LCN011-150L-050E
M8 × 1.25	15.7	8.5	40	100	16	LCN015-100L-040E
M8 × 1.25	15.7	8.5	50	150	16	LCN015-150L-050E
M10 × 1.5	19.5	10.5	40	100	20	LCN019-100L-040E
M10 × 1.5	19.5	10.5	50	150	20	LCN019-150L-050E
M10 × 1.5	19.5	10.5	60	200	20	LCN019-200L-060E
M12 × 1.75	24.5	12.5	40	100	25	LCN024-100L-040E
M12 × 1.75	24.5	12.5	50	150	25	LCN024-150L-050E
M12 × 1.75	24.5	12.5	60	200	25	LCN024-200L-060E
M12 × 1.75	24.5	12.5	80	250	25	LCN024-250L-080E
M16 × 2.0	31.5	17.0	40	100	32	LCN031-100L-040E
M16 × 2.0	31.5	17.0	50	150	32	LCN031-150L-050E
M16 × 2.0	31.5	17.0	60	200	32	LCN031-200L-060E
M16 × 2.0	31.5	17.0	80	250	32	LCN031-250L-080E

S220

S220 Carbide End Mills

S220鎢鋼銑刀系列