

Quality ●
Diversification ●
Specialty ●

USONITC

USONITC

We reserve the right to modify design without prior notice

USONIC INTERNATIONAL CO., LTD.

No.5, Aly. 21, Ln. 130, Shenzhou Rd., Shengang Dist., Taichung City 42942, Taiwan (R.O.C.)
TEL: +886-4-25273737 FAX: +886-4-25204800 E-MAIL: usonic.sales@msa.hinet.net

**Professional
DUST COLLECTORS**

Oil mist collectors & total solution service



graphic design / DAY YEU TEL: 886-4-2525089 E-mail: vian@usonic.com.tw
C00853-17002-020



www.usonictw.com



USONIC INTERNATIONAL CO., LTD.

COMPANY PROFILE

Our company is specialized in manufacturing dust collectors for industry use.
All our products are CE certified
Our LS series are CE and ATEX explosion proof certified.

We are providing you a large range of dust collectors to collect any kind of dust for any type of industry
Including :

- Metal processing (graphite, titanium, machine tool,...)
- Food processing (tea powder, floor,...)
- Chemistry industry
- Painting industry
- Car industry
- Laser industry
- Woodworking industry
- Pharmaceutical industry

Please contact us if your industry is not listed above or for any other inquiries, we can surely adapt and customize our machine for your good use to have a safe and clean working environment.

If you are not too sure on which type of dust collector is suitable for you, contact us and one of our specialist will help you to find the best choice depending on the dust type, size, capacity,...

Thank you for choosing USONIC and trusting our company!

POWERFUL COLLECTING DUST



INDEX

- 3 Application
- 5 Features
- 6 3RD Generation of Dust Collector
- 11 2ND Generation of Dust Collector
- 13 U Series
- 14 S Series for Plasma / Laser cutting
- 15 High Pressure Dust Collector For Sanding
- 17 1ST Generation of Dust Collector
- 19 Oil Mist Collectors
- 20 Air Cleaning / Downdraft Table
- 21 High Pressure Blowers
- 22 Dust Collector Accessories



EFFICIENCY QUALITY

Application

WOODWORKING



SANDING



PLASMA CUTTING



MACHINING CENTER



GRINDING



Application

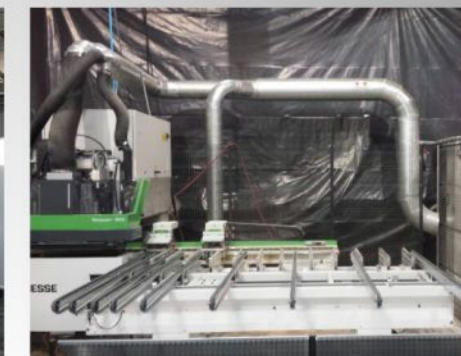
Woodworking · Pharmaceutical · Fiber glass · Ceramic/Stone · Food Processing · CNC Machining · Fabrication · Laser Cutting · Paper Trimming/Packaging and more · Plasma · Sanding and more ·



Graphite Cutting



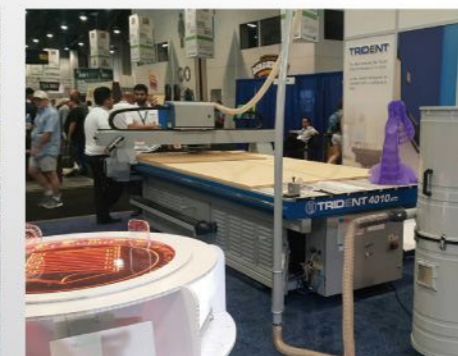
Packing Machine



Woodworking



Car Bodyshop



Router Woodworking



Vertical Machining Center



Grinding Machine



CNC machining center



Grinding



Lathe



Plasma/Laser cutting



Woodworking Machine

Features of 3RD Generation of Dust Collector

Automatic Filter Cleaning for Easy Maintenance

Automatic pulse Jet Cleaning System with an inside measure sensor to delect when the filters need to be clean.

Anti Static Treated Filters to minimize the chance of Fire & Explosion

Mobile base Collection Tank with Quick-Release hooks and see-through window for Simple Dust Disposal.

Low Maintenance Cost

The blower is located at pure-air side of the collector unit. All dust are filtered first before entering through the motor and fan blower section. It helps prolong the motor usage life but not losing suction power.

Clean Workplace

Totally enclosed design featuring fine micron filter bags to minimize fine dust sending back to the airborne.

Built-in Alarm to signal the-Fire occurred inside of the machine

Fire Control by built-in Fire Sprinkler or optional Fire Extinguisher

The fire control system helps minimize the damage caused by possible fire hazard occurred inside of the machine.

ULTIMATE DRY DUST CONTROL SOLUTION FOR WIDE RANGE OF APPLICATIONS

Featuring in built-in Fire Control system to minimize the damage caused by the dust explosion hazard.

Energy Saving

The CFM performance of this 5HP LS-500E is comparable to 7.5HP on the traditional dust collector. Its high-performance blower and sophisticated aerodynamic casing design featuring backward curved impeller to make this collector consuming less energy even when the dust filter unit is operating at full power.

Low Sound Rating. Ideal for Indoor operation

The impeller fan is located inside the collector and away from the open dust inlet to reduce the Sound rating. It features backward curving blades for smooth and quiet operation.



Standard: Fire sprinkler.



Optional: Fire Extinguisher



Standard: Pressure-releaser device.

3RD Generation of Dust Collector



Bag Filters of Cartridges



Optional



Fire extinguisher



5x100mm Fitting



HEPA Filter



Velocity & Airflow Reader



LS-500E Bag Filters

LS-500EC Cartridges

Specs / PN	LS-500E	LS-500EC
Inlet size	250mm (10")	250mm (10")
Motor	3.7KW (5HP)	3.7KW (5HP)
Air volume	75CMM / 2,649CFM@60HZ	88CMM / 3,108CFM@60HZ
Filter type	Bag filter	Cartridge
Filter material	L-PET, 5 micron or 0.5micron	Polyester, 10 micron or polyester + teflon 0.5micron
Number of filters	20pcs	6pcs
Filter area / filter size	8m ²	28.8m ²
Static pressure	2,300Pa	2,300Pa
Filter cleaning	Pulse Jet system	Pulse Jet system
Residual dust content	<0.1mg/m ³	<0.1mg/m ³
Dust tank volume	0.23m ³ / 60.75gal	0.23m ³ / 60.75gal
Compressed air required	6~8kg / cm ² / 85~113psi	6~8kg / cm ² / 85~113psi
Noise rate	MAX. 82dB (A)	MAX. 82dB (A)
Net / gross weight	270kg / 335kg (594lb/737lb)	300kg / 365kg (660lb/803lb)
Packing dimensions	167 x 76 x 218 (cm)	167 x 76 x 218 (cm)

3RD Generation of Dust Collector

3RD Generation of Dust Collector



LS-500AD Bag Filters

LS-500ACD Cartridges

LS-500ED2 Bag Filters

LS-500ECD2 Cartridges

Specs / PN	LS-500AD	LS-500ACD
Inlet size	250mm (10")	250mm (10")
Motor	3.7KW (5HP)	3.7KW (5HP)
Air volume	75CMM / 2,649CFM@60HZ	88CMM / 3,108CFM@60HZ
Filter type	Bag filter	Cartridge
Filter material	L-PET, 5 micron or 0.5micron	Polyester, 10 micron or polyester + teflon 0.5micron
Number of filters	20pcs	6pcs
Filter area / filter size	8m ²	28.8m ²
Static pressure	2,300Pa	2,300Pa
Filter cleaning	Pulse Jet system	Pulse Jet system
Residual dust content	<0.1mg/m ³	<0.1mg/m ³
Dust tank volume	0.23m ³ / 60.75gal	0.23m ³ / 60.75gal
Compressed air required	6~8kg / cm ² / 85~113psi	6~8kg / cm ² / 85~113psi
Noise rate	MAX. 76dB (A)	MAX. 76dB (A)
Net / gross weight	450kg / 540kg (990lb/1188lb)	460kg / 550kg (1012lb/1210lb)
Packing dimensions	188 x 82 x 218 (cm)	188 x 82 x 218 (cm)

Specs / PN	LS-500ED2	LS-500ECD2
Inlet size	250mm (10")	250mm (10")
Motor	3.7KW(5HP)	3.7KW(5HP)
Air volume	92CMM / 3,250CFM@60HZ	92CMM / 3,250CFM@60HZ
Filter type	Bag filter	Cartridge
Filter material	L-PET, 5 micron or 0.5micron	Polyester, 10 micron or polyester + teflon 0.5micron
Number of filters	36pcs	10pcs
Filter area / filter size	14.4m ²	48m ²
Static pressure	2,667Pa	2,667Pa
Filter cleaning	Pulse Jet system	Pulse Jet system
Residual dust content	<0.1mg/m ³	<0.1mg/m ³
Dust tank volume	0.23m ³ X 2 / 60.75gal X 2	0.23m ³ X 2 / 60.75gal X 2
Compressed air required	6~8kg / cm ² / 85~113psi	6~8kg / cm ² / 85~113psi
Noise rate	MAX. 82dB (A)	MAX. 82dB (A)
Net / gross weight	450kg / 540kg (990lb/1,188lb)	465kg / 575kg (1,023lb/1,265lb)
Packing dimensions	261 X 76 X 218 (cm)	261 X 76 X 218 (cm)

3RD Generation of Dust Collector

3RD Generation of Dust Collector



LS-750E Bag Filters

LS-750EC Cartridges

LS-1000E Bag Filters

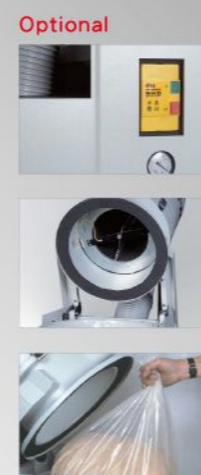
LS-1000EC Cartridges

Specs / PN	LS-750E	LS-750EC
Inlet size	300mm (12")	300mm (12")
Motor	5.6KW (7.5HP)	5.6KW (7.5HP)
Air volume	120CMM / 4,237CFM@60HZ	120CMM / 4,237CFM@60HZ
Filter type	Bag filter	Cartridge
Filter material	L-PET, 5 micron or 0.5micron	Polyester, 10 micron or polyester + teflon 0.5micron
Number of filters	36pcs	12pcs
Filter area / filter size	14.4m ²	43.2m ²
Static pressure	2,700Pa	2,700Pa
Filter cleaning	Pulse Jet system	Pulse Jet system
Residual dust content	<0.1mg/m ³	<0.1mg/m ³
Dust tank dimensions / volume	0.47m ³ / 124gal	0.47m ³ / 124gal
Compressed air required	6~8kg / cm ² / 85~113psi	6~8kg / cm ² / 85~113psi
Noise rate	MAX. 83dB (A)	MAX. 83dB (A)
Net / gross weight	660kg / 790kg (1320lb/1738lb)	680kg / 810kg (1496lb/1782lb)
Packing dimensions	226 x 123 x 225 (cm)	226 x 123 x 225 (cm)

Specs / PN	LS-1000E	LS-1000EC
Inlet size	300mm (12")	300mm (12")
Motor	7.5KW (10HP)	7.5KW (10HP)
Air volume	155CMM / 5,473CFM@60HZ	155CMM / 5,473CFM@60HZ
Filter type	Bag filter	Cartridge
Filter material	L-PET, 5 micron or 0.5micron	Polyester, 10 micron or polyester + teflon 0.5micron
Number of filters	48pcs	15pcs
Filter area / filter size	19.2m ²	72m ²
Static pressure	2,800Pa	2,800Pa
Filter cleaning	Pulse Jet system	Pulse Jet system
Residual dust content	<0.1mg/m ³	<0.1mg/m ³
Dust tank volume	0.32m ³ x 2 / 84gal x 2	0.32m ³ x 2 / 84gal x 2
Compressed air required	6~8kg / cm ² / 85~113psi	6~8kg / cm ² / 85~113psi
Noise rate	MAX. 83dB (A)	MAX. 83dB (A)
Net / gross weight	690kg / 850kg (1518lb/1870lb)	710kg / 870kg (1562lb/1914lb)
Packing dimensions	258 x 123 x 226 (cm)	258 x 123 x 226 (cm)

2ND Generation of Dust Collector

2ND Generation of Dust Collector



Sparks box



Removable tank

DC-103A

Specs / PN	DC-103A
Motor	3 HP (2.25KW)
Air Volume(measured at the arm)	30CMM (1,070CFM)@60HZ
Filter	Standard: 10micron Polyester cartridge (Optional:0.5 micron)
Spark Box(optional)	Mesh filter
Filtering Area	2.65m ²
Bag Volume	0.125m ³
Inlet Diameter	127 mm(5")
Flex Arm	2m or 3m
Sound Rating @ 1M	80 dB (A)
Static Pressure	2,000 Pa
Packing Dimension	133 X 69 X 166 cm
Net / Gross Weight	170 / 270 Kg (374lb/594lb)

DC-103H

Specs / PN	DC-103H
Motor	3 HP (2.25KW)
Air Volume	6.5CMM (230CFM)@60HZ
Filter	Standard: 10micron Polyester cartridge (Optional:0.5 micron)
Filtering Area	2.65m ²
Bag Volume	0.125m ³
Inlet Diameter	59.3mm(2-1/3")
Sound Rating @ 1M	80 dB (A)
Max Pressure	27.5KPa
Packing Dimension	133 x 69 x 166cm
Net / Gross Weight	115 / 165 Kg (253lb/363lb)

DC-102 / DC-103 / DC-105

Specs / PN	DC-102	DC-103	DC-105
Motor	2 HP (1.5KW)	3 HP (2.25KW)	5 HP(3.75KW)
Air Volume	26CMM (918CFM)@60HZ	39CMM (1,377CFM)@60HZ	57CMM (2,013CFM)@60HZ
Filter	Standard: 10micron Polyester cartridge (Optional:0.5 micron)	Standard: 10micron Polyester cartridge (Optional:0.5 micron)	Standard: 10micron Polyester cartridge (Optional:0.5 micron)
Filtering Area	2.5m ²	2.65m ²	2.94m ²
Bag Volume	0.095m ³	0.125m ³	0.182m ³
Inlet Diameter	100 mm(4")	127mm(5")	153 mm(6")
Sound Rating @ 1M	70 dB (A)	80 dB (A)	90 dB (A)
Static Pressure	1,800 Pa	2,000 Pa	2,667 Pa
Packing Dimension	124 x 67 x 151cm	133 x 69 x 166cm	147 X 72 X 187 cm
Net / Gross Weight	110 / 160 Kg (242lb/352lb)	115 / 165 Kg (253lb/363lb)	150 / 220 Kg (330lb/484lb)

DC-105S

Specs / PN	DC-105S
Motor	5 HP(3.75KW)
Air Volume	57CMM (2,013CFM)@60HZ
Filter	Standard: 10micron Polyester cartridge (Optional:0.5 micron)
Filtering Area	2.94m ²
Bag Volume	0.182m ³
Inlet Diameter	153 mm(6")
Sound Rating @ 1M	84 dB (A)
Static Pressure	2,667 Pa
Packing Dimension	147 X 72 X 187 cm
Net / Gross Weight	160 / 230 Kg (352lb/506lb)

U Series

S Series for Plasma / Laser cutting



Pre-filter



Filter for Plasma/Laser



U-750AC/U-1000AC

Specs / PN	U-750AC	U-1000AC
Inlet size	300mm (12")	300mm (12")
Motor	7.5HP (5.6KW)	10HP (7.5KW)
Air volume	118CMM (4,168CFM)@60HZ	135CMM (4,867CFM)@60HZ
Filter type	Cartridge	Cartridge
Filter material	Polyester	Polyester
Number of filters	4	4
Filter area / filter size	15.2m ²	15.2m ²
Static pressure	2,300Pa	2,300Pa
Filter cleaning	Pulse Jet System	Pulse Jet System
Residual dust content	<0.1mg/m ³	<0.1mg/m ³
Dust tank volume	0.215m ³	0.215m ³
Compressed air required	6~8kg	6~8kg
Noise rate	82 dB (A)	82 dB (A)
Net / gross weight	450 / 570 Kg	450 / 570 Kg
Packing dimensions	104(L) X 110(W) X 240(H) cm	104(L) X 110(W) X 240(H) cm

S-1000R

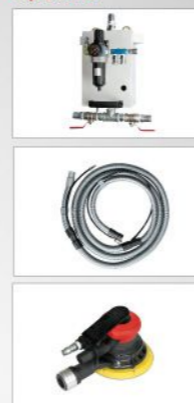
Specs / PN	S-1000R
Inlet size	350mm (14")
Motor	10HP (7.5KW)
Air volume	180CMM (6,355CFM)@60HZ
Filter type	Cartridge
Filter material	Cellulose
Number of filters	6
Filter area / filter size	120m ²
Static pressure	3,000Pa
Filter cleaning	Pulse Jet System
Residual dust content	<0.1mg/m ³
Dust tank volume	0.084m ³ X 2
Compressed air required	6~8kg
Noise rate	72 dB (A)
Net / gross weight	1,120 / 1,270 Kg
Packing dimensions	289(L) X 120(W) X 235(H) cm

High Pressure Dust Collector For Sanding

Our UH models have been specially designed by our engineers to vacuum all the dust from all your sanding works. No matters which material you are sanding (car parts, wood, metal, hardwood floor, drywall,...) the UH dust collectors are the perfect solution for a dust free sanding!



Optional



UH-100/UH-150

Specs / PN	UH-100	UH-150
Inlet size	125mm (5")	125mm (5")
Motor	10HP	15HP
Air volume	12CMM@50HZ / 14CMM@60HZ	30CMM@50HZ / 33CMM@60HZ
Filter type	0.5micron filter bag	0.5micron filter bag
Filter material	L-PET, Electric Conductive	L-PET, Electric Conductive
Number of filters	20pcs	20pcs
Filter area	8m ²	8m ²
Max pressure	27.5kPa	27.5kPa
Filter cleaning	Pulse Jet System	Pulse Jet System
Residual dust content	<0.1mg/m ³	<0.1mg/m ³
Dust tank volume	0.23m ³	0.42m ³
Compressed air required	6~8 kg / cm ²	6~8 kg / cm ²
Noise rate	MAX. 76dB (A)	MAX. 76dB (A)
Net / gross weight	420kg / 520kg	720kg / 840kg
Packing dimensions	188 x 82 x 218 (cm)	185 x 129 x 218 (cm)

High Pressure Dust Collector For Sanding

Our UH models have been specially designed by our engineers to vacuum all the dust from all your sanding works. No matters which material you are sanding (car parts, wood, metal, hardwood floor, drywall,...) the UH dust collectors are the perfect solution for a dust free sanding!



Optional



UH-DC1

Specs / PN	UH-DC1
Inlet size	1 x 32mm (1-1/4")
Motor	1HP
Air volume	3CMM@60HZ
Filter type	10micron Cartridge + HEPA Filter
Filter material	Polyester + Teflon
Number of filters	2pcs
Max pressure	14kPa
Residual dust content	<0.1mg/m ³
Dust tank volume	0.042m ³
Noise rate	MAX. 75dB (A)
Net / gross weight	66kg / 130kg
Packing dimensions	69 x 69 x 135 (cm)



Optional



UH-030

Specs / PN	UH-030
Inlet size	2 x 32mm (2x1-1/4")
Motor	3HP
Air volume	6CMM@60HZ
Filter type	0.5micron filter cartridge
Filter material	Polyester + Teflon
Number of filters	2pcs
Filter area	1.5m ²
Max pressure	25kPa
Filter cleaning	Pulse Jet System
Residual dust content	<0.1mg/m ³
Dust tank volume	0.08m ³
Compressed air required	6~8 kg / cm ²
Noise rate	MAX. 68dB (A)
Net / gross weight	135kg / 200kg
Packing dimensions	139 x 80 x 116 (cm)

1ST Generation of Dust Collector

1ST Generation of Dust Collector



UFO-40

UFO-102A / UFO-103A

UFO-102B / UFO-103B

UFO-90

UFO-105D / UFO-104D

UFO-104H1 / UFO-105H1

Specs / PN	UFO-40
Motor	1 HP / 0.75kw
Air Volume	19 / 670
(CMM/CFM)	535 X 560mm
Bag size (dia. x depth)	100mm X 1
Inlet Diameter	130 mmH2O
Static Pressure	44 X 38 X 41cm
Packing Size	20 / 21 Kg
Net / Gross Weight	

Specs / PN	UFO-102A	UFO-103A
Motor	3HP(2.2kw)	5HP(3.75kw)
Inlet Diameter	155 mm x 1	180 mm x 1
Air Volume	55 CMM	78 CMM
Static Pressure	235 mmH2O	268 mmH2O
Packing Size (Crate)	115 x 66 x 72 cm	120 x 76 x 79 cm
Net Weight	68 Kg	102 Kg
Gross Weight	78 Kg	150 Kg

Specs / PN	UFO-102B	UFO-103B
Motor	3HP/1PH,240V UL	5HP/1PH,220V UL
	3HP/3PH,220V/440V	5HP/3PH,220V/440V
Air Volume	(Prewired 220V)	(Prewired 220V)
Bag size (dia. x depth)	55 CMM	78 CMM
Connection Inlet	495 x 787 mm(4)	610 x 915mm(4)
Diameter	153 mm Inlet, 100mm x(3)Y Fitting	178 mm Inlet, 100mm x (4) Fitting
Static Pressure	235 mmH2O	264 mmH2O
Packing Size (Crate)	123 x 58 x 58 cm	145 x 77 x 83 cm
Net / Gross Weight	78 / 82 Kg	118 / 166 Kg
Optional Canister Filter	1 Micron@Height:66cm x 2	N/A

Specs / PN	UFO-90
Motor	1 HP / 0.75kw
Air Volume	696 CFM
Bag size (dia. x depth)	360 X 590mm (2)
Inlet Diameter	100mm X 1
Static Pressure	130 mmH2O
Packing Size	76 X 38 X 46 cm
Net / Gross Weight	28 / 31 Kg
Optional Canister Filter	1 Micron @ 660mm (H)

Specs / PN	UFO-105D	UFO-104D
Motor	7.5HP(5.7KW)3ph	10 HP(3.75KW),3ph
Air Volume	108 CMM	121 CMM
Bag size (dia. x depth)	495 x 1220mm Top(4)	673 x 1626mm Top(4)
Inlet Diameter	495 x 1220mm Bottom(4)	673 x 1626mm Bottom(4)
Static Pressure	312 mmH2O	356 mmH2O
Assembly Size	148 x 127 x 310 cm	165 x 160 x 310 cm
Packing Size(2)	155 x 132 x 89 cm	170 x 176 x 87 cm
Net / Gross Weight	309 / 364 Kg	332 / 490 Kg
Optional Canister Filter	1 Micron @ Height:102 cm x 4	N/A

Specs / PN	UFO-104H1	UFO-105H1
Motor	10HP(7.5KW)3ph	7.5 HP(5.7KW) 3ph
Air Volume	181 CMM	114 CMM
Bag size (dia. x depth)	350 x 2000 mm Top(8) 660 x 1220 mm Bottom(2)	350 x 2000 mm Top(8) 660 x 1020 mm Bottom(2)
Connection Inlet	242 mm Inlet	220 mm Inlet
Static Pressure	464 mmH2O	388 mmH2O
Packing Size	225 x 101 x 77 cm	211 x 101 x 77 cm
Net / Gross Weight	273 / 332 Kg	250 / 309 Kg
Optional Canister Filter	1Micron@ Height:122 cm x 8	1Micron@ Height:122 cm x 8



UFO-101

UFO-101D

UFO-102T / UFO-103T

UFO-103H

UFO-104H2 / UFO-105H2

UFO-1100H

Specs / PN	UFO-101
Motor	2HP(1.5KW)
UFO-101M	1PH,110V With Plug
UFO-101UL	1PH,240V UL
UFO-1013	3PH / 220V / 440V (Prewired 220V)
Air Volume (CMM/CFM)	37 / 1,305
Bag Capacity	0.148M ³
Bag size (dia. x depth)	495 x 790 mm(2)
Inlet Diameter	130 mm/2x100mm Y Fitting
Static Pressure	200 mmH2O
Packing Size	92 x 58 x 58 cm
Net / Gross Weight	64 / 68 Kg
Optional Canister Filter	1 Micron @Height:66 cm

Specs / PN	UFO-101D
Motor	2HP(1.5KW)
UFO-101M	1PH,110V With Plug
UFO-101UL	1PH,240V UL
UFO-1013	3PH / 220V / 440V (Prewired 220V)
Air Volume (CMM/CFM)	37 / 1312
Bag size (dia. x depth)	495 x 790 mm (2)
Inlet Diameter	130 mm / 2x100mm Y Fitting
Static Pressure	200 mmH2O
Packing Size	92 x 58 x 58 cm
Net / Gross Weight	64 / 68 Kg
Optional Canister Filter	1 Micron @Height:66 cm x1

Specs / PN	UFO-102T	UFO-103T
Motor	3HP(2.25KW)	5 HP(3.75KW),3ph
Air Volume	55 CMM	78 CMM
Bag size (dia. x depth)	495 x 787 mm(4)	610 x 915mm(4)
Connection Inlet	153 mm Inlet, 100mm x(3) Y Fitting	178 mm Inlet, 100mm x (4) Y Fitting
Diameter	235 mmH2O	264 mmH2O
Static Pressure	107 x 72 x 64 cm (1) 98kgs	
Packing Size(2)	148 x 51 x 5 cm (1) 12kgs	145 x 77 x 83 cm
Net / Gross Weight	100 / 109 Kg	118 / 166 Kg
Optional Canister Filter	1Micron @Height: 66 cm x 1	N/A

Specs / PN	UFO-103H
Motor	5 HP / 3ph (3.75kw)
Air Volume	88.5 CMM
Bag size (dia. x depth)	495 x 1220 mm Top(3) 483 x 788 mm Bottom(3)
Inlet Diameter	178mm / 4x100mm Y Fitting
Static Pressure	268 mmH2O
Packing Size	153 x 77 x 66 cm
Net / Gross Weight	120 / 173 Kg
Optional Canister Filter	1 Micron @Height:102 cm x 3

Specs / PN	UFO-104H2	UFO-105H2
Motor	10HP(3.75KW)3ph	7.5 HP(5.7KW) 3ph
Air Volume	188 CMM	122 CMM
Bag size (dia. x depth)	350 x 2000 mm Top(16) 660 x 1220 mm Bottom(4)	350 x 2000 mm Top(16) 660 x 1020 mm Bottom(2)
Connection Inlet Diameter	242 mm Inlet,	254 mm Inlet,
Static Pressure	483 mmH2O	407 mmH2O
Packing Size	225 x 101 x 113 cm	211 x 101 x 113 cm
Net / Gross Weight	364 / 460 Kg	340 / 432 Kg
Optional Canister Filter	1 Micron@ Height:122 cm x 8	1 Micron@ Height:102 cm x 8

Specs / PN	UFO-105H1
Motor	10HP(3.75KW)3ph
Air Volume	300 CMM
Upper Bag size	128 x 1500 mm
Inlet Diameter	350 mm
Static Pressure	2300pa
Packing Size	260 x 115 x 110 cm
Net / Gross Weight	280 / 380 Kg
Optional Canister Filter	N/A
Filter	

OIL MIST COLLECTOR

Air Cleaning System / Smell Filtering / Downdraft Table

Oil Mist Collectors & Air Cleaner

Oil mist collection and purification efficiency reaches over **99.9%**

Your No.1 Choice in Energy Saving & Carbon Reduction



SPECIFICATIONS

MODEL	UNIT	UOM-001R	UOM-002R	UOM-003R
Power source	V	3ph 220/380	3ph 220/380	3ph 220/380
Motor	kW/HP	0.37/0.5	0.75/1	1.2/1.6
Airflow (50Hz/60Hz)	m3/h	660/960	960/1200	1260/1560
Noise level	dB(A)	Max65	Max68	Max72
Weight	Kg	33.7	40.7	49.5
Air suction Inlet	mm	Ø125	Ø 150	Ø 150
Rotation	R.P.M	2850/3500	2850/3500	2850/3500
Cutting Area	m3	1-4	4-6	6/8



SR-6

SR-6	
Inlet size	126 X 125 CM
Motor	10 HP
Air volume	400CMM
Filter type a	Active carbon filter
filter type b	High efficient active carbon filter
number of filters	6 SET
Static pressure	2000pa
Note	Only for smell filtration, Not for dust.
Noise rate	80db
Net / gross weight	1800 / 1950kg
Packing dimensions	310cm(L) X 210cm(W) X 220cm(H)



DT-5

DT-5	
Motor	5 HP, 3ph(3.75KW)
Air Volume	21CMM (742CFM)
Table Diameter	1.18 x 1.02 M
Filter	Standard: 10micron Polyester cartidge (Optional:0.5 micron)
Filtering Area	18m ²
Dust Tank Volume	0.054 x 2
Sound Rating @ 1M	80 dB (A)
Static Pressure	2667 Pa
Dimension	195 X 108 X 962 cm



UY700D-BLDC

54" Aluminum Blades BLDC with Direct Drive Motor

US700D-BLDC

54" 7 Magnesium Alloy Blades BLDC with Direct Drive Motor

UY700D-BLDC / US700D-BLDC	
External frame	FRP Housing
Blade size	50" -PA66+40%GF
Nos. of Blade	7 Nylon Blades. 7 Magnesium Alloy
Motor	1HP Isolation Grade F
Voltage	200V~240V 50/60Hz
R.P.M.	470. 430 rpm
Noise	70~75dB
Air Extracted Volume	36000. 40000m ³ / hr
Watt	800. 900W
Size	145×145×68cm
Weight	60.66kg

High Pressure Blowers

Dust Collector Accessories



UHB-306



UHB-606



UHB-706



UHB-806



UHB-906



UHB-1506

UHB-306

	UHB-306		UHB-306A	
Voltage, Hz	50HZ IP54, 220/380V, 3 Phases	60HZ IP54, 220/380V, 3 Phases	50HZ IP54, 110/220V, Single Phase	60HZ IP54, 110/220V, Single Phase
Max power(KW)	0.8	0.9	0.8	0.9
Rated Current(A)	3.5(220V)/1.9(380V)	4.2(220V)/2.2(380V)	10.5(110V)/4.8(220V)	12(110V)/6.0(220V)
Max Blowing Pressure(mmAq)	2000	2050	1600	2100
Max Vacuum Pressure(mmAq)	1500	1800	1400	1800
Max Blowing Wind-Force(m3/min)	2.4	2.65	2.4	2.65
Noise Value(dB)	68	69	68	69
In/Out Orifice(Inch)	1-1/2			
Weight(KG)	17			
Size(LxWxH)	273 x 286 x 300 mm			

UHB-606/706

	UHB-606		UHB-706	
Voltage, Hz	50HZ IP54, 220/380V, 3 Phases	60HZ IP54, 220/380V, 3 Phases	50HZ IP54, 220/380V, 3 Phases	60HZ IP54, 220/380V, 3 Phases
Max power(KW)	2.2	2.6	3.7	4
Rated Current(A)	8(220V)/5(380V)	4.6(220V)/2.4(380V)	12(220V)/7(380V)	14(220V)/8.0(380V)
Max Blowing Pressure(mmAq)	3400	4350	3400	4350
Max Vacuum Pressure(mmAq)	2500	3000	2500	3000
Max Blowing Wind-Force(m3/min)	6	6.5	6.5	7
Noise Value(dB)	75	80	75	80
In/Out Orifice(Inch)	2			
Weight(KG)	35		36	
Size(LxWxH)	354 x 384 x 390 mm		354 x 384 x 390 mm	

UHB-806/906

	UHB-806		UHB-906	
Voltage, Hz	50HZ IP54, 220/380V, 3 Phases	60HZ IP54, 220/380V, 3 Phases	50HZ IP54, 220/380V, 3 Phases	60HZ IP54, 220/380V, 3 Phases
Max power(KW)	5.5	6	7.5	8
Rated Current(A)	20(220V)/11.5(380V)	25(220V)/15(380V)	25(220V)/15(380V)	30(220V)/19(380V)
Max Blowing Pressure(mmAq)	3500	4750	3500	4750
Max Vacuum Pressure(mmAq)	2750	3550	2750	3550
Max Blowing Wind-Force(m3/min)	9.5	11	10	11.5
Noise Value(dB)	76	86	76	86
In/Out Orifice(Inch)	2-1/2			
Weight(KG)	76			
Size(LxWxH)	490 x 463 x 500 mm			

UHB-1506

	UHB-1506	
Voltage, Hz	50HZ IP54, 220/380V, 3 Phases	60HZ IP54, 220/380V, 3 Phases
Max power(KW)	11	12
Rated Current(A)	37(220V)/21.5(380V)	26(220V)/15(380V)
Max Blowing Pressure(mmAq)	3600	4800
Max Vacuum Pressure(mmAq)	2700	3550
Max Blowing Wind-Force(m3/min)	14.2	17.1
Noise Value(dB)	82	87
In/Out Orifice(Inch)	4	
Weight(KG)	123	
Size(LxWxH)	730 x 552 x 575 mm	

YW0056
Joint
100mm X 107mm



YW1017
4" Elbow Fitting



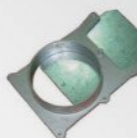
YW1058
2-1/4"x1-1/2" Reducer Splice
YW1059
2-1/4"x2-1/2" Reducer Splice
YW1060
2-1/2"x1-1/4" Reducer Splice



YW1068
4" x 10" Rectangle Vacuum Head



YW1084 5" Alu. Blast Gate
YW1085 6" Alu. Blast Gate



YW1005
Dust port
355 X 355 X 100mm (dai.)
YW1001
Dust port
210 X 210mm X 100mm(dai.)



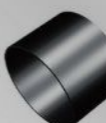
YW1022 2-1/2" to 1-1/2" Reducer Fitting
YW1023 2-3/4" to 2-3/8"
YW1024 3" to 2"
YW1025 3" to 2-1/2"
YW1026 4" to 2-1/2"
YW1011 4" to 3"
YW1027 5" to 4"



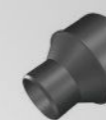
YW1061
4" Oblique Fitting



YW1069
3" x 3" Connector Coupling
YW1070
4" x 4" Connector Coupling



YW1093 4" X 2-1/2" Reducer
YW1094 4" X 2-1/4" Reducer
YW1095 4" X 2" Reducer



YW1007
4" Plastic Blast Gate
YW1008
5" Plastic Blast Gate
YW1034
2-1/2x2" Plastic Blast Gate



YW1036
4" Thread Splice (left)
YW1041
3" Quick Coupler



YW1062
4" Rectangle Vacuum Head



YW1074
4" Vacuum Head
W 41cm X H 32.5cm X D 25cm



YW1101
45° Elbow Connector



YW1013 4" T-Fitting
YW1037 2-1/2" T-Fitting
YW1048 5" T-Fitting
YW1051 2-1/2" Limpid T-Fitting
YW1053 2" T-Fitting



YW1042
4" x 2-1/2" Quick Coupler
YW1043
4" x 3" Quick Coupler
YW1044
5" x 4" Quick Coupler



YW1064
6" x 4" 2 Ways Fitting



YW1076
Y-Fitting
4" X 2, 2-1/2" X 1



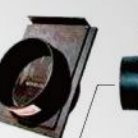
YW1106
4" Floor Vacuum Head



YW1015
4" Y-Fitting
YW1049
5" Y-Fitting



YW1057
4" Sides Blast Gate



YW1067
2-1/4" Barrelhead
YW1033
21" Barrelhead



YW1083
Vacuum Head
W 34.5cm*H 18.5cm* D 16.5cm



YW1108
2-1/2" Conical Vacuum Head

