

**ACTWELL**

# LUBRICATION EQUIPMENT

*PROFESSIONAL  
EXCELLENT QUALITY  
ENVIRONMENTAL PROTECTION*



# CONTENTS

## ACTWELL

Company Profile

2



Air-operated Grease Lubricator 3



Air-operated Oil Lubricator 17



Air-operated Grease Pump 23



Air-operated Oil Pump 25



Hand-operated Grease Lubricator 28



Hand-operated Oil Lubricator 31



Parts and Accessories 32

## *Company Profile*

Actwell Machinery Co., Ltd. was established in 1983 and has been committing to Lubrication Pumps development ever since. 'ACTWELL' products are used to dispense, fill and transfer grease, motor oil and gear oil for vehicle, ship, aircraft and machine as lubrication, maintenance and repair tools; as well as on oil field, construction and industrial area for various applications.

## *Certification*

We have obtained **ISO 9001:2015** and **CE** quality management system certification. All products have strictly quality control, are reliable and guaranteed.





# S81 / T81 / V81

## Air-operated Grease Lubricator 氣動黃油機

Fixed type for standard 180 kgs drum  
固定式-180公斤油桶用

### Features :

- 20 feet two wire braided High Pressure Grease Hose, allows access to hard to reach applications.
- 40731 High Pressure Grease Gun with 40721 360° swivel for one-handed operation.
- 81905 Drum Cover prevents contamination.
- 81921 Follower Plate prevents air pockets & helps priming grease.
- Pumping and suction are two separate systems to avoid contamination of fluid.
- Applicable grease range NLGI #00 - 2.

We have optional 81922 Follower Plate with rubber rim -- wipes drum clean. Standard, included in set is 81921.

### 特點：

- (1) 配備20呎高壓油管。
- (2) 高壓油槍搭配萬向接頭，方便、可單手操作。
- (3) 附桶蓋可避免油脂受到汙染。
- (4) 附壓板有助於出油更順暢。
- (5) 幫浦作動為兩獨立系統，以免空氣汙染油脂。
- (6) 適用NLGI#00-02號黃油。

※另有81922膠邊壓板可供選購，可更有效利用油脂。  
標準配備為81921無膠邊壓板。

Model No. 型號	S81	T81	V81
	S80 Grease pump ratio : 45:1 S80 黃油幫浦， 壓力比：45:1	T80 Grease pump ratio : 50:1 T80 黃油幫浦， 壓力比：50:1	V80 Grease pump ratio : 60:1 V80 黃油幫浦， 壓力比：60:1
<b>Cosisting of 產品標準配備</b>	<b>40054</b> 3/8" Air Connector 3/8" 空氣接頭 <b>40053</b> 1/4" Fluid Coupler 1/4" 接頭 <b>40797-20</b> 1/4" Grease Hose 20 feet 1/4" 高壓油管20呎 <b>40731</b> Grease Gun 黃油槍 <b>81905</b> Drum Cover 桶蓋 <b>81921</b> Follower Plate 壓板		



Model No. 型號	Container Size 容量	Pressure Ratio 壓力比	Recommended Operating Pressure 推薦使用壓力	Delivery Rate 輸出量	Shipping N.W. 淨重	Shipping G.W. 毛重	Shipping Measurement 材積
<b>S81</b>	180 kgs	45:1	5 - 9 kg/cm <sup>2</sup>	1.25 kgs/min ●■	22.2 kgs	24.0 kgs	2.4 cuft
<b>T81</b>		50:1	5 - 8 kg/cm <sup>2</sup>	1.16 kgs/min ●■			
<b>V81</b>		60:1	5 - 7 kg/cm <sup>2</sup>	0.96 kgs/min ●■			

● At 6 kg/cm<sup>2</sup> ■ Using NLGI #2 grease at room temperature 25 °C

# S811 / T811 / V811

## Air-operated Grease Lubricator 氣動黃油機

Fixed type for standard 180 kgs drum  
固定式-180公斤油桶用

### Features :

- 20 feet two wire braided High Pressure Grease Hose, allows access to hard to reach applications.
- 40731 High Pressure Grease Gun with 40721 360° swivel for one-handed operation.
- Pumping and suction are two separate systems to avoid contamination of fluid.
- Applicable grease range NLGI #00 - 2.

### 特點 :

- (1) 配備20呎高壓油管。
- (2) 高壓油槍搭配萬向接頭，方便、可單手操作。
- (3) 幫浦作動為兩獨立系統，以免空氣污染油脂。
- (4) 適用NLGI#00-02號黃油。



Model No. 型號	S811	T811	V811
Cosisting of 產品標準配備	S80 Grease pump ratio : 45:1 S80 黃油幫浦， 壓力比：45:1	T80 Grease pump ratio : 50:1 T80 黃油幫浦， 壓力比：50:1	V80 Grease pump ratio : 60:1 V80 黃油幫浦， 壓力比：60:1
	<b>40054</b> 3/8" Air Connector 3/8" 空氣接頭 <b>40053</b> 1/4" Fluid Coupler 1/4" 接頭 <b>40797-20</b> 1/4" Grease Hose 20 feet 1/4" 高壓油管20呎 <b>40731</b> Grease Gun 黃油槍		

Model No. 型號	Container Size 容量	Pressure Ratio 壓力比	Recommended Operating Pressure 推薦使用壓力	Delivery Rate 輸出量	Shipping N.W. 淨重	Shipping G.W. 毛重	Shipping Measurement 材積
S811	180 kgs	45:1	5 - 9 kg/cm <sup>2</sup>	1.25 kgs/min ●■	12.7 kgs	14.1 kgs	1.5 cuft
T811		50:1	5 - 8 kg/cm <sup>2</sup>	1.16 kgs/min ●■			
V811		60:1	5 - 7 kg/cm <sup>2</sup>	0.96 kgs/min ●■			

● At 6 kg/cm<sup>2</sup> ■ Using NLGI #2 grease at room temperature 25 °C



# S61 / T61 / V61

## Air-operated Grease Lubricator

### 氣動黃油機

Fixed type for standard 55 kgs drum  
固定式-55公斤油桶用

#### Features :

- 20 feet two wire braided High Pressure Grease Hose, allows access to hard to reach applications.
- 40731 High Pressure Grease Gun with 40721 360° swivel for one-handed operation.
- 61903 Drum Cover prevents contamination.
- 61921 Follower Plate prevents air pockets & helps priming grease.
- Pumping and suction are two separate systems to avoid contamination of fluid.
- Applicable grease range NLGI #00 - 2.

We have optional 61922 Follower Plate with rubber rim -- wipes drum clean. Standard, included in set is 61921.

#### 特點 :

- (1) 配備20呎高壓油管。
- (2) 高壓油槍搭配萬向接頭，方便、可單手操作。
- (3) 附桶蓋可避免油脂受到汙染。
- (4) 附壓板有助於出油更順暢。
- (5) 幫浦作動為兩獨立系統，以免空氣污染油脂。
- (6) 適用NLGI#00-02號黃油。

※另有61922膠邊壓板可供選購，可更有效利用油脂。  
標準配備為61921無膠邊壓板。

Model No. 型號	S61	T61	V61
	S60 Grease pump ratio : 45:1 S60 黃油幫浦，壓力比：45:1	T60 Grease pump ratio : 50:1 T60 黃油幫浦，壓力比：50:1	V60 Grease pump ratio : 60:1 V60 黃油幫浦，壓力比：60:1
<b>Cosisting of 產品標準配備</b>	<b>40054</b> 3/8" Air Connector 3/8" 空氣接頭 <b>40053</b> 1/4" Fluid Coupler 1/4" 接頭 <b>40797-20</b> 1/4" Grease Hose 20 feet 1/4" 高壓油管20呎 <b>40731</b> Grease Gun 黃油槍 <b>61903</b> Drum Cover 桶蓋 <b>61921</b> Follower Plate 壓板		



#### Option 選購

**61922**  
Follower Plate  
- with rubber rim  
膠邊壓板

Model No. 型號	Container Size 容量	Pressure Ratio 壓力比	Recommended Operating Pressure 推薦使用壓力	Delivery Rate 輸出量	Shipping N.W. 淨重	Shipping G.W. 毛重	Shipping Measurement 材積
<b>S61</b>	55 kgs	45:1	5 - 9 kg/cm <sup>2</sup>	1.25 kgs/min ●■	15.9 kgs	17.3 kgs	1.8 cuft
<b>T61</b>		50:1	5 - 8 kg/cm <sup>2</sup>	1.16 kgs/min ●■			
<b>V61</b>		60:1	5 - 7 kg/cm <sup>2</sup>	0.96 kgs/min ●■			

● At 6 kg/cm<sup>2</sup> ■ Using NLGI #2 grease at room temperature 25 °C

# S611 / T611 / V611

## Air-operated Grease Lubricator 氣動黃油機

Fixed type for standard 55 kgs drum  
固定式-55公斤油桶用

### Features :

- 20 feet two wire braided High Pressure Grease Hose, allows access to hard to reach applications.
- 40731 High Pressure Grease Gun with 40721 360° swivel for one-handed operation.
- Pumping and suction are two separate systems to avoid contamination of fluid.
- Applicable grease range NLGI #00 - 2.

### 特點 :

- (1) 配備20呎高壓油管。
- (2) 高壓油槍搭配萬向接頭，方便、可單手操作。
- (3) 幫浦作動為兩獨立系統，以免空氣污染油脂。
- (4) 適用NLGI#00-02號黃油。



Model No. 型號	S611	T611	V611
Cosisting of 產品標準配備	S60 Grease pump ratio : 45:1 S60 黃油幫浦， 壓力比：45:1	T60 Grease pump ratio : 50:1 T60 黃油幫浦， 壓力比：50:1	V60 Grease pump ratio : 60:1 V60 黃油幫浦， 壓力比：60:1
	<b>40054</b> 3/8" Air Connector 3/8" 空氣接頭	<b>40053</b> 1/4" Fluid Coupler 1/4" 接頭	<b>40797-20</b> 1/4" Grease Hose 20 feet 1/4" 高壓油管20呎

Model No. 型號	Container Size 容量	Pressure Ratio 壓力比	Recommended Operating Pressure 推薦使用壓力	Delivery Rate 輸出量	Shipping N.W. 淨重	Shipping G.W. 毛重	Shipping Measurement 材積
<b>S611</b>	55 kgs	45:1	5 - 9 kg/cm <sup>2</sup>	1.25 kgs/min ●■	12.0 kgs	13.1 kgs	1.3 cuft
<b>T611</b>		50:1	5 - 8 kg/cm <sup>2</sup>	1.16 kgs/min ●■			
<b>V611</b>		60:1	5 - 7 kg/cm <sup>2</sup>	0.96 kgs/min ●■			

● At 6 kg/cm<sup>2</sup> ■ Using NLGI #2 grease at room temperature 25 °C



# S62 / T62 / V62

## Air-operated Grease Lubricator 氣動黃油機

Mobile type for standard 55 kgs drum  
移動式-55公斤油桶用

### Features :

- 10 feet two wire braided High Pressure Grease Hose, allows access to hard to reach applications.
- 40731 High Pressure Grease Gun with 40721 360° swivel for one-handed operation.
- 61903 Drum Cover prevents contamination.
- 61921 Follower Plate prevents air pockets & helps priming grease.
- 62911 Base with 4 casters, allows greasing unit easily moved to applications.
- Pumping and suction are two separate systems to avoid contamination of fluid.
- Applicable grease range NLGI #00 - 2.

We have optional 61922 Follower Plate with rubber rim -- wipes drum clean. Standard, included in set is 61921.

### 特點：

- (1) 配備20呎高壓油管。
- (2) 高壓油槍搭配萬向接頭，方便、可單手操作。
- (3) 附桶蓋可避免油脂受到汙染。
- (4) 附壓板有助於出油更順暢。
- (5) 四輪底座，方便移動。
- (6) 幫浦作動為兩獨立系統，以免空氣污染油脂。
- (7) 適用NLGI#00-02號黃油。

※另有61922膠邊壓板可供選購，可更有效利用油脂。  
標準配備為61921無膠邊壓板。

Model No. 型號	S62	T62	V62
	S60 Grease pump ratio : 45:1 S60 黃油幫浦， 壓力比：45:1	T60 Grease pump ratio : 50:1 T60 黃油幫浦， 壓力比：50:1	V60 Grease pump ratio : 60:1 V60 黃油幫浦， 壓力比：60:1
Cosisting of 產品標準配備	<b>40054</b> 3/8" Air Connector 3/8" 空氣接頭 <b>40053</b> 1/4" Fluid Coupler 1/4" 接頭 <b>40797-10</b> 1/4" Grease Hose 10 feet 1/4" 高壓油管10呎 <b>40731</b> Grease Gun 黃油槍 <b>61903</b> Drum Cover 桶蓋 <b>61921</b> Follower Plate 壓板 <b>62911</b> Base Assembly 底座		



### Option 選購

**61922**  
Follower Plate  
- with rubber rim  
膠邊壓板

Model No. 型號	Container Size 容量	Pressure Ratio 壓力比	Recommended Operating Pressure 推薦使用壓力	Delivery Rate 輸出量	Shipping N.W. 淨重	Shipping G.W. 毛重	Shipping Measurement 材積
<b>S62</b>	55 kgs	45:1	4 - 9 kg/cm <sup>2</sup>	1.40 kgs/min ●■	23.0 kgs	25.6 kgs	3.1 cuft
<b>T62</b>		50:1	4 - 8 kg/cm <sup>2</sup>	1.23 kgs/min ●■			
<b>V62</b>		60:1	4 - 7 kg/cm <sup>2</sup>	0.99 kgs/min ●■			

● At 6 kg/cm<sup>2</sup> ■ Using NLGI #2 grease at room temperature 25 °C



# S63 / T63 / V63

## Air-operated Grease Lubricator 氣動黃油機

Mobile type for standard 55 kgs drum  
移動式-55公斤油桶用

### Features :

- 10 feet two wire braided High Pressure Grease Hose, allows access to hard to reach applications.
- 40731 High Pressure Grease Gun with 40721 360° swivel for one-handed operation.
- 61903 Drum Cover prevents contamination.
- 61921 Follower Plate prevents air pockets & helps priming grease.
- 63913 Base with 2 wheels & 2 casters, allows greasing unit easily moved to applications.
- 63926 Handle allows moving greasing unit easily.
- Pumping and suction are two separate systems to avoid contamination of fluid.
- Applicable grease range NLGI #00 - 2.

We have optional 61922 Follower Plate with rubber rim - wipes drum clean. Standard, included in set is 61921.

### 特點：

- (1) 配備10呎高壓油管。
- (2) 高壓油槍搭配萬向接頭，方便、可單手操作。
- (3) 附桶蓋可避免油脂受到汙染。
- (4) 附壓板有助於出油更順暢。
- (5) 大輪手推車，適合於不平地面使用。
- (6) 幫浦作動為兩獨立系統，以免空氣污染油脂。
- (7) 適用NLGI#00-02號黃油。

※另有61922膠邊壓板可選購，可更有效利用油脂。  
標準配備為61921無膠邊壓板。



Option 選購

**61922**  
Follower Plate  
- with rubber rim  
膠邊壓板

Model No. 型號	S63	T63	V63
	S60 Grease pump ratio : 45:1 S60 黃油幫浦，壓力比：45:1	T60 Grease pump ratio : 50:1 T60 黃油幫浦，壓力比：50:1	V60 Grease pump ratio : 60:1 V60 黃油幫浦，壓力比：60:1
Cosisting of 產品標準配備	40054 3/8" Air Connector 3/8" 空氣接頭 40053 1/4" Fluid Coupler 1/4" 接頭 40797-10 1/4" Grease Hose 10 feet 1/4" 高壓油管10呎 40731 Grease Gun 黃油槍 61903 Drum Cover 桶蓋 61921 Follower Plate 壓板 63913 Base Assembly 底座 63926 Handle Assembly 扶手		

Model No. 型號	Container Size 容量	Pressure Ratio 壓力比	Recommended Operating Pressure 推薦使用壓力	Delivery Rate 輸出量	Shipping N.W. 淨重	Shipping G.W. 毛重	Shipping Measurement 材積
S63	55 kgs	45:1	4 - 9 kg/cm <sup>2</sup>	1.40 kgs/min ●■	29.6 kgs	33.3 kgs	5.9 cuft
T63		50:1	4 - 8 kg/cm <sup>2</sup>	1.23 kgs/min ●■			
V63		60:1	4 - 7 kg/cm <sup>2</sup>	0.99 kgs/min ●■			

● At 6 kg/cm<sup>2</sup> ■ Using NLGI #2 grease at room temperature 25 °C



# S67 / T67 / V67

## Air-operated Grease Lubricator 氣動黃油機

Mobile type for standard 55 kgs drum  
移動式-55公斤油桶用

### Features :

- 10 feet two wire braided High Pressure Grease Hose, allows access to hard to reach applications.
- 40731 High Pressure Grease Gun with 40721 360° swivel for one-handed operation.
- 61903 Drum Cover prevents contamination.
- 61921 Follower Plate prevents air pockets & helps priming grease.
- 67913 Band-Type Dolly with 4 casters, allows greasing unit easily moved to applications.
- Pumping and suction are two separate systems to avoid contamination of fluid.
- Applicable grease range NLGI #00 - 2.

We have optional 61922 Follower Plate with rubber rim -- wipes drum clean. Standard, included in set is 61921.

### 特點 :

- (1) 配備10呎高壓油管。
- (2) 高壓油槍搭配萬向接頭，方便、可單手操作。
- (3) 附桶蓋可避免油脂受到汙染。
- (4) 附壓板有助於出油更順暢。
- (5) 4輪的環形底座、桶蓋附有手柄，方便移動。
- (6) 幫浦作動為兩獨立系統，以免空氣汙染油脂。
- (7) 適用NLGI#00-02號黃油。

※另有61922膠邊壓板可供選購，可更有效利用油脂。  
標準配備為61921無膠邊壓板。

Model No. 型號	S67	T67	V67
	S60 Grease pump ratio : 45:1 S60 黃油幫浦， 壓力比：45:1	T60 Grease pump ratio : 50:1 T60 黃油幫浦， 壓力比：50:1	V60 Grease pump ratio : 60:1 V60 黃油幫浦， 壓力比：60:1
<b>Cosisting of 產品標準配備</b>	<b>40054</b> 3/8" Air Connector 3/8" 空氣接頭 <b>40053</b> 1/4" Fluid Coupler 1/4" 接頭 <b>40797-10</b> 1/4" Grease Hose 10 feet 1/4" 高壓油管10呎 <b>40731</b> Grease Gun 黃油槍 <b>61903</b> Drum Cover 桶蓋 <b>61921</b> Follower Plate 壓板 <b>67913</b> Band-type Dolly Assembly 四輪環形底座		



Model No. 型號	Container Size 容量	Pressure Ratio 壓力比	Recommended Operating Pressure 推薦使用壓力	Delivery Rate 輸出量	Shipping N.W. 淨重	Shipping G.W. 毛重	Shipping Measurement 材積
<b>S67</b>	55 kgs	45:1	4 - 9 kg/cm <sup>2</sup>	1.40 kgs/min ●■	18.0 kgs	20.3 kgs	2.5 cuft
<b>T67</b>		50:1	4 - 8 kg/cm <sup>2</sup>	1.23 kgs/min ●■			
<b>V67</b>		60:1	4 - 7 kg/cm <sup>2</sup>	0.99 kgs/min ●■			

● At 6 kg/cm<sup>2</sup> ■ Using NLGI #2 grease at room temperature 25 °C

# S42 / T42 / V42

## Air-operated Grease Lubricator 氣動黃油機

Mobile type for standard 16 kgs pail  
移動式-16公斤油桶用

### Features :

- 10 feet two wire braided High Pressure Grease Hose, allows access to hard to reach applications.
- 40731 High Pressure Grease Gun with 40721 360° swivel for one-handed operation.
- 42901 Shield assembly I.D. 315mm.
- 42911 Base with 4 casters, allows greasing unit easily moved to applications.
- Pumping and suction are two separate systems to avoid contamination of fluid.
- Applicable grease range NLGI #00 - 2.

We have optional 41922 Follower Plate w/rubber rim prevents air pocket, helps priming grease and wipes container clean.

### 特點 :

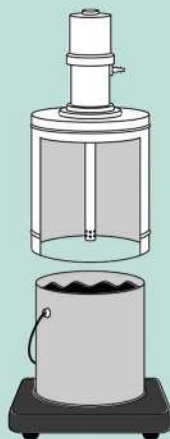
- (1) 配備10呎高壓油管。
- (2) 高壓油槍搭配萬向接頭，方便、可單手操作。
- (3) 桶內徑為31.5公分。
- (4) 4輪底座，方便移動。
- (5) 幫浦作動為兩獨立系統，以免空氣污染油脂。
- (6) 適用NLGI#00-02號黃油。

※另有41922膠邊壓板可供選購，可更有效利用油脂。



### Instructions :

使用示意圖 :



Model No. 型號	S42	T42	V42
	S40 Grease pump ratio : 45:1 S40 黃油幫浦， 壓力比：45:1	T40 Grease pump ratio : 50:1 T40 黃油幫浦， 壓力比：50:1	V40 Grease pump ratio : 60:1 V40 黃油幫浦， 壓力比：60:1
Cosisting of 產品標準配備	40054 3/8" Air Connector 40053 1/4" Fluid Coupler 40797-10 1/4" Grease Hose 10 feet 40731 Grease Gun 42901 Shield Assembly 42911 Base Assembly	3/8" Air Connector 1/4" Fluid Coupler 1/4" Grease Hose 10 feet Grease Gun 桶(內徑31.5公分) 底座	3/8" 空氣接頭 1/4" 接頭 1/4" 高壓油管10呎 黃油槍 桶(內徑31.5公分) 底座

Model No. 型號	Container Size 容量	Pressure Ratio 壓力比	Recommended Operating Pressure 推薦使用壓力	Delivery Rate 輸出量	Shipping N.W. 淨重	Shipping G.W. 毛重	Shipping Measurement 材積
S42	16 kgs	45:1	4 - 9 kg/cm <sup>2</sup>	1.40 kgs/min ●■	19.3 kgs	21.7 kgs	6.5 cuft
T42		50:1	4 - 8 kg/cm <sup>2</sup>	1.23 kgs/min ●■			
V42		60:1	4 - 7 kg/cm <sup>2</sup>	0.99 kgs/min ●■			

● At 6 kg/cm<sup>2</sup> ■ Using NLGI #2 grease at room temperature 25 °C

# S43 / T43 / V43

## Air-operated Grease Lubricator 氣動黃油機

Mobile type for standard 16 - 20 kgs pail  
移動式-16~20公斤油桶用

### Features :

- 10 feet two wire braided High Pressure Grease Hose, allows access to hard to reach applications.
- 40731 High Pressure Grease Gun with 40721 360° swivel for one-handed operation.
- 43901 Shield assembly I.D. 340mm.
- 43913 Base with 2 wheels & 1 caster, allows greasing unit easily moved to applications.
- 43912 Handle allows moving greasing unit easily.
- Pumping and suction are two separate systems to avoid contamination of fluid.
- Applicable grease range NLGI #00 - 2.

We have optional 41922 Follower Plate w/rubber rim prevents air pocket, helps priming grease and wipes container clean.

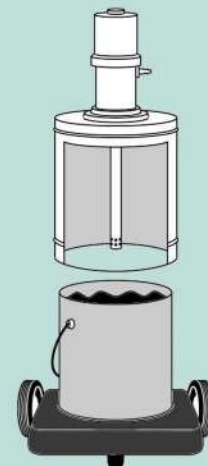
### 特點 :

- (1) 配備10呎高壓油管。
- (2) 高壓油槍搭配萬向接頭，方便、可單手操作。
- (3) 桶內徑為34公分。
- (4) 大輪手推車，適合於不平地面使用。
- (5) 幫浦作動為兩獨立系統，以免空氣污染油脂。
- (6) 適用NLGI#00-02號黃油。

※另有41922膠邊壓板可供選購，可更有效利用油脂。

### Instructions :

使用示意圖 :



Model No. 型號	S43	T43	V43
	S40 Grease pump ratio : 45:1 S40 黃油幫浦， 壓力比：45:1	T40 Grease pump ratio : 50:1 T40 黃油幫浦， 壓力比：50:1	V40 Grease pump ratio : 60:1 V40 黃油幫浦， 壓力比：60:1
Cosisting of 產品標準配備	<b>40054</b> 3/8" Air Connector 3/8" 空氣接頭 <b>40053</b> 1/4" Fluid Coupler 1/4" 接頭 <b>40797-10</b> 1/4" Grease Hose 10 feet 1/4" 高壓油管10呎 <b>40731</b> Grease Gun 黃油槍 <b>43901</b> Shield Assembly 桶(內徑34公分) <b>43913</b> Base Assembly 底座 <b>43912</b> Handle Assembly 扶手		

Model No. 型號	Container Size 容量	Pressure Ratio 壓力比	Recommended Operating Pressure 推薦使用壓力	Delivery Rate 輸出量	Shipping N.W. 淨重	Shipping G.W. 毛重	Shipping Measurement 材積
<b>S43</b>	16 - 20 kgs	45:1	4 - 9 kg/cm <sup>2</sup>	1.40 kgs/min ●■	24.9 kgs	27.5 kgs	6.0 cuft
<b>T43</b>		50:1	4 - 8 kg/cm <sup>2</sup>	1.23 kgs/min ●■			
<b>V43</b>		60:1	4 - 7 kg/cm <sup>2</sup>	0.99 kgs/min ●■			

● At 6 kg/cm<sup>2</sup> ■ Using NLGI #2 grease at room temperature 25 ° C

# S482 / T482 / V482

## Air-operated Grease Lubricator 氣動黃油機

Mobile type, capacity 30 kgs or for standard 16 kgs pail  
移動式-容量30公斤或16公斤油桶用

### Features :

- 10 feet two wire braided High Pressure Grease Hose, allows access to hard to reach applications.
- 40731 High Pressure Grease Gun with 40721 360° swivel for one-handed operation.
- 48901 Container assembly I.D. 322mm.
- 482911 Base with 4 casters, allows greasing unit easily moved to applications.
- Pumping and suction are two separate systems to avoid contamination of fluid.
- Applicable grease range NLGI #00 - 2.

We have optional 41922 Follower Plate w/rubber rim prevents air pocket, helps priming grease and wipes container clean.

### 特點：

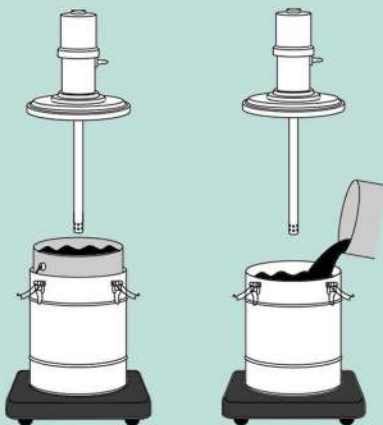
- (1) 配備10呎高壓油管。
- (2) 高壓油槍搭配萬向接頭，方便、可單手操作。
- (3) 桶內徑為32.2公分。
- (4) 4輪底座，方便移動。
- (5) 幫浦作動為兩獨立系統，以免空氣污染油脂。
- (6) 適用NLGI#00-02號黃油。

※另有41922膠邊壓板可選購，可更有效利用油脂。



### Instructions :

使用示意圖：



Model No. 型號	S482	T482	V482
	S40 Grease pump ratio : 45:1 S40 黃油幫浦， 壓力比：45:1	T40 Grease pump ratio : 50:1 T40 黃油幫浦， 壓力比：50:1	V40 Grease pump ratio : 60:1 V40 黃油幫浦， 壓力比：60:1
Consisting of 產品標準配備	<b>40054</b> 3/8" Air Connector 3/8" 空氣接頭 <b>40053</b> 1/4" Fluid Coupler 1/4" 接頭 <b>40797-10</b> 1/4" Grease Hose 10 feet 1/4" 高壓油管10呎 <b>40731</b> Grease Gun 黃油槍 <b>48901</b> Container Assembly 桶(內徑32.2公分) <b>482911</b> Base Assembly 底座		

Model No. 型號	Container Size 容量	Pressure Ratio 壓力比	Recommended Operating Pressure 推薦使用壓力	Delivery Rate 輸出量	Shipping N.W. 淨重	Shipping G.W. 毛重	Shipping Measurement 材積
S482	30 kgs or 16 kgs original pail	45:1	4 - 9 kg/cm <sup>2</sup>	1.40 kgs/min ●■	18.4 kgs	20.8 kgs	6.7 cuft
T482		50:1	4 - 8 kg/cm <sup>2</sup>	1.23 kgs/min ●■			
V482		60:1	4 - 7 kg/cm <sup>2</sup>	0.99 kgs/min ●■			

● At 6 kg/cm<sup>2</sup> ■ Using NLGI #2 grease at room temperature 25 °C



# S483 / T483 / V483

## Air-operated Grease Lubricator 氣動黃油機

Mobile type, capacity 30 kgs or for standard 16 kgs pail  
移動式-容量30公斤或16公斤油桶用

### Features :

- 10 feet two wire braided High Pressure Grease Hose, allows access to hard to reach applications.
- 40731 High Pressure Grease Gun with 40721 360° swivel for one-handed operation.
- 48901 Container assembly I.D. 322mm.
- 483913 Base with 2 wheels & 1 caster, allows greasing unit easily moved to applications.
- 43912 Handle allows moving greasing unit easily.
- Pumping and suction are two separate systems to avoid contamination of fluid.
- Applicable grease range NLGI #00 - 2.

We have optional 41922 Follower Plate w/rubber rim prevents air pocket, helps priming grease and wipes container clean.

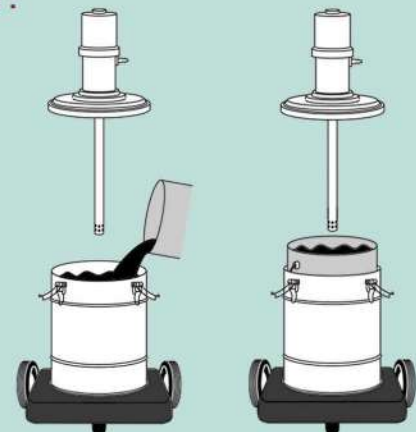
### 特點 :

- (1) 配備10呎高壓油管。
- (2) 高壓油槍搭配萬向接頭，方便、可單手操作。
- (3) 桶內徑為32.2公分。
- (4) 大輪手推車，適用於不平路面。
- (5) 幫浦作動為兩獨立系統，以免空氣污染油脂。
- (6) 適用NLGI#00-02號黃油。

※另有41922膠邊壓板可選購，可更有效利用油脂。

### Instructions :

使用示意圖 :



Model No. 型號	S483	T483	V483
	S40 Grease pump ratio : 45:1 S40 黃油幫浦，壓力比：45:1	T40 Grease pump ratio : 50:1 T40 黃油幫浦，壓力比：50:1	V40 Grease pump ratio : 60:1 V40 黃油幫浦，壓力比：60:1
Consisting of 產品標準配備	40054 3/8" Air Connector 空氣接頭 40053 1/4" Fluid Coupler 接頭 40797-10 1/4" Grease Hose 10 feet 1/4" 高壓油管10呎 40731 Grease Gun 黃油槍 48901 Container Assembly 桶(內徑32.2公分) 483913 Base Assembly 底座 43912 Handle Assembly 扶手		

Model No. 型號	Container Size 容量	Pressure Ratio 壓力比	Recommended Operating Pressure 推薦使用壓力	Delivery Rate 輸出量	Shipping N.W. 淨重	Shipping G.W. 毛重	Shipping Measurement 材積
S483	30 kgs or 16 kgs original pail	45:1	4 - 9 kg/cm <sup>2</sup>	1.40 kgs/min ●■	23.7 kgs	26.3 kgs	6.0 cuft
T483		50:1	4 - 8 kg/cm <sup>2</sup>	1.23 kgs/min ●■			
V483		60:1	4 - 7 kg/cm <sup>2</sup>	0.99 kgs/min ●■			

● At 6 kg/cm<sup>2</sup> ■ Using NLGI #2 grease at room temperature 25 °C

# S485 / T485 / V485

## Air-operated Grease Lubricator 氣動黃油機

Mobile type, capacity 30 kgs or for standard 16 kgs pail  
移動式-容量30公斤或16公斤油桶用

### Features :

- 10 feet two wire braided High Pressure Grease Hose, allows access to hard to reach applications.
- 40731 High Pressure Grease Gun with 40721 360° swivel for one-handed operation.
- 485901 Container assembly I.D. 322mm.
- 485912 Trolley with 2 wheels, allows greasing unit easily moved to applications.
- Pumping and suction are two separate systems to avoid contamination of fluid.
- Applicable grease range NLGI #00 - 2.

We have optional 41922 Follower Plate w/rubber rim prevents air pocket, helps priming grease and wipes container clean.

### 特點 :

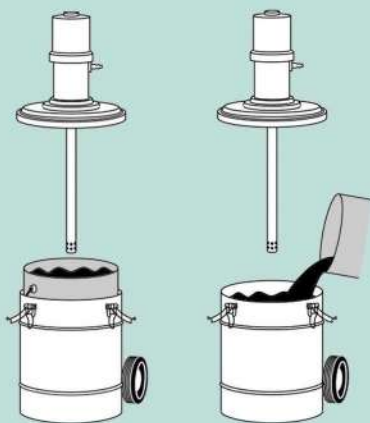
- (1) 配備10呎高壓油管。
- (2) 高壓油槍搭配萬向接頭，方便、可單手操作。
- (3) 桶內徑為32.2公分。
- (4) 2輪手推車，方便移動。
- (5) 幫浦作動為兩獨立系統，以免空氣污染油脂。
- (6) 適用NLGI#00-02號黃油。

※另有41922膠邊壓板可選購，可更有效利用油脂。



### Instructions :

使用示意圖 :



Model No. 型號	S485	T485	V485
	S40 Grease pump ratio : 45:1 S40 黃油幫浦， 壓力比：45:1	T40 Grease pump ratio : 50:1 T40 黃油幫浦， 壓力比：50:1	V40 Grease pump ratio : 60:1 V40 黃油幫浦， 壓力比：60:1
Consisting of 產品標準配備	<b>40054</b> 3/8" Air Connector 3/8" 空氣接頭 <b>40053</b> 1/4" Fluid Coupler 1/4" 接頭 <b>40797-10</b> 1/4" Grease Hose 10 feet 1/4" 高壓油管10呎 <b>40731</b> Grease Gun 黃油槍 <b>485901</b> Container Assembly 桶(內徑32.2公分) <b>485912</b> Trolley Assembly 手推車		

Model No. 型號	Container Size 容量	Pressure Ratio 壓力比	Recommended Operating Pressure 推薦使用壓力	Delivery Rate 輸出量	Shipping N.W. 淨重	Shipping G.W. 毛重	Shipping Measurement 材積
<b>S485</b>	30 kgs or 16 kgs original pail	45:1	4 - 9 kg/cm <sup>2</sup>	1.40 kgs/min ●■	17.0 kgs	18.7 kgs	4.0 cuft
<b>T485</b>		50:1	4 - 8 kg/cm <sup>2</sup>	1.23 kgs/min ●■			
<b>V485</b>		60:1	4 - 7 kg/cm <sup>2</sup>	0.99 kgs/min ●■			

● At 6 kg/cm<sup>2</sup> ■ Using NLGI #2 grease at room temperature 25 °C



# S487 / T487 / V487

## Air-operated Grease Lubricator 氣動黃油機

Mobile type, capacity 30 kgs or for standard 16 kgs pail  
移動式-容量30公斤或16公斤油桶用

### Features :

- 10 feet two wire braided High Pressure Grease Hose, allows access to hard to reach applications.
- 40731 High Pressure Grease Gun with 40721 360° swivel for one-handed operation.
- 48901 Container assembly I.D. 322mm.
- 487913 Band-Type Dolly with 4 casters, allows greasing unit easily moved to applications.
- Pumping and suction are two separate systems to avoid contamination of fluid.
- Applicable grease range NLGI #00 - 2.

We have optional 41922 Follower Plate w/rubber rim prevents air pocket, helps priming grease and wipes container clean.

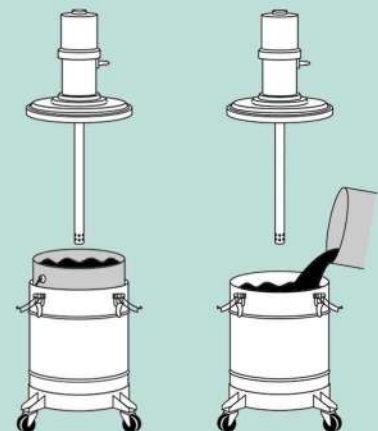
### 特點：

- (1) 配備10呎高壓油管。
- (2) 高壓油槍搭配萬向接頭，方便、可單手操作。
- (3) 桶內徑為32.2公分。
- (4) 4輪環形底座、桶蓋附有手柄，方便移動。
- (5) 幫浦作動為兩獨立系統，以免空氣污染油脂。
- (6) 適用NLGI#00-02號黃油。

※另有41922膠邊壓板可選購，可更有效利用油脂。

### Instructions :

使用示意圖：



Model No. 型號	S487	T487	V487
	S40 Grease pump ratio : 45:1 S40 黃油幫浦，壓力比：45:1	T40 Grease pump ratio : 50:1 T40 黃油幫浦，壓力比：50:1	V40 Grease pump ratio : 60:1 V40 黃油幫浦，壓力比：60:1
<b>Cosisting of 產品標準配備</b>	<b>40054</b> 3/8" Air Connector 3/8" 空氣接頭 <b>40053</b> 1/4" Fluid Coupler 1/4" 接頭 <b>40797-10</b> 1/4" Grease Hose 10 feet 1/4" 高壓油管10呎 <b>40731</b> Grease Gun 黃油槍 <b>48901</b> Container Assembly 桶(內徑32.2公分) <b>487913</b> Band-Type Dolly Assembly 底座		

Model No. 型號	Container Size 容量	Pressure Ratio 壓力比	Recommended Operating Pressure 推薦使用壓力	Delivery Rate 輸出量	Shipping N.W. 淨重	Shipping G.W. 毛重	Shipping Measurement 材積
<b>S487</b>	30 kgs or 16 kgs original pail	45:1	4 - 9 kg/cm <sup>2</sup>	1.40 kgs/min ●■	15.1 kgs	17.5 kgs	4.5 cuft
<b>T487</b>		50:1	4 - 8 kg/cm <sup>2</sup>	1.23 kgs/min ●■			
<b>V487</b>		60:1	4 - 7 kg/cm <sup>2</sup>	0.99 kgs/min ●■			

● At 6 kg/cm<sup>2</sup> ■ Using NLGI #2 grease at room temperature 25 °C



# S31 / T31 / V31

## Air-operated Grease Lubricator 氣動黃油機

Portable type for standard 16 - 20 kgs pail  
手提式-16~20公斤油桶用

### Features :

- 10 feet two wire braided High Pressure Grease Hose, allows access to hard to reach applications.
- 40731 High Pressure Grease Gun with 40721 360° swivel for one-handed operation.
- 31903 Drum Cover prevents contamination I.D. 305mm.
- 40006H Handle allows carry greasing unit easily.
- Pumping and suction are two separate systems to avoid contamination of fluid.
- Applicable grease range NLGI #00 - 2.

We have optional 41922 Follower Plate w/rubber rim prevents air pocket, helps priming grease and wipes container clean.

We have optional 47913 Band-type Dolly allows moving greasing unit easily to applications.

### 特點 :

- (1) 配備10呎高壓油管。
- (2) 高壓油槍搭配萬向接頭，方便、可單手操作。
- (3) 附桶蓋，防止油脂被汙染，內徑為30.5公分。
- (4) 提把設計，方便移動。
- (5) 幫浦作動為兩獨立系統，以免空氣汙染油脂。
- (6) 適用NLGI#00-02號黃油。

※另有41922膠邊壓板可供選購，可更有效利用油脂。

※另有47913四輪環形底座可選購。



Option 選購	
<b>41922</b> Follower Plate (297mm) 膠邊壓板(29.7公分)	<b>47913</b> Band-type Dolly 四輪環形底座

Model No. 型號	S31	T31	V31
Consisting of 產品標準配備	S30 Grease pump ratio : 45:1 S30 黃油幫浦， 壓力比：45:1	T30 Grease pump ratio : 50:1 T30 黃油幫浦， 壓力比：50:1	V30 Grease pump ratio : 60:1 V30 黃油幫浦， 壓力比：60:1
	<b>40054</b>	3/8" Air Connector 3/8" 空氣接頭	
	<b>40053</b>	1/4" Fluid Coupler 1/4" 接頭	
	<b>40797-10</b>	1/4" Grease Hose 10 feet 1/4" 高壓油管10呎	
	<b>40731</b> <b>31903</b>	Grease Gun 黃油槍 Drum Cover 桶蓋(內徑30.5公分)	

Model No. 型號	Container Size 容量	Pressure Ratio 壓力比	Recommended Operating Pressure 推薦使用壓力	Delivery Rate 輸出量	Shipping N.W. 淨重	Shipping G.W. 毛重	Shipping Measurement 材積
<b>S31</b>	16-20 kgs	45:1	4 - 9 kg/cm <sup>2</sup>	1.40 kgs/min ●■	11.4 kgs	12.4 kgs	1.3 cuft
<b>T31</b>		50:1	4 - 8 kg/cm <sup>2</sup>	1.23 kgs/min ●■			
<b>V31</b>		60:1	4 - 7 kg/cm <sup>2</sup>	0.99 kgs/min ●■			

● At 6 kg/cm<sup>2</sup> ■ Using NLGI #2 grease at room temperature 25 °C

# F81 / J81 / L81

## Air-operated Oil Lubricator 氣動機油機

Fixed type for standard 200 ltrs/50 gals drum  
固定式-容量200公升 / 50加侖油桶用

### Features :

- 20 feet one wire braided Medium Pressure Oil Hose, allows access to hard to reach applications.
- 940735 Medium Pressure Oil Gun with non-drip nozzle and 360° swivel for one-handed operation.
- Pumping and suction are two separate systems to avoid contamination of fluid.
- Applicable Oil range, F81 : SAE 0 - 120.  
J81 : SAE 0 - 140.  
L81 : SAE 0 - 200.

We have optional 83923 carts with 2 wheels & 2 casters allows moving oiling unit easily to move to applications.

### 特點 :

- (1) 配備20呎油管。
- (2) 高壓油槍搭配萬向接頭，方便、可單手操作。
- (3) 幫浦作動為兩獨立系統，以免空氣污染油脂。
- (6) F81適用 機油、液壓油、操作油、變速箱油。  
J81適用 機油、液壓油、操作油、齒輪油。  
L81適用 機油、液壓油、操作油、齒輪油、工業用齒輪油。

※另有 83923 50加侖泵浦專用推車可選購。



Model No. 型號	F81	J81	L81
	F80 Oil pump ratio : 5:1 F80 機油幫浦，壓力比：5:1	J80 Oil pump ratio : 9:1 J80 機油幫浦，壓力比：9:1	L80 Oil pump ratio : 15:1 L80 機油幫浦，壓力比：15:1
Consisting of 產品標準配備	40054 3/8" Air Connector 3/8" 空氣接頭	3/8" Fluid Coupler 3/8" 接頭	
	40798-20 3/8" Oil Hose 20 feet 3/8" 高壓油管20呎	940735 Oil Gun 機油槍	
	20180906 Bung Opening 管束	40980906 Bung Opening 管束	41580906 Bung Opening 管束

Model No. 型號	Container Size 容量	Pressure Ratio 壓力比	Recommended Operating Pressure 推薦使用壓力	Delivery Rate 輸出量	Shipping N.W. 淨重	Shipping G.W. 毛重	Shipping Measurement 材積
F81	200 ltrs (50 gals)	5:1	3 - 9 kg/cm <sup>2</sup>	14.6 ltrs/min ●■	15.6 kgs	16.7 kgs	1.5 cuft
J81		9:1		13.5 ltrs/min ●■	14.0 kgs	15.1 kgs	
L81		15:1		8.5 ltrs/min ●■	13.7 kgs	14.8 kgs	

● At 6 kg/cm<sup>2</sup> ■ Using motor oil SAE 30 at room temperature 25 °C

# F81H

## Air-operated Oil Lubricator 氣動機油機 - 大流量

Fixed type for standard 200 ltrs/50 gals drum  
固定式-容量200公升 / 50加侖油桶用

### Features :

- 10 feet one wire braided Medium Pressure Oil Hose, allows access to hard to reach applications.
- 540735 Oil Gun.
- Pumping and suction are two separate systems to avoid contamination of fluid.
- Applicable Oil range, F81 : SAE 0 - 120.

We have optional 83923 carts with 2 wheels & 2 casters allows moving oiling unit easily to move to applications.

### 特點 :

- (1) 配備10呎油管。
- (2) 搭配1英吋大口徑油管，輸出量每分鐘可達40公升。
- (3) 幫浦作動為兩獨立系統，以免空氣污染油脂。
- (6) 適用 機油、液壓油、操作油、變速箱油。

※另有 83923 50加侖泵浦專用推車可選購。



83923 Trolley Assembly 50加侖泵浦專用推車

Model No. 型號	F81H	
Consisting of 產品標準配備	<b>F80</b>	Oil pump ratio : 5:1 F80機油幫浦，壓力比：5:1
	<b>40054</b>	3/8" Air Connector 3/8" 空氣接頭
	<b>5400532</b>	1" Fluid Coupler 1" 接頭
	<b>40598-10</b>	1" Oil Hose 10 feet 1" 油管10呎
	<b>540735</b>	Oil Gun 機油槍
	<b>20180906</b>	Bung opening 管束

Model No. 型號	Container Size 容量	Pressure Ratio 壓力比	Recommended Operating Pressure 推薦使用壓力	Delivery Rate 輸出量	Shipping N.W. 淨重	Shipping G.W. 毛重	Shipping Measurement 材積
<b>F81H</b>	200 ltrs (50 gals)	5:1	3 - 9 kg/cm <sup>2</sup>	40.0 ltrs/min ●■	18.0 kgs	20.0 kgs	3.0 cuft

● At 6 kg/cm<sup>2</sup> ■ Using motor oil SAE 30 at room temperature 25 °C



# F676 / J676 / L676

## Air-operated Oil Lubricator 氣動機油機

Mobile type, capacity 60 ltrs pail  
移動式-容量60公升油桶用

### Features :

- 10 feet one wire braided Medium Pressure Oil Hose, allows access to hard to reach applications.
- 940735 Medium Pressure Oil Gun with non-drip nozzle and 360° swivel for one-handed operation.
- 62017 Container assembly I.D. 356mm.
- 67913 Band-Type Dolly with 4 casters, allows oiling unit easily moved to applications.
- Pumping and suction are two separate systems to avoid contamination of fluid.
- Applicable Oil range, F676 : SAE 0 - 120.  
J676 : SAE 0 - 140.  
L676 : SAE 0 - 200.

### 特點：

- (1) 配備10呎油管。
- (2) 高壓油槍搭配萬向接頭，方便、可單手操作。
- (3) 桶內徑為35.6公分。
- (4) 4輪的環形底座，方便移動。
- (5) 幫浦作動為兩獨立系統，以免空氣污染油脂。
- (6) F676適用 機油、液壓油、操作油、變速箱油。  
J676適用 機油、液壓油、操作油、齒輪油。  
L676適用 機油、液壓油、操作油、齒輪油、工業用齒輪油。

### Instructions : 使用示意圖：



Model No. 型號	F676	J676	L676
	F60 Oil pump ratio : 5:1 F60 機油幫浦， 壓力比：5:1	J60 Oil pump ratio : 9:1 J60 機油幫浦， 壓力比：9:1	L60 Oil pump ratio : 15:1 L60 機油幫浦， 壓力比：15:1
Cosisting of 產品標準配備	40054 3/8" Air Connector 3/8" 空氣接頭 940053 3/8" Fluid Coupler 3/8" 接頭 40798-10 3/8" Oil Hose 10 feet 3/8" 高壓油管10呎 940735 Oil Gun 機油槍 61903 Drum Cover 桶蓋 62017 Container Assembly 桶(內徑35.6公分) 67913 Band-type Dolly Assembly 底座		

Model No. 型號	Container Size 容量	Pressure Ratio 壓力比	Recommended Operating Pressure 推薦使用壓力	Delivery Rate 輸出量	Shipping N.W. 淨重	Shipping G.W. 毛重	Shipping Measurement 材積
F676	60 ltrs	5:1	3 - 9 kg/cm <sup>2</sup>	15.6 ltrs/min ●■	25.4 kgs	29.1 kgs	6.9 cuft
J676		9:1		14.5 ltrs/min ●■			
L676		15:1		9.1 ltrs/min ●■			

● At 6 kg/cm<sup>2</sup> ■ Using motor oil SAE 30 at room temperature 25 °C

# F482 / J482 / L482

## Air-operated Oil Lubricator 氣動機油機

Mobile type, capacity 33 ltrs or for standard 20 ltrs/5 gals pail  
移動式-容量33公升或20公升(5加侖)油桶用

### Features :

- 10 feet one wire braided Medium Pressure Oil Hose, allows access to hard to reach applications.
- 940735 Medium Pressure Oil Gun with non-drip nozzle and 360° swivel for one-handed operation.
- 48901 Container assembly I.D. 322mm.
- 482911 Base with 4 casters, allows oiling unit easily moved to applications.
- Pumping and suction are two separate systems to avoid contamination of fluid.
- Applicable Oil range, F482 : SAE 0 - 120.  
J482 : SAE 0 - 140.  
L482 : SAE 0 - 200.

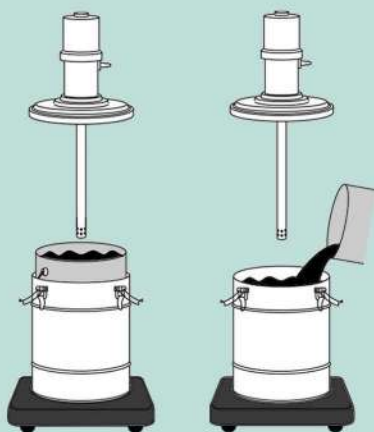
### 特點 :

- (1) 配備10呎油管。
- (2) 高壓油槍搭配萬向接頭，方便、可單手操作。
- (3) 桶內徑為32.2公分。
- (4) 4輪底座，方便移動。
- (5) 幫浦作動為兩獨立系統，以免空氣污染油脂。
- (6) F482適用 機油、液壓油、操作油、變速箱油。  
J482適用 機油、液壓油、操作油、齒輪油。  
L482適用 機油、液壓油、操作油、齒輪油、工業用齒輪油。



### Instructions :

使用示意圖 :



Model No. 型號	F482	J482	L482
	F40 Oil pump ratio : 5:1 F40 機油幫浦，壓力比：5:1	J40 Oil pump ratio : 9:1 J40 機油幫浦，壓力比：9:1	L40 Oil pump ratio : 15:1 L40 機油幫浦，壓力比：15:1
Consisting of 產品標準配備	40054 3/8" Air Connector 3/8" 空氣接頭 940053 3/8" Fluid Coupler 3/8" 接頭 40798-10 3/8" Oil Hose 10 feet 3/8" 高壓油管10呎 940735 Oil Gun 機油槍 48901 Container Assembly 桶(內徑32.2公分) 482911 Base Assembly 底座		

Model No. 型號	Container Size 容量	Pressure Ratio 壓力比	Recommended Operating Pressure 推薦使用壓力	Delivery Rate 輸出量	Shipping N.W. 淨重	Shipping G.W. 毛重	Shipping Measurement 材積
F482	33 ltrs or 20 ltrs original pail	5:1	3 - 9 kg/cm <sup>2</sup>	15.6 ltrs/min ●■	18.5 kgs	20.9 kgs	6.7 cuft
J482		9:1		14.5 ltrs/min ●■			
L482		15:1		9.1 ltrs/min ●■			

● At 6 kg/cm<sup>2</sup> ■ Using motor oil SAE 30 at room temperature 25 °C

# F483 / J483 / L483

## Air-operated Oil Lubricator 氣動機油機

Mobile type, capacity 33 ltrs or for standard 20 ltrs/5 gals pail

移動式-容量33公升或20公升(5加侖)油桶用

### Features :

- 10 feet one wire braided Medium Pressure Oil Hose, allows access to hard to reach applications.
- 940735 Medium Pressure Oil Gun with non-drip nozzle and 360° swivel for one-handed operation.
- 48901 Container assembly I.D. 322mm.
- 483913 Base with 2 wheels & 1 caster, allows oiling unit easily moved to applications.
- 43912 Handle allows moving oiling unit easily.
- Pumping and suction are two separate systems to avoid contamination of fluid.
- Applicable Oil range, F483 : SAE 0 - 120.  
J483 : SAE 0 - 140.  
L483 : SAE 0 - 200.

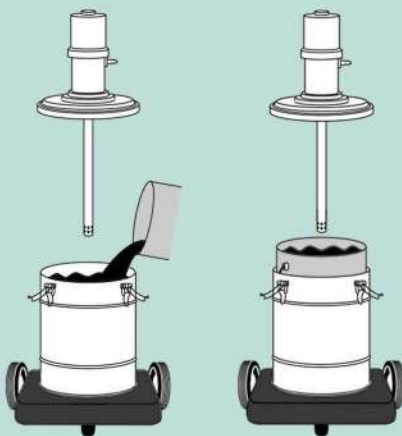
### 特點 :

- (1) 配備10呎油管。
- (2) 高壓油槍搭配萬向接頭，方便、可單手操作。
- (3) 桶內徑為32.2公分。
- (4) 大輪手推車，適用於不平地面。
- (5) 幫浦作動為兩獨立系統，以免空氣污染油脂。
- (6) F483適用 機油、液壓油、操作油、變速箱油。  
J483適用 機油、液壓油、操作油、齒輪油。  
L483適用 機油、液壓油、操作油、齒輪油、工業用齒輪油。



### Instructions :

使用示意圖 :



Model No. 型號	F483	J483	L483
	F40 Oil pump ratio : 5:1 F40 機油幫浦， 壓力比 : 5:1	J40 Oil pump ratio : 9:1 J40 機油幫浦， 壓力比 : 9:1	L40 Oil pump ratio : 15:1 L40 機油幫浦， 壓力比 : 15:1
Cosisting of 產品標準配備	<b>40054</b> 3/8" Air Connector 3/8" 空氣接頭 <b>940053</b> 3/8" Fluid Coupler 3/8" 接頭 <b>40798-10</b> 3/8" Oil Hose 10 feet 3/8" 高壓油管10呎 <b>940735</b> Oil Gun 機油槍 <b>48901</b> Container Assembly 桶(內徑32.2公分) <b>483913</b> Base Assembly 底座 <b>43912</b> Handle Assembly 扶手		

Model No. 型號	Container Size 容量	Pressure Ratio 壓力比	Recommended Operating Pressure 推薦使用壓力	Delivery Rate 輸出量	Shipping N.W. 淨重	Shipping G.W. 毛重	Shipping Measurement 材積
<b>F483</b>	33 ltrs or 20 ltrs original pail	5:1	3 - 9 kg/cm <sup>2</sup>	15.6 ltrs/min ●■	23.9 kgs	26.5 kgs	6.0 cuft
<b>J483</b>		9:1		14.5 ltrs/min ●■			
<b>L483</b>		15:1		9.1 ltrs/min ●■			

● At 6 kg/cm<sup>2</sup> ■ Using motor oil SAE 30 at room temperature 25 °C

# F487 / J487 / L487

## Air-operated Oil Lubricator 氣動機油機

Mobile type, capacity 33 ltrs or for standard 20 ltrs/5 gals pail  
移動式-容量33公升或20公升(5加侖)油桶用

### Features :

- 10 feet one wire braided Medium Pressure Oil Hose, allows access to hard to reach applications.
- 940735 Medium Pressure Oil Gun with non-drip nozzle and 360° swivel for one-handed operation.
- 48901 Container assembly I.D. 322mm.
- 487913 Band-Type Dolly with 4 casters, allows oiling unit easily moved to applications.
- Pumping and suction are two separate systems to avoid contamination of fluid.
- Applicable Oil range, F487 : SAE 0 - 120.  
J487 : SAE 0 - 140.  
L487 : SAE 0 - 200.

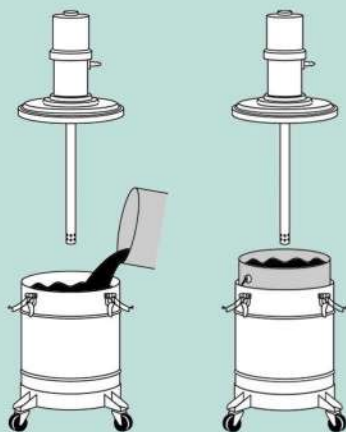
### 特點 :

- (1) 配備10呎油管。
- (2) 高壓油槍搭配萬向接頭，方便、可單手操作。
- (3) 桶內徑為32.2公分。
- (4) 4輪的環形底座、桶蓋附有手柄，方便移動。
- (5) 幫浦作動為兩獨立系統，以免空氣污染油脂。
- (6) F487適用 機油、液壓油、操作油、變速箱油。  
J487適用 機油、液壓油、操作油、齒輪油。  
L487適用 機油、液壓油、操作油、齒輪油、工業用齒輪油。



### Instructions :

使用示意圖 :



Model No. 型號	F487	J487	L487
	F40 Oil pump ratio : 5:1 F40 機油幫浦，壓力比：5:1	J40 Oil pump ratio : 9:1 J40 機油幫浦，壓力比：9:1	L40 Oil pump ratio : 15:1 L40 機油幫浦，壓力比：15:1
Consisting of 產品標準配備	40054 3/8" Air Connector 3/8" 空氣接頭 940053 3/8" Fluid Coupler 3/8" 接頭 40798-10 3/8" Oil Hose 10 feet 3/8" 高壓油管10呎 940735 Oil Gun 機油槍 48901 Container Assembly 桶(內徑32.2公分) 487913 Band-type Dolly Assembly 底座		

Model No. 型號	Container Size 容量	Pressure Ratio 壓力比	Recommended Operating Pressure 推薦使用壓力	Delivery Rate 輸出量	Shipping N.W. 淨重	Shipping G.W. 毛重	Shipping Measurement 材積
F487	33 ltrs or 20 ltrs original pail	5:1	3 - 9 kg/cm <sup>2</sup>	15.6 ltrs/min ●■	17.1 kgs	18.8 kgs	4.5 cuft
J487		9:1		14.5 ltrs/min ●■			
L487		15:1		9.1 ltrs/min ●■			

● At 6 kg/cm<sup>2</sup> ■ Using motor oil SAE 30 at room temperature 25 °C

S series 45:1, T series 50:1 and V series 60:1 heavy duty grease pump. with 3" effective dia. air motor, 2-3/4" stroke, 3/8"PT-19(F) air inlet, 1/4"PT-19(F) fluid outlet.

壓力比：S系列 45:1, T系列 50:1, V系列 60:1。

# S80 / T80 / V80 S60 / T60 / V60

## Air-operated Grease Pump 氣動黃油幫浦

### Features :

- Premium quality, reliable & excellent for high volume grease user.
- Pumping and suction are two separate systems to avoid contamination of fluid.
- Applicable grease range NLGI #00 - 2.

### 特點：

- (1) 高品質、高輸出量，符合大量使用之需求。
- (2) 幫浦作動為兩獨立系統，以免空氣污染油脂。
- (3) 適用NLGI#00-02號黃油。



Model No. 型號	S80	T80	V80
Consisting of 產品標準配備	S80 Grease pump ratio : 45:1 S80 黃油幫浦， 壓力比：45:1	T80 Grease pump ratio : 50:1 T80 機油幫浦， 壓力比：50:1	V80 Grease pump ratio : 60:1 V80 機油幫浦， 壓力比：60:1
	S60	T60	V60
	S60 Grease pump ratio : 45:1 S60 黃油幫浦， 壓力比：45:1	T60 Grease pump ratio : 50:1 T60 機油幫浦， 壓力比：50:1	V60 Grease pump ratio : 60:1 V60 機油幫浦， 壓力比：60:1
40054	3/8" Air Connector		3/8" 空氣接頭
40053	1/4" Fluid Coupler		1/4" 接頭

Model No. 型號	Container Size 容量	Pressure Ratio 壓力比	Shank Length 抽油管長度	Delivery Rate 輸出量	Shipping N.W. 淨重	Shipping G.W. 毛重	Shipping Measurement 材積
S80	180 kgs	45:1	826 mm +	3.35 kgs/min ●■	9.6 kgs	10.5 kgs	1.5 cuft
T80		50:1		2.97 kgs/min ●■			
V80		60:1		2.25 kgs/min ●■			

- + Different length to fit diversity of drums
- In free delivery (no hose, gun), at 6 kg/cm<sup>2</sup>
- Using NLGI #2 grease at room temperature 25 °C

Model No. 型號	Container Size 容量	Pressure Ratio 壓力比	Shank Length 抽油管長度	Delivery Rate 輸出量	Shipping N.W. 淨重	Shipping G.W. 毛重	Shipping Measurement 材積
S60	55 kgs	45:1	650 mm +	3.35 kgs/min ●■	8.9 kgs	9.7 kgs	1.3 cuft
T60		50:1		2.97 kgs/min ●■			
V60		60:1		2.25 kgs/min ●■			

- + Different length to fit diversity of drums
- In free delivery (no hose, gun), at 6 kg/cm<sup>2</sup>
- Using NLGI #2 grease at room temperature 25 °C



S series 45:1, T series 50:1 and V series 60:1 heavy duty grease pump. with 3" effective dia. air motor, 2-3/4" stroke, 3/8"PT-19(F) air inlet, 1/4"PT-19(F) fluid outlet.

壓力比：S系列 45:1, T系列 50:1, V系列 60:1。適用00-02號黃油。

# S40 / T40 / V40 S30 / T30 / V30

## Air-operated Grease Pump 氣動黃油幫浦

### Features :

- Premium quality, reliable & excellent for high volume grease user.
- Pumping and suction are two separate systems to avoid contamination of fluid.
- Applicable grease range NLGI #00 - 2.

### 特點：

- (1) 高品質、高輸出量，符合大量使用之需求。
- (2) 幫浦作動為兩獨立系統，以免空氣污染油脂。
- (3) 適用NLGI#00-02號黃油。



Model No. 型號	S40	T40	V40
Cosisting of 產品標準配備	S40 Grease pump ratio : 45:1 S40 黃油幫浦， 壓力比：45:1	T40 Grease pump ratio : 50:1 T40 機油幫浦， 壓力比：50:1	V40 Grease pump ratio : 60:1 V40 機油幫浦， 壓力比：60:1
	S30	T30	V30
	S30 Grease pump ratio : 45:1 S30 黃油幫浦， 壓力比：45:1	T30 Grease pump ratio : 50:1 T30 機油幫浦， 壓力比：50:1	V30 Grease pump ratio : 60:1 V30 機油幫浦， 壓力比：60:1
<b>40054</b>	3/8" Air Connector 3/8" 空氣接頭		
<b>40053</b>	1/4" Fluid Coupler 1/4" 接頭		

Model No. 型號	Container Size 容量	Pressure Ratio 壓力比	Shank Length 抽油管長度	Delivery Rate 輸出量	Shipping N.W. 淨重	Shipping G.W. 毛重	Shipping Measurement 材積
<b>S40</b>	16 - 20 kgs	45:1	436 mm	3.35 kgs/min ●■	8.0 kgs	8.8 kgs	1.0 cuft
<b>T40</b>		50:1		2.97 kgs/min ●■			
<b>V40</b>		60:1		2.25 kgs/min ●■			

● In free delivery (no hose, gun), at 6 kg/cm<sup>2</sup>  
■ Using NLGI #2 grease at room temperature 25 °C

Model No. 型號	Container Size 容量	Pressure Ratio 壓力比	Shank Length 抽油管長度	Delivery Rate 輸出量	Shipping N.W. 淨重	Shipping G.W. 毛重	Shipping Measurement 材積
<b>S30</b>	16 - 20 kgs	45:1	322 mm +	3.35 kgs/min ●■	7.7 kgs	8.4 kgs	0.9 cuft
<b>T30</b>		50:1		2.97 kgs/min ●■			
<b>V30</b>		60:1		2.25 kgs/min ●■			

+ Different length to fit diversity of drums  
● In free delivery (no hose, gun), at 6 kg/cm<sup>2</sup>  
■ Using NLGI #2 grease at room temperature 25 °C

A series 1:1, B series 2:1 oil pump

壓力比：A系列 1:1, B系列 2:1



**A80  
AS80**



**B80  
BS80**

## A80 / B80

### Air-operated Oil Pump 氣動機油幫浦

Oil pump, for standard 200 ltrs drum  
油泵-容量200公升(50加侖)油桶用

A series 1:1 oil pump with 1-13/32" effective dia. air motor, 4" stroke, 1/4"PT-19(F) air inlet, 3/4"PT-14(F) fluid outlet

B series 2:1 oil pump with 1-13/32" effective dia. air motor, 4" stroke, 1/4"PT-19(F) air inlet, 1/2"PT-14(F) fluid outlet

#### Features :

- Pumping and suction are two separate systems to avoid contamination of fluid.
- Applicable oil range SAE 0 - 120.

#### 特點：

- (1) 輸出量：A80 每分鐘可達17公升。  
B80 每分鐘可達12公升。
- (2) 幫浦作動為兩獨立系統，以免空氣污染油脂。
- (3) 適用於機油、液壓油、操作油。

## AS80 / BS80

### Air-operated Oil Pump 氣動機油幫浦

Similar to A80/B80, but for non-corrosion solvent  
規格與A80/B80相同，但適用於非腐蝕性溶劑

Model No. 型號	A80/AS80	B80/BS80
Cosisting of 產品標準配備	A80 Oil pump, ratio : 1:1 A80 機油幫浦， 壓力比：1:1	B80 Oil pump, ratio : 2:1 B80 機油幫浦， 壓力比：2:1
	20180054 Air Connector 空氣接頭 20180906 Bung Opening 管束	

Model No. 型號	Container Size 容量	Pressure Ratio 壓力比	Shank Length 抽油管長度	Delivery Rate 輸出量	Shipping N.W. 淨重	Shipping G.W. 毛重	Shipping Measurement 材積
<b>A80/AS80</b>	200 ltrs (50 gals)	1:1	866 mm	38 ltrs/min ●■	6.4 kgs	7.0 kgs	0.6 cuft
<b>B80/BS80</b>		2:1		27 ltrs/min ●■	6.2 kgs	6.8 kgs	

- In free delivery (no hose, gun), at 6 kg/cm<sup>2</sup>
- Using motor oil SAE 30 at room temperature 25 °C

F series 5:1, J series 9:1 and L series 15:1 oil pump  
 壓力比：F系列 5:1, J系列 9:1, L系列 15:1

# F80 / J80 / L80

## Air-operated Oil Pump 氣動機油幫浦

Oil pump, for standard 200 ltrs drum  
 油泵-容量200公升(50加侖)油桶用

F series 5:1 oil pump with 3" effective dia. air motor, 2-3/4" stroke, 3/8"PT-19(F) air inlet, 3/4"PT-14(F) fluid outlet

J series 9:1 oil pump with 3" effective dia. air motor, 2-3/4" stroke, 3/8"PT-19(F) air inlet, 3/8"PT-19(F) fluid outlet

L series 15:1 oil pump with 3" effective dia. air motor, 2-3/4" stroke, 3/8"PT-19(F) air inlet, 3/8"PT-19(F) fluid outlet

### Features :

- Pumping and suction are two separate systems to avoid contamination of fluid.
- Applicable Oil range, F81 : SAE 0 - 120.  
 J81 : SAE 0 - 140.  
 L81 : SAE 0 - 200.

### 特點：

- (1) 幫浦作動為兩獨立系統，以免空氣污染油脂。
- (2) F80適用 機油、液壓油、操作油、變速箱油。  
 J80適用 機油、液壓油、操作油、齒輪油。  
 L80適用 機油、液壓油、操作油、齒輪油、工業用齒輪油。

# FS80 / JS80 / LS80

## Air-operated Oil Pump 氣動機油幫浦

Similar to F80/J80/L80, but for non-corrosion solvent  
 規格與F80/J80/L80相同，但適用於非腐蝕性溶劑



F80  
 FS80

J80  
 JS80

L80  
 LS80

Model No. 型號	F80/FS80	J80/JS80	L80/LS80
Consisting of 產品標準配備	<b>F80 Oil pump ratio : 5:1</b> F80 機油幫浦，壓力比：5:1	<b>J80 Oil pump ratio : 9:1</b> J80 機油幫浦，壓力比：9:1	<b>L80 Oil pump ratio : 15:1</b> L80 機油幫浦，壓力比：15:1
	<b>20180906</b> Bung Opening 管束	<b>40980906</b> Bung Opening 管束	<b>41580906</b> Bung Opening 管束
	<b>540053</b> 3/4" Fluid Coupler 3/4" 接頭	<b>940053</b> 3/8" Fluid Coupler 3/8" 接頭	<b>940053</b> 3/8" Fluid Coupler 3/8" 接頭
	<b>40054</b> 3/8" Air Connector 3/8" 空氣接頭		

Model No. 型號	Container Size 容量	Pressure Ratio 壓力比	Shank Length 抽油管長度	Delivery Rate 輸出量	Shipping N.W. 淨重	Shipping G.W. 毛重	Shipping Measurement 材積
<b>F80/FS80</b>	200 ltrs (50 gals)	5:1	906 mm	41 ltrs/min ●■	12.4 kgs	13.6 kgs	1.5 cuft
<b>J80/JS80</b>		9:1		19 ltrs/min ●■	10.8 kgs	12.0 kgs	
<b>L80/LS80</b>		15:1		11 ltrs/min ●■	10.5 kgs	11.7 kgs	

● In free delivery (no hose, gun), at 6 kg/cm<sup>2</sup>  
 ■ Using motor oil SAE 30 at room temperature 25° C

A series 1:1, B series 2:1, F series 5:1, J series 9:1 and L series 15:1 oil pump  
 壓力比：A系列 1:1, B系列 2:1, F系列 5:1, J系列 9:1, L系列 15:1



## A30 / B30

Air-operated Oil pump | 氣動機油幫浦

Stub, With 1-13/32" effective dia. air motor, 4" stroke.

A series 1:1 oil pump : 1-1/2"PT-11(F) fluid inlet and 3/4"PT-14(F) fluid outlet.

B series 2:1 oil pump : 3/4"PT-14(F) fluid inlet and 1/2"PT-14(F) fluid outlet.

## F30 / J30 / L30

Air-operated Oil pump | 氣動機油幫浦

Stub, With 3" effective dia. air motor, 2-3/4" stroke.

F series 5:1 oil pump : 1-1/2"PT-11(F) fluid inlet and 3/4"PT-14(F) fluid outlet.

J series 9:1 oil pump : 3/4"PT-14(F) fluid inlet and 3/8"PT-19(F) fluid outlet.

L series 15:1 oil pump : 3/4"PT-14(F) fluid inlet and 3/8"PT-19(F) fluid outlet.

### Features :

- Pumping and suction are two separate systems to avoid contamination of fluid.
- Applicable oil range, A30. B30. F30 : SAE 0 - 120.  
 J30 : SAE 0 - 140.  
 L30 : SAE 0 - 200.

### 特點：

- (1) 幫浦作動為兩獨立系統，以免空氣污染油脂。
- (2) A30、B30、F30適用於機油、液壓油、操作油、變速箱油。  
 J30適用於機油、液壓油、操作油、齒輪油。  
 L30適用於機油、液壓油、操作油、齒輪油、工業用齒輪油。

Model No. 型號	A30	B30	F30	J30	L30
	ratio : 1:1 壓力比:1:1	ratio : 2:1 壓力比:2:1	ratio : 5:1 壓力比:5:1	ratio : 9:1 壓力比:9:1	ratio : 15:1 壓力比:15:1
Consisting of 產品標準配備	20180054 Air Connector - 1/4"PT-19(F) air inlet 空氣接頭 - 1/4" PT-19(F) 入口		40054 Air Connector - 3/8"PT-19(F) air inlet 空氣接頭 - 3/8" PT-19(F)入口		
			540053 Fluid Coupler 出油接頭	940053 Fluid Connector 出油接頭	

Model No. 型號	Container Size 容量	Pressure Ratio 壓力比	Shank Length 抽油管長度	DeliveryRate 輸出量	Shipping N.W. 淨重	Shipping G.W. 毛重	Shipping Measurement 材積
A30	stub	1:1	299 mm	38 ltrs/min ●■	4.0 kgs	4.4 kgs	0.4 cuft
B30		2:1	293 mm	27 ltrs/min ●■			
F30		5:1	344 mm	41 ltrs/min ●■	9.1 kgs	9.8 kgs	0.8 cuft
J30		9:1	280 mm	19 ltrs/min ●■	7.8 kgs	8.5 kgs	0.7 cuft
L30		15:1		11 ltrs/min ●■	7.5 kgs	8.2 kgs	

- In free delivery (no hose, gun), at 6 kg/cm<sup>2</sup>
- Using motor oil SAE 30 at room temperature 25 °C

# HG-33

## Hand-operated Grease Lubricator 手動黃油機

Mobile type, capacity 30 kgs or for standard  
16 kgs pail  
移動式-容量30公斤或16公斤油桶用

### Features :

- 6 feet High Pressure Grease Hose, allows access to hard to reach applications.
- 485901 Container assembly I.D. 322mm.
- 485912 Trolley with 2 wheels, allows greasing unit easily moved to applications.
- Applicable grease range NLGI #00 - 2.

We have optional 132922 Follower Plate w/rubber rim prevents air pocket, helps priming grease and wipes container clean.

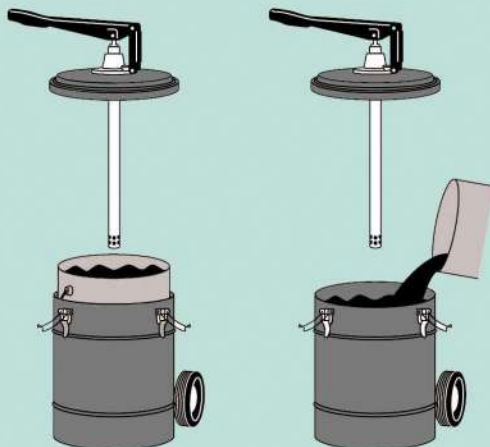
### 特點 :

- (1) 配備6呎油管。
- (2) 桶內徑為32.2公分。
- (3) 2輪手推車，方便移動。
- (4) 適用NLGI#00-02號黃油。

※另有132922膠邊壓板可選購。

### Instructions :

使用示意圖 :



Model No. 型號	HG-33	
Consisting of 產品標準配備	133600	Handle 黃油幫浦
	132731	Handle 把手
	132711-6	Grease Hose 黃油管6呎
	485901	Container Assembly 桶(內徑32.2公分)
	232610	Handle Assembly 壓桿
	485912	Trolley Assembly 底座

Model No. 型號	Container Size 容量	Delivery Rate 輸出量	Shipping N.W. 淨重	Shipping G.W. 毛重	Shipping Measurement 材積
HG-33	30 kgs or 16 kgs original pail	4 g/cycle	10.1 kgs	11.8 kgs	4.0 cuft

# HG-32 | HG-31

## Hand-operated Grease Lubricator 手動黃油機

HG-32 Mobile type, capacity 19 kgs  
移動式-容量19公斤

HG-31 Portable type, for standard 16-20 kgs pail  
手提式-16~20公斤油桶用

### Features :

- Applicable grease range NLGI #00 - 2.

### HG-32 :

- 132901 Container assembly I.D. 280mm with pedal for easily operation.
- 132912 Trolley with 2 wheels, allows greasing unit easily moved to applications.

We have optional 132921 follower plate prevents air pocket, helps priming grease.

### HG-31 :

- 131903 Drum Cover prevents contamination I.D. 305mm.
- 132104 Handle allows carry greasing unit easily.

We have optional 132921 Follower Plate and 132922 Follower Plate w/rubber rim prevents air pocket, helps priming grease and wipes container clean.

### 特點 :

適用NLGI#00-02號黃油。

### HG-32 :

- (1) 桶內徑為28公分，附加腳踏板設計，方便操作。
- (2) 2輪手推車，輕鬆移動黃油機。

### HG-31 :

- (1) 附桶蓋避免油脂受到汙染，內徑為30.5公分。
- (2) 提把設計，方便提取。

※另有 132921 壓版與 132922 膠邊壓板可選購。

Model No. 型號	HG-32	HG-31
	132600 Grease Pump 黃油幫浦	131600 Grease Pump 黃油幫浦
Cosisting of 產品標準配備	132731 Handle 把手	
	132711-6 Grease Hose 黃油管6呎	
	232610 Handle Assembly 壓桿	
	132901 Container Assembly 桶(內徑28公分)	131903 Drum Cover 桶蓋(內徑30.5公分)
	132912 Trolley Assembly 底座	132104 Handle 提把

Model No. 型號	Container Size 容量	Delivery Rate 輸出量	Shipping N.W. 淨重	Shipping G.W. 毛重	Shipping Measurement 材積
HG-32	19 kgs	4 g/cycle	8.6 kgs	10.1 kgs	2.5 cuft
HG-31	16-20 kgs		4.9 kgs	5.6 kgs	0.7 cuft

# HG-301 | HG-30

## Hand-operated Grease Lubricator 手動黃油機

**HG-301** Portable type, capacity 13 kgs  
手提式-容量13公斤

**HG-30** Portable type, capacity 8 kgs  
手提式-容量8公斤

### Features :

- 6 feet High Pressure Grease Hose, allows access to hard to reach applications.
- 132731 Grease Handle.
- 133903 Cover with pipe fixture for placing Grease Handle after use.
- Applicable grease range NLGI #00 - 2.

### HG-301 :

- 133901 Container assembly I.D. 220mm with pedal for easily operation.

### HG-30 :

- 130901 Container assembly I.D. 220mm with pedal for easily operation.

We have optional 133921 follower plate prevents air pocket, helps priming grease.

### 特點 :

- (1) 配備6呎油管。
- (2) 桶蓋附有孔座可放置出油把手。
- (3) 桶內徑為22公分，附加腳踏板設計，方便操作。
- (4) 適用NLGI#00-02號黃油。

※另有 133921 壓板可選購。

Model No. 型號	HG-301	HG-30
	133600 Grease Pump 黃油幫浦	130600 Grease Pump 黃油幫浦
Cosisting of 產品標準配備	132731 Handle 出油握把	
	132711-6 Grease Hose 黃油管6呎	
	232610 Handle Assembly 壓桿	
	133901 Container Assembly 桶(內徑22公分)	130901 Container Assembly 桶(內徑22公分)

Model No. 型號	Container Size 容量	Delivery Rate 輸出量	Shipping N.W. 淨重	Shipping G.W. 毛重	Shipping Measurement 材積
<b>HG-301</b>	13 kgs	4 g/cycle	6.2 kgs	7.2 kgs	1.9 cuft
<b>HG-30</b>	8 kgs		5.2 kgs	6.0 kgs	1.4 cuft





## HO-32

### Hand-operated Oil Lubricator 手動機油機

Mobile type, capacity 20 ltrs/5 gals  
移動式-容量20公升(5加侖)

#### Features :

- 6 feet PVC Hose, allows access to hard to reach applications.
- 142731 Oil Handle.
- 132903 Cover with pipe fixture for placing Oil Handle after use.
- 142901 Container assembly I.D. 280mm with pedal for easily operation.
- 132912 Trolley with 2 wheels, allows oiling unit easily moved to applications.
- Applicable oil range SAE 00 - 40.

#### 特點：

- (1) 輸出量：每次65cc。
- (2) 配備6呎PVC軟管。
- (3) 桶內徑為28公分，附加腳踏板設計，方便操作。
- (4) 2輪手推車，輕鬆移動機油機。
- (5) 適用SAE 00-40 機油。

Model No. 型號	HO-32	
Cosisting of 產品標準配備	142600	Oil Pump 機油幫浦
	142731	Handle 握把
	142711-6	Oil Hose 機油管6呎
	142901	Container Assembly 桶(內徑28公分)
	242610	Handle Assembly 壓桿
	132912	Trolley Assembly 推車

Model No. 型號	Container Size 容量	Delivery Rate 輸出量	Shipping N.W. 淨重	Shipping G.W. 毛重	Shipping Measurement 材積
HO-32	20 ltrs	65 cc/cycle	7.8 kgs	9.3 kgs	2.5 cuft



Grease Gun / Grease Gun Parts 黃油槍 / 黃油槍零件



- 40731 High Pressure Grease Gun** - consisting of 40710 & 40721. 1/4" PT19(F) inlet.  
黃油槍 - 包含40710、40721；1/4" PT19(F)入口。
- 40710 High Pressure Control Valve** - 1/8" PT28(F) inlet.  
黃油槍 - 1/8" PT28(F)入口。
- 40721 Z type Swivel** - 1/4" PT19(F) inlet x 1/8" PT28(M) outlet.  
Z型活動彎頭 - 1/4" PT19(F)入口 x 1/8" PT28(M)出口。
- 40725 L type Swivel** - 1/4" PT19(F) inlet x 1/8" PT28(M) outlet.  
L型活動彎頭 - 1/4" PT19(F)入口 x 1/8" PT28(M)出口。
- 40728 Straight type Swivel** - 1/4" PT19(F) inlet x 1/8" PT28(M) outlet.  
一字型活動彎頭 - 1/4" PT19(F)入口 x 1/8" PT28(M)出口。
- 40729 Straight type Swivel** - 1/4" PT19(F) inlet x 1/4" PT19(F) outlet.  
一字型活動彎頭 - 1/4" PT19(F)入口 x 1/4" PT19(F)出口。

Grease Gun Parts / Lubricator Accessories 黃油槍零件 / 注油機零配件



- 40703 Standard Hydraulic Coupler** - w/3 jaws. 1/8" PT28(F) inlet. 18mm O.D.  
注油頭 - 3爪；1/8" PT28(F)入口。(外徑1.8公分)
- 40704 Standard Hydraulic Coupler** - w/4 jaws. 1/8" PT28(F) inlet. 14mm O.D.  
注油頭 - 4爪；1/8" PT28(F)入口。(外徑1.4公分)
- 40713 Needle Adapter** - 1/8" PT28(F) inlet.  
尖形注油頭 - 1/8" PT28(F)入口。
- 40771 Lock Sleeve** - 1/8" PT28(F) outlet.  
套管注油頭 - 1/8" PT28(F)出口。
- 40842 Air Pressure Regulator with Gauge** - 3/8" PT19(F) inlet x 3/8" PT19(F) outlet.  
調壓器 - 3/8" PT19(F)入口 x 3/8" PT19(F)出口。
- 40651 Strainer** - for inlet of grease pump displacement tube.  
過濾網 - 用於黃油幫浦抽油管。
- 132731 Grease Handle Coupler** - 1/4" PT19(F) inlet.  
黃油握把 - 1/4" PT19(F)入口。
- 132711-1 Grease Hose 1 feet** - 1/8" PT28(M) inlet x 1/8" PT28(M) outlet.  
黃油軟管1呎 - 1/8" PT28(M)入口 x 1/8" PT28(M)出口。



Oil Gun 機油槍



940735



940735M



007



007M

**940735** Oil Gun - 3/8" PT19(F) inlet.

機油槍 - 3/8" PT19(F)入口。

**940735M** Oil Gun with Meter - 3/8" PT19(F) inlet.

機油槍(附流量計) - 3/8" PT19(F)入口。

**007** Oil Gun - 1/2" PT14(F) inlet.

機油槍 - 1/2" PT14(F)入口。

**007M** Oil Gun with Meter - 1/2" PT14(F) inlet.

機油槍(附流量計) - 1/2" PT14(F)入口。

Lubricator Accessories 注油機零配件



20130905  
40530905



20180906



40980906  
41580906



20180840

**20130905** Wall Mount Bracket - to accept A30 & B30 stubby pumps.

壁掛支架 - 適用A30、B30短幫浦。

**40530905** Wall Mount Bracket - to accept F30, J30 & L30 stubby pumps.

壁掛支架 - 適用F30、J30、L30短幫浦。

**20180906** Bung Opening - 2" PT11(M). used with A80, B80 & F80 pumps for 200 ltrs original drum and A30, B30 & F30 stubby pumps.

管束 - 2" PT11(M), 適用200公升桶裝A80、B80、F80幫浦以及A30、B30、F30短幫浦。

**40980906** Bung Opening - 2" PT11(M). used with J80 pumps for 200 ltrs original drum and J30 stubby pumps.

管束 - 2" PT11(M), 適用200公升桶裝J80幫浦以及J30短幫浦。

**41580906** Bung Opening - 2" PT11(M). used with L80 pumps for 200 ltrs original drum and L30 stubby pumps.

管束 - 2" PT11(M), 適用200公升桶裝L80幫浦以及L30短幫浦。

**20180840** Air Speed Controller - 1/4" PT19(F) inlet x 1/4" PT19(F) outlet.

速度控制器 - 1/4" PT19(F)入口 x 1/4" PT19(F)出口。

Trolley / Dolly 推車 / 底座



83923



67913  
47913

**83923** Trolley Assembly - for 50 gallons original drum.

推車 - 50加侖桶用。

**67913** Band-type Dolly - for 16 gallons original drum.

底座 - 16加侖桶用。

**47913** Band-type Dolly - for 5 gallons original straight pail.

底座 - 5加侖桶用。



8190506 6190306



81905 61903



3190306

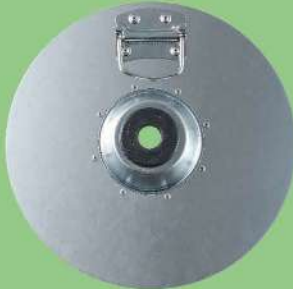


31903

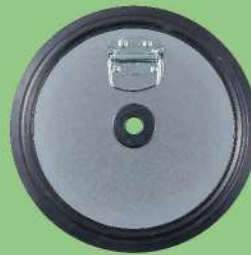
DRUM COVER SPECIFICATION

桶蓋型號規格表

Model No. 型號	8190506	6190306	81905	61903	3190306	31903
Types of 類型	Drum Cover, center in 2"PT 桶蓋-可微調抽油管長度		Drum Cover 桶蓋		Drum Cover, center in 2"PT 桶蓋-可微調抽油管長度	Drum Cover 桶蓋
I.D. 內徑	610 mm	381 mm	610 mm	381 mm	305 mm	
Appliance 適用規格	standard 180 kgs drum 標準180公斤油桶	standard 55 kgs drum 標準55公斤油桶	standard 180 kgs drum 標準180公斤油桶	standard 55 kgs drum 標準55公斤油桶	16-20 kgs original drum 16-20公斤原裝油桶	



81921 61921



81922 61922  
41922 132922



132921 133921

FOLLOWER PLATE SPECIFICATION

壓板型號規格表

Model No. 型號	81921	61921	81922	61922	41922	132922	132921	133921
Types of 類型	Follower Plate 壓板		Follower Plate w/rubber rim 膠邊壓板			Follower Plate for hand-operated series 壓板-手動系列適用		
O.D. 外徑	556 mm	343 mm	585 mm	375 mm	297 mm	275 mm	210 mm	
Appliance 適用規格	standard 180 kgs drum 標準180公斤油桶	standard 55 kgs drum 標準55公斤油桶	standard 180 kgs drum 標準180公斤油桶	standard 55 kgs drum 標準55公斤油桶	16-20 kgs original drum 16-20公斤原裝油桶	HG-31/HG-32 drum 適用HG-31/ HG-32桶	HG-30/HG-301 drum 適用HG-30/ HG-301桶	

