

CODE	項目	Unit	KV-520	KV-720
X, Y, Z-axis travel range	行程範圍(X/Y/Z)	mm	520 / 420 / 500	720 / 420 / 500
X, Y, Z-axis rapid traverse rate	快移速度(X/Y/Z)	m/min	48 / 48 / 48	48 / 48 / 48
Table size	工作台尺寸	mm	650 x 420	850 x 420
Max. table load	工作台最大負荷	kg	200	350
Distance from spindle nose to table	主軸鼻端到工作台距離	mm	150~650	150~650
T-slot size	T型槽尺寸	mm	14	14
Spindle taper	主軸刀把型式		BT-40(HSK-E40)(HSK-A63)	BT-40(HSK-E40)(HSK-A63)
Pull stud of tool holder	主軸拉拴型式		MAS403-P40T-1(45°)	MAS403-P40T-1(45°)
Max. spindle speed	主軸轉速	rpm	15000(30000)(24000)	15000(30000)(24000)
Spindle motor power output (Rated)	主軸馬達額定輸出功率	KW	8.4(4.6)(18)	8.4(4.6)(18)
Spindle motor power output (Max.)	主軸馬達最大輸出功率	KW	32(5.3)(23)	32(5.3)(23)
Spindle motor torque output (Rated)	主軸馬達額定輸出扭力	Nm	27(4.4)(28)	27(4.4)(28)
Spindle motor torque output (Max.)	主軸馬達最大輸出扭力	Nm	100(5.1)(36)	100(5.1)(36)
Magazine type	刀庫型式		圓盤式/刀臂式換刀 Disk / Arm	圓盤式/刀臂式換刀 Disk / Arm
Magazine pocket number	刀具數量	pcs	24(20)(30)	24(20)(30)
Max. tool diameter (Adj. tool)	最大刀具直徑(相鄰刀)	mm	80(55)	80(55)
Max. tool length (from spindle nose)	最大刀具長度	mm	250(200)	250(200)
Max. tool weight	最大刀具重量	kg	8(4)	8(4)
Air pressure required	空壓需求	kg/cm ²	6	6
Machine weight	機械重量	kg	4500	5000
Machine dimensions (LxWxH)	機械外觀尺寸(長x寬x高)	mm	2650 x 2150 x 2800	2650 x 2350 x 2800

- AS the manufacturer constantly improves the machine specifications and design characteristics, above specifications are subject to change without notice.
- The data shown in parenthesis are optional.
- 本公司對產品規格、設計特性均不斷研究改進，上述規格若有變更，恕不另行通知。
- 規格表內括弧內容為選購附件。

Standard Equipment	標準配備	Optional Equipment	選購配備
Spindle oil cooler	主軸油冷單元	HSK A63, 24,000 rpm built-in type spindle	HSK A63 24000rpm 內藏式高速主軸
Spindle air barrier	主軸鼻端氣幕防屑裝置	HSK E40, 30,000 rpm built-in type spindle	HSK E40 30000rpm 內藏式高速主軸
Spindle air blast	主軸換刀吹氣裝置	BT-40, disk/arm type 30 tools ATC	BT-40 圓盤式/刀臂換刀 30把刀
BT-40, 15,000 rpm direct drive spindle	BT-40 15000rpm 直結式主軸	HSK A63, disk/arm type 24 tools ATC	HSK A63 圓盤式/刀臂換刀 24把刀
BT-40, disk/arm type 24 tools ATC	BT-40 圓盤式/刀臂換刀 24把刀	HSK A63, disk/arm type 30 tools ATC	HSK A63 圓盤式/刀臂換刀 30把刀
Coolant system	主軸切削冷卻系統	HSK E40, disk/arm type 20 tools ATC	HSK E40 圓盤式/刀臂換刀 20把刀
Chip bin	集水箱	Coolant through spindle (CTS)	主軸中心出水(CTS)
Chip filter tank	集屑過濾箱	Oil mist cooling device	油霧冷卻裝置
Machine cabin side flushing	外罩側沖水裝置	Chain type chip conveyor	履帶式鐵屑輸送機
Heat exchanger for electrical cabinet	電氣箱熱交換器	Chip cart	集屑車
MPG handwheel	MPG 手輪	Oil coolant separator	油水分離機
Three-color indication lamp (red, yellow, green)	三色指示燈(紅,黃,綠)	Workpiece measuring system	機內工件測量系統
Work light	工作燈	Tool measuring system	機內刀具測量系統
Automatic lubrication system	自動潤滑系統	X, Y, Z-axis linear scale	X.Y.Z.軸光學尺
Fully enclosed splash guard	全閉式防屑鍍金護罩	High accuracy air filtering device	高精度空壓過濾裝置
Pneumatic system	空壓系統	Air conditioner for electrical cabinet	電氣箱空調冷氣
Leveling bolts and blocks	水平調整螺絲與墊片	Transformer	變壓器
Operation manual	操作說明書	Voltage stabilizer	穩壓器
		Coolant gun	水槍
		Oil mist collector	油霧回收裝置

KOVA

協銳精密工業股份有限公司
KOVA PRECISION INDUSTRIAL CO., LTD.

台灣 41278 台中市大里區仁化工十二路 27 號
No.27, Renhuagong 12th Rd, Dali Dist., Taichung City 41278, Taiwan.
TEL: 886-4-2496 6000 FAX: 886-4-2496 8000
E-mail: info@kova.com.tw



KV-520

KV-720

High Speed, High Accuracy Machining Centers
高速、高精度 加工中心機

KV-520/720 Vertical High Speed Machining Center 立式高速加工機

The machine combines the rigidity of machining center and the speed and response of tapping center. It's your best choice in vertical machining center.

此機種結合了加工中心機的高剛性，數控鑽孔攻牙中心機的快速與機動性，為立式加工中心機的最佳選擇。



Various optional equipment are available to suit flexible machining requirements.

各項種類不同功能的選配件，提供更多加工需求的選擇。



Three axes are available to equip with linear scales to meet the requirement of higher machining accuracy.

三軸可選配光學尺，達到更精準的加工需求。

Arm Type Magazine

The magazine employs gear-cam, featuring fast tool change and high positioning accuracy. Tool selection method is bi-directional and random.

刀臂式刀庫

採用滾子齒輪凸輪，換刀速度快、定位精度佳，選刀方式為雙向任意式選刀。

High Efficiency Feed System

Three axes are mounted with high precision roller type linear ways, providing high feed rates up to 48 m/min. In addition, the best machining accuracy and reduced moving time can be achieved.

高效率進給系統

三軸向採用高精度滾柱線軌，提供48 m/min的高進給與高速度，保證最佳加工精度與最少的位移時間。

Lubrication System

The lubrication system employs a proportional oil distributor to ensure oil is properly delivered to each mechanism. A micro-switch is applied for detecting if lubrication oil flows to feed system or not, which may lead to increased stability and service life of the axes.

潤滑系統

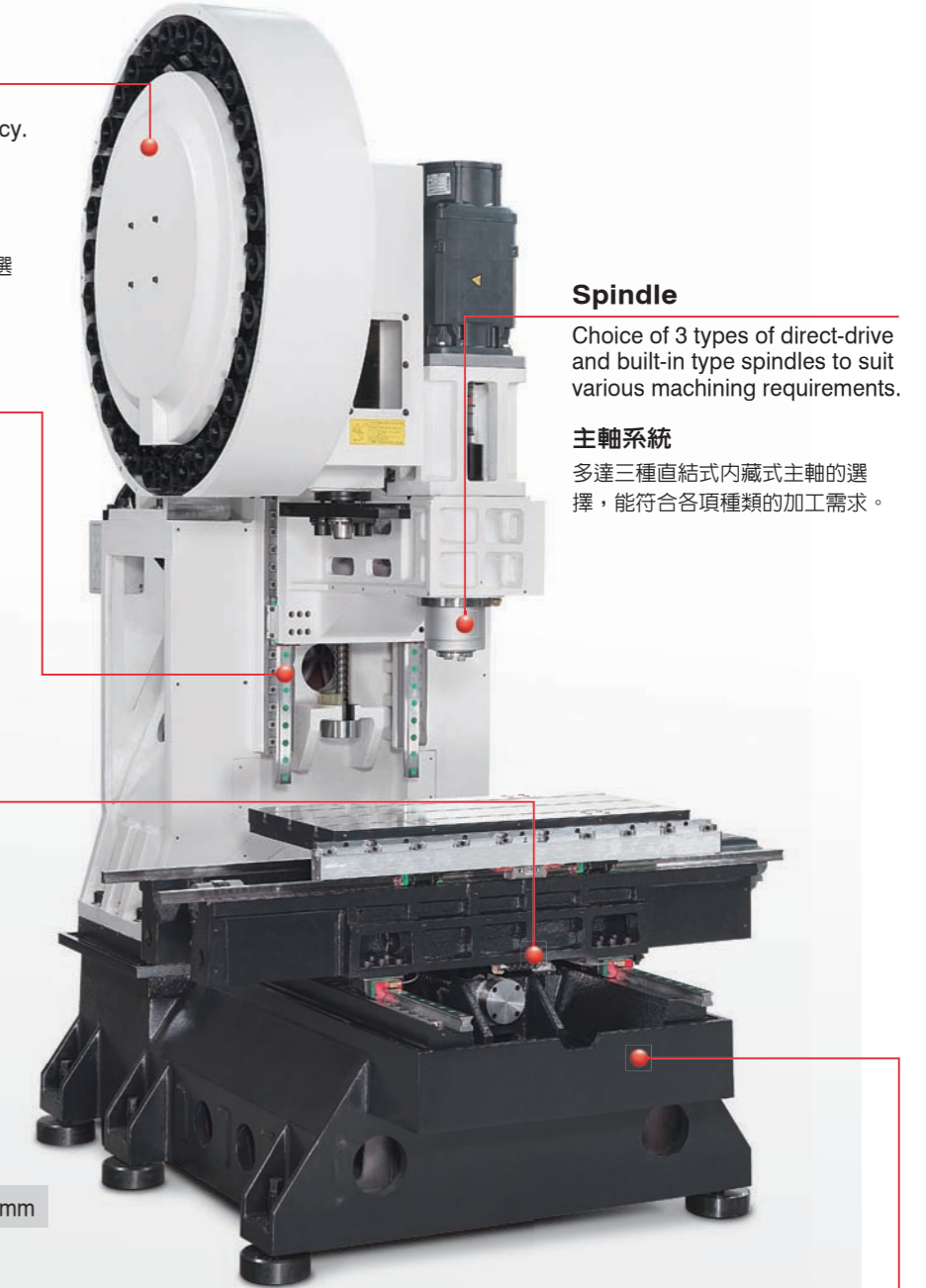
採用比例式潤滑油分配器，確保各單元的油量需求，並使用微動開關感測潤滑油有無進入進給系統，保證軸向系統穩定耐久。

Spindle

Choice of 3 types of direct-drive and built-in type spindles to suit various machining requirements.

主軸系統

多達三種直結式內藏式主軸的選擇，能符合各項種類的加工需求。



Rigid Construction

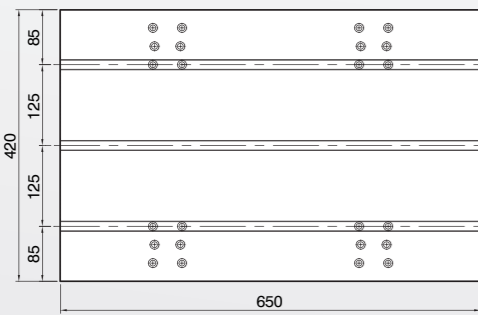
All major structural parts are manufactured from Meehanite cast iron with maximum material stability annealed and vibratory stress relieved. Finite Element Analysis is also conducted to optimise the machine structure and structural parts ratio. This results in more stable support and superior force distribution during cutting.

高剛性結構

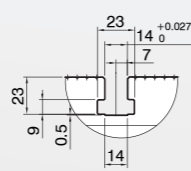
整機採用米漢納鑄鐵鑄造，材料穩定，並經退火與振動內應力消除，並採用有限元素分析達到最佳化的強健結構與比例，使加工時擁有最穩定的支撐與完美的力流線。

KV-520 TABLE 工作台

Unit: mm

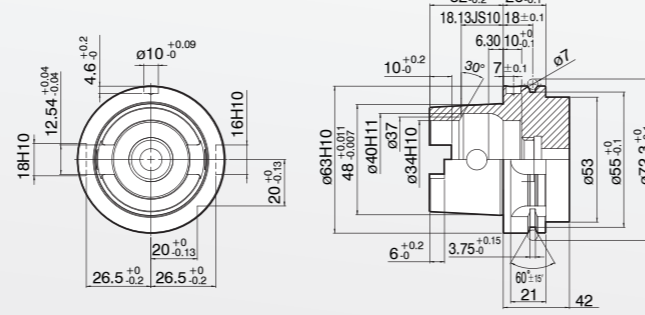


T-slot T型槽



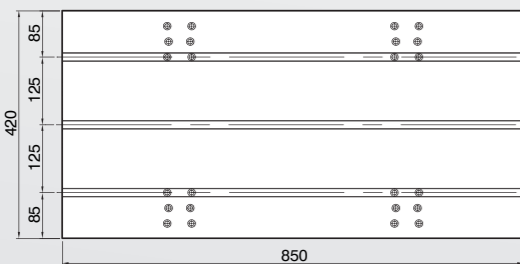
HSK-A63

Unit: mm

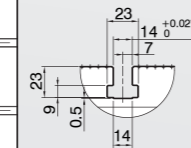


KV-720 TABLE 工作台

Unit: mm

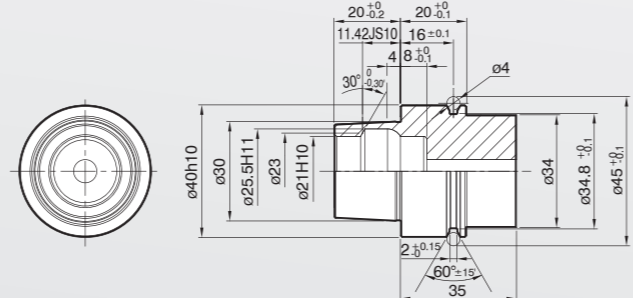


T-slot T型槽



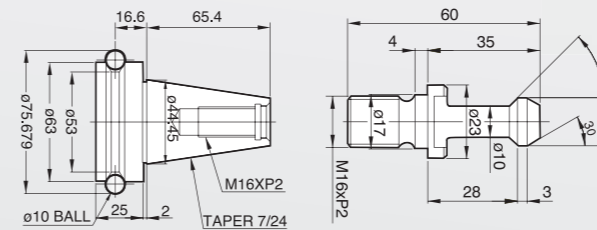
HSK-E40

Unit: mm



BT-40

Unit: mm



• Machine specifications and dimensions shown in this catalog are subject to change without prior notice.

• 產品規格、尺寸若有變更，恕不另行通知。