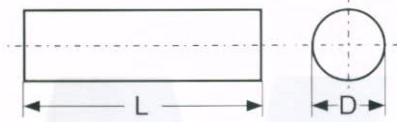
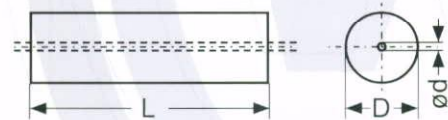


### 實心圓棒 Solid Carbide Rods, raw



直徑 D (mm)	公差 Tol	長度 L +10 (mm)	公差 Tol	材質
1.15	+0.06	340	+5	KFM 308
				KFM 606
1.30	+0.06	340	+5	KFM 308
				KFM 606
1.50	+0.06	340	+5	KFM 308
				KFM 606
3.25	+0.10	330	+5	KFM 407
		400		
		38.3	+0.25	
		38.5	+0.25	
		40.0	±0.10	

### 單直孔圓棒 Rods with Central Hole



直徑 D (mm)	公差 Tol	孔徑 Hole Ø	公差 Tol	長度 L +10 (mm)
3.3	+0.3	0.05	±0.02	310/330
3.3	+0.3	0.10	±0.03	310/330
4.3	+0.3	0.25	±0.05	310/330
6.3	+0.3	0.35	±0.05	310/330