

MD, MD-M 3-JAW AIR CHUCKS FIXTURE(SINGLE PISTON)

內藏式前鎖型 三爪氣壓夾盤 (單活塞)

新產品
NEW
專利產品
Patent Protected

內藏式前鎖型氣壓夾盤特點:

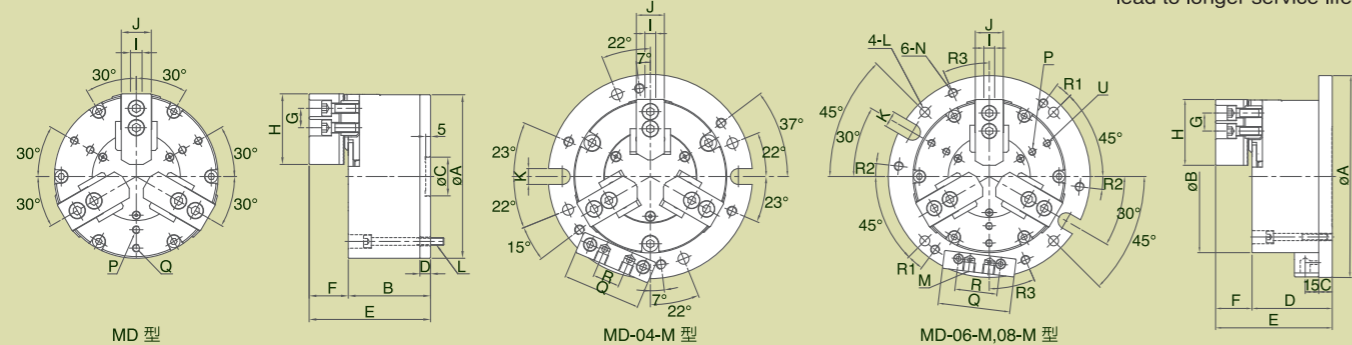
- 1.前鎖型設計, 安裝便利、節省空間。
- 2.可搭配治具板, 安排模組化並列, 配合量產需求。
- 3.汽缸防銹處理, 更符合加工環境需求。
- 4.完整防塵設計, 提升夾盤使用壽命及精度。



Air Chuck Fixture Special Features:

- 1.Front-lock design, easy installation & save a space.
- 2.Available on multi-plate for mass production.
- 3.Rust-proof for pneumatic cylinder.
- 4.Dusts-proof & water-proof design to maintain its accuracy and lead to longer service life.

尺寸圖 » Dimensions



MFR, MFR-M 3-JAW AIR CHUCKS FIXTURE(DOUBLE PISTON)

內藏式前鎖型 三爪氣壓夾盤 (雙活塞)

新產品
NEW
專利產品
Patent Protected

內藏式前鎖型氣壓夾盤特點:

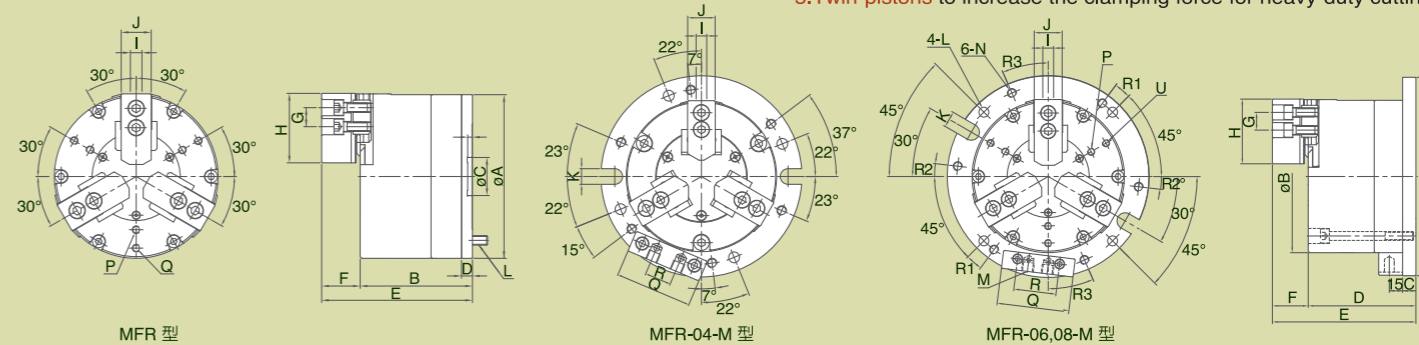
- 1.前鎖型設計, 安裝便利、節省空間。
- 2.可搭配治具板, 安排模組化並列, 配合量產需求。
- 3.汽缸防銹處理, 更符合加工環境需求。
- 4.完整防塵設計, 提升夾盤使用壽命及精度。
- 5.雙活塞結構大幅提升夾持力, 適合重切銑加工。



Air Chuck Fixture Special Features:

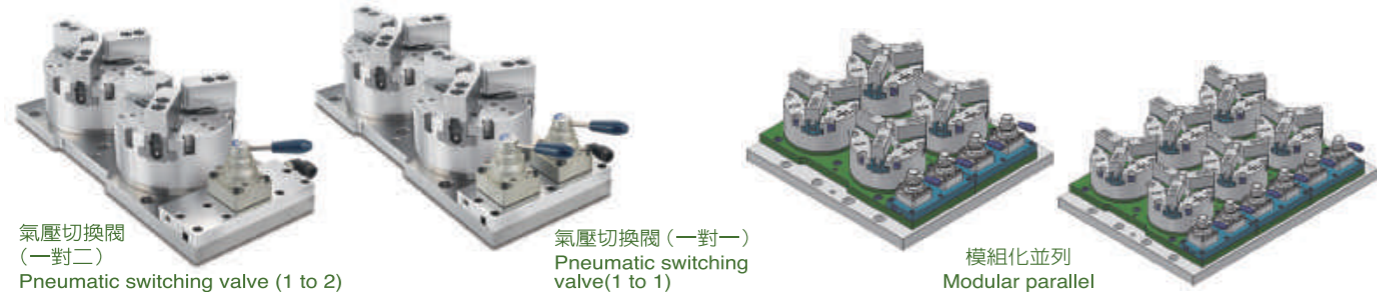
- 1.Front-lock design, easy installation & save a space.
- 2.Available on multi-plate for mass production.
- 3.Rust-proof for pneumatic cylinder.
- 4.Dusts-proof & water-proof design to maintain its accuracy and lead to longer service life.
- 5.Twin-pistons to increase the clamping force for heavy-duty cutting.

尺寸圖 » Dimensions



模組化治具氣壓夾盤 » FIXTURE CHUCKS MODLE

詳細資訊請洽營業部



氣壓切換閥
(一對二)
Pneumatic switching valve (1 to 2)

氣壓切換閥 (一對一)
Pneumatic switching valve(1 to 1)

模組化並列
Modular parallel

模組化治具氣壓夾盤 » FIXTURE CHUCKS MODLE

詳細資訊請洽營業部



氣壓切換閥
(一對二)
Pneumatic switching valve (1 to 2)

氣壓切換閥 (一對一)
Pneumatic switching valve(1 to 1)

模組化並列
Modular parallel

規格表 » Specifications

單位/UNIT:mm

型式/規格 MODEL / SPEC.	A	B	C	D	E	F	G	H	I	J	K	R	R1	R2	R3
MD-04	125	78.5	40	11.5	105.2	26.7	14	49.5	10	23	--	--	--	--	--
MD-06	172	90	40	11.5	130.4	40.4	20	73	12	31	--	--	--	--	--
MD-08	210	108.5	40	14	150.9	42.4	25	95	14	35	--	--	--	--	--
MD-04-M	167	125	15	82	108.7	26.7	14	49.5	10	23	13	47	--	--	--
MD-06-M	224	172	15	93.5	133.9	40.4	20	73	12	31	18	47	8.5°	6.5°	23.5°
MD-08-M	265	210	20	114.5	156.9	42.4	25	95	14	35	18	47	9.5°	5.5°	24.5°
型式/規格 MODEL / SPEC.	L			M			N			P			Q		
MD-04	3-M8x1.25P(PCDø110)			--			--			--			--		
MD-06	6-M10x1.5P(PCDø155)			--			--			3-M8x1.25P(PCDø110)			3-M8x1.25P(PCDø148)		
MD-08	6-M12x1.75P(PCDø185)			--			--			3-M10x1.5P(PCDø136)			3-M10x1.5P(PCDø186)		
MD-04-M	ø9(PCDø145)			2-PT1/8"			M8x1.25P(PCDø145)			--			64		
MD-06-M	ø11(PCDø202)			2-PT1/4"			M10x1.5P(PCDø202)			3-M8x1.25P(PCDø110)			80		
MD-08-M	ø11(PCDø243)			2-PT1/4"			M10x1.5P(PCDø243)			3-M10x1.5P(PCDø136)			80		
型式/規格 MODEL / SPEC.	U	活塞面積 Piston Area (cm ²)		柱塞行程 Plunger Stroke (mm)	爪行程(直徑) Jaw Stroke(Diameter) (mm)	夾持範圍 Gripping Range	空壓夾持力 Gripping Force At Air Pressure 7 kgf/cm ² (0.7MPa) kgf (kN)								
MD-04	--	67		10	3.5	ø16~ø125	1800 (17.6)								
MD-06	--	136		12	4.2	ø24~ø172	3700 (36.2)								
MD-08	--	191		18	6.3	ø25~ø210	5150 (50.5)								
MD-04-M	--	67		10	3.5	ø16~ø125	1800 (17.4)								
MD-06-M	3-M8x1.25P(PCDø148)	136		12	4.2	ø24~ø172	3700 (36.2)								
MD-08-M	3-M10x1.5P(PCDø186)	191		18	6.3	ø25~ø210	5150 (50.5)								

規格表 » Specifications

單位/UNIT:mm

型式/規格 MODEL / SPEC.	A	B	C	D	E	F	G	H	I	J	K	R	R1	R2	R3
MFR-04	125	105	40	11.5	131.7	26.7	14	49.5	10	23	--	--	--	--	--
MFR-06	172	118	40	11.5	158.4	40.4	20	73	12	31	--	--	--	--	--
MFR-08	210	145	40	14	187.4	42.4	25	95	14	35	--	--	--	--	--
MFR-04-M	167	125	15	108.5	135.2	26.7	14	49.5	10	23	13	47	--	--	--
MFR-06-M	224	172	15	121.5	161.9	40.4	20	73	12	31	18	47	8.5°	6.5°	23.5°
MFR-08-M	265	210	20	151	193.4	42.4	25	95	14	35	18	47	9.5°	5.5°	24.5°
型式/規格 MODEL / SPEC.	L			M			N			P			Q		
MFR-04	3-M8x1.25P(PCDø110)			--			--			--			--		
MFR-06	6-M10x1.5P(PCDø155)			--			--			3-M8x1.25P(PCDø110)			3-M8x1.25P(PCDø148)		
MFR-08	6-M12x1.5P(PCDø185)			--			--			3-M10x1.5P(PCDø136)			3-M10x1.5P(PCDø186)		
MFR-04-M	ø9(PCDø145)			2-PT1/8"			M8x1.25P(PCDø145)			--			64		
MFR-06-M	ø11(PCDø202)			2-PT1/4"			M10x1.5P(PCDø202)			3-M8x1.25P(PCDø110)			80		
MFR-08-M	ø11(PCDø243)			2-PT1/4"			M10x1.5P(PCDø243)			3-M10x1.5P(PCDø136)			80		
型式/規格 MODEL / SPEC.	U	活塞面積 Piston Area (cm ²)		柱塞行程 Plunger Stroke (mm)	爪行程(直徑) Jaw Stroke(Diameter) (mm)	夾持範圍 Gripping Range	空壓夾持力 Gripping Force At Air Pressure 7 kgf/cm ² (0.7MPa) kgf (kN)								
MFR-04	--	133		9	3.8	ø16~ø125	2980 (29.2)								
MFR-06	--	270		10	5.3	ø24~ø172	5280 (51.7)								
MFR-08	--	380		16	7.4	ø25~ø210	7800 (76.4)								
MFR-04-M	--	133		9	3.8	ø16~ø125	2980 (29.2)								
MFR-06-M	3-M8x1.25P(PCDø148)	270		10	5.3	ø24~ø172	5280 (51.7)								
MFR-08-M	3-M10x1.5P(PCDø186)	380		16	7.4	ø25~ø210	7800 (76.4)								

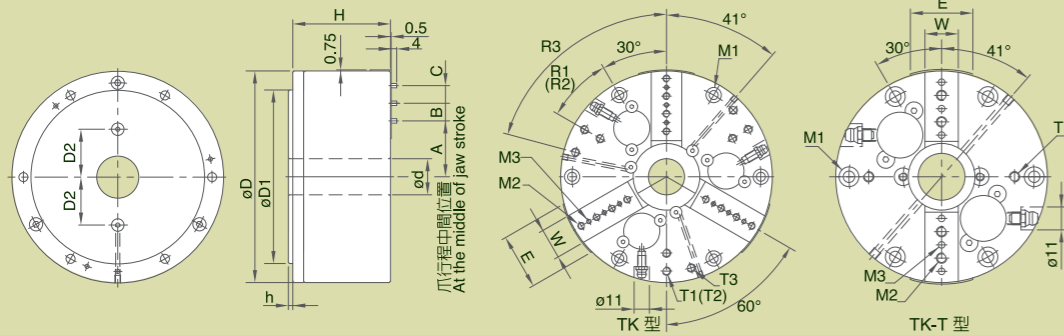
超精密氣壓夾頭

1. 預設治具孔及預留自動潤滑管道：爪殼預設治具孔，有額外固定需要時不須再追加加工；且預留自動潤滑管道，可與自動潤滑裝置連結。
2. 內藏式汽缸：汽缸與夾盤直結設計，確保作動及夾持的穩定性。
3. 生爪精密定位：設有定位銷使生爪在重複拆裝時仍保持良好的定位精度。
4. 超高精度夾持提高工作效率：夾持工件的同軸度及重覆夾持精度可達 μ 級，簡化操作，實現高效率的精密加工。



1. Pre-machined tapped holes and lubrication path: There are tapped holes for fixing jigs, thus, additional screw machining is not necessary, and pre-machined lubrication path can connect to auto-lubrication unit to lubricate the chuck automatically.
2. Built-in Cylinder: Connect cylinder directly to the chuck for stable gripping.
3. Precise soft jaw positioning: It's easy to remount soft jaw to the correct position with dowel pins on it.
4. High gripping precision brings better quality and efficiency: Good coaxiality and repeatability of gripping are able to achieve the accuracy of " μ degree" machining processes can be simplified or shortened to make high precision machining with high efficiency come true.

尺寸圖 » Dimensions



本產品精密度可達 μ 級

This product reaches the repeatability of " μ degree"

應用範例 » Operation Example



單位/UNIT:mm

規格表 » Specifications

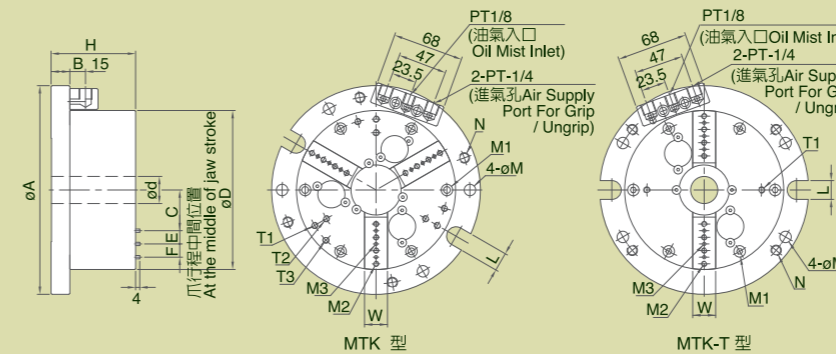
型式/規格 MODEL / SPEC.	A	B	C	D	E	D1	d (H7)	D2	H	h	W	M1
TK-04	20.75	12.7	12.7	101.6	30	82.55	18	25	70.3	3.2	16	6-M5x0.8P(PCD ϕ 88.9)
TK-06	39.75	12.7	12.7	152.4	40	124.97	26	34.5	70.3	3.2	22	6-M6x1P(PCD ϕ 135.89)
TK-08	65.75	25.4	--	203.2	45	167.64	50	50	99.5	7.0	25	6-M10x1.5P(PCD ϕ 182.88)
TK-04T	20.75	12.7	12.7	101.6	30	82.55	18	25	70.3	3.2	16	6-M5x0.8P(PCD ϕ 88.9)
TK-06T	39.75	12.7	12.7	152.4	40	124.97	26	34.5	70.3	3.2	22	6-M6x1P(PCD ϕ 135.89)
TK-08T	65.75	25.4	--	203.2	45	167.64	50	50	99.5	7.0	25	6-M10x1.5P(PCD ϕ 182.88)
型式/規格 MODEL / SPEC.	M2		M3		T1		T2		T3		R1	
TK-04	6-M5x0.8P		9- ϕ 3.18		3-M5x0.8P(PCD ϕ 88.9)		--		--		30°	
TK-06	12-M5x0.8P		9- ϕ 3.18		3-M6x1P(PCD ϕ 135.89)		3-M6x1P(PCD ϕ 110)		3-M6x1P(PCD ϕ 135.89)		30°	
TK-08	6-M10x1.5P		6- ϕ 6.36		3-M8x1.25P(PCD ϕ 182.88)		3-M8x1.25P(PCD ϕ 150)		3-M8x1.25P(PCD ϕ 100)		30°	
TK-04T	4-M5x0.8P		6- ϕ 3.18		2-M5x0.8P(PCD ϕ 70)		--		--		--	
TK-06T	8-M5x0.8P		6- ϕ 3.18		2-M6x1P(PCD ϕ 110)		--		--		--	
TK-08T	4-M10x1.5P		4- ϕ 6.36		2-M8x1.25P(PCD ϕ 150)		--		--		--	
型式/規格 MODEL / SPEC.	R2	R3	爪行程〔直徑〕 Jaw Stroke [Diameter] (mm)		空壓夾持力 Gripping Force At Air Pressure 7kgf/cm ² (0.7MPa) kgf (kN)		最高迴轉速 Max. Speed r.p.m.(min ⁻¹)		淨重 Weight (kg)			
TK-04	--	--	3		800 (7.8)		4500		4.4			
TK-06	30°	75°	3		1200 (11.7)		4200		9.8			
TK-08	30°	30°	3		1800 (17.6)		2500		26.3			
TK-04T	--	--	3		800 (7.8)		3500		4.2			
TK-06T	--	--	3		1200 (11.7)		3500		9.5			
TK-08T	--	--	3		1800 (17.6)		2000		25.1			

內藏式超精密氣壓夾盤

1. 預設治具孔及預留自動潤滑管道：爪殼預設治具孔，有額外固定需要時不須再追加加工；且預留自動潤滑管道，可與自動潤滑裝置連結。
2. 內藏式汽缸：汽缸與夾盤直結設計，確保作動及夾持的穩定性。
3. 生爪精密定位：設有定位銷使生爪在重複拆裝時仍保持良好的定位精度。
4. 超高精度夾持提高工作效率：夾持工件的同軸度及重覆夾持精度可達 μ 級，簡化操作，實現高效率的精密加工。



尺寸圖 » Dimensions



1. Pre-machined tapped holes and lubrication path: There are tapped holes for fixing jigs, thus, additional screw machining is not necessary, and pre-machined lubrication path can connect to auto-lubrication unit to lubricate the chuck automatically.
2. Built-in Cylinder: Connect cylinder directly to the chuck for stable gripping.
3. Precise soft jaw positioning: It's easy to remount soft jaw to the correct position with dowel pins on it.
4. High gripping precision brings better quality and efficiency: Good coaxiality and repeatability of gripping are able to achieve the accuracy of " μ degree" machining processes can be simplified or shortened to make high precision machining with high efficiency come true.

本產品精密度可達 μ 級

This product reaches the repeatability of " μ degree"

應用範例 » Operation Example

氣壓切換閥連接方式 / 特殊附件
Examples of Attaching Pneumatic Manual Switch / Optional Accessories



單位/UNIT:mm

規格表 » Specifications

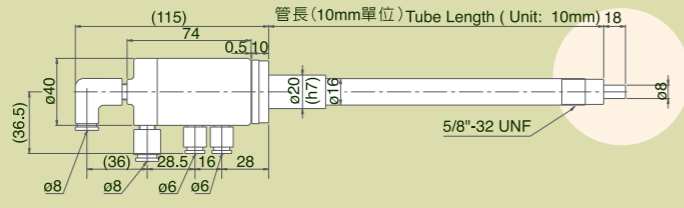
型式/規格 MODEL / SPEC.	A	B	C	D	d (H7)	E	F	H	W	L	
MTK-04	148	17	20.75	101.6	18	12.7	12.7	80	16	13	
MTK-06	200	18	39.75	152.4	26	12.7	12.7	81	22	18	
MTK-04T	148	17	20.75	101.6	18	12.7	12.7	80	16	13	
MTK-06T	200	18	39.75	152.4	26	12.7	12.7	81	22	18	
型式/規格 MODEL / SPEC.	M		M1		M2		M3		N		T1
MTK-04	ϕ 9(PCD ϕ 130)		6-M5x0.8P(PCD ϕ 88.9)		6-M5x0.8P		9- ϕ 3.18		3-M8x1.25P		3-M5x0.8P(PCD ϕ 88.9)
MTK-06	ϕ 11(PCD ϕ 180)		6-M6x1P(PCD ϕ 135.89)		12-M5x0.8P		9- ϕ 3.18		4-M10x1.5P		3-M6x1P(PCD ϕ 135.89)
MTK-04T	ϕ 9(PCD ϕ 130)		6-M5x0.8P(PCD ϕ 88.9)		4-M5x0.8P		6- ϕ 3.18		3-M8x1.25P		2-M5x0.8P(PCD ϕ 70)
MTK-06T	ϕ 11(PCD ϕ 180)		6-M6x1P(PCD ϕ 135.89)		8-M5x0.8P		6- ϕ 3.18		4-M10x1.5P		2-M6x1P(PCD ϕ 110)
型式/規格 MODEL / SPEC.	T2		T3		爪行程(直徑) Jaw Stroke (Diameter) (mm)		空壓夾持力 Gripping Force At Air Pressure 7 kgf/cm ² (0.7MPa) kgf (kN)		淨重 Weight (kg)		
MTK-04	--		--		3		800 (7.8)		6.2		
MTK-06	3-M6x1P(PCD ϕ 110)		3-M6x1P(PCD ϕ 135.89)		3		1200 (11.7)		13		
MTK-04T	--		--		3		800 (7.8)		6		
MTK-06T	--		--		3		1200 (11.7)		12.6		

TB AIR FEED TUBE

氣壓迴轉器



尺寸圖 > Dimensions



例如:長度 500mm 時填記 50。
Ex. Fill in 50
for required length of 500mm.

規格表 > Specifications

單位/UNIT:mm

型式/規格 MODEL / SPEC.	最高迴轉速 Max.Speed	推薦潤滑油 Recommended Lubricant	氣壓最高使用壓力 Max. Pressure
TB-XX-18	8000min ⁻¹	VG6同等級油 VG6 or Equal	8.2 kgf/cm ² (0.8MPa)

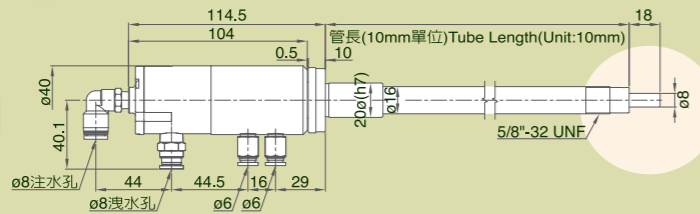
TBW AIR FEED TUBE (FOR GRINDING MACHINES)

氣壓迴轉器 (注水型)

專利產品
Patent Protected



尺寸圖 > Dimensions



例如:長度 500mm 時填記 50。
Ex. Fill in 50
for required length of 500mm.

規格表 > Specifications

單位/UNIT:mm

型式/規格 MODEL / SPEC.	最高迴轉速 Max.Speed	推薦潤滑油 Recommended Lubricant	氣壓最高使用壓力 Max. Pressure	注水孔最高使用壓力 Coolant connection Max. Pressure
TBW-XX-18	8000min ⁻¹	VG6同等級油 VG6 or Equal	8.2 kgf/cm ² (0.8MPa)	8.2 kgf/cm ² (0.8MPa)

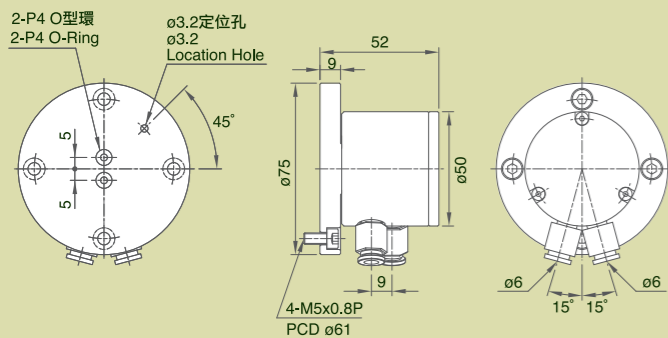
MTB AIR FEED TUBE

氣壓迴轉器



尺寸圖 > Dimensions

單位/UNIT:mm



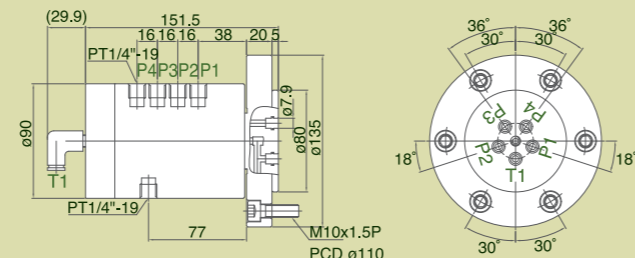
TB-HA HYDRAULIC FEED TUBE (BUILT-IN SENSOR)

油壓迴轉器 (含檢知裝置)



尺寸圖 > Dimensions

單位/UNIT:mm

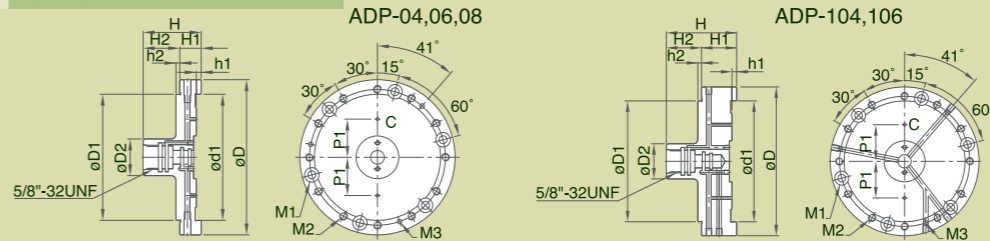


油壓壓力 Hydr. Pressure kgf/cm ² (MPa)	注氣壓力 Air connection Max. Pressure kgf/cm ² (MPa)	淨重 Weight (kg)
45 (4.4)	8.2 (0.8)	5.6

ADP MOUNTING PLATES

連結盤

尺寸圖 > Dimensions



規格表 > Specifications

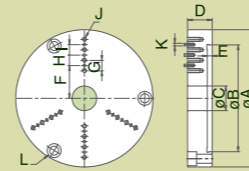
單位/UNIT:mm

型式/規格 MODEL / SPEC.	D	D1 (h7)	D2	d1 (H7)	P1	H	H1	H2	h1	h2	M1	M2	M3
ADP-04	101.6	82.55	24	82.55	25	38	14	24	3.2	2.5	6-M5x0.8P (PCD ø88.9)	12-M5x0.8P (PCD ø88.9)	3-ø3 (PCD ø88.9)
ADP-06	152.4	124.97	24	124.97	34.5	38	14	24	3.2	2.5	6-M6x1P (PCD ø135.89)	12-M6x1P (PCD ø135.89)	3-ø3 (PCD ø135.89)
ADP-08	203.2	167.64	30	167.64	50	54	25	29	7.0	5.0	6-M10x1.5P (PCD ø182.88)	6-M10x1.5P (PCD ø182.88)	3-ø4 (PCD ø182.88)
ADP-104	101.6	82.55	24	82.55	25	48	24	24	3.2	2.5	6-M5x0.8P (PCD ø88.9)	12-M5x0.8P (PCD ø88.9)	3-ø3 (PCD ø88.9)
ADP-106	152.4	124.97	24	124.97	34.5	48	24	24	3.2	2.5	6-M6x1P (PCD ø135.89)	12-M6x1P (PCD ø135.89)	3-ø3 (PCD ø135.89)

FR FORMING RINGS (FOR SOFT JAWS OF SUPER PRECISION AIR CHUCKS)

超精密生爪成型盤

尺寸圖 > Dimensions



規格表 > Specifications

單位/UNIT:mm

型式/規格 MODEL / SPEC.	A	B	C	D	E	F	G	H	I	J	K	L	淨重 Weight (Kg)
FR-04	112	80	22	30	6	21	12.7	12.7	12.7	6-M5x0.8P	9-ø3.175	3-M8x1.25P	1.9
FR-06	167	130	30	30	6	40	12.7	12.7	12.7	12-M5x0.8P	9-ø3.175	3-M10x1.5P	4.3
FR-08	203	160	54	35	6	66	25.4	25.4	-	6-M10x1.5P	6-ø6.35	3-M10x1.5P	7.2

氣壓迴轉器

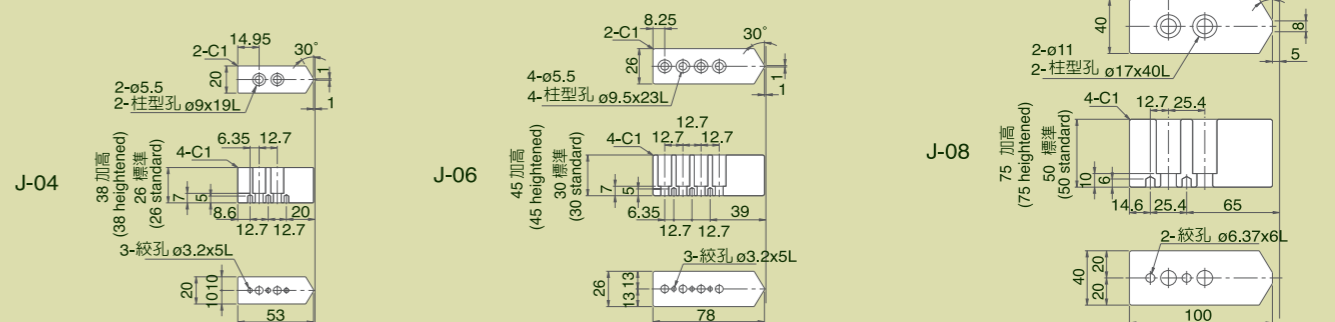
J SOFT JAWS FOR SUPER PRECISION CHUCKS

超精密夾頭生爪



尺寸圖 > Dimensions

單位/UNIT:mm



迴轉氣壓夾盤

間歇性運轉

輕切削加工適用
迴轉式氣壓夾盤適用於分度盤，具可隨分度盤主軸旋轉功能，動力夾持加工物作角度分割或旋轉切削。

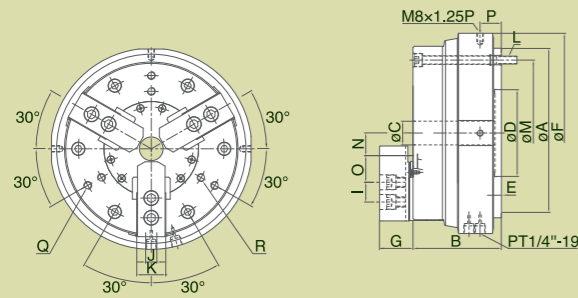
- 1.提供NC分度盤間歇性迴轉的配套使用，轉速需在限制範圍內。
- 2.氣缸防銹處理：在潮溼及工作環境較差的情況，氣缸內部經防銹處理，不會生銹或卡死。
- 3.前置式氣缸：氣缸與夾盤直結設計，確保夾持的穩定性，更方便於組裝及操作。



Suitable for light cutting
It's Ideal for dividing or cutting work pieces by mounting the chuck on indexing table or rotary table. The distinctive feature is that chuck rotates with the spindle of indexing table or rotary table.

- 1.The chuck is designed for intermittently rotate in limited rotary speed with rotary table.
- 2.Rustproof treated cylinder:
The cylinder won't get rusty and seized even in wet or high moisture working environment.
- 3.Integral pneumatic cylinder:
Connect chuck and built-in cylinder to each other directly; thus enables operation stability. Moreover, it is more convenient for installation and operation since the use of draw tube and draw bar are no longer necessary.

尺寸圖 » Dimensions



規格表 » Specifications

單位/UNIT:mm

型式/規格 MODEL /SPEC.	A	B	C	D	E	F	G	H	I	J	K
RT-05	140	85	16	60	6	182	33.6	62	14	10	25
RT-06	170	93	20	80	7	215	40.4	73	20	12	31
RT-08	215	112	30	110	8	255	42.4	95	25	14	35

型式/規格 MODEL /SPEC.	L	M	N max.	N min.	O max.	O min.	P	Q	R	通孔直徑 Thru-Hole (Diameter) (mm)
RT-05	6-M8x1.25P	PCD ϕ 118	26.93	24.62	20.05	6.55	26	--	3-M8x1.25P(PCD ϕ 92)	16
RT-06	6-M8x1.25P	PCD ϕ 147	36.46	33.69	21.55	15.55	26	--	3-M10x1.5P(PCD ϕ 130)	20
RT-08	6-M10x1.5P	PCD ϕ 185	44.92	41.52	29.55	17.55	27	3-M10x1.5P(PCD ϕ 186)	3-M10x1.5P(PCD ϕ 146)	30

型式/規格 MODEL /SPEC.	活塞面積 Piston Area (cm ²)	柱塞行程 Plunger Stroke (mm)	爪行程(直徑) Jaw Stroke (Diameter) (mm)	最高轉速 Max.Speed r.p.m.(min ⁻¹)	最大設定壓力 Max. Pressure kgf/cm ² (MPa)	氣壓夾持力 Gripping Force At Air Pressure 7kgf/cm ² (0.7MPa) kgf (kN)	夾持範圍 Gripping Range
RT-05	74	10	4.6	51	7 (0.7)	1340 (13.1)	ϕ 4- ϕ 140
RT-06	120	13	5.5	41	7 (0.7)	2330 (22.8)	ϕ 25- ϕ 170
RT-08	190	16	6.8	33	7 (0.7)	3730 (36.5)	ϕ 33- ϕ 215

迴轉氣壓夾盤

低扭矩 含止逆閥 可連續運轉

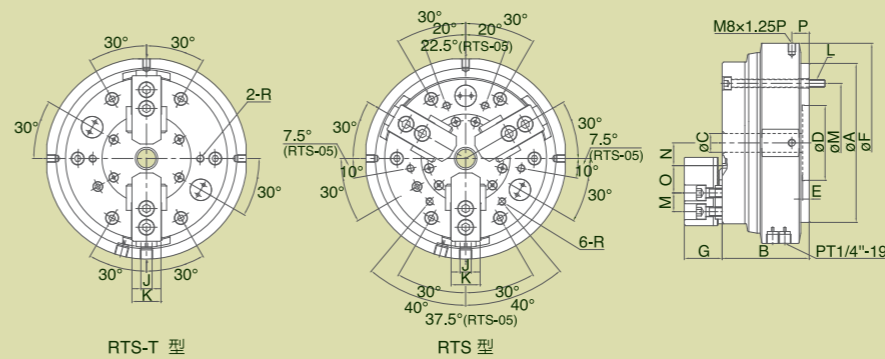
新產品
NEW
專利產品
Patent Protected

- 1.提高轉速：較高的轉速能夠對應更廣範圍的應用。
- 2.內藏式止逆裝置：內藏式止逆閥設計，夾持狀態下不需持續供氣也能保持夾持力，並且大幅降低工作扭矩減少負載。
- 3.防塵排水專利結構可以防止工作中鐵屑及切屑液進入夾頭內部，維持夾頭正常運作。
- 4.前置式氣缸設計：氣缸與夾盤直結設計，確保夾持的穩定性，更方便於組裝及操作。
- 5.氣缸防銹處理：在潮溼及工作環境較差的情況，氣缸內部經防銹處理，不會生銹或卡死。



- 1.Higher Rotation Speed: Higher rotation speed to fit with more kind of working.
- 2.Built in Check Valve:
Design with built in Check Valve.It's doesn't need to supply the air continuously and remain low working torque also reduce the air consumption.
- 3.Dustproof and drainage patent structure can prevent the metal chips and coolant get into chuck inside while processing, and maintain.
- 4.Integral pneumatic cylinder: Connect chuck and built-in cylinder to each other directly; thus enables operation stability. Moreover, it is more convenient for installation and operation since the use of draw tube and draw bar are no longer necessary.
- 5.Rustproof treated cylinder: The cylinder won't get rusty and seized even wet or high moisture working environment.

尺寸圖 » Dimensions



規格表 » Specifications

單位/UNIT:mm

型式/規格 MODEL /SPEC.	A	B	C	D	E	F	G	H	I	J	K
RTS-05	140	85	16	60	6	182	33.6	62	14	10	25
RTS-06	170	93	20	80	7	215	40.4	73	20	12	31
RTS-08	215	112	30	110	8	255	42.4	95	25	14	35
RTS-10	255	120	43	140	8	300	46.4	110	30	16	40
RTS-05T	140	85	16	60	6	182	33.6	62	14	10	25
RTS-06T	170	93	20	80	7	215	40.4	73	20	12	31

型式/規格 MODEL /SPEC.	L	M	N max.	N min.	O max.	O min.	P	R	通孔直徑 Thru-Hole (Diameter) (mm)	活塞面積 Piston Area (cm ²)
RTS-05	6-M8x1.25P	PCD ϕ 118	26.93	24.62	20.05	6.55	18.5	6-M6x1P(PCD ϕ 92)	16	74
RTS-06	6-M8x1.25P	PCD ϕ 147	36.46	33.69	21.55	15.55	18.5	6-M8x1.25P(PCD ϕ 120)	20	120
RTS-08	6-M10x1.5P	PCD ϕ 185	44.92	41.52	29.55	17.55	19.5	6-M10x1.5P(PCD ϕ 155)	30	190
RTS-10	6-M10x1.5P	PCD ϕ 220	53.63	49.59	36.55	17.05	21.5	6-M12x1.75P(PCD ϕ 190)	43	280
RTS-05T	6-M8x1.25P	PCD ϕ 118	26.93	24.62	20.05	6.55	18.5	2-M6x1P(PCD ϕ 92)	16	74
RTS-06T	6-M8x1.25P	PCD ϕ 147	36.46	33.69	21.55	15.55	18.5	2-M8x1.25P(PCD ϕ 115)	20	120

型式/規格 MODEL /SPEC.	柱塞行程 Plunger Stroke (mm)	爪行程(直徑) Jaw Stroke (Diameter) (mm)	最高轉速 Max.Speed r.p.m.(min ⁻¹)	壓力範圍 Pressure Setting Range kgf/cm ² (MPa)	氣壓夾持力 Gripping Force At Air Pressure 7kgf/cm ² (0.7MPa) kgf (kN)	夾持範圍 Gripping Range	淨重 Weight (kg)
RTS-05	10	4.6	450	2-7 (0.2-0.7)	1340 (13.1)	ϕ 4- ϕ 136	10
RTS-06	13	5.5	350	2-7 (0.2-0.7)	2330 (22.8)	ϕ 25- ϕ 166	16.8
RTS-08	16	6.8	300	2-7 (0.2-0.7)	3730 (36.5)	ϕ 33- ϕ 215	30.6
RTS-10	19	8.0	250	2-7 (0.2-0.7)	5480 (53.7)	ϕ 43- ϕ 255	45.1
RTS-05T	10	4.6	450	2-7 (0.2-0.7)	1340 (13.1)	ϕ 4- ϕ 136	9.7
RTS-06T	13	5.5	350	2-7 (0.2-0.7)	2330 (22.8)	ϕ 25- ϕ 166	16.3

MA 2 ACTUATING AXES SELF-CENTERING SOLID AIR CHUCK FIXTURES

兩軸自動求心氣壓夾盤

兩軸自動求心氣壓夾盤專供中心機及各式工作台面的加工而設計，在X,Y兩軸間同時夾持任何異形工件具快速自定工件中心之功能。具3大特色：

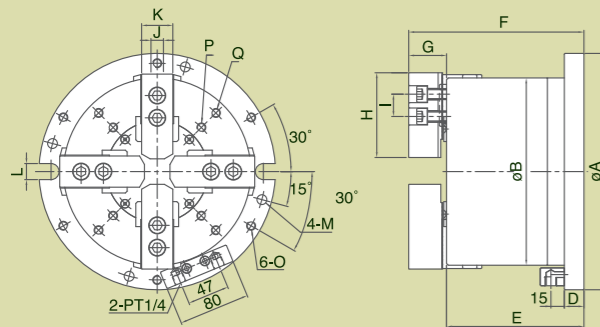
- 1.氣缸防銹處理：**在潮溼及工作環境較差的情況，氣缸內部經防銹處理，不會生銹或卡死。
- 2.防塵裝置：**在工作台上的銼銑工作、切屑及冷卻液不易進入夾盤內部，確保夾盤的使用壽命及精度。
- 3.多邊夾持、自定中心：**有別於虎鉗的單一軸向夾持，兩軸自動求心氣壓夾盤分別在X,Y兩軸向分割成兩組夾持動作，且同時自定工件中心，能快速準確的固定工件，在任一軸向銼削均能達到穩固的效果。



2 actuating axes self-centering solid air chuck fixtures is great for machining center. Two pairs of jaws clamp one after another to assure a workpiece to be locked completely.

- 1.Rust-proof for Pneumatic Cylinder:**
Inside wall of cylinder being rustproof treated; cylinder can work under wet or high moisture circumstances without rusty or seized trouble.
- 2.Dusts-proof and Waterproof:**
Dust-proof and Waterproof structure prevents work-chips and coolant water from entering into inside of chuck cylinder to maintain its accuracy and lead to longer service life.
- 3.4-jaw Clamping and Self-centering:**
4-jaw clamping are steadier for machining. Two pairs of jaws are moved independently to assure complete lock and self-centering.

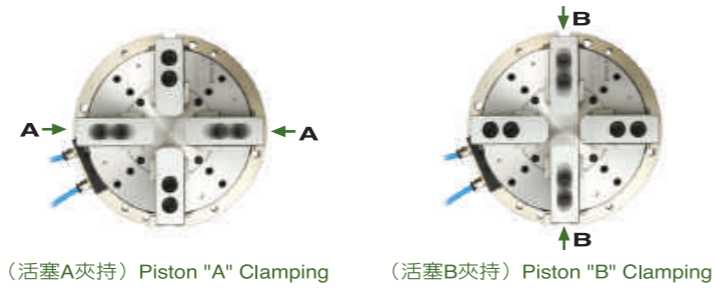
尺寸圖 » Dimensions



應用實例 » Operation Example

快速、準確、自動化
Speed, Accurate, Automatic

兩段分割夾持，自定中心
4-jaws clamping and self-center



(活塞A夾持) Piston "A" Clamping (活塞B夾持) Piston "B" Clamping
單位/UNIT:mm

規格表 » Specifications

型式/規格 MODEL /SPEC.	A	B	D	E	F	G	H	I	J	K	L	M
MA-06	224	175	20	130	170	40	73	20	12	31	18	ø11(PCDø202)
MA-08	265	210	22	154	196	42	95	25	14	35	18	ø11(PCDø243)
MA-10	315	250	25	176	222	46	110	30	16	40	18	ø13(PCDø285)

型式/規格 MODEL /SPEC.	O	P	Q	A 活塞面積 推力側 Push Side	Piston Area (cm ²) 拉力側 Pull Side
MA-06	M10x1.5P(PCD ø202)	4-M8x1.25P(PCD ø124)	4-M8x1.25P(PCD ø156)	127	108
MA-08	M10x1.5P(PCD ø243)	4-M10x1.5P(PCD ø140)	4-M10x1.5P(PCD ø186)	184	157
MA-10	M12x1.75P(PCD ø285)	4-M10x1.5P(PCD ø176)	4-M10x1.5P(PCD ø224)	270	239

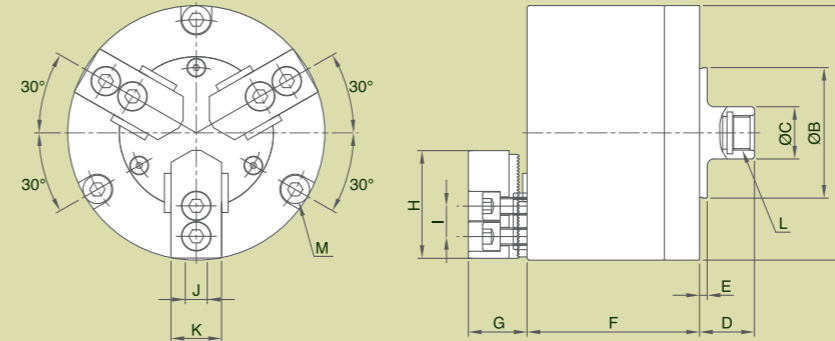
型式/規格 MODEL /SPEC.	B 活塞面積 推力側 Push Side	Piston Area (cm ²) 拉力側 Pull Side	柱塞行程 Plunger Stroke (mm)	爪行程 (直徑) Jaw Stroke (Diameter) (mm)	空壓夾持力 Gripping Force At Air Pressure 7kgf/cm ² (0.7MPa) (kgf)	淨重 Weight (kg)	夾持範圍 Gripping Range	
MA-06	122	117	12	5.5	4500	(44)	24.8	ø25~ø175
MA-08	176	169	16	7.4	6400	(63)	41.3	ø30~ø210
MA-10	254	241	19	8.8	9500	(93)	65.6	ø35~ø250

MR 3-JAW AIR CHUCKS

三爪氣壓夾頭



尺寸圖 » Dimensions



分度盤使用範例 » Operation Example for rotary table



CNC車床使用範例 » Operation Example for CNC Lathe



規格表 » Specifications

型式/規格 MODEL /SPEC.	A	B	C	D	E	F	G	H	I	J	L	K	M
MR-04	117	60	24	25	3.5	84.5	26.7	49.5	14	10	5/8"-32UNF	23	3-M8x1.25P(PCDø104)

型式/規格 MODEL /SPEC.	活塞面積 Piston Area (cm ²)	柱塞行程 Plunger Stroke (mm)	爪行程直徑 Jaw Stroke (Diameter) mm	空壓夾持力 At Air Pressure kgf	Gripping Force 7 kgf/cm ² (0.7MPa) (kN)	最高迴轉速 Max.Speed r.p.m (min ⁻¹)	夾持範圍 Gripping Range
MR-04	57	9	3.8	1100	(10.8)	3800	ø10~ø117