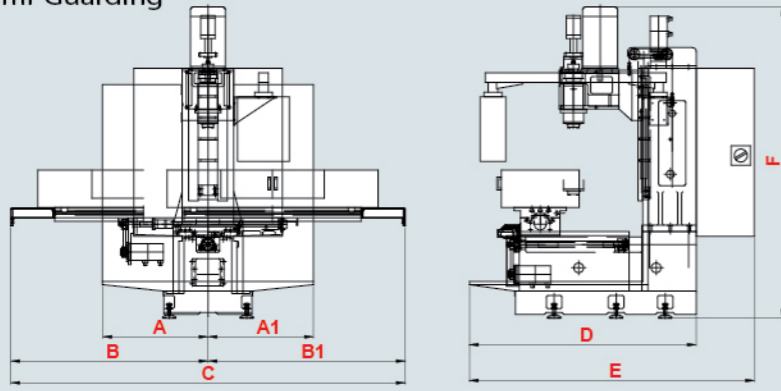


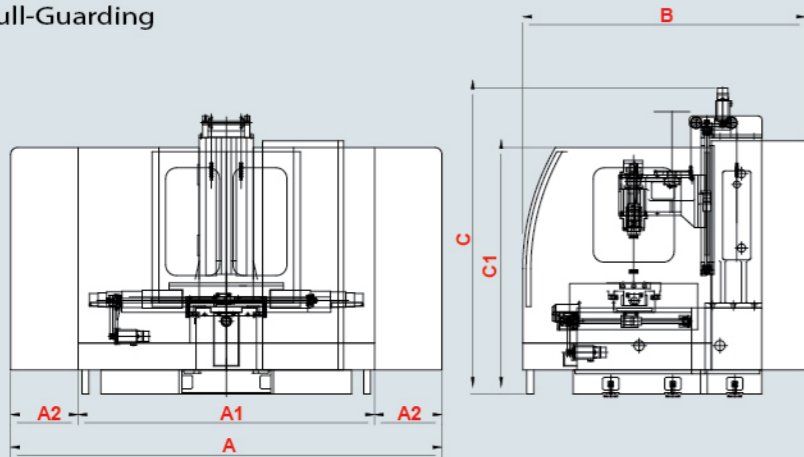
**MACHINE DIMENSION :** (unit:mm)

Semi-Guarding



TYPE	A	A1	B	B1	C	D	E	F
GSM-800S	680	680	1,300	1,300	2,600	1,575	2,025	2,335
GSM-1000S	705	705	1,545	1,545	3,090	1,720	2,170	2,500
GSM-1270S	950	950	1,805	1,805	3,610	2,435	2,885	2,550
GSM-1300S	810	810	1,915	1,895	3,810	1,920	2,380	2,680
GSM-1500S	810	810	2,155	2,145	4,300	2,080	2,540	2,680
GSM-1520S	950	950	2,124	2,124	4,248	2,435	2,885	2,650
GSM-1500LS	1,085	1,085	2,180	2,180	4,360	2,470	2,930	2,740
GSM-1510S	930	930	2,314	2,314	4,628	2,800	3,300	2,700
GSM-1700S	1,240	1,240	2,400	2,400	4,800	2,760	-	2,730
GSM-2000S	1,240	1,240	2,780	2,775	5,655	2,760	-	2,730
GSM-2500S	3,855	3,855	3,620	3,580	7,200	2,820	-	2,730
GSM-3000S	3,805	3,805	3,685	3,685	7,370	2,780	-	3,020

Full-Guarding



TYPE	A	A1	A2	B	C	C1
GSM-800F	2,810	2,210	300	2,010	2,250	1,750
GSM-1000F	3,170	2,210	485	2,110	2,500	1,750
GSM-1270F	3,720	2,210	750	2,950	2,518	1,900
GSM-1300F	4,150	2,210	960	2,400	2,500	1,900
GSM-1500F	4,430	2,210	1,100	2,400	2,540	1,900
GSM-1520F	4,360	2,210	1,070	2,950	2,580	1,950
GSM-1500LF	4,430	2,210	1,100	2,680	2,540	1,950
GSM-1510F	4,825	2,210	1,308	3,450	2,620	1,950
GSM-1700F	5,300	2,210	1,540	2,800	2,800	1,950
GSM-2000F	5,600	2,210	1,695	2,800	2,800	1,950
GSM-2500F	7,050	4,510	1,270	2,800	2,800	1,950
GSM-3000F	7,550	6,480	535	2,923	2,728	1,950

**STANDARD ACCESSORIES :**

- Coolant Unit
- Auto Lube System
- Spindle Air Blast
- Alarm Light
- Heat Exchanger
- Tool Box
- Work Lamp

**OPTIONAL ACCESSORIES :**

- Spindle Oil Cooler
- Power Source Transformer
- Armless Type ATC(16T, 20T)
- Arm Type ATC (24T)
- Coolant Thru Spindle
- 10000rpm Spindle
- Two Speed Gear Box
- Screw Type Chip Conveyor
- Belt Type Chip Conveyor
- Ce Norms
- Gsm-3000 Gear-head

LVS 2019.02-2000 © Copy right reserved.



**GSM**® GENG-SHUEN CO., LTD.



No. 37, 23th Rd., Taichung Ind.Park, Taichung 408, Taiwan.  
 TEL: 886-4-2358-8019 • FAX: 886-4-2358-8067  
 Email: genshu@ms55.hinet.net  
 http://www.gsm-cnc.com.tw

**CNC VERTICAL MILLING MACHINE**

**GSM**® GENG-SHUEN CO., LTD.





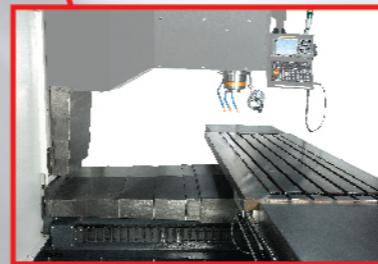
# CNC VERTICAL MILLING MACHINE



▲ GSM-1000S



▲ GSM-1510S



## Semi-Guarding



▲ GSM-1700S



▲ GSM-2500S



▲ GSM-2000S



▲ GSM-3000S

### MACHINE FEATURES:

- This machine is constructed with heavy-duty Meehanite cast iron to ensure high rigidity, wear resistance, and no deformation.
- The X, Y and Z axis slideways are coated with Turcite-B to assure smoothness and abrasion resistance.
- The X, Y, and Z axis adopt high precision double nuts pre-loaded type ball screws.
- P4-grade precision bearing is adopted for the main spindle.

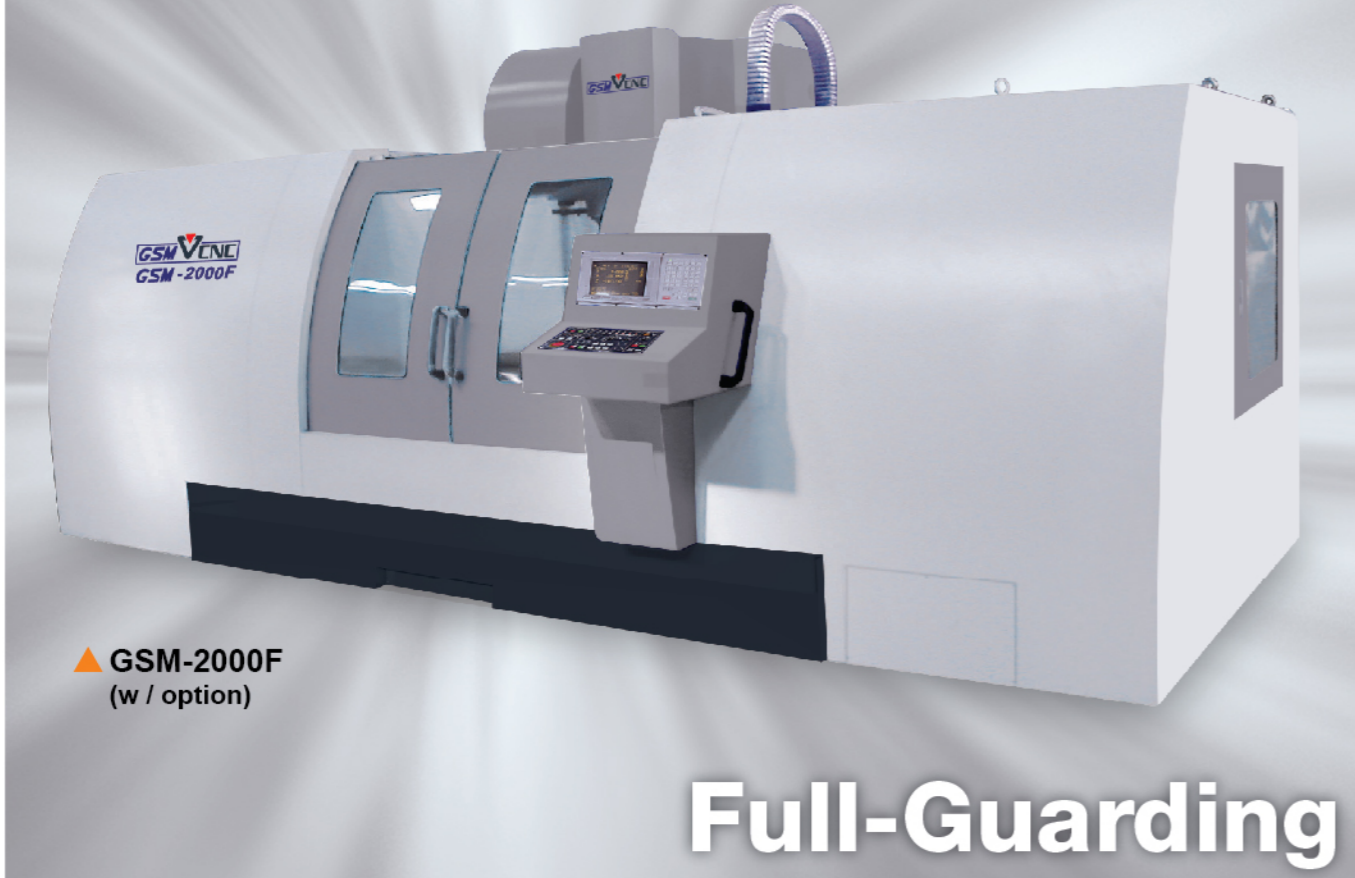
ITEMS	UNITS	GSM-800	GSM-1000	GSM-1270	GSM-1300	GSM-1500	GSM-1520	GSM-1500L	GSM-1510	GSM-1700	GSM-2000	GSM-2500	GSM-3000
<b>TABLE</b>													
Worktable	mm/inch	355x1270/14"x50"	406x1372/16"x54"	500x1600/20"x63"	420x1600/16.5"x63"	450x1800/17"x70"	610x1854/24"x73"	610x1854/24"x73"	800x1854/31"x73"	762x1830/30"x72"	813x2185/32"x86"	813x2750/32"x108"	813x3200/32"x126"
T-slot	mm	16 x 3 x 64	16 x 3 x 64	18 x 5 x 70	16 x 5 x 60	16 x 5 x 60	18 x 5 x 70	18 x 5 x 70	18 x 5 x 70	18 x 5 x 100	18 x 5 x 100	18 x 5 x 125	18 x 7 x 100
Table load capacity	kgs	500	600	1100	800	1000	1300	1500	1500	1500	1800	2000	2200
<b>MOVEMENT</b>													
X axis travel	m/m	800	1000	1270	1300	1500	1520	1500	1500	1700	2000	2500	3000
Y axis travel	m/m	400	500	720	635	650	720	850	1020	850	850	850	900
Z axis Travel	m/m	450	520 (600)	600	620	620	700	710	710	710	710	710	750
<b>SPINDLE HEAD</b>													
Spindle taper		BT-40 (CAT-40)	BT-40 (CAT-40)	BT-40 (CAT-40)	BT-40 (CAT-40)	BT-40 (CAT-40)	BT-40 (CAT-40)	BT-40 (CAT-40 DIN40)	BT-40 (CAT-40)	BT-40 (CAT-40)	BT-40 (CAT-40)	BT-40 (CAT-40 DIN40)	BT-50 (CAT-50 DIN50)
Spindle speed	rpm	8000 / Op:(10000)										8000	6000
Feed Rate	m/min	0-5	0-5	0-5	0-5	0-5	0-5	0-5	0-5	0-5	0-5	0-10	0-10
Ballscrew diameter	m/min	Ø32	Ø32	Ø40	Ø40	Ø40	Ø40	Ø40	Ø40	Ø40	Ø40	Ø50	Ø80 (Ø63)
Rapid travel	m/min	0-10	0-10 (0-20)	0-20	0-10 (0-20)	0-10 (0-20)	0-20	0-10 (0-20)	0-10 (0-20)	0-10 (0-20)	0-10 (0-20)	0-10 (0-20)	0-10 (0-20)
<b>MOTORS</b>													
Spindle motor	HP	7.5	10	10	10	10 (15)	10	15	15	15 (20)	15 (20)	20	20
Tool storage capacity		(16)	(16)	(16;20)	(16;20)	(20;24)	(16;20)	(20;24)	(20;24)	(20;24)	(20;24)	(20;24)	(20;24)
N.W.	kgs	2700	2900	4800	3600	4000	5000	4800	5600	6400	6800	9500	14600/1100/800
G.W.	kgs	3000	3200	5200	4000	4300	5400	5200	6000	6800	7200	10000	15000/1500/1000
Packing measurement	cm	190x228x240	191x228x250	330x228x254	264x228x254	264x228x254	330x228x254	307x228x254	360x226x254	305x228x254	305x228x254	375x228x254 320x228x100	610x228x254 240x226x150 180x226x110

• Specifications and design are subject to change without notice.

( ) Options



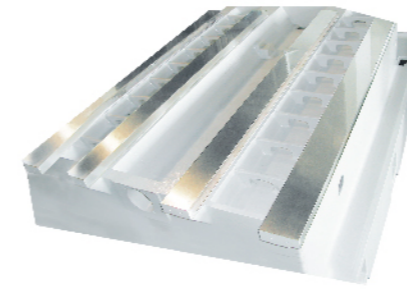
# CNC VERTICAL MILLING MACHINE



▲ GSM-2000F  
(w / option)

## Full-Guarding

HIGH RIGIDITY CONSTRUCTION WITH EXCELLENT STABILITY & PERFORMANCE

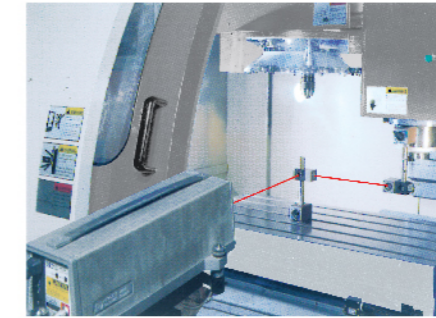


**4 HARD BOX WAYS DESIGN:**

Rigid, Solid and robust for a long service life.

● **HIGH STRENGTH STRUCTURE:**

One piece 4-box way casting, heavy-duty, hi-stability.



● **LASER CALIBRATION :**

All machines are measured & calibrated using laser calibration equipment to ensure precise verification & compensation of the machines and get the best accuracy & repeatability.



**6 HARD BOX WAYS DESIGN:**

Rigid, Solid and robust for a long service life.

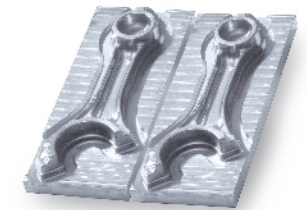
● **HIGH STRENGTH STRUCTURE:**

One piece 6-box way casting, heavy-duty, hi-stability.



● **BALL BAR :**

To ensure best accuracy & alignment in circular path, machines are inspected by ball bar tested.



ITEMS	UNITS	GSM-800	GSM-1000	GSM-1270	GSM-1300	GSM-1500	GSM-1520	GSM-1500L	GSM-1510	GSM-1700	GSM-2000	GSM-2500	GSM-3000	
<b>TABLE</b>														
Worktable	mm/inch	355x1270/14"x50"	406x1372/16"x54"	500x1600/20"x63"	420x1600/16.5"x63"	450x1800/17"x70"	610x1854/24"x73"	610x1854/24"x73"	800x1854/31"x73"	762x1830/30"x72"	813x2185/32"x86"	813x2750/32"x108"	813x3200/32"x126"	
T-slot	mm	16 x 3 x 64	16 x 3 x 64	18 x 5 x 70	16 x 5 x 60	16 x 5 x 60	18 x 5 x 70	18 x 5 x 70	18 x 5 x 70	18 x 5 x 100	18 x 5 x 100	18 x 5 x 125	18 x 7 x 100	
Table load capacity	kgs	500	600	1100	800	1000	1300	1500	1500	1500	1800	2000	2200	
<b>MOVEMENT</b>														
X axis travel	m/m	800	1000	1270	1300	1500	1520	1500	1500	1700	2000	2500	3000	
Y axis travel	m/m	400	500	720	635	650	720	850	1020	850	850	850	900	
Z axis Travel	m/m	450	520 (600)	600	620	620	700	710	710	710	710	710	750	
<b>SPINDLE HEAD</b>														
Spindle taper		BT-40 (CAT-40)	BT-40 (CAT-40)	BT-40 (CAT-40)	BT-40 (CAT-40)	BT-40 (CAT-40)	BT-40 (CAT-40)	BT-40 (CAT-40)	BT-40 (CAT-40)	BT-40 (CAT-40)	BT-40 (CAT-40)	BT-40 (CAT-40 DIN40)	BT-50 (CAT-50 DIN50)	
Spindle speed	rpm	8000 / Op:(10000)											8000	6000
Feed Rate	m/min	0-5	0-5	0-5	0-5	0-5	0-5	0-5	0-5	0-5	0-5	0-10	0-10	
Ballscrew diameter	m/min	Ø32	Ø32	Ø40	Ø40	Ø40	Ø40	Ø40	Ø40	Ø40	Ø40	Ø50	Ø80 (Ø63)	
Rapid travel	m/min	0-10	0-10 (0-20)	0-20	0-10 (0-20)	0-10 (0-20)	0-20	0-10 (0-20)	0-10 (0-20)	0-10 (0-20)	0-10 (0-20)	0-10 (0-20)	0-10 (0-20)	
<b>MOTORS</b>														
Spindle motor	HP	7.5	10	10	10	10 (15)	10	15	15	15 (20)	15 (20)	20	20	
Tool storage capacity		(16)	(16)	(16;20)	(16;20)	(20;24)	(16;20)	(20;24)	(20;24)	(20;24)	(20;24)	(20;24)	(20;24)	
N.W.	kgs	2800	3000	4800/600	3800/800	4200/1000	5000/800	5000/1100	5800/500	6600/1000/800	6900/1000/800	9500/1000/800	15600/1100/1100	
G.W.	kgs	3100	3300	5200/800	4200/1000	4500/1100	5400/1000	5400/1200	6200/600	7000/1100/1000	7300/1100/1000	10000/1000/1000	16000/1300/1100	
Packing measurement	cm	316x228x240	298x228x250 160x150x180	330x228x254 260x226x200	335x228x254 200x228x200	335x228x254 261x228x200	330x228x254 280x226x200	375x228x254 285x228x200	360x226x254 285x226x200	345x228x254 250x228x200 250x228x200	345x228x254 250x228x200 250x228x200	382x228x254 320x228x200 270x228x200	610x228x254 240x226x200 320x226x150	

● Specifications and design are subject to change without notice.

( ) Options



**CNC CONTROL AVAILABLE :**



FANUC / OIMF



MITSUBISHI / M80



FAGOR 8065

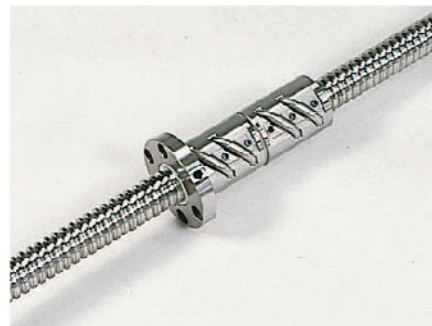


SYNTEC  
10.4 LCD (TFT)

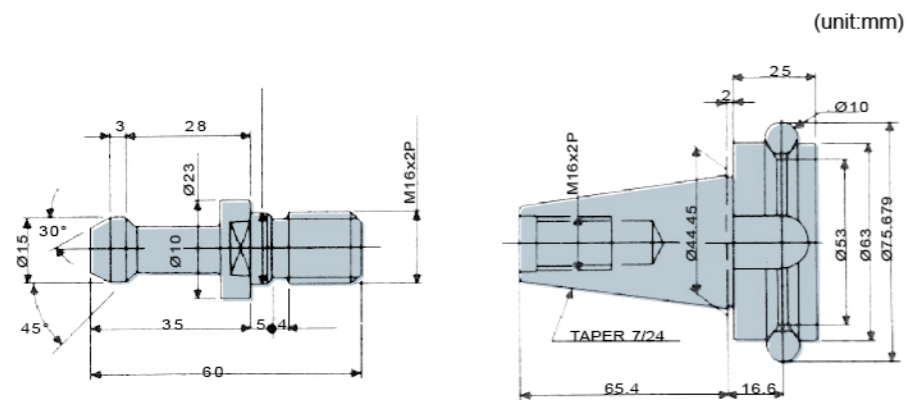
**SPINDLE**



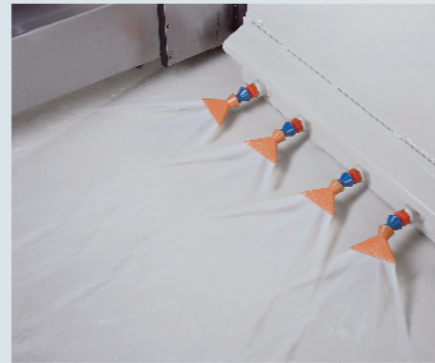
**DOUBLE NUTS BALLSCREW**



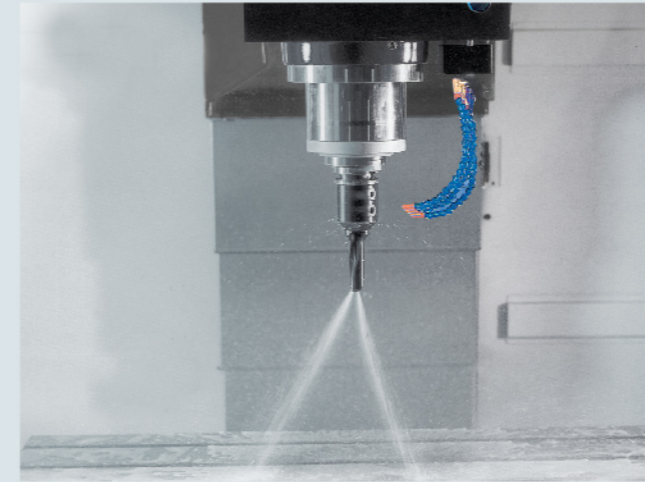
**TOOL SHANK & PULL STUD :**



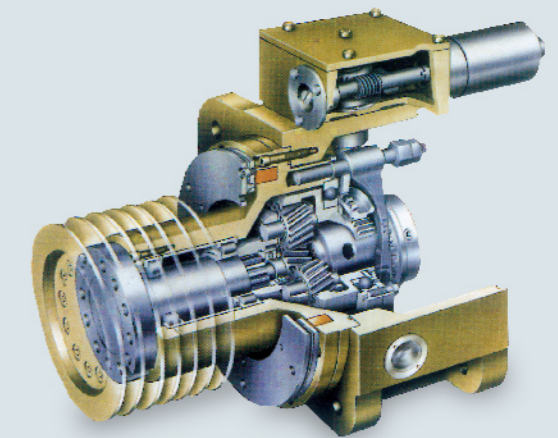
**OPTIONS :**



▲ Side / back chip flushing system



▲ Coolant thru spindle



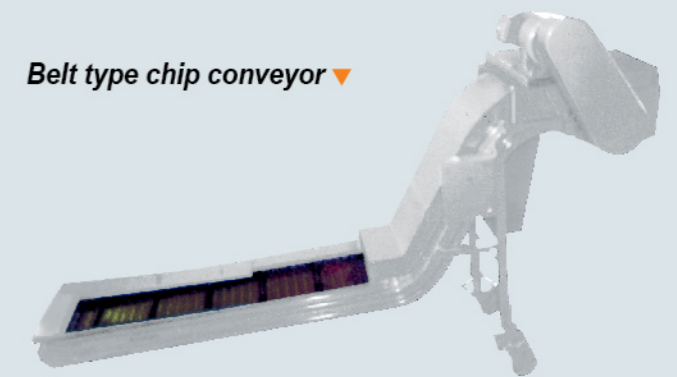
Two speed gear box ▲



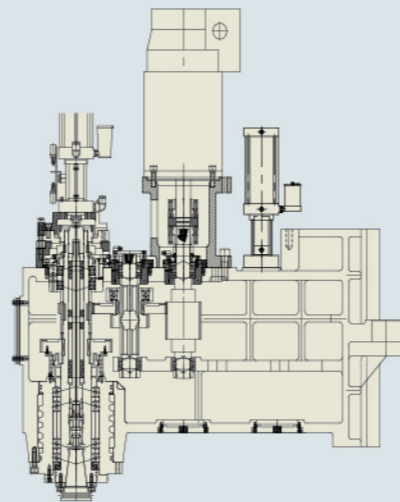
▲ Screw type chip conveyor



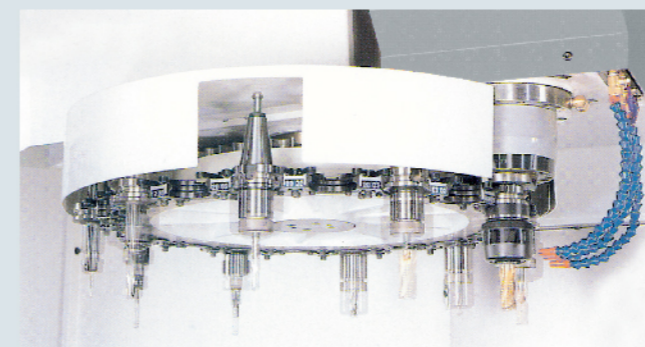
▲ Arm type tool changer



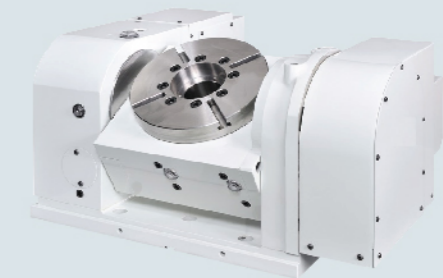
Belt type chip conveyor ▼



▲ GSM-3000 GEAR-HEAD



▲ Armless type tool changer



▲ CNC tilting rotary table



Spindle oil cooler ▶