



Yung Ji

焊刃式鎢鋼側銑刀/平面刀系列 Welded Carbide Side/Face Milling Cutter Series

■ 適用範圍：

平面刀-泛用鑄/鐵件平面粗銑/精銑/倒拉鉤加工用。

側銑刀-泛用鑄/鐵件平面粗銑/精銑/逃溝加工用。

■ 主要特性：

刀刃可分直刃、干鳥刃，刀片材質一般分K、P二種，尺寸皆可依客戶需求訂製。

■ Application:

Face Milling cutter: For Cast Irons / Irons, this series can carry on face roughing, finishing or under cutting.

Side Milling cutter: For Cast Irons / Irons, this series can carry on face roughing, finishing or fluting.

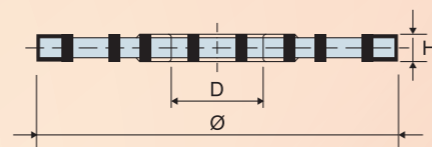
■ Main Character:

Blade types: Straight / Staggered teeth. Blade materials: K / P.

We can offer customized services also.



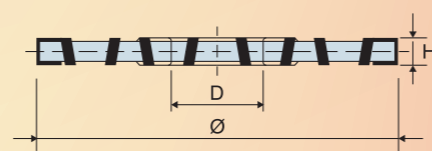
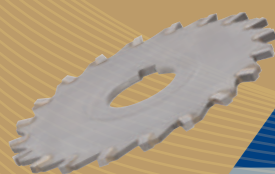
YJS-T 焊刃式鎢鋼側銑刀-直刃 Welded Carbide Side Milling Cutters - Straight Teeth



產品編碼 Item Code	外徑 Outside Diameter (Ø)	刃高 Flute Length (H)	孔徑 Hole Diameter (D)	刃數 Flute	材質 Blade Level
YJS075T(3~16)	75	3/4/5/6/8/10/12/16	25.4	14	K/P
YJS100T(3~16)	100	3/4/5/6/8/10/12/16	25.4	18	K/P
YJS125T(3~16)	125	3/4/5/6/8/10/12/16	25.4	20	K/P
YJS150T(3~12)	150	3/4/5/6/8/10/12	25.4	22	K/P
YJS175T(3~12)	175	3/4/5/6/8/10/12	25.4	24	K/P
YJS200T(3~12)	200	3/4/5/6/8/10/12	25.4	28	K/P

■ 特殊規格訂製。Make to order for special specification.

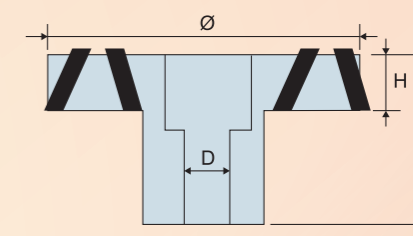
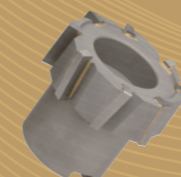
YJS-G 焊刃式鎢鋼側銑刀-千鳥刃 Welded Carbide Side Milling Cutters - Staggered Teeth



產品編碼 Item Code	外徑 Outside Diameter (Ø)	刃高 Flute Length (H)	孔徑 Hole Diameter (D)	刃數 Flute	材質 Blade Level
YJS075G(3~12)	75	3/4/5/6/8/10/12	25.4	14	K/P
YJS100G(3~12)	100	3/4/5/6/8/10/12	25.4	18	K/P
YJS125G(3~12)	125	3/4/5/6/8/10/12	25.4	20	K/P
YJS150G(3~12)	150	3/4/5/6/8/10/12	25.4	22	K/P
YJS175G(6~12)	175	6/8/10/12	25.4	24	K/P
YJS200G(6~12)	200	6/8/10/12	25.4	28	K/P

■ 特殊規格訂製。Make to order for special specification.

YJFM 焊刃式鎢鋼平面刀-千鳥刃 Welded Carbide Face Milling Cutters - Staggered Teeth



產品編碼 Item Code	外徑 Outside Diameter (Ø)	刃長 Flute Length (H)	孔徑 Hole Diameter (D)	刃數 Flute	全長 Overall Length (L)
YJFM075G	75	15	25.4	10	55
YJFM080G	80	15	31.75	10	55
YJFM100G	100	15	31.75	12	60
YJFM130G	130	15	31.75	16	60
YJFM150G	150	15	31.75	18	60
YJFM180G	180	15	31.75	20	60

■ 特殊規格訂製。Make to order for special specification.