



MAPLE TECHNOLOGY CO.,LTD.

Add:No.3-1,Zhongshan Rd.,Shalu Dist.,  
Taichung City43348,TaiwanR.O.C.  
Tel:+886-4-26150200  
Fax:+886-4-26153906  
Web:www.maple-tech.com.tw



You can enter Maple website if  
your phone has QR software



**ME** VERTICAL  
MACHINING CENTERS

**ME-SERIES**

M E - S E R I E S B Y M A P L E

# High Speed High Precision High Rigidity

## ME Series Vertical Machining Centers

Under the increasingly competitive environment, it is an important strategy and advantage for enterprises aim to reduce their production costs and improve their productivity, Maple machine ME Series vertical machine centers are able to meet the need to achieve economic design with high productivity.



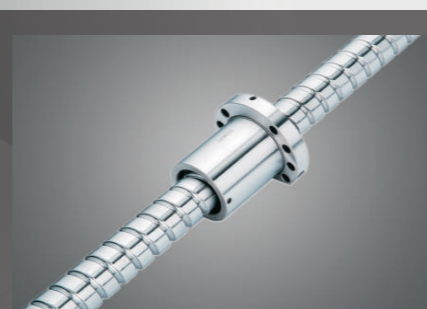
### Tool Changer Features

The ME-Series can install both disc type and umbrella type tool changers. By decreasing manual tool changes, we are able to increase productivity and decrease the cost of each parts produce.



### Spindle with high rigidity & precision

High precision spindle with a large high precision bearing spindle was selected for the ME-Series machines. With high speed and heavy cutting design for the ME-Series highly precision heat treated steel was selected for the housing of the spindle. Giving the ME-Series models an unmatched strength compared to the other machines in its class.



### High precision Screw

ME-Series models uses high accuracy C3 grade ballscrews constructed of high quality imported materials that have been heat treated to prevent wear from pro-long usage. Also, the ballscrews are created with inner tubing. This design reduces noise from the movement of the ballscrew travel by 20-40% compare to other standard ballscrew.

Specifications	Unit	ME-750Q	ME-850Q	ME-1050Q
<b>Work Table</b>				
Work Table Size	MM	800×500	1000×500	1100×500
Working Range	MM	700×500	800×500	1000×500
T-Slot of tables	MM	80×18×5	80×18×5	80×18×5
Max weight on table	KG	800	800	800
<b>Travel</b>				
X-axis Travel	MM	700	800	1000
Y-axis Travel	MM	500	500	500
Z-axis Travel	MM	500	500	500
Spindle Nose to Table	MM	110-610	110-610	110-610
Spindle Center to Stand Distance	MM	520	520	520
<b>Spindle</b>				
Spindle Taper		BT40	BT40	BT40
Spindle Speed	RPM	10000	10000	10000
Spindle Drive Type		Belt	Belt	Belt
Spindle Motor	KW	7.5	7.5	7.5
Axis Motor-Mitsubishi	KW	1.5/1.5/3.0	1.5/1.5/3.0	1.5/1.5/3.0
Axis Motor-Fanuc	KW	1.8/1.8/3.0	1.8/1.8/3.0	1.8/1.8/3.0
<b>Feedrate</b>				
X/Y/Z Cutting Feedrate	MM/Min	1-20000	1-20000	1-20000
X/Y/Z Rapid Feedrate	M/Min	36/36/24	36/36/24	36/36/24
X/Y/Z-Axis Slide		Linear Guide	Linear Guide	Linear Guide
<b>Accuracy</b>				
Positioning	MM	±0.005	±0.005	±0.005
Repeatability	MM	±0.003	±0.003	±0.003
<b>Others</b>				
Cooling	HP	3/4	3/4	3/4
Air Required	KG/cm <sup>2</sup>	6	6	6
Power Required	KVA	13	13	13
Machine Weight	KG	4500	4500	5000
Dimension	MM	2200×2410×2320	2200×2410×2320	2200×2610×2320

### Standard Equipment

- Air gun
- Tool box
- Transformer
- Rigid tapping
- Complete telescoping cover
- Low energy work light
- Hand wheel
- Auto lubrication system
- Automatic electric breaker
- Rs232 transmission line
- LED 3 color warning light
- Spindle air blast
- Cutting coolant system
- Leveling bolts and adjustment blocks
- Operation & maintenance manual
- Heat exchanger for cabinet

### Optional Equipment

- Tool changer
- Water gun
- Fourth-axis
- Stabilizator
- Linear scale
- Chip conveyor
- Spindle oil cooler
- Direct Drive spindle
- Auto workpiece probe
- CTS
- Automatic tool length scale