

# KF SERIES

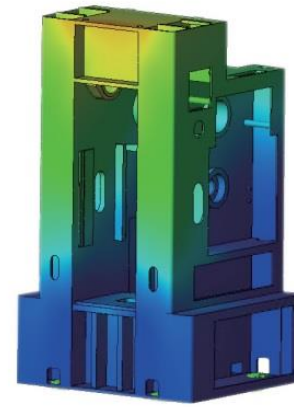
## 精密鍛壓-肘節沖床 FORGING KNUCKLE JOINT PRESS

廣泛應用於汽、機車零件  
自行車零件、手工業產業等之  
冷鍛、溫鍛、壓印、壓縮成型加工

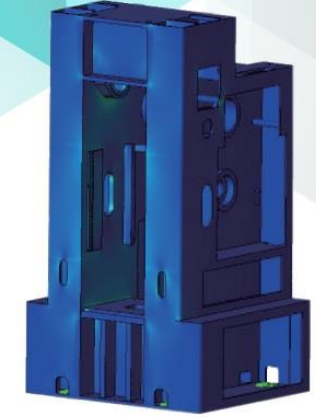
GOOD FOR  
Cold Forging, Warm Forging  
Compression Forming

On High Tensile Strength Steel  
Stainless Steel, Titanium Alloy  
Magnesium Alloy... etc

### STRUCTURE FEATURES 結構特性



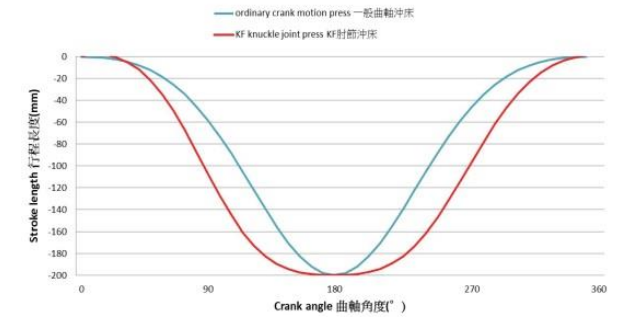
低變形量 Low Deformation



低應力殘留 Low Residual Stress

### ADVANTAGES 功能特點

- 產品强度高、金相佳  
Products with high strength and smooth surface
- 剎車器及離合器採用乾式分離，維護簡易  
Using dry type of separate brake and clutch for easy maintenance
- 使用強制潤滑循環潤滑系統，低噪音、低損耗  
Forced circulating lub. system of gears result in low noise and damage
- 沖壓與頂料可彈性搭配  
Knockout device can be used flexibly



肘節機構設計 - 加工時間比一般曲軸沖床長  
Knuckle joint mechanism  
Longer processing time than ordinary crank motion press

### SPECIFICATIONS 產品規格

型號	Model	單位 Unit	KF-500	KF-700	KF-1000
機台尺寸	Machine Size (LxWxH)	mm	2020x2100x3990	2020x2350x4300	2380x2670x4740
加工噸位	Capacity	Tons	500	700	1000
能力發生點	Capacity Rating Point	mm	5	5	5
行程數	S.P.M.	S.P.M.	30-40	30-40	30-40
行程長度	Stroke Length	mm	180	180	200
最大模高	Die Height	mm	400	400	500
滑塊調整量	Slide Adjustment	mm	50	50	50
台盤面積	Bolster Area(LRxFB)	mm	750x780	830x880	920x980
滑塊面積	Slide Area(LRxFB)	mm	580x620	580x620	735x780
主馬達	Main Motor	HPxP	30x6	40x6	50x4
下頂料行程	Lower Knockout Stroke Length	mm	60	65	70
下頂料能力	Lower Knockout Capacity	Tons	15	18	20

※ Long Jyi Machinery Co., Ltd reserves the rights to modify the specification & features, due to products improvements.  
Without further notification. 規格異動時, 恕不另行通知。



隆佳工廠股份有限公司 LONG JYI MACHINERY CO., LTD.

No.193, CHANG SHUI RD., CHANGHUA 50071, TAIWAN R.O.C.

Tel +886 4 7511 377 Fax +886 4 7522 303

longjyi.lin@msa.hinet.net

www.lonjipress.com

