

FullLand®



DMU-650SR 5 AXIS MACHINING CENTER

Feature 4H+1R

- High Precision
- High Rigidity
- High Performance
- High Speed
- Reliable

Awarded as A Proof of Excellence In Technical



FullLand®

GEON CHENG TECHNOLOGY CO., LTD.
 P.O.BOX 246 FENG YUAN TAICHUNG, TAIWAN
 No.78, Sanshe Rd., Shengang Dist. Taichung City 429, Taiwan
 TEL: +886-4-25316697 FAX: +886-4-25316657
 E-mail Address: geontech@hibox.hinet.net
 www.geontech.com.tw



5 AXIS MACHINING CENTER



1 Machine Bed

- Machine bed and slide systems made of solid welded steel and cast iron components

2 Tool magazine

- Tool changer with 20 (30, 50) ISO30, 30 (50) HSK-A40 tool stations

3 Spindle

- Mechanical spindle direct drive: 12000 rpm
- Water-cooled motor spindle: 24000 rpm

4 Control

- State-of-the-art control technology from Siemens - Siemens 840D sl or Heidenhain - TNC 620/TNC 640

5 Control Panel

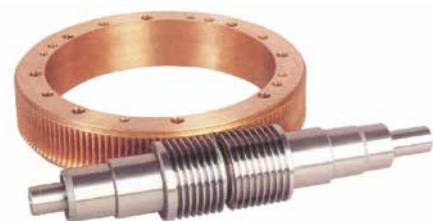
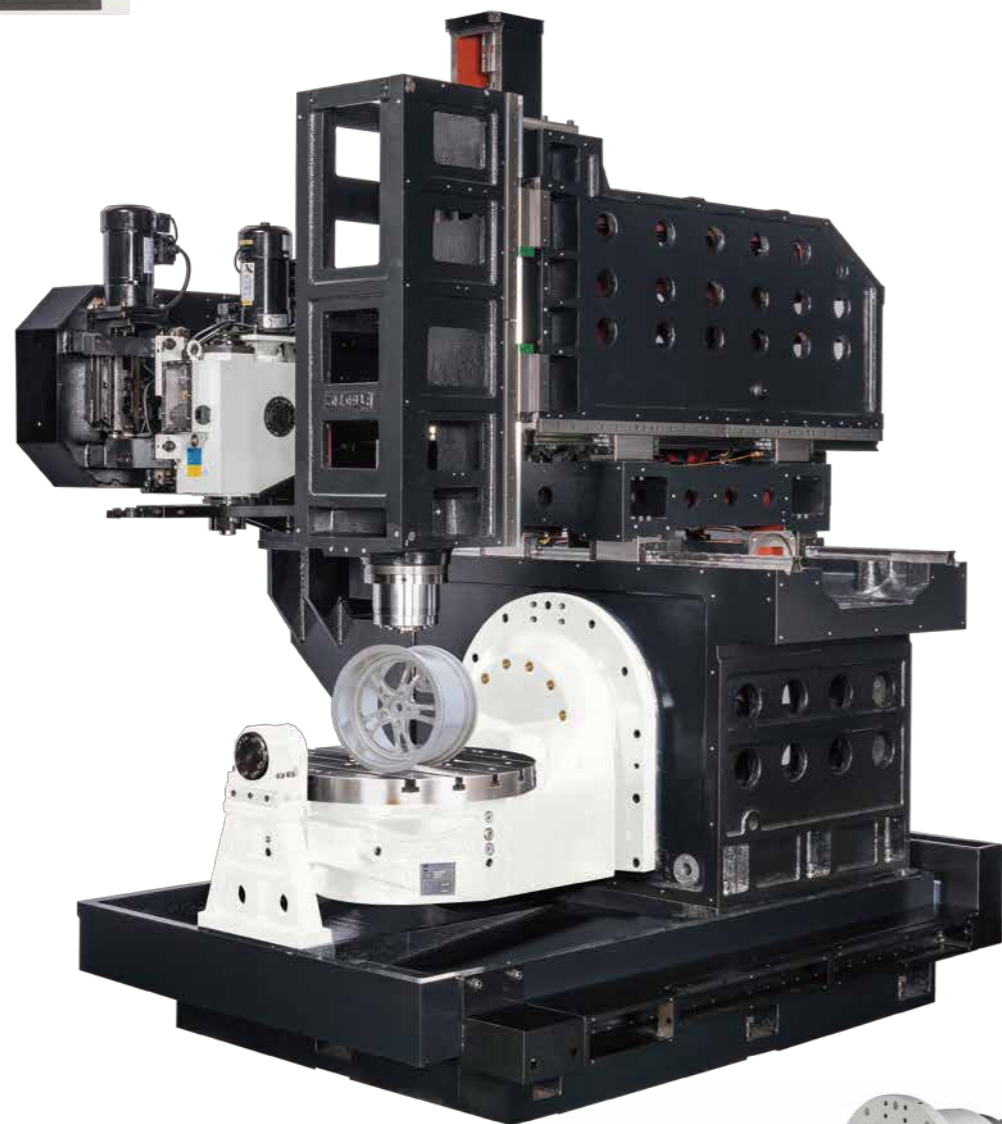
- Ergonomically positioned and swivelling control panel

6 Table

- Massive swivel-rotary table with \varnothing 400 mm

7 Chip Removal

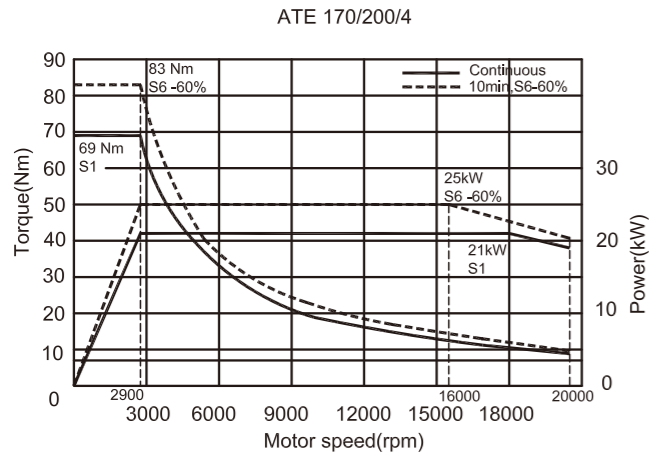
- The chips can be removed by an optional available hinge type chip conveyer



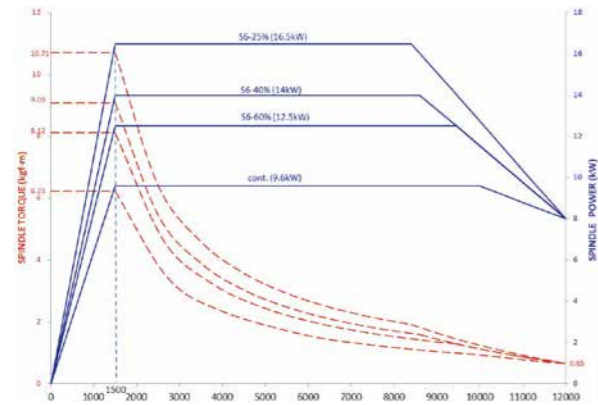
SPECIFICATION

Description	DMU-650SR	DMU-500SR	
TRAVEL			
X axis (mm/inch)	620mm	550mm	
Y axis (mm/inch)	520mm	400mm	
Z axis (mm/inch)	400mm	350mm	
TILTING TABLE Fix on X axis block			
Size: DIA (mm)	Ø650mm	Ø650mm	
Width of T-slot	5x18x100	5x18x100	
Rotary-axis(degree)	360°	360°	
Tilting-axis(degree)	-50+110°	-50+110°	
Max table load (Kgs).....Horizontal position	300Kgs	300Kgs	
Max table load (Kgs).....Vertical position	200Kgs	200Kgs	
AXES DRIVE MOTOR (FANUC/SIEMENS/HEIDENHAIN)			
X axis Servo Motor	QSY190C 28NM 7.2kW	α30 30NM 5.5kW	1FK7101 27NM 4.87kW
Y axis Servo Motor	QSY155D 81.6NM 5.7kW	α22 22NM 4.5kW	1FK7100 18NM 3.77kW
Z axis Servo Motor	QSY190C 28NM 7.2kW	α30 30NM 5.5kW	1FK7101 27NM 4.87kW
Rotary Axis Servo Motor	QSY190D 38NM 9.6kW	α30 30NM 5.5kW	1FK7101 27NM 4.87kW
Tilting Axis Servo Motor	QSY155C 17.7NM 5.0kW	α22 22NM 4.5kW	1FK7100 18NM 3.77kW
SPINDLE			
Spindle motor	SIEMENS	1PH8105 7kw/45NM	1PH8105 7kw/45NM
	HEIDENHAIN	QAN200	QAN200 10kw/63NM
	FANUC	αi1T8 75/11kw 47/17NM	αi1T8 75/11kw 47/17NM
Taper size - standard	BBT40		BBT40
Spindle Speed - Direct Drive	12000 rpm		12000 rpm
Spindle Speed - Built-in (Opt.)	ATE	24000 rpm	
Spindle Speed - Built-in (Opt.)	FANUC	BIL112S	
Spindle nose to table surface (mm/in)			
Spindle center to column surface (mm/in)	150~610 mm	150~500 mm	
FEEDRATE			
Cutting feedrate(mm/min) for X,Y,Z	1~15,000 mm		
Min. input increment			
Rapid traverse rates (mm/min) X, Y, Z	36/36/36 M/min		
C3 class Ballscrews (X/Y/Z) (Dia. x pitch)	(XYZ) Diz.40xPitch12mm	(XYZ) Diz.40xPitch12mm	
Linear roller guide X/Y/Z axes (mm)	(XYZ) 45mmx2sets+4 bock	(XYZ) 45mmx2sets+4 bock	
Machine Dimensions			
Size: Width x Length x Height (cm/in)	2500x2700x3000mm	2500x2700x3000mm	

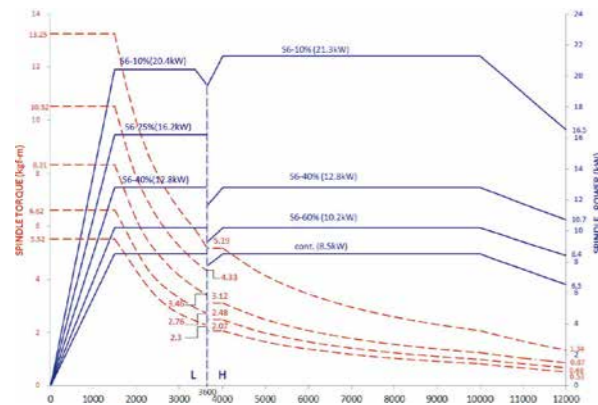
TORQUE POWER CHART



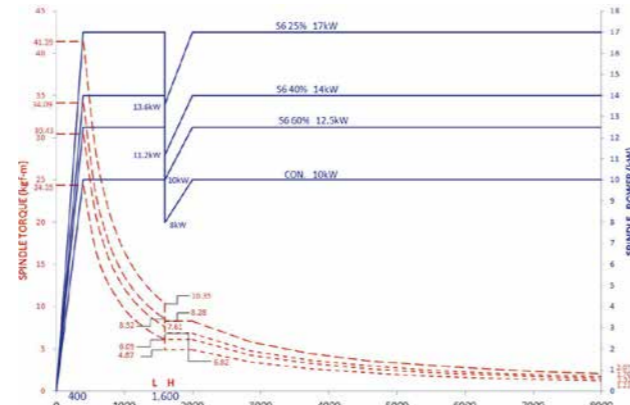
Heidenhain QAN200UH - 12,000 rpm Standard



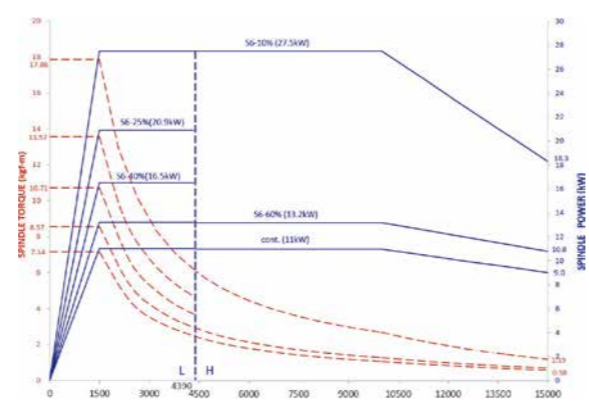
Siemens 1PH8107 - 12,000 rpm Standard



Heidenhain QAN200U - 8,000 rpm Gearbox Option



Siemens 1PH8131 - 15,000 rpm Option



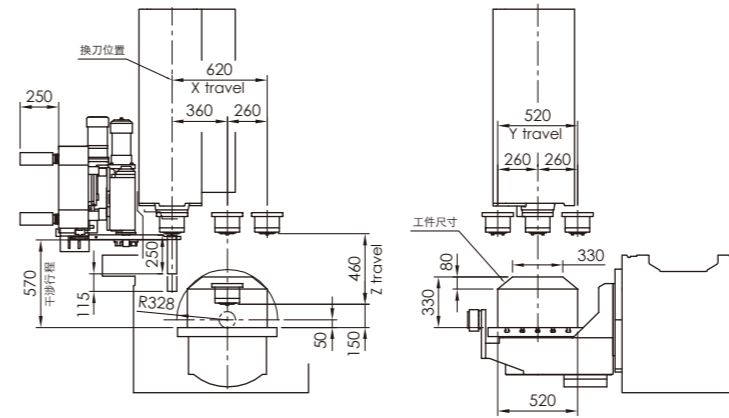
STANDARD ACCESSORIES

- BC axes with encoders
- Heat exchanger
- Remote handwheel
- Central lubrication system
- Full guarding (without top cover)
- High pressure water scour for chip removal
- Chip conveyor
- Coolant gun
- Air gun
- Spindle oil cooler
- LED work light
- Program light 3 colors
- Leveling bolts & plate
- Tools & box

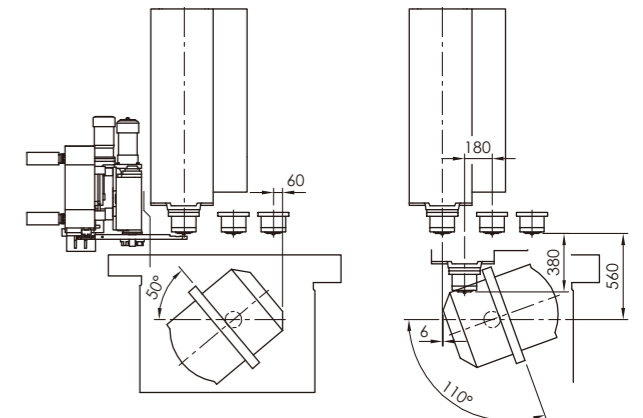
OPTIONAL ACCESSORIES

- CTS30BAR
- CE
- Linear scales
- chain type ATC 40T & 60T
- Air conditioner for electrical box

CUTTING AREA



INTERFERE AREA



MACHINE DIMENSION

