



**unilli** **TYRE**  
[www.unilli.com](http://www.unilli.com)



**unilli**

www.unilli.com



- 04 LIGHT TRUCK RADIAL
- 06 LIGHT TRUCK BIAS
- 08 SAND & DESERT
- 09 TRAILER
- 10 AGRICULTURAL
- 13 LAWN, GARDEN & GOLF CART
- 15 MOBILITY
- 18 WHEELBARROW
- 19 INDUSTRIAL
- 27 OB/FLAP



## COMPANY INTRODUCTION

Acme Rubber Ind. Co., Ltd. a subsidiary of Unilli Motor Co.,Ltd, is a specialized manufacturer of tyres. We produce various kinds and sizes of pneumatic rubber tyres and sell them to all over the world.

Tyre is a capital intensive and technical intensive industry.

Acme Rubber Ind. Co., Ltd has advanced equipments, perfect developments and quality examination and high efficient management. We insist that quality is the most important thing, and supply customers with the best products. We keep designing new products to meet market demands due to rapidly market change.

Though we are not the most famous tyre manufacturer, we have team of professional technicians & marketing staffs that we can supply you any of products you require from us. Acme Rubber Ind. Co., Ltd is your best choice.

# LIGHT TRUCK RADIAL



## UN-330

SIZE	Ply Rating	Unloaded Dimension				Rim Width (inch)	Max. Load		Max. Infl Pressure	
		SW		OD			kgs	lbs	PSI	kPa
		mm	inch	mm	inch					
155R13C	8	160	6.3	579	22.8	4.5	595	1323	65	448
165R13C	8	170	6.7	597	23.5	4.5	665	1477	65	448



## UN-331

SIZE	Ply Rating	Unloaded Dimension				Rim Width (inch)	Max. Load		Max. Infl Pressure	
		SW		OD			kgs	lbs	PSI	kPa
		mm	inch	mm	inch					
185R14C	8	190	7.5	649	25.6	5.5	843	1874	65	448



## UN-332

SIZE	Ply Rating	Unloaded Dimension				Rim Width (inch)	Max. Load		Max. Infl Pressure	
		SW		OD			kgs	lbs	PSI	kPa
		mm	inch	mm	inch					
195R15C	8	201	7.9	691	27.2	5.5	942	2094	65	448



## UN-335

SIZE	Ply Rating	Unloaded Dimension				Rim Width (inch)	Max. Load		Max. Infl Pressure	
		SW		OD			kgs	lbs	PSI	kPa
		mm	inch	mm	inch					
7.00R16LT	12	189	7.4	775	30.5	5.5	1220	2710	87	599
7.50R16LT	14	213	8.4	804	31.7	6	1498	3328	101	696



## UN-337

SIZE	Ply Rating	Unloaded Dimension				Rim Width (inch)	Max. Load		Max. Infl Pressure	
		SW		OD			kgs	lbs	PSI	kPa
		mm	inch	mm	inch					
195/75R16C	10	193	7.6	698	27.5	5.5	1051	2335	76	524



## UN-339

SIZE	Ply Rating	Unloaded Dimension				Rim Width (inch)	Max. Load		Max. Infl Pressure	
		SW		OD			kgs	lbs	PSI	kPa
		mm	inch	mm	inch					
7.00R15LT	12	189	7.4	751	29.6	5.5	1170	2601	87	599



## UN-341

SIZE	Ply Rating	Unloaded Dimension				Rim Width (inch)	Max. Load		Max. Infl Pressure	
		SW		OD			kgs	lbs	PSI	kPa
		mm	inch	mm	inch					
7.50R16LT	8	206	8.1	804	31.7	6	1120	2469	40	275

# LIGHT TRUCK

## BIAS TIRE



### UN-301

SIZE	Ply Rating	Unloaded Dimension				Rim Width (inch)	Max. Load		Max. Infl Pressure	
		SW		OD			kgs	lbs	PSI	kPa
		mm	inch	mm	inch					
7.00-15	10	195	7.7	759	29.9	5.5	1071	2379	76	524



### UN-302

SIZE	Ply Rating	Unloaded Dimension				Rim Width (inch)	Max. Load		Max. Infl Pressure	
		SW		OD			kgs	lbs	PSI	kPa
		mm	inch	mm	inch					
6.00-14	8	177	7.0	681	26.8	4.5	1071	2379	50	345



### UN-303

SIZE	Ply Rating	Unloaded Dimension				Rim Width (inch)	Max. Load		Max. Infl Pressure	
		SW		OD			kgs	lbs	PSI	kPa
		mm	inch	mm	inch					
7.00-15	12	195	7.7	759	29.9	5.5	1071	2379	76	524



### UN-305

SIZE	Ply Rating	Unloaded Dimension				Rim Width (inch)	Max. Load		Max. Infl Pressure	
		SW		OD			kgs	lbs	PSI	kPa
		mm	inch	mm	inch					
5.50-13	8	164	6.5	620	24.4	4	605	1344	62	427
7.00-16	10	196	7.7	783	30.8	5.5	1121	2491	73	503
8.25-16	8	242	9.5	855	33.7	6.5	1274	2832	45	310
8.25-16	14	242	9.5	855	33.7	6.5	1710	3767	84	579



### UN-306

SIZE	Ply Rating	Unloaded Dimension				Rim Width (inch)	Max. Load		Max. Infl Pressure	
		SW		OD			kgs	lbs	PSI	kPa
		mm	inch	mm	inch					
6.50-14	8	180	7.1	704	27.7	4.5	834	1854	60	413
6.50-16	10	182	7.2	746	29.4	4.5	1002	2226	71	489
7.00-16	12	196	7.7	783	30.8	5.5	1219	2709	87	599
7.50-16	14	214	8.4	806	31.7	6.0	1498	3329	94	648
8.25-17	8	240	9.4	860	33.9	6.5	1310	2910	45	310
8.25-18	8	250	9.8	882	34.7	6.5	1310	2910	45	310



### UN-307

SIZE	Ply Rating	Unloaded Dimension				Rim Width (inch)	Max. Load		Max. Infl Pressure	
		SW		OD			kgs	lbs	PSI	kPa
		mm	inch	mm	inch					
7.00-16	10	196	7.7	783	30.8	5.5	1121	2491	73	503



### UN-311

SIZE	Ply Rating	Unloaded Dimension				Rim Width (inch)	Max. Load		Max. Infl Pressure	
		SW		OD			kgs	lbs	PSI	kPa
		mm	inch	mm	inch					
7.50-16	8	214	8.4	808	31.8	6.0	1166	2590	62	427



### UN-312

SIZE	Ply Rating	Unloaded Dimension				Rim Width (inch)	Max. Load		Max. Infl Pressure	
		SW		OD			kgs	lbs	PSI	kPa
		mm	inch	mm	inch					
7.50-16	8	213	8.4	809	31.8	6.0	1166	2590	62	427

# SAND & DESERT



# TRAILER



## UN-321

SIZE	Ply Rating	Unloaded Dimension				Rim Width (inch)	Max. Load		Max. Infl Pressure	
		SW		OD			kgs	lbs	PSI	kPa
		mm	inch	mm	inch					
9.00-16	8	274	10.8	874	34.4	7.0	1112	2470	45	310
9.00-17	8	285	11.2	890	35.0	8.0	1310	2910	45	310
9.00-18	8	270	10.6	893	35.2	8.0	1310	2910	45	310



## UN-322

SIZE	Ply Rating	Unloaded Dimension				Rim Width (inch)	Max. Load		Max. Infl Pressure	
		SW		OD			kgs	lbs	PSI	kPa
		mm	inch	mm	inch					
9.00-16	8	274	10.8	874	34.4	7.0	1112	2470	45	310
9.00-17	8	285	11.2	890	35.0	7.5	1310	2910	45	310



## UN-305

SIZE	Ply Rating	Unloaded Dimension				Rim Width (inch)	Max. Load		Max. Infl Pressure	
		SW		OD			kgs	lbs	PSI	kPa
		mm	inch	mm	inch					
5.50-13	8	164	6.5	620	24.4	4.0	605	1344	62	427



## UN-801

SIZE	Ply Rating	Unloaded Dimension				Rim Width (inch)	Max. Load		Max. Infl Pressure	
		SW		OD			kgs	lbs	PSI	kPa
		mm	inch	mm	inch					
4.80/4.00-8	8	110	4.3	401	15.8	3.0	345	760	60	420



## UN-802

SIZE	Ply Rating	Unloaded Dimension				Rim Width (inch)	Max. Load		Max. Infl Pressure	
		SW		OD			kgs	lbs	PSI	kPa
		mm	inch	mm	inch					
5.00-10	8	142	5.6	514	20.2	3.5	426	947	58	400



## UN-803

SIZE	Ply Rating	Unloaded Dimension				Rim Width (inch)	Max. Load		Max. Infl Pressure	
		SW		OD			kgs	lbs	PSI	kPa
		mm	inch	mm	inch					
5.00-12	8	150	5.9	584	23.0	3.5	481	1069	57	393

# AGRICULTURAL



## UN-101



SIZE	Ply Rating	Unloaded Dimension				Rim Width (inch)	Max. Load		Max. Infl Pressure	
		SW		OD			kgs	lbs	PSI	kPa
		mm	inch	mm	inch					
4.00-6	4	112	4.4	376	14.8	3.0	190	419	40	280
4.00-8	4	112	4.4	423	16.7	3.0	230	507	40	280
11.00-16	10	306	12.0	954	37.5	8.5			40	280

## UN-102



SIZE	Ply Rating	Unloaded Dimension				Rim Width (inch)	Max. Load		Max. Infl Pressure	
		SW		OD			kgs	lbs	PSI	kPa
		mm	inch	mm	inch					
3.50-6	4	90	3.5	330	13.0	2.5	164	364	36	250
4.00-8	4	112	4.4	399	15.7	3.0	153	340	40	280
4.00-10	4	117	4.6	486	19.1	3.0	169	375	30	207
4.50-10	4	127	5.0	510	20.1	3.0	203	452	30	207
5.00-12	6	139	5.5	571	22.5	3.0	347	771	36	248
6.00-12	6	160	6.3	630	25.0	4.0	402	893	40	276

## UN-103



SIZE	Ply Rating	Unloaded Dimension				Rim Width (inch)	Max. Load		Max. Infl Pressure	
		SW		OD			kgs	lbs	PSI	kPa
		mm	inch	mm	inch					
3.50-5	4	90	3.5	308	12.1	2.5	149	331	36	250
3.50-7	4	90	3.5	362	14.3	2.5	179	397	40	280
4.00-7	4	112	4.4	418	16.5	3.0	180	397	40	280
5.00-10	6	140	5.5	518	20.4	3.5	258	573	32	220
5.00-12	6	139	5.5	570	22.4	3.0	347	771	36	248
5.50-13	8	158	6.2	625	24.6	4.0	614	1364	50	345
6.00-14	8	182	7.2	681	26.8	4.5	614	1364	50	345

## UN-106



SIZE	Unloaded Dimension				Rim Width (inch)	Max. Infl Pressure	
	SW		OD			PSI	kPa
	mm	inch	mm	inch			
20x10.00-10	238	9.4	501	19.7	8.0	32	220

## UN-107



SIZE	Ply Rating	Unloaded Dimension				Rim Width (inch)	Max. Infl Pressure	
		SW		OD			PSI	kPa
		mm	inch	mm	inch			
16x7.00-8	4	170	6.7	392	15.4	5.5	28	193

## UN-111



SIZE	Unloaded Dimension				Rim Width (inch)	Max. Infl Pressure	
	SW		OD			PSI	kPa
	mm	inch	mm	inch			
16x6.50-8	162	6.4	405	15.9	5.5	28	193

## UN-113



SIZE	Unloaded Dimension				Rim Width (inch)	Max. Load		Max. Infl Pressure	
	SW		OD			kgs	lbs	PSI	kPa
	mm	inch	mm	inch					
5.00-9	146	5.7	494	19.4	3.5	302	672	32	220

## UN-114



SIZE	Ply Rating	Unloaded Dimension				Rim Width (inch)	Max. Infl Pressure	
		SW		OD			PSI	kPa
		mm	inch	mm	inch			
19x8.00-10	4	195	7.7	483	19.0	6.5	34	234

# AGRICULTURAL



**LAWN, GARDEN  
& GOLF CART**



**UN-305**

SIZE	Unloaded Dimension				Rim Width (inch)	Max. Load		Max. Infl Pressure	
	SW		OD			kgs	lbs	PSI	kPa
	mm	inch	mm	inch					
5.50-13	164	6.5	620	24.4	4.0	605	1344	62	427



**UN-801**

SIZE	Ply Rating	Unloaded Dimension				Rim Width (inch)	Max. Load		Max. Infl Pressure	
		SW		OD			kgs	lbs	PSI	kPa
		mm	inch	mm	inch					
4.80/4.00-8	4	109	4.3	401	15.8	3.0	218	481	36	250



**UN-802**

SIZE	Unloaded Dimension				Rim Width (inch)	Max. Load		Max. Infl Pressure	
	SW		OD			kgs	lbs	PSI	kPa
	mm	inch	mm	inch					
5.00-10	142	5.6	514	20.2	3.5	426	947	43	296



**UN-803**

SIZE	Unloaded Dimension				Rim Width (inch)	Max. Load		Max. Infl Pressure	
	SW		OD			kgs	lbs	PSI	kPa
	mm	inch	mm	inch					
5.00-12	150	5.9	584	23.0	3.5	481	1069	57	393



**UN-401**

SIZE	Ply Rating	Unloaded Dimension				Rim Width (inch)	Max. Infl Pressure	
		SW		OD			PSI	kPa
		mm	inch	mm	inch			
15x6.00-6	4	158	6.2	358	14.1	4.5	35	250
18x8.50-8	4	210	8.3	464	18.2	7.0	22	158



**UN-402**

SIZE	Unloaded Dimension				Rim Width (inch)	Max. Infl Pressure	
	SW		OD			PSI	kPa
	mm	inch	mm	inch			
16x6.50-8	171	6.7	405	16.0	5.5	30	207



**UN-403**

SIZE	Unloaded Dimension				Rim Width (inch)	Max. Infl Pressure	
	SW		OD			PSI	kPa
	mm	inch	mm	inch			
18x6.50-8	180	7.0	458	18.1	5.5	40	276
18x8.50-8	210	8.3	468	18.4	7.0	30	207



# LAWN, GARDEN & GOLF CART



## UN-405

SIZE	Unloaded Dimension				Rim Width (inch)	Max. Infl Pressure	
	SW		OD			PSI	kPa
	mm	inch	mm	inch			
16x6.50-8	171	6.7	405	16.0	5.5	30	207



## UN-407

SIZE	Unloaded Dimension				Rim Width (inch)	Max. Load		Max. Infl Pressure	
	SW		OD			kgs	lbs	PSI	kPa
	mm	inch	mm	inch					
205/50-10	193	7.6	468	18.4	5.5	299	665	30	207
205/65-10	205	8.1	520	20.5	5.5	412	916	35	241



## UN-409

SIZE	Ply Rating	Unloaded Dimension				Rim Width (inch)	Max. Load		Max. Infl Pressure	
		SW		OD			kgs	lbs	PSI	kPa
		mm	inch	mm	inch					
13x5.00-6	4	137	5.4	328	12.9	4.5	259	570	30	200



## UN-410

SIZE	Ply Rating	Unloaded Dimension				Rim Width (inch)	Max. Load		Max. Infl Pressure	
		SW		OD			kgs	lbs	PSI	kPa
		mm	inch	mm	inch					
190/50-12	6	200	7.9	529	20.8	7.0	495	1091	38	262



# MOBILITY SCOOTER



## UN-168A

SIZE	Ply Rating	Unloaded Dimension				Rim Width (inch)	Max. Infl Pressure	
		SW		OD			PSI	kPa
		mm	inch	mm	inch			
70/65-8	4	80	3.1	306	12.0	2.5	32	225
90/80-8 (3.00-8)	4	84	3.3	352	13.9	2.5	32	225



## UN-169

SIZE	Ply Rating	Unloaded Dimension				Rim Width (inch)	Max. Infl Pressure	
		SW		OD			PSI	kPa
		mm	inch	mm	inch			
80/80-8	4	83	3.3	338	13.3	2.0	32	225

※ Black & Gray Both Available



## UN-221

SIZE	Ply Rating	Unloaded Dimension				Rim Width (inch)	Max. Infl Pressure	
		SW		OD			PSI	kPa
		mm	inch	mm	inch			
3.50-5	4	93	3.7	305	12.0	2.0	50	350



## UN-222

SIZE	Ply Rating	Unloaded Dimension				Rim Width (inch)	Max. Infl Pressure	
		SW		OD			PSI	kPa
		mm	inch	mm	inch			
4.00-5	4	105	4.1	323	12.7	2.0	50	350



# MOBILITY SCOOTER



## UN-223

SIZE	Ply Rating	Unloaded Dimension				Rim Width (inch)	Max. Infl Pressure	
		SW		OD			PSI	kPa
		mm	inch	mm	inch			
90/70-6	4	93	3.7	279	11.0	2.5	32	225
90/40-8	4	84	3.3	284	11.2	2.5	32	225
100/50-6	4	96	3.8	296	11.7	2.5	32	225
100/50-8	4	97	3.8	312	12.3	2.5	32	225
100/60-8	4	88	3.5	336	13.2	2.5	32	225
115/55-8	4	116	4.6	338	13.3	4.0	32	225
120/70-8	4	120	4.7	362	14.3	4.0	32	225



## UN-225

SIZE	Ply Rating	Unloaded Dimension				Rim Width (inch)	Max. Infl Pressure	
		SW		OD			PSI	kPa
		mm	inch	mm	inch			
3.00-4	4	91	3.6	269	10.6	2.0	50	350



## UN-226

SIZE	Ply Rating	Unloaded Dimension				Rim Width (inch)	Max. Infl Pressure	
		SW		OD			PSI	kPa
		mm	inch	mm	inch			
2.80/2.50-5	4	70	2.8	226	8.9	2.0	50	350



## UN-227

SIZE	Ply Rating	Unloaded Dimension				Rim Width (inch)	Max. Infl Pressure	
		SW		OD			PSI	kPa
		mm	inch	mm	inch			
80/80-8	4	76	3.0	328	12.9	2.5	32	225



## UN-228

SIZE	Ply Rating	Unloaded Dimension				Rim Width (inch)	Max. Infl Pressure	
		SW		OD			PSI	kPa
		mm	inch	mm	inch			
90/70-8	4	92	3.6	327	12.9	2.5	32	225



## UN-229

SIZE	Ply Rating	Unloaded Dimension				Rim Width (inch)	Max. Infl Pressure	
		SW		OD			PSI	kPa
		mm	inch	mm	inch			
110/50R6.5	4	106	4.2	276	10.9	2.0	36	225



## UN-502A

SIZE	Ply Rating	Unloaded Dimension				Rim Width (inch)	Max. Infl Pressure	
		SW		OD			PSI	kPa
		mm	inch	mm	inch			
90/80-8	4	86	3.4	354	13.9	2.5	32	225



## UN-511

SIZE	Ply Rating	Unloaded Dimension				Rim Width (inch)	Max. Load		Max. Infl Pressure	
		SW		OD			kgs	lbs	PSI	kPa
		mm	inch	mm	inch					
130/90-6	53J	139	5.5	371	14.6	4.0	206	454	25	175



# WHEELBARROW

# INDUSTRIAL PNEUMATIC TYRE

## UN-231



SIZE	Ply Rating	Unloaded Dimension				Rim Width (inch)	Max. Infl Pressure	
		SW		OD			PSI	kPa
		mm	inch	mm	inch			
4.10/3.50-4	4	90	3.5	267	10.5	2.5	50	350
4.10/3.50-5	4	86	3.4	290	11.4	2.5	50	350
4.10/3.50-6	4	94	3.7	328	12.9	2.5	50	350
4.00-6	4	106	4.2	340	13.4	2.5	50	350

## UN-232



SIZE	Ply Rating	Unloaded Dimension				Rim Width (inch)	Max. Infl Pressure	
		SW		OD			PSI	kPa
		mm	inch	mm	inch			
2.50-4	4	56	2.2	220	8.7	1.5	50	350

## UN-7101



SIZE	Ply Rating	Unloaded Dimension				Rim Width (inch)	Max. Load		Max. Infl Pressure	
		SW		OD			kgs	lbs	PSI	kPa
		mm	inch	mm	inch					
3.50-8	4	96	3.8	386	15.2	2.5	170	375	36	250
4.00-8	4	96	3.8	386	15.2	2.5	218	481	36	250

## UN-7311



SIZE	Ply Rating	Unloaded Dimension				Rim Width (inch)	Max. Infl Pressure	
		SW		OD			PSI	kPa
		mm	inch	mm	inch			
80/65-8	4	85	3.3	303	11.9	2.5	32	225

## UN-201



SIZE	Ply Rating	Unloaded Dimension				Rim Width (inch)	Max. Infl Pressure	
		SW		OD			PSI	kPa
		mm	inch	mm	inch			
18x7-8	16	164	6.5	440	17.3	4.25	120	827
5.00-8	8	131	5.2	460	18.1	3.5	100	689
21x8-9	14	190	7.5	516	20.3	6	120	827
6.00-9	10	151	5.9	528	20.8	4.0	100	689
6.50-10	12	171	6.7	590	23.2	5.0	100	689
7.00-12	12	180	7.1	674	26.5	5.0	100	689
7.00-15	12	192	7.6	735	28.9	5.5	110	758
7.50-16	12	201	7.9	807	31.8	6.0	110	758
8.15-15 (28x9-15)	14	205	8.1	702	27.6	6.5	110	758
8.25-15	14	249	9.8	840	33.1	6.5	120	827

## UN-202



SIZE	Ply Rating	Unloaded Dimension				Rim Width (inch)	Max. Infl Pressure	
		SW		OD			PSI	kPa
		mm	inch	mm	inch			
10-16.5	10	266	10.5	790	31.1	8.25	50	345
12-16.5	12	316	12.4	834	32.8	9.75	60	413

## UN-203



SIZE	Ply Rating	Unloaded Dimension				Rim Width (inch)	Max. Infl Pressure	
		SW		OD			PSI	kPa
		mm	inch	mm	inch			
10-16.5	10	276	10.9	784	30.9	8.25	76	525
12-16.5	12	312	12.3	840	33.1	9.75	81	560
10R16.5	10	283	11.1	770	30.3	8.25	76	525
12R16.5	12	324	12.8	825	32.5	9.75	81	560

# INDUSTRIAL SOLID TYRE



**PATTERN 601**  
Non-marking

SIZE	RIM	O.D. m/m	S.W. m/m	WEIGHT KG	CAPACITY 25 Km/H
15x4 1/2-8	3.00	381	115	10	850
16x6-8	4.33	415	148	15.5	1150
5.00-8	3.00	455	125	16.5	1150
18x7-8	4.33	455	170	22	1800
6.00-9	4.00	540	150	28	1600
21x8-9	6.00	525	190	35	2400
140/55-9	4.00	380	135	10.5	1000
6.50-10	5.00	575	162	35.5	2000
200/50-10	6.50	460	205	24.5	1900
23x9-10	6.50	580	220	49	3000
7.00-12	5.00	667	170	48	2500
23x10-12	8.00	580	245	50	3000
27x10-12	8.00	675	245	74	3500
8.15-15	7.00	710	211	62	3000
250-15	7.00/7.50	710	238	71	3800
8.25-15	6.50	820	206	89	4200
300-15	8.00	820	260	110	5000



**PATTERN 601**  
Click

SIZE	RIM	O.D. m/m	S.W. m/m	WEIGHT KG	CAPACITY 25 Km/H
15x4 1/2-8	3.00	381	115	10	850
16x6-8	4.33	415	148	15.5	1150
5.00-8	3.00	455	125	16.5	1150
18x7-8	4.33	455	170	22	1800
6.00-9	4.00	540	150	28	1600
21x8-9	6.00	525	190	35	2400
140/55-9	4.00	380	135	10.5	1000
6.50-10	5.00	575	162	35.5	2000
200/50-10	6.50	460	205	24.5	1900
23x9-10	6.50	580	220	49	3000
7.00-12	5.00	667	170	48	2500
23x10-12	8.00	580	245	50	3000
23x12-12	10.00	580	295	60	3300
27x10-12	8.00	675	245	74	3500
7.00-15	5.50	740	178	61	3000
7.50-15	6.00	800	184	75	3400
8.15-15	7.00	710	211	62	3000
250-15	7.00/7.50	710	238	71	3800
8.25-15	6.50	820	206	89	4200
300-15	8.00	820	260	110	5000
28x12.5-15	9.75	718	310	95	4800
355/65-15	9.75	840	360	158	6200



**PATTERN 601**

SIZE	RIM	O.D. m/m	S.W. m/m	WEIGHT KG	CAPACITY 25 Km/H
3.50-5	2.75/3.00	292	100	5.5	550
4.00-8	2.50/3.00/3.75	405	105	11	800
15x4 1/2-8	3.00	381	115	10	850
16x5-8	3.75	406	125	14	1000
16x6-8	4.33	415	148	15.5	1150
5.00-8	3.00	455	125	16.5	1150
18x7-8	4.33	455	170	22	1800
6.00-9	4.00	540	150	28	1600
21x8-9	6.00	525	190	35	2400
140/55-9	4.00	380	135	10.5	1000
400-10	2.75	410	100	8.5	850
6.50-10	5.00	575	162	35.5	2000
7.50-10	5.50	650	175	53	2500
200/50-10	6.50	460	205	24.5	1900
23x9-10	6.50	580	220	49	3000
4.50-12	3.00	535	115	18	1300
7.00-12	5.00	667	170	48	2500
8.25-12	5.00	714	188	60.5	3400
23x7-12	5.00	560	174	29.5	1900
23x10-12	8.00	580	245	50	3000
23x12-12	10.00	580	295	60	3300
27x10-12	8.00	675	245	74	3500
27x6.5-15	5.50	665	180	42.5	2500
5.50-15	4.50	665	155	36	1900
6.00-15	4.50	665	155	36	1900
7.00-15	5.50/6.00	740	178	61	3000
7.50-15	5.50/6.00	800	184	75	3400
8.15-15	7.00	710	211	62	3000
250-15	7.00/7.50	710	238	71	3800
8.25-15	6.50	820	206	89	4200
300-15	8.00	820	260	110	5000
28x12.5-15	9.75	718	310	94.5	4800
32x12.5-15	9.75	820	300	130	5800
355/65-15	9.75	840	360	157	6200
7.50-16	5.50/6.00	800	184	73	3400
8.25-16	6.00	845	212	95	3800
9.00-16	7.00	845	237	107.5	4500
26x8-16	6.00	650	175	43	2700
28x9-16	6.00	717	210	56	3000
8.25-20	6.00/6.5	980	220	125	5000
9.00-20	7.00	980	220	125	5000
10.00-20	7.00/7.50/8.00	1040	250	166	6000
11.00-20 SU	7.00/7.50/8.00	1040	250	166	6000
11.00-20 SUW	7.50	1040	275	185	6500
11.00-20	7.50/8.00/8.50	1100	265	211	6500
12.00-20	7.50/8.00/8.50	1100	265	211	6500
12.00-20	8.50	1040	305	203	7000
12.00-20	8.00/8.50	1140	295	248	7000
16/70-20	8.50	1050	305	208	7500
380/70-20	12.00	1040	385	265	9000
13.00-20	10.00	1140	335	287	8500
14.00-20	10.00	1250	350	380	10000
305/70-24	8.50	1040	305	176	7500
12.00-24	8.00/8.50	1210	304	264	7800
13.00-24	8.50	1250	320	315	8800
14.00-24	10.00	1320	340	386	10500
14.00-25	10.00/11.25	1320	340	386	10500
16.00-25	11.25	1500	410	635	13000



## PATTERN 601H

SIZE	RIM	O.D.	S.W.	WEIGHT	CAPACITY
		m/m	m/m		
5.00-8	3.00	457	120	15.5	1035
18 7-8	4.33	455	170	21.2	1620
6.00-9	4.00	540	150	27.5	1440
21 8-9	6.00	525	184	32.2	2160
6.50-10	5.00	575	160	34.5	1800
7.00-12	5.00	667	170	48	2250
8.15-15	7.00	710	210	61	2700
250-15	7.00/7.50	710	238	70.5	3420
8.25-15	6.50	845	212	96	3780
300-15	8.00	840	280	116	4500
7.50-16	6.00	800	195	72	3060
8.25-20	6.50	980	220	123	4500
9.00-20	7.00	980	220	123	4500
10.00-20	7.00/7.50/8.00	1040	250	163	5400
11.00-20 SU	7.00/7.50/8.00	1040	250	163	5400
11.00-20	7.50/8.00/8.50	1100	265	208	5850
12.00-20	8.00/8.50	1140	295	245	6300



## PATTERN 602

SIZE	RIM	O.D.	S.W.	WEIGHT	CAPACITY
		m/m	m/m		
15x4 1/2-8	3.00	380	115	9.5	850
16x6-8	4.33	411	150	15.5	1150
5.00-8	3.00	457	130	17.5	1150
18x7-8	4.33	457	165	21.5	1800
6.00-9	4.00	520	158	27.5	1600
21x8-9	6.00	528	190	34.5	2400
6.50-10	5.00	583	166	38	2000
200/50-10	6.50	462	195	24	1900
23x9-10	6.50	588	210	49	3000
7.00-12	5.00	660	170	48	2500
23x10-12	8.00	588	240	51	3000
27x10-12	8.00	685	240	76	3500
8.15-15	7.00	710	212	63	3000
250-15	7.00/7.50	751	240	79.5	3800
8.25-15	6.50	832	210	93	4200
300-15	8.00	832	265	117	5000



## PATTERN 608

SIZE	RIM	O.D.	S.W.	WEIGHT	CAPACITY
		m/m	m/m		
17 3/4x6 1/2-10	5.00	450	165	18.6	1500
180/60-10	5.00	450	165	18.6	1500
22 1/4x7 1/2-15	5.50	565	190	27.6	2400
8.25-20	6.00/6.50	980	220	126	5000
9.00-20	7.00	980	220	126	5000
11.00-20	7.00/7.50/8.00	1040	250	170	6500
10.00-20	7.00/7.50/8.00	1010	250	159	6000
12.00-20	7.50/8.00/8.50	1090	265	207	7000
12.00-24	8.00/8.50	1200	300	268	7800
14.00-24	10.00	1330	350	413	10500
14.00-25	10.00	1330	350	408	10500



## PATTERN 701

SIZE	RIM	O.D.	S.W.	WEIGHT	CAPACITY
		m/m	m/m		
6.00-9	4.00	540	150	28.5	1600
7.00-12	5.00	667	172	48.5	2500



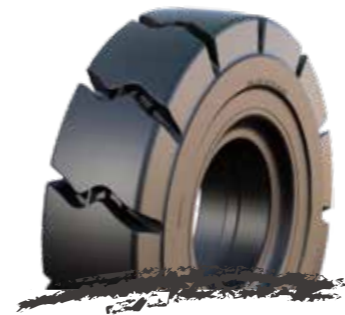
## PATTERN 702

SIZE	RIM	O.D.	S.W.	WEIGHT	CAPACITY
		m/m	m/m		
5.00-8	3.00	463	120	16.5	1150
18x5.5-8	3.50/4.33	457	140	19	1200
6.00-9	4.00	540	163	29.5	1600
6.50-10	5.00	580	172	37.5	2000
17 1/2x6-10	5.00	452	150	16.5	1400
200/50-10	6.50	452	195	23.5	1900
7.00-12	5.00	660	182	48.5	2500
8.15-15	7.00	717	210	60.5	3000
22 1/4x7 1/2-15	5.50	580	172	26.5	2100



## PATTERN 704

SIZE	RIM	O.D.	S.W.	WEIGHT	CAPACITY
		m/m	m/m		
13x4-5	2.75	314	96	5.5	550
3.50-5	2.75/3.00	292	100	6.4	550
4.00-8	2.50/3.00/3.75	406	108	11.5	800
4.80-8	3.00/3.75	406	115	12.8	900
12x4-8	3.00	323	100	5.3	650
15x4-8	3.00	378	91	6.5	760
16x5-9	3.50	406	125	12	1100
16x5-12	3.75	406	124	7.5	850
6.00-20	4.50	850	160	60	3500



## PATTERN 805

SIZE	RIM	O.D.	S.W.	WEIGHT	CAPACITY
		m/m	m/m		
14.00-24	10.00	1350	360	406	10500
14.00-25	10.00	1350	360	402	10500
18.00-25	13.00	1615	490	885	15000

## PATTERN 902



SIZE	RIM	O.D.	S.W.	WEIGHT	CAPACITY
		m/m	m/m	KG	25 Km/H
5.00-8	3.00	457	125	17.5	1150
18x7-8	4.33	455	170	24	1800
6.00-9	4.00	540	150	29.5	1600
21x8-9	6.00	525	190	36.5	2400
6.50-10	5.00	575	160	37	2000
23x9-10	6.50	580	220	51	3000
7.00-12	5.00	667	170	49.5	2500
205/60-15	5.50	630	200	42	2800
8.15-15	7.00	710	211	64	3000
8.25-15	6.50	838	210	96	4500
9.00-20	7.00	980	220	135	5000
10.00-20	7.00/7.50/8.00	1040	250	178	6000
12.00-20	8.00/8.50	1110	265	220	7000
355/50-20	10.00	863	315	131	6800
12.00-24	8.00/8.50	1200	295	268	7800
14.00-24	10.00	1340	350	431	10500
16.00-25	11.25	1500	410	654	13000
18.00-25	13.00	1610	460	880	15000

## WHEEL LOADER

### PATTERN 601H



SIZE	RIM	O.D.	S.W.	WEIGHT	CAPACITY
		m/m	m/m	KG	25 Km/H
7.50-16	6.00	805	194	71	2600
8.25-16	6.00	845	212	94	3300
30x10-16	6.00	767	240	75	2200
33x12-16	8.00	845	275	110	3200
13.00-24	8.50	1250	320	310	6800
14.00-24	10.00	1320	340	377	8000
50x16-24	11.50	1250	400	388	8000
16.00-25	11.25	1500	410	600	9000
17.5-25	14.00	1340	440	510	8500
20.5-25	17.00	1480	520	765	9600
23.5-25	19.50	1610	590	1042	12000
26.5-25	22.00	1720	650	1345	14500
29.5-25	25.00	1870	740	1855	18500
35/65-33	28.00	2030	850	2360	24000

### PATTERN 601



SIZE	RIM	O.D.	S.W.	WEIGHT	CAPACITY
		m/m	m/m	KG	25 Km/H
13.00-24	8.50	1250	320	315	8800
14.00-24	10.00	1320	340	386	10500
17.5-25	14.00	1340	440	523	12000
20.5-25	17.00	1480	520	781	14000
23.5-25	19.50	1610	590	1062	16500
26.5-25	22.00	1720	650	1372	20500
29.5-25	25.00	1870	740	1942	23000

## SKID LOADER



### PATTERN 902H

SIZE	RIM	O.D.	S.W.	WEIGHT	CAPACITY
		m/m	m/m	KG	25 Km/H
7.50-16	6.00	800	215	77	2800
8.25-16	6.00	838	210	90	3600
30x10-20	7.00	767	248	68	2500
32x10-20	7.00	812	250	80	2900
33x12-20	8.00	820	280	93	3300
14.00-24	10.00	1340	350	410	8000
16.00-25	11.25	1500	410	640	10000
18.00-25	13.00	1610	460	850	12000
17.5-25	14.00	1340	440	525	9500
20.5-25	17.00	1500	510	795	10500
23.5-25	19.50	1610	590	1085	13000
26.5-25	22.00	1720	650	1380	16000

### PATTERN 801H



SIZE	RIM	O.D.	S.W.	WEIGHT	CAPACITY
		m/m	m/m	KG	25 Km/H
5.70-12	4.00	570	146	25.5	1300
23x8.5-12	5.00	580	190	34	1700
27x8.5-15	5.50	675	200	46.5	2100
27x12-15	8.50	675	280	69	2600
30x8.5-16	6.00	762	200	55	2000
30x10-16	6.00	760	240	69	2200
31x10.5-16	6.00	807	235	80	2400
33x12-16	8.00	820	286	99.5	3200
32.5x15-16	11.25	820	374	122	3600
30x10-18	7.00	767	240	62.5	2200
31x10.5-18	7.00	807	235	73.5	2400
30x10-20	7.00	767	240	56	2200
31x10.5-20	7.00	807	235	66	2400
32x10-20	7.00	820	250	70.5	2600
33x12-20	8.00	830	285	85	3000
36.5x12-20	8.00	935	299	126	3600
36.5x14-20	11.00	920	350	149	4000
38.5x14-20	11.00	970	342	170	4200
15.00-20	11.00	965	345	168	4200
18.00-20	12.00	1060	430	275	6800
13.00-24	8.50	1270	320	288	6800
14.00-24	8.50/10.00	1340	340	370	8000
15.5-25	11.25	1270	390	355	7800
17.5-25	14.00	1340	440	458	8500
23.5-25	19.50	1620	580	965	12000
26.5-25	22.00	1750	670	1353	14500



## PATTERN 805H

SIZE	RIM	O.D. m/m	S.W. m/m	WEIGHT KG	CAPACITY 25 Km/H
14.00-24	10.00	1350	360	396	8400
14.00-25	10.00	1350	360	390	8400
18.00-25	13.00	1615	490	850	12000

## TELHANDLER



## PATTERN 801H

SIZE	RIM	O.D. m/m	S.W. m/m	WEIGHT KG	CAPACITY 25 Km/H
33x12-20	8.00	840	285	89	3300
385/70-20	10.00	1060	360	227	6500
445/65-20	12.00	1060	430	275	7500
385/65-24	10.00	1060	360	192	6500
445/65-24	12.00	1150	430	290	8500
13.00-24	8.50	1270	320	286	6800
14.00-24	8.50/10.00	1340	340	370	8000

## MINING



## PATTERN 601

SIZE	RIM	O.D. m/m	S.W. m/m	WEIGHT KG	CAPACITY 25 Km/H
45x13	-	1140	325	408	10000
45x16	-	1140	400	460	12500
52x13	-	1320	340	562	14500
52x18	-	1320	450	804	16500
52x23.5	-	1320	605	1008	18500
1320x600	-	1,320	600	1025	18500
1320x630	-	1,320	630	1100	20000
1320x660	-	1,320	660	1270	22000
1320x710	-	1,320	710	1325	23000
1500x410	-	1,500	410	930	18000
1516x470	-	1500	470	1000	20000
1755x455	-	1750	455	1223	22000
1755x530	-	1750	530	1450	25000
1840x580	-	1870	600	1961	28000

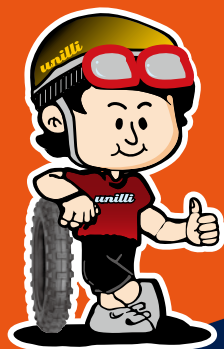
# OB/FLAP



### Specifications

- |    |                       |
|----|-----------------------|
| 1  | 1000/1100-20 (200-20) |
| 2  | 900/1000-20 (195-20)  |
| 3  | 825/750-16 Reinforced |
| 4  | 825/750-16            |
| 5  | 825/750-15            |
| 6  | 600-14                |
| 7  | 550-13                |
| 8  | 700-12                |
| 9  | 650-10                |
| 10 | 600-9                 |
| 11 | 500-8                 |





UNILLI MOTOR CO., LTD. ACME RUBBER IND. CO., LTD.

Factory1 : No.45, Singong 6th Rd., Tianjhong Township, Changhua County 52046, Taiwan

TEL : +886-4-8760061 FAX : +886-4-8760097

E-mail : unilli-tyre1@unilli.com

Factory2 : No.1-6, Douyuan E. Rd., Pitou Township, Changhua County 52345, Taiwan

TEL : +886-4-8877052 FAX : +886-4-8877349

E-mail : unilli-tyre@unilli.com

www.unilli.com