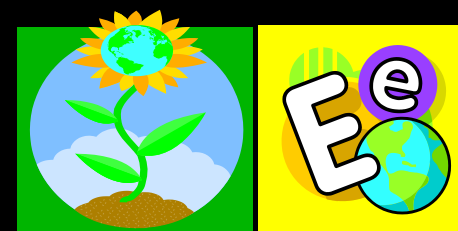


Pure & Plug-in Hybrid Electric Buses

Environmental Friendly Series



Tel.: 886 3 3520277 (Rep.)

Fax: 886 3 3521885

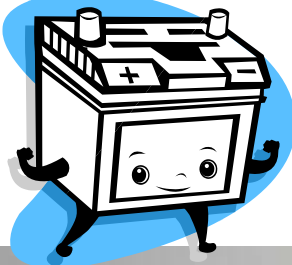
www.iji.com.tw

www.taiwantrade.com/iji



IJI Vehicle Industry Co., Ltd.

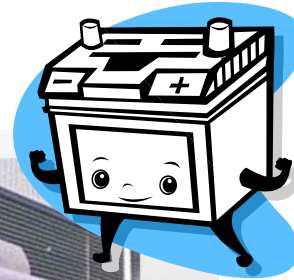
CRYSTAL_BEV_ CityBus(12m)



Item	Configurations
Model	CRYSTAL_BEV_CityBus
Dimension (mm)	12000x2500x3240
Max. Gradeability	28%
Max. Speed	69km/h
Motor	Prestolite inverter motor (TM4)
F/R Axle	7.5T/13.0T
Structure	Low-entry, Monocoque
Suspension	Air suspension (F2 / R4) With Wabco ECAS
Tire	275/R 22.5
Battery Capacity	600AH/576V (Lithium Battery)
Brake	Disc brakes (F & R), With Wabco ABS
Charge Way	Vehicle-mounted charge interface
Range	180km
Electrical Control	CAN-Bus

DANCER_BEV_

CityBus (8.4m)



Item	Configurations
Model	DANCER_BEV_CityBus
Dimension (mm)	8400x2500x3000 (3515)
Max. Gradeability	23%
Max. Speed	84km/h
Motor	DDM155B
F/R Axle	4.2T/9.0T
Structure	Low-entry, Monocoque
Suspension	Air suspension (F2 / R4)
Tire	275/R 22.5
Battery Capacity	400AH/563V (Lithium Battery)
Brake	Disc brakes (F & R)
Charge Way	Vehicle-mounted charge interface
Range	200km
Electrical Control	CAN-Bus





PEARL_BEV_Coach (8.35m)



Item	Configurations
Model	PEARL_BEV_Coach
Dimension (mm)	8350x2300x3050
Max. Gradeability	20%
Max. Speed	100km/h
Motor	KAM280EFB
F/R Axle	4.2T/8.0T
Structure	3-step
Suspension	Air suspension (F2 / R4)
Tire	245/R 19.5
Battery Capacity	320AH/345V (Lithium Battery)
Brake	Disc brakes (F & R)
Charge Way	Vehicle-mounted charge interface
Range	150km
Electrical Control	Fitted standard

JADE_BEV_MidBus (8m)



Item (BEV)	Configurations (Intercity)
Model	JADE_BEV_MidBus
Dimension (mm)	8045x2460x3360
Max. Gradeability	20%
Max. Speed	120km/h
Motor	Prestolite inverter motor
F/R Axle	4.2T/8.0T
Structure	Monocoque, Drive-in luggage compartment
Suspension	Air suspension (F2 / R4)
Tire	275/70R 22.5
Capacity	280AH/537V (Lithium Battery)
Brake	Disc brakes (F & R), ABS+ASR
Charge Way	Vehicle-mounted charge interface
Range	200 Km
Electrical Control	CAN-Bus

CRYSTAL_PHEV_CityBus (10.5M or 12M)



Plug-In Electricity

plus



Diesel

Item (PHEV)	Configurations	Configurations
Model	CRYSTAL_PHEV_CityBus (10.5m)	CRYSTAL_PHEV_CityBus (12m)
Dimension (mm)	10490x2500x3240	12000x2550x3240
Max. Gradeability	20%	23%
Max. Speed	80 km/h	80 km/h
Motor/Engine	PMSM/YC6J200-30	PMSM/YC6J220-30
F/R Axle	5.5T/11.0T	7.5T/13.0T
Structure	Straight	Semi low-floor (3-step)
Suspension (F/R)	Multi leaf spring (12/13)	Multi leaf spring (4/5)
Tire	10.00-20	11.00-20
Battery Capacity	Super Capacitor	Super Capacitor
Brake	Dual circuit pneumatic brake	Dual circuit pneumatic brake
Charge Way	Vehicle-mounted charge interface	Vehicle-mounted charge interface
Electrical Control	Fitted standard	Fitted standard
Fuel/Tank	Diesel/180	Diesel/180

Interior Design Concepts



Care about our Earth!

