



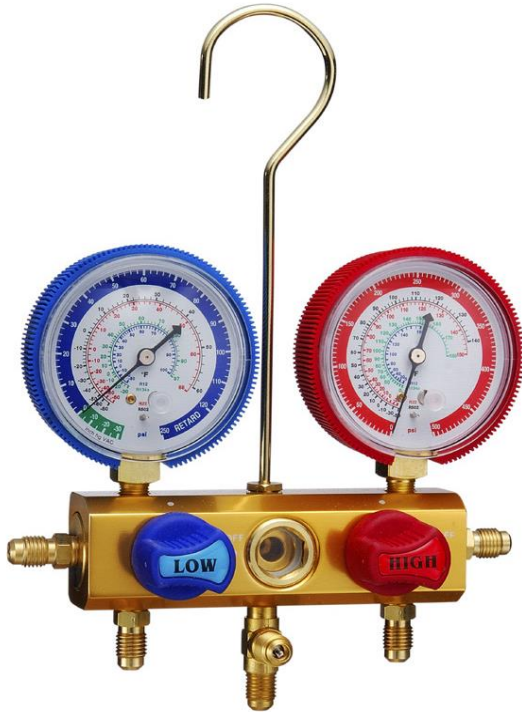
Gamela

Enterprise Co., Ltd.



Welcome to our site...

Refrigerant Manifold & Gauge



GAMELA ENTERPRISE CO., LTD.

5F., No.657-1, Zhongzheng Rd.,

Xinzhuang Dist., New Taipei City 242, Taiwan

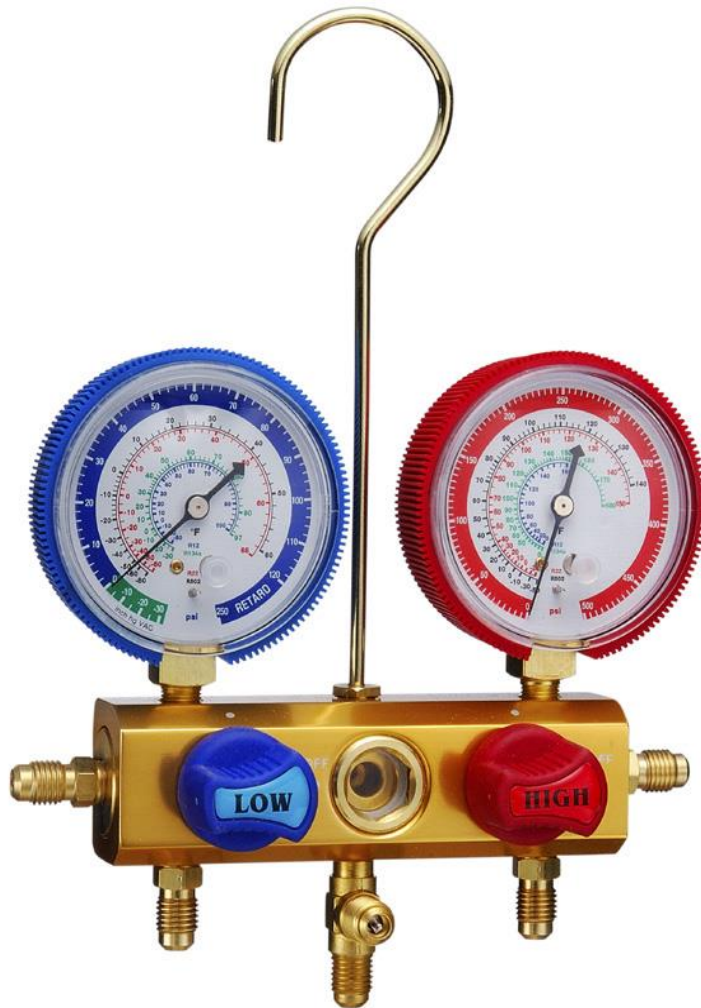
TEL: 886-2-29013211 FAX: 886-2-29042386

E-mail : gamela@gamela.com.tw

Website : www.gamela.com.tw

Copyright 2014 Gamela Enterprise Co., Ltd.

2-WAY BALL-VALVE MAINFOLD SET (50083A-E)



GAUGES Ø3-1/8" (80MM) WITH PROTECTIVE BOOTS	HOSE FITTING & LENGTH
REFRIGERANT	BALL-VALVE & 60"
R12, R22, R502, R134a	50083A
R22, R134a, R404A, R407C	50083B
R134a, R404A, R407C, R507	50083C
R22, R134a, R404A, R410A	50083D
R32, R410A	50083E

- Fitting - 1/4" SAE
- 3-piece hose set - red, yellow, blue
- Packaging - each set is packed in a blow-molded case

4-WAY BALL-VALVE MAINFOLD SET (50084A-E)



GAUGES Ø3-1/8" (80MM) WITH PROTECTIVE BOOTS	HOSE FITTING & LENGTH
REFRIGERANT	BALL-VALVE & 60"
R12, R22, R502, R134a	50084A
R22, R134a, R404A, R407C	50084B
R134a, R404A, R407C, R507	50084C
R22, R134a, R404A, R410A	50084D
R32, R410A	50084E

- Fitting - 1/4" SAE & 3/8" SAE
- 3-piece 1/4" SAE hose set - red, yellow, blue
- 1 piece 3/8" SAE vacuum hose
- Packaging - each set is packed in a blow-molded case

501022L-G



Flex Hose With Valve And Gauge for Refrigerant
and Nitrogen

Connection: 1/4SAE

Application : R134a / R1234yf / R404a/

R422D/R407C/R502 / R22/R410A/ N2+H2

R1234yf forging 2-way manifold set with manual quick couplers

50918SF



Forging manifold body with 3pcs* M12-1.5 female fitting, both side R1234yf quick coupler holder H&L, back side with 3pcs * 1/4" male fitting holder (45 degree), aluminum knob, 80mm gauge with R1234yf single refrigerant, bar/psi, degree C & F. 72 " RYB hose set 800/4000 psi, red and blue hose M12-1.5 male on both side, yellow hose M12-1.5 male x M12-1.5 left hand thread female. screw driver tool and valve core tool, hose repair kit (included 2pcs*o-ring, 1pc *depressor, 1pc * teflon seal), plastic box pack.

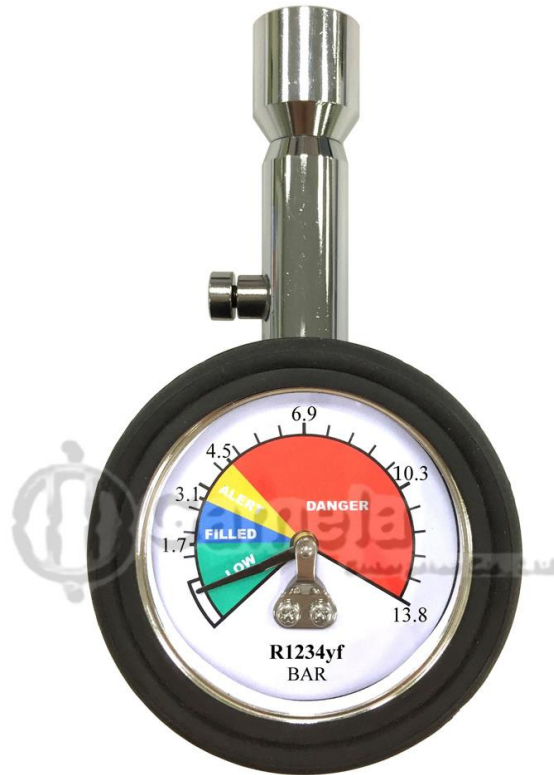
R1234yf Aluminum 2-way manifold set with manual quick couplers

50918SA



Aluminum manifold body with 3pcs* M12-1.5 female fitting, both side R1234yf quick coupler holder H&L, aluminum knob, 80mm gauge with R1234yf single refrigerant, bar/psi, degree C & F. 72" RYB hose set 800/4000 psi, red and blue hose M12-1.5 male on both side, yellow hose M12-1.5 male x M12-1.5 left hand thread female. screw driver tool and valve core tool, hose repair kit (included 2pcs*o-ring, 1pc *depressor, 1pc * teflon seal), plastic box pack.

58945



R1234yf check gauge, 0~13.8 bar or 0~200psi

Packing Detail:

Q'TY: 60 PCS
N.W: 17.10 KGS
G.W: 19.50 KGS
CUFT: 4.39
Slide card

Manifold Gauge Set



501001

Connection:1/4SAE
 Application:HFC-134a
 Features:High quality aluminum alloy valve body.
 Elegant reinforced plastic protective guard.
 Gentle and comfortable design hand wheel structure.
 Durable product quality.



501002

Connection:1/4SAE
 Application:HFC-134a
 Features:High quality aluminum alloy valve body.
 Special tough rubber protective guard.
 Gentle and comfortable design hand wheel structure.
 Durable product quality.



501003

Connectio:1/4SAE
 Application:HFC-134a
 Features:High quality aluminum alloy valve body.
 Gentle and comfortable design hand wheel structure.
 Prevalent streamline design pressure gauge.
 Durable product quality.



501004

Connectio:1/4SAE
 Application:HFC-134a
 Features:High quality aluminum alloy valve body.
 Gentle and comfortable design hand wheel structure.
 Prevalent streamline design pressure gauge.
 Durable product quality.
 Quick discharge needle valve.



501005
 Connectio:1/4SAE
 Application:HFC-134a、R-404a
 Features:High quality aluminum alloy valve body.
 Prevalent streamline design pressure gauge.
 Gentle and comfortable design hand wheel structure.
 Durable product quality.



501006
 Connectio:1/4SAE
 Application:R-12、22
 Features:High quality aluminum alloy valve body.
 Extra big hand wheel.
 Prevalent streamline design pressure gauge.
 Durable product quality.



501007
 Connectio:1/4SAE
 Application:R-12、22、502
 Features:High quality C3771BD copper valve body.
 Special tough rubber protective guard.
 Extra big plastic hand wheel.
 Reliable sintered glass window.
 Durable product quality.



501008
 Connectio:1/4SAE
 Application:R-12、22、502
 Features:High quality C3771BD copper valve body.
 Extra big zinc alloy hand wheel.
 Durable product quality.



501009
 Connectio:1/4SAE
 Application:R-12、22、502
 Features:High quality C3771BD copper valve body.
 Prevalent streamline design pressure gauge.
 Special iron hand wheel.
 Reliable sintered glass window.
 Durable product quality.



501010
 Connectio:1/4SAE
 Application:R-12、22、502
 Features:High quality C3771BD copper valve body.
 Special bend design.
 Extra big zinc alloy hand wheel.
 Vibration-proof oil-filled pressure gauge.
 Durable product quality.



501012
 Connectio:1/4SAE
 Application:HFC-134a、R-404a
 Features:High quality aluminum alloy valve body.
 Swiss-style appearance.
 Prevalent streamline design pressure gauge.
 Durable product quality.



501016
 Connectio:1/4SAE
 Application:R-12、22、502
 Features:High quality C3771BD copper valve body.
 Prevalent streamline design pressure gauge.
 Special iron hand wheel.
 Durable product quality.



501045

Connectio:3x1/4SAE 1x3/8SAE

Application:R22 · R134a · R404a · R407c · R410a

Features:High quality aluminum alloy valve body.

Gentle and comfortable design hand wheel structure.

Prevalent streamline design pressure gauge.

Durable product quality.



501046

Connectio:3x5/16SAE 1x3/8SAE

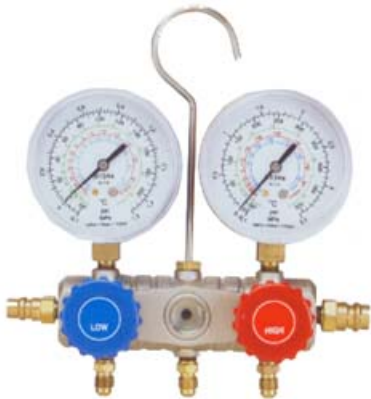
Application:R22 · R134a · R404a · R407c · R410a

Features:High quality aluminum alloy valve body.

Gentle and comfortable design hand wheel structure.

Prevalent streamline design pressure gauge.

Durable product quality.



501018

Connectio:1/4SAE or 5/16SAE

Application:R22 · R134a · R404a · R407c · R410a

Features:High quality aluminum alloy valve body.

Gentle and comfortable design hand wheel structure.

Prevalent streamline design pressure gauge.

Durable product quality.

Quick discharge needle valve



501019

Connectio:1/4SAE or 5/16SAE

Application:R22 · R134a · R404a · R407c · R410a

Features:High quality aluminum alloy valve body.

Extra big hand wheel.

Prevalent streamline design pressure gauge.

Durable product quality.



501043

Connectio:3x1/4SAE & 1x3/8SAE

Application:R22 · R134a · R404a · R407c

Features:High quality aluminum alloy valve body.

Gentle and comfortable design hand wheel structure.

Prevalent streamline design pressure gauge.

Durable product quality.



501044

Connectio:3x1/5 6SAE & 1x3/8SAE

Application:R410a

Features:High quality aluminum alloy valve body.

Gentle and comfortable design hand wheel structure.

Prevalent streamline design pressure gauge.

Durable product quality.

Quick discharge needle valve



501000

Connectio:1/4SAE

Application:R134a

Features:High quality aluminum alloy valve body.

Gentle and comfortable design hand wheel structure.

Prevalent streamline design pressure gauge.

Durable product quality.



5010001

Connectio:1/4SAE & 5/16SAE

Application:R410a

Features:High quality aluminum alloy valve body.

Gentle and comfortable design hand wheel structure.

Prevalent streamline design pressure gauge.

Durable product quality.



501015

Connectio:1/4SAE &5/16SAE

Application:R410a

Features:High quality aluminum alloy valve body.

Gentle and comfortable design hand wheel structure.

Prevalent streamline design pressure gauge.

Durable product quality.

Quick discharge needle valve.

Four-Way Manifold Gauge Set



501050

Connectio:5/16SAE

Application:R-410a

Features:High quality aluminum alloy valve body.

Independent control in evacuation and filling.

Gentle and comfortable design hand wheel structure.

Prevalent streamline design pressure gauge.

Durable product quality.



501017

Connectio:1/4SAE

Application:R12 · R22 · R134a · R404a

Features:High quality aluminum alloy valve body.

Gentle and comfortable design hand wheel structure.

Prevalent streamline design pressure gauge.

Durable product quality.

Quick discharge needle valve.



501051

Connectio:1/4SAE

Application:R-22 · 404a · 407c · HFC-134a

Features:High quality aluminum alloy valve body.

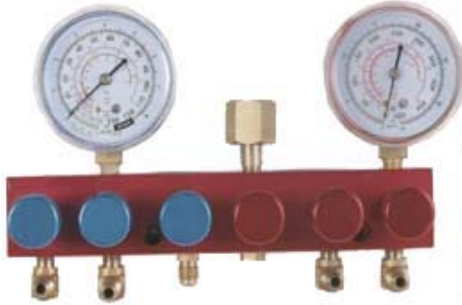
Independent control in evacuation and filling.

Gentle and comfortable design hand wheel structure.

Prevalent streamline design pressure gauge.

Durable product quality.

Freon Filling Manifold Gauge Set



501207

Connectio:1/4SAE

Application:R-12、22、502

Features:High quality aluminum alloy valve body.

Integrated multiway valves.

Vacuum gauge connection.

Vacuum gauge overpressure protection.

Durable product quality.

Manifold Gauge set with Vacuum Pump



50099

Manifold Gauge set with Vacuum Pump

Electronic Manifold Gauges Set



501020

Connection:1/4SAE,5/16SAE,1/2ACME

Application:R22、R134a、R410a

Features:--High quality aluminum valve body in three contours for choice.

--Large LCD display instead of traditional pointer and much better and clear.

--Convenient switchover in optional three types of refrigerand.

--Convenient selection of pressure unit in MPa,Psi. or kgf/cm² and optional switchover between °C or °F to meet different demand.

--Over-pressure and overload protection on the low pressure side.

--Gentle and comfortable hand wheel design.

--Constant and durable product quality.



501021

Connection:1/4SAE,5/16SAE,1/2ACME

Application:R22、R134a、R410a

Features:--High quality forged aluminum valve body in three contours for choice.

--Large LCD display instead of traditional pointer and much better and clear.

--Convenient switchover in optional three types of refrigerand.

--Convenient selection of pressure unit in MPa,Psi. bar or kgf/cm² and optional switchover between °C or °F to meet different demand.

--Over-pressure and overload protection on the low pressure side.

--Gentle and comfortable hand wheel design.

--Constant and durable product quality.



501023

Connection: 1/4SAE, 5/16SAE, 1/2ACME

Application: R22 · R134a · R410a

- Features:--High quality forged aluminum valve body in three contours for choice.
- Large LCD display instead of traditional pointer and much better and clear.
 - Convenient switchover in optional three types of refrigerant.
 - Convenient selection of pressure unit in MPa, Psi, bar or kgf/cm² and optional switchover between °C or °F to meet different demand.
 - Over-pressure and overload protection on the low pressure side.
 - Gentle and comfortable hand wheel design.
 - Constant and durable product quality.



501025

Digital 2-Way Manifold Gauge Set 501025

High / low side digital gauge

Low side: 0~500psi

High side: 0~800psi

2-Way piston manifold valve



501024

Connection can be 1/4"SAE · 5/16"SAE or 1/2"ACME

Can use for 36 kinds Refrigerant R12 · R13 · R14 · R22 · R23 · R114 · R123 · R134a · R290 · R401A · R401B · R402A · R402B · R404A · R406A · R407A · R407C · R408A · R409A · R410A · R414A · R416A · R417A · R420A · R421A · R422A · R422B · R422D · R424A · R427A · R434A · R437A · R502 · R503 · R507 · R718 etc.

Manifold Single Gauge Set



501107

Connectio:1/4SAE

Application:R22 ∙ R134a ∙ R404a

Features:High quality aluminum alloy valve body.

Gentle and comfortable design hand wheel structure.

Prevalent streamline design pressure gauge.

Durable product quality.



501108

Connectio:1/4SAE

Application:R22 ∙ R134a ∙ R404a

Features:High quality aluminum alloy valve body.

Gentle and comfortable design hand wheel structure.

Prevalent streamline design pressure gauge.

Durable product quality.



501103
 Connectio:1/4SAE
 Application:R12 R22 R134a R404a
 Features:High quality aluminum alloy valve body.
 Gentle and comfortable design hand wheel structure.
 Prevalent streamline design pressure gauge.
 Durable product quality.



501104
 Connectio:Dg4
 Application:R-12、22、502
 Features:High quality C3771BD copper valve body.
 Without pressure gauge.
 High strength nylon hand wheel.
 Durable product quality.



501101
 Connectio:1/4SAE
 Application:R12 R22 R502
 Features:High quality brass alloy valve body.
 Gentle and comfortable design hand wheel structure.
 Prevalent streamline design pressure gauge.
 Durable product quality.



501105
 Connectio:1/4SAE
 Application:R410a
 Features:High quality aluminum alloy valve body.
 Gentle and comfortable design hand wheel structure.
 Prevalent streamline design pressure gauge.
 Durable product quality.



501106

Connectio:1/4SAE

Application:R410a

Features:High quality aluminum alloy valve body.

Gentle and comfortable design hand wheel structure.

Prevalent streamline design pressure gauge.

Durable product quality.



501103

Connectio:Dg4

Application:R-12 · 22 · 502

Features:High quality C3771BD copper valve body.

Special tough rubber protective guard.

High strength nylon hand wheel.

Durable product quality.



501104

Connectio:1/4SAE

Application:R12 R22 R134a R404a

Features:High quality aluminum alloy valve body.

Gentle and comfortable design hand wheel structure.

Prevalent streamline design pressure gauge.

Durable product quality.



501101

Connectio:1/4SAE

Application:R-12 · 22 · 502

Features:High quality C3771BD copper valve body.

Special tough rubber protective guard.

Extra big zinc alloy hand wheel.

Durable product quality.



501102

Connectio:1/4SAE

Application:R12 R22 R502

Features:High quality brass alloy valve body.

- Gentle and comfortable design hand wheel structure.
- Prevalent streamline design pressure gauge.
- Durable product quality.



501109

Connectio:M12x1.25

Application:R12 R22 R502

Features:High quality brass alloy valve body.

- Gentle and comfortable design hand wheel structure.
- Prevalent streamline design pressure gauge.
- Durable product quality.



501110

Connectio:M12x1.25

Application:R12 R22 R502

Features:High quality brass alloy valve body.

- Gentle and comfortable design hand wheel structure.
- Prevalent streamline design pressure gauge.
- Durable product quality.

Flex Hose With Valve And Gauge



501022

Connectio:1/4SAE

Application:N₂

Features:Pressure indication of leakage testing in different refrigerant system.
Pressure indication in nitrogen charging cleaning and protection of welded piping.
Small ball valve for easy control.
Various types of connection meet different customer demand.

Gauge Set



50106

2 WAY Aluminum Sight Glass Manifold Gauge Set With 63mm (2 1/2") Anti-Flutter Gauge,
Piston Type Valve 1/2" ACME Fitting & Quick Coupler Holder & T Adapter W/core

1-Way Manifold Without Gauge



501111

Connectio:1/4SAE

Features:High quality aluminum alloy valve body.
Without pressure gauge.
High strength nylon hand wheel
Durable product quality.



501112

Connectio:1/4SAE

Features:High quality aluminum alloy valve body.
Without pressure gauge.
High strength nylon hand wheel
Durable product quality.



501113

Connectio:1/4SAE

Features:High quality aluminum alloy valve body.
Without pressure gauge.
High strength nylon hand wheel
Durable product quality.



501114

Connectio:1/4SAE



501115

Connectio:Dg4

Various Tools



501402

Connectio:1/4SAE
Application:R134a
Features:High quality C3771BD copper.
Durable product quality.



501404

Connectio:1/4SAE
Application:R12
Features:High quality C3771BD copper.
High grade dull nickel plating.
Durable product quality.



501405

Connectio:1/4SAE
Application:R134a
Features:High quality C3771BD copper.
High grade dull nickel plating.
Durable product quality.



501406

Connectio:1/4SAE
Application:R134a R22 R410a
Features:High quality C3771BD copper.
High grade dull nickel plating.
Durable product quality.



501401

Connectio:1/4SAE
Application:R12
Features:High quality C3771BD copper.
Durable product quality.



501403

Connectio:1/4SAE
Application:R12 R22 R134a R404a R410a R407c
Features:High quality C3771BD copper.
High grade dull nickel plating.
Durable product quality.

Freon Filling Hose



501410

Connectio:1/2ACME
Application:R134a
Length:12"(0.3m)
Features:Connect bottle opener and low pressure
quick connect fittings.
Suitable for temporary quick filling.

Pressure Gauges For Manifold



501522

Connectio:1/8NPT

Application:R-12、22、502

Features:Imported high precision gauge internal.

Damping oil cup.

Special overpressure limiting device.

Micro-adjustable zero.



501538

Connectio:1/8NPT

Application:R410a

Features:Imported high precision gauge internal.

Damping oil cup.

Special overpressure limiting device.

Micro-adjustable zero.



501503

Connectio:1/8NPT

Application:HFC-134a

Features:Imported high precision gauge internal.

Damping oil cup.

Special overpressure limiting device.

Micro-adjustable zero.



501517

Connectio:1/8NPT

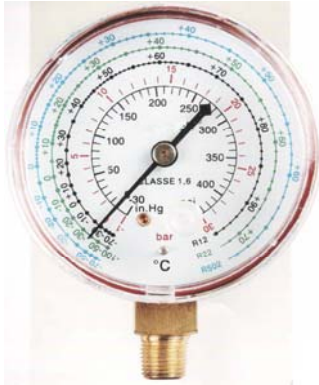
Application:HFC-134a.R404a and R507c

Features:Imported high precision gauge internal.

Damping oil cup.

Special overpressure limiting device.

Micro-adjustable zero.



501525

Connectio:1/8NPT

Application:R-12、22、502

Features:Imported high precision gauge internal.

Damping oil cup.

Special overpressure limiting device.

Micro-adjustable zero.



501509

Connectio:1/8NPT

Application:R12、22、502

Features:Imported high precision gauge internal.

Damping oil cup.

Special overpressure limiting device.

Micro-adjustable zero.



501527

Connectio:1/8NPT

Application:R410a

Features:Imported high precision gauge internal.

Damping oil cup.

Special overpressure limiting device.

Micro-adjustable zero.



501518

Connectio:1/8NPT

Application:R22、HFC-134a、R404a、R507c

Features:Imported high precision gauge internal.

Damping oil cup.

Special overpressure limiting device.

Micro-adjustable zero.



501536

Connectio:1/4SAE

Application:R22、HFC-134a

Features:Imported high precision gauge internal.

Damping oil cup.

Special overpressure limiting device.

Micro-adjustable zero.



501537

Connectio:1/4SAE

Application:R22、HFC-134a、R404a、R507c

Features:Imported high precision gauge internal.

Damping oil cup.

Special overpressure limiting device.

Micro-adjustable zero.



501533

Connectio:1/4SAE

Application:R22、HFC-134a、R404a、R507c

Features:Imported high precision gauge internal.

Damping oil cup.

Special overpressure limiting device.

Stainless steel case.



501535

Connectio:1/8NPT

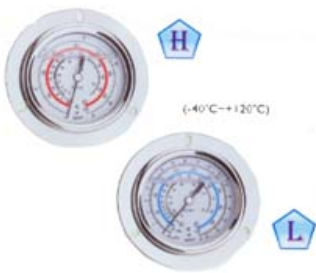
Application:R-12、22、502

Features:Imported high precision gauge internal.

Damping oil cup.

Special overpressure limiting device.

Stainless steel case.



501540

Connectio:1/4SAE

Application:R410a

Features:Imported high precision gauge internal.

Damping oil cup.

Special overpressure limiting device.

Stainless steel case.

501534

Connectio:1/4SAE

Application:R410a R22 R404a R407c

Features:Imported high precision gauge internal.

Damping oil cup.

Special overpressure limiting device.

Stainless steel case.



50712

Manifold Gauge

Vacuum Gauge W/Release Valve

80mm w/Indicator, Metal Housing

50713

Manifold Gauge

Vacuum Gauge W/Release Valve

80mm W/O Indicator, Metal Housing



50714

Pressure Gauge for R1234YF use W/Oil 50714

Manifold Gauge

Low Pressure

80mm Metal Housing